

It's called Advantage for a reason. A few, actually.



Advantage WiFi

Advantage WiFi is an enterprise-grade network solution providing business outcomes for any size of business.

Enjoy the benefits of professionally installed, secure and dependable WiFi over a wide area with **Advantage WiFi™**, a businessgrade, cloud managed solution powered by Rogers Business. With separate networks for visitors and staff, your sensitive data is protected and secure. What's more, you'll be able to view real-time usage and data insights to make informed business decisions. Above all, your WiFi is easy-to-use and worry-free, allowing you to focus on what really matters.

Major Advantages



Two separate networks, one amazing speed

- › Advantage WiFi helps protect your sensitive data by providing one network for your business, with a fully separate network for your guests.
- › Keep your speed. Having multiple networks doesn't affect your network capabilities.



You won't believe your insights

- › Advantage WiFi's analytics can help you serve your customers better by understanding when and how long they're on your network.
- › Wondering why it matters? Knowing these patterns can help you develop custom business strategies for your market.



WiFi far and wide (and even wider)

- › Advantage WiFi gives you coverage in every square foot of your business.
- › Support more end devices without compromising on signal performance.



The cloud nine of cloud management

- › Automatic monitoring ensures your network stays at top performance, all from behind the scenes.
- › Receive seamless over-the-web feature upgrades and updates.

Advantage for your business

Build the bundle that works for you

Bundle Advantage WiFi to create a solution that provides the flexibility and peace of mind your business requires.



Advantage Security™

Automatically helps stop viruses, hackers, and malware.



LTE Backup

If your primary connection goes down, a wireless connection automatically takes over.



Advantage Mobility

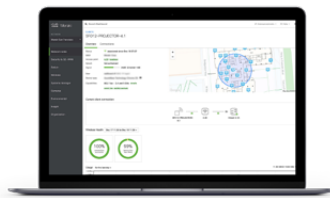
Increase savings with every wireless line added to your bundle.

Your Advantage WiFi network by the numbers



Location Analytics

Location analytics provide insights into your WiFi network traffic patterns, so you can make informed decisions to increase sales and boost repeat business.



Login Settings

Manage and customize login settings to ensure your WiFi network provides a consistent experience. Add a custom splash page at login with your logo and company branding.



Website Usage

Monitor application and website usage so you can track traffic and make smart marketing decisions.

Give your network the advantage

Contact me today to find out more.

Name:

Email Address:

Phone Number:

rogers.com/advantagewifi