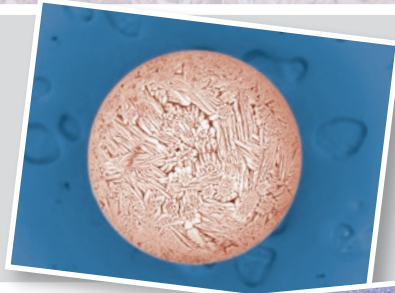


# Previous NuMart Winners

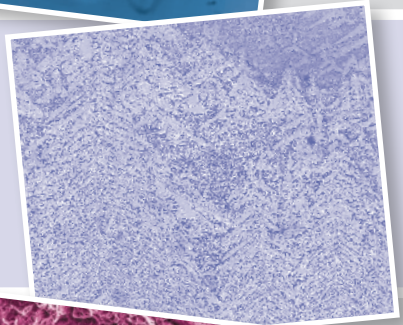
**Submitted by  
Kim Jae-Hwan**

*Beryllide pebble synthesized by  
rotating electrode method*



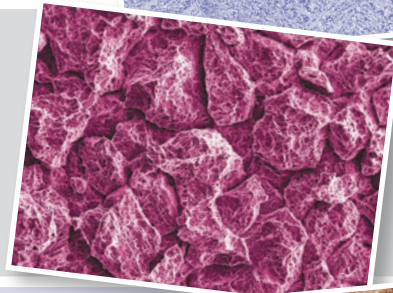
**Submitted by  
Valentina Casalegno**

*Christmas Tree-like glass-ceramic as  
joining material for nuclear environment*



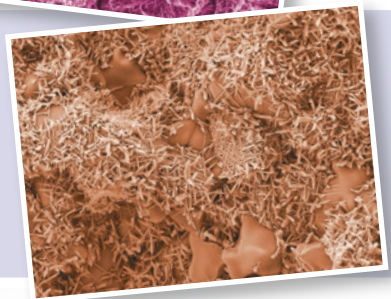
**Submitted by  
Sublime Ningshen**

*SEM morphology showing the  
"end grain" attack in 11%Cr Ferritic –  
Martensitic steel after 240 h exposure  
in boiling 70% HNO<sub>3</sub>*



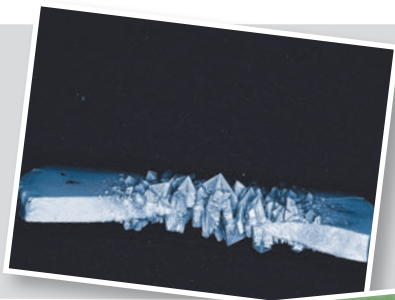
**Submitted by  
Teresa Palacios García**

*Needle oxides grown in the tungsten grains  
in a W-1Y2O3 alloy when it is tested a high  
temperature in air*



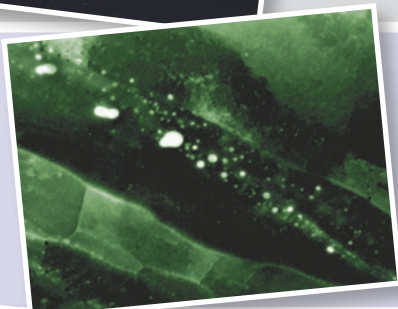
**Submitted by**  
**Thierry Wiss**

*Scanning electron image of a  
high power laser impact on UO<sub>2</sub>*



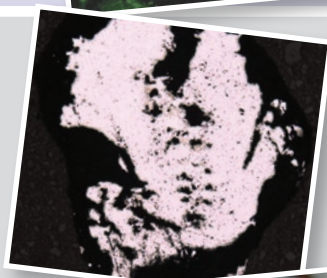
**Submitted by**  
**Kiyohiro Yabuuchi**

*The Milky Way: HAADF (high angle  
annular dark field) STEM image of ODS  
nanoparticles*



**Submitted by**  
**Stanislav Melchakov**

*A microscope image of intermetallic  
phases formed in a Nd-Ga-In alloy*



**Submitted by**  
**Stanislav Melchakov**

*Liquid Ga-In-La alloy on a filter during the  
experiments on determining lanthanum  
solubility in low melting metals*

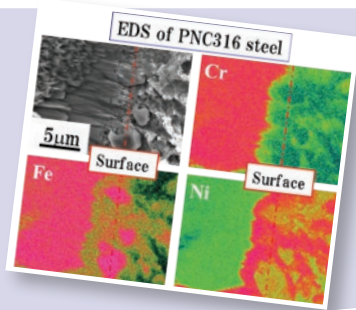


**Submitted by**  
**Stanislav Melchakov**

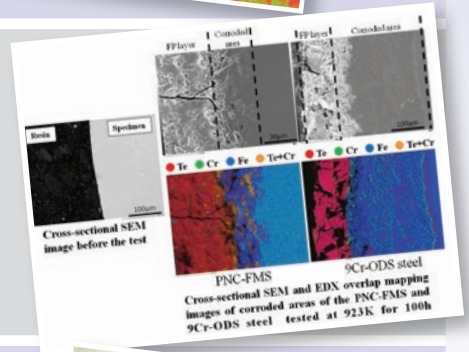
*Crystals of salt sublimed from a cell  
during pyrochemical electrorefining tests*



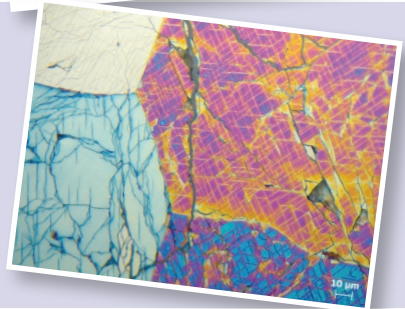
Submitted by  
**Motoki Matsuyama**  
*EDS of PNC316 Steel*



Submitted by  
**Tanigaki Takanori**  
*Oxygen potential effect for Cs-Te corrosion behavior of FBR cladding materials*



Submitted by  
**Olivier Dugne, Thierry Alpettaz, Stephane Gosse and Christine Gueneau**  
*Optical micrography of UC after chemical etching; visualization of the microstructure: grain size, UC2 precipitates, cracks*



Submitted by  
**Olivier Dugne, Thierry Alpettaz, Stephane Gosse and Christine Gueneau**  
*Optical micrography of UC2 after chemical etching; visualization of the microstructure: grain size, twin domain*

