

The **Data Monitor** development roadmap – what’s in the pipeline for 2023?

Data Monitor gives your institution visibility of your entire research data output by drawing on **millions of** research data records from more than **2,000** general, domain-specific and institutional repositories.

Once the data records have been harvested, Data Monitor cleans their metadata and enriches them with publication, author and institutional links. Your institution can choose from a range of convenient data delivery options, including integration with your research information management system (RIMS)/current research information system (CRIS) or institutional repository (IR).

Curious to see how Data Monitor can help your institution?

- Find out how [University of Groningen in the Netherlands](#) leveraged Data Monitor to grow the data records in its Pure site by more than 400 percent. The tool has also helped the university comply with institutional policies, gain new research insights, reduce the administrative burden and improve data visibility.
- Discover the key role Data Monitor plays in an integrated, end-to-end research data management process designed by [University of Canberra in Australia](#) to help researchers comply with national policy requirements.

Data Monitor



But with interest in open science and research data management and sharing continuing to grow, it's essential to keep one eye fixed firmly on the future. For our Data Monitor product development team, that means continuing to work with the community

to deliver features and functionalities that improve the tool's rich data discovery and enhancement capabilities.

In this document, we run through the key Data Monitor improvements planned for 2023.

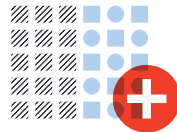
The Data Monitor 2023 roadmap

Our Data Monitor product developments are designed to address four core areas:

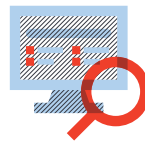
Data coverage & quality



Data enrichment



The Data Monitor web app



The Data Monitor API



For ease of reference, we have used these focus areas to categorize the information on this page.



Data coverage & quality

2023 pipeline developments include:

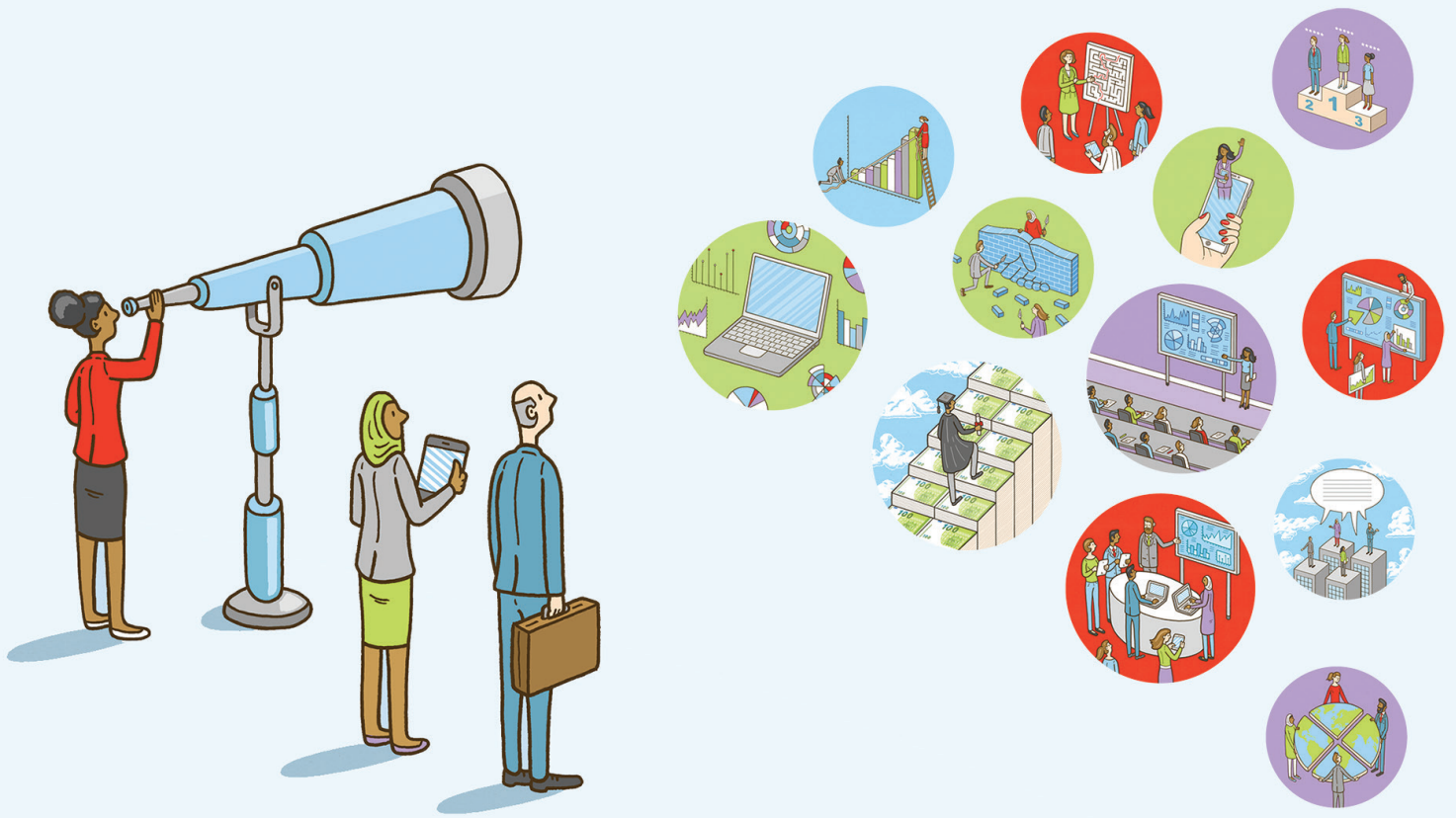
- **Increasing data coverage in the life sciences;** for example, indexing more [repositories supported by the National Institutes of Health](#).
- **Improving our data classifications to deliver more precise results.** Plans include:
 - Multiple initiatives to remove articles and irrelevant content
 - The removal of duplicates and management of versions
 - Optimization of supplementary file classification



Data enrichment

A key focus for the product development team this year is to improve the coverage of the metadata fields required for easy ingestion into institutional RIMSs/CRISs and IRs, which will also improve the accuracy of reporting. Steps will include:

- Increasing the number of links to **author profiles**. This will improve visibility of data sharing by authors, as well as matching in Pure and other RIMSs/CRISs and IRs.
- Expanding the number of links to **publications** to provide a more complete view of data sharing practices by authors.
- Increasing the number of **affiliation links** to boost the volume of research data records per institution.



The Data Monitor web app

This area of development aims to optimize the web app's ability to support librarians and administrators in their research data analysis activities. Work in 2023 will focus on delivering more granular insights by:

- Providing **organizational breakdowns** for sub-organization views and curation capabilities.
- Adding **metrics** and other **key metadata** on the record page.



The Data Monitor API

Data Monitor offers an open API that can be used to programmatically access content or integrate with Elsevier solutions such as Pure and Digital Commons Data, as well as third-party RIMs/CRISs and IRs. In 2023, this area of development will focus on simplifying the integration process with other solutions, along with the user experience for administrators managing the integration flow. For example, we will:

- Enable **OAI-PMH integration** to make it easier for the RIMs/CRISs or IR systems that natively implement this protocol to integrate with Data Monitor, e.g., **Dataverse**.
- Improve the existing **Pure-Data Monitor** import experience by simplifying the user interface.

Data Monitor

Data Monitor puts institutions in the driving seat of their Research Data Management journey by providing visibility on their institution's entire research data output



For more information scan the QR code or visit

elsevier.com/solutions/data-monitor

Elsevier offices

ASIA AND AUSTRALIA
TEL: + 65 6349 0222

JAPAN
TEL: + 81 3 5561 5034

KOREA AND TAIWAN
TEL: +82 2 6714 3000

EUROPE, MIDDLE EAST AND AFRICA
TEL: +31 20 485 3767

NORTH AMERICA, CENTRAL AMERICA AND CANADA
TEL: +1 888 615 4500

SOUTH AMERICA
TEL: +55 21 3970 9300



Data Monitor

Data Monitor is a service mark of Elsevier Inc.
Copyright © February 2023 Elsevier B.V.