

CUSTOMIZABLE VERSIONS, ACCESSORIES & OPTIONS

The dispensers can be fitted with different equipment options according to individual requirements.

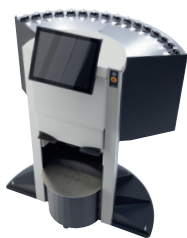
Adjustable holders for monitor and keyboard or even a touch display are available. For sample pot containers is the optional manual "small container tray" ideal. Label printers can be placed on a dedicated holder.

Other options

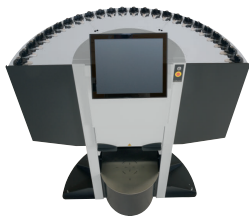
- Mechanical punch
- Laser indicator
- PC and monitor options
- Customizable magnetic advertising surface

Truly modular

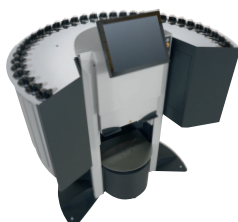
The machine is modular in design. Versions with 16, 24 and 32 canisters are available. Of course, you can use less canisters for each version or do a possible double occupancy for increasing tinting speed or reduce refilling efforts. The capacity of each canister is 2.5 or 5.0 liters. You can switch between the required canister sizes without limitation.



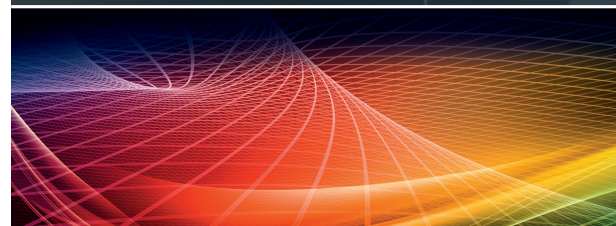
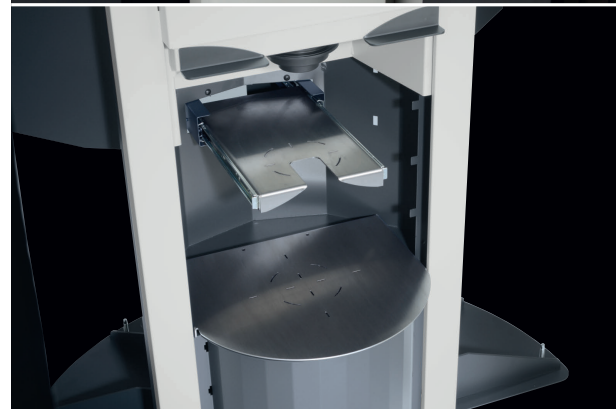
VERSION WITH
16 CANISTERS

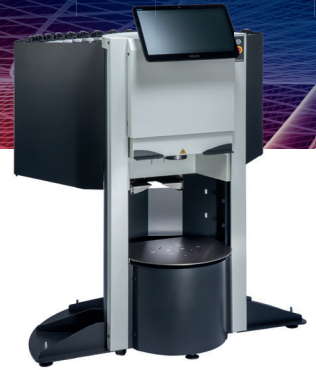


VERSION WITH
24 CANISTERS



VERSION WITH
32 CANISTERS





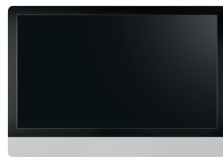

Accessories and Options

ARTICLE PICTURE	APPLICATION PICTURE	ARTICLE	DESCRIPTION	ART. NO.
		tint ONE 2.5 litre canister - AQUA	tint ONE paste canister for water-soluble pastes Volume: 2.5 litres Limited suitability for solvent-containing pastes. Supply of a fully assembled unit: <ul style="list-style-type: none"> ● Colorant container ● Piston pump ● vPCB ● Multi-functional valve ● Cover including colourant designation 	75.000
		tint ONE 2.5 litre canister AQUA vibro	tint ONE paste canister for water-soluble and thixotropic colourants Same as Art. No. 75000, however incl. vibroPAD	75.017
		tint ONE 2.5 litre canister dummy	tint ONE colourant canister as a non-functioning place holder Volume: 2.5 litres	75.019
		tint ONE 2.5 litre canister refurbished	tint ONE colourant canister as a refurbished unit Equipment identical to Art. No. 75000 vibroPAD available for a surcharge Only available as a spare part	75.046
		Laser indicator	Visual assistance for the central positioning of small paint containers and test containers with laser technology	75.001
		Small paint container Extract	Positioning of small paint containers and sample pots directly under the nozzle head Can be retracted and extended as required	75.021
		Holding device for external PC	Fastening to the base of the machine	75.037

| Accessories and Options

ARTICLE PICTURE	APPLICATION PICTURE	ARTICLE	DESCRIPTION	ART. NO.
		Printer or mouse shelf	<ul style="list-style-type: none"> ● Single-sided ● Can be fitted on the left or right 	65.309
		Shelf surface for printer peripherals	<ul style="list-style-type: none"> ● Attached to the front on the left or right ● Includes magnetic fixing ● e.g. for label printer 	75.054
		Monitor holder	<p>Monitor holder</p> <ul style="list-style-type: none"> ● Can be swivelled for easy filling ● Angle of inclination can be adjusted ● Includes VESA bracket ● Pre-installation of monitor cable for a surcharge 	75.055
		"Touch" monitor bracket	<p>Monitor bracket for touch screens</p> <ul style="list-style-type: none"> ● Permanently attached to TINTA front ● Can be swivelled for easy filling ● Especially suitable for touch screen monitors ● Without additional keyboard 	75.056
		Filling terminal	<p>Filling tool for easy attachment of the disposable funnel</p> <ul style="list-style-type: none"> ● Can be secured using a magnet on the TINTA stainless steel cover ● Fast and secure docking to the canister opening <p><i>Included with delivery</i></p>	75.022
		Funnel holder	<p>Magazine for storage of the disposable funnel.</p> <ul style="list-style-type: none"> ● Can be secured using a magnet on TINTA ● Capacity sufficient for 50 disposable funnels <p><i>Included with delivery</i></p>	75.023
		Disposable funnel	<p>Filling funnel for clean canister filling</p> <ul style="list-style-type: none"> ● Batch size 50 pcs. <p><i>Included with delivery</i></p>	75.032

| Accessories and Options

ARTICLE PICTURE	APPLICATION PICTURE	ARTICLE	DESCRIPTION	ART. NO.
		Front advertising surface for TINTA 16 & TINTA 24	Two side panels and base cover at the front <ul style="list-style-type: none"> ● Magnetic foils ● printed in accordance with customer wishes ● Print files provided by the customer 	65.232
		Advertising surface at the front for TINTA 32	Scope as per Art. No. 65232	65.233
		Advertising surface Back TINTA 16	Container panelling on the rear <ul style="list-style-type: none"> ● Black ● Contains support Art. No. 65129 ● On request and for a surcharge: printing according to customer's wishes. Print files provided by the customer 	65.137
		Advertising surface Back TINTA 24	Scope as per Art. No. 65137	65.138
		Advertising surface Back TINTA 32	Scope as per Art. No. 65137	65.137
		Monitor	Collomix Standard, depending on current availability	65.252
		Keyboard	Collomix Standard, depending on current availability	65.253
		Industrial PC	Collomix Standard, depending on current availability	65.254

| Accessories and Options

ARTICLE PICTURE	APPLICATION PICTURE	ARTICLE	DESCRIPTION	ART. NO.
		All-in-one touch screen	Collomix Standard, depending on current availability	65.255
		Monitor mains cable 3m	Refrigerator plug - extra-long ● Only available on request	65.239
		VGA monitor cable 3 m	VGA monitor cable - extra-long ● Only available on request	65.235
		DC extension for printer	Extension of power cable ● Only available on request	65.241
		Assembly and routing Peripheral cables	Flat sum for cable laying ex works ● Cable specifications required from the customer	65.259