

Elo Touch Solutions Multi-Touch Driver Package User Manual

Elo Touch Solutions, Inc.
670 N McCarthy Blvd
Milpitas, CA 95035

Package Version: 6.9.15
Release Date: February 26, 2018

Supported OS:

Windows XP/ POSReady 2009
Windows 7/ POSReady 7
Windows 8 / 8.1
Windows Server 2012 / 2012 R2/ 2016
Windows 10

Supported Touch Technologies:

iTouch (SAW)
iTouch Plus (SAW)
pCap
Optical
IntelliTouch (SAW)
IntelliTouch Plus (SAW)
AccuTouch
IR (CarrollTouch/Multi-touch)
PulseTouch

Supported Touch Controllers:

iTouch Plus (dual touch): 2515-00/01/06/07
IntelliTouch Plus (dual touch): 2510, 2515-7, 2520, 2521, 32000
AccuTouch (single touch): 2210, 2216, 2218
IntelliTouch (single touch): 2310, 2500, 2700, 2701
Carroll Touch IR (single touch): 4000, 4500
Surface Capacitive (single touch): 5000, 5010, 5020
Projected Capacitive (up to 10 touches).

Supported Languages:

Chinese Simplified
Chinese Traditional
English
French
German
Italian
Japanese
Portuguese
Spanish

1. Installation and removal instructions

The user must be logged into an Administrator account to run the Elo Setup installer.

1.1 Installation

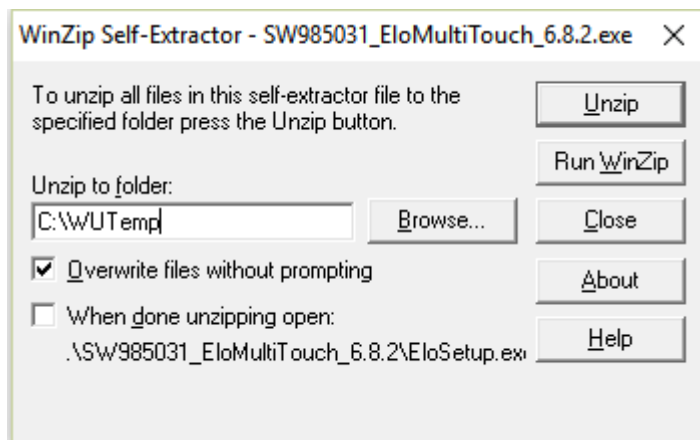
- Double click on EloSetup.exe
- Accept the installation agreement and proceed with the installation process.
- Once installation is complete, both USB and PulseTouch drivers will be installed regardless if the devices are connected or not; but the serial driver will be installed only if the touch screen with serial (RS232) interface is connected at the time of installation.
- Before running EloSetup.exe, user can set certain touch properties using EloOptions.ini located in the setup packages' "Common" folder. Open EloOptions.ini, under section [Setup Options], edit entries below:
 - a. ForceMouse
 - b. MaxTouch
 - c. MouseMode
 - d. BeepOptions
 - e. BeepDuration
 - f. BeepFrequency
 - g. IrUTR
 - h. IrAutoCalibration
 - i. CustomMapping_1PCap1IR
 - j. HardwareHandshaking

Below are summary of some common entries (please refer to the EloOptions.ini for the complete detailed descriptions of all entries)

ForceMouse (0|1): install Elo touch screen as mouse/pointer device

On Windows 7 or newer, user can choose to install Elo's touch screen as a mouse/pointer device by changing "ForceMouse" to 1. This change must be done before installation. There are a few ways to make changes to a setup package:

- Unzip the setup package using a zip/unzip tool (for example 7-zip) and then change the EloOptions.ini.
- If the setup package is a self-extracted executable, double-click the setup program and then un-check the checkbox "When done unzipping open ..." You can also choose a different location for storing unzip files. Below is a demonstration screen shot. Once unzip completes, the user can make changes to EloOptions.ini.



On Windows XP (or POSReady 2009), Elo multi-touch package will be installed in mouse mode to force the touch device to behave like a mouse pointer device regardless the value of ForceMouse.

MaxTouch:

Enforces max number of touches (in digitizer mode) that the touch device supports.

MouseMode:

Configure touch behavior, i.e. click on touch, click on release or mouse emulation.

BeepOptions:

Configure beep-on-touch to come from external speaker, motherboard beeper and/or IR monitor beeper.

BeepDuration:

Duration of beep tone in milliseconds.

BeepFrequency:

Frequency of beep tone to influence pitch.

IrAutoCalibration (0|1)

User can simplify the IR calibration process by setting the **IRAutoCalibration** to 1 under section **[Setup Options]** in EloOptions.ini. For this to work, correct calibration values must be existing in the EloOptions.ini. At the end of setup, user will be prompted with one-touch calibration to identify each IR monitor(s) and load the corresponding calibration parameters (based on the size and interface type of the IR monitor).

The existing IR calibration values in EloOptions.ini in the installation package are place holders and are for reference only; user needs to set the correct calibration values in the EloOptions.ini first before enabling **IRAutoCalibration** (set it to 1) and running EloSetup.

Mouse mode and beep settings under [Setup Options] section in EloOptions.ini will be applied to new touch devices.

For detailed information about these ini entries, please refer to EloOptions.ini, there are detailed descriptions for each section and its entries.

Once installation is complete, both USB and PulseTouch drivers will be installed regardless if the devices are connected or not; but the serial driver will be installed only if the touch screen with serial (RS232) interface is connected at the time of installation.

CustomMapping_1PCap1IR (0|1)

This is a custom flag for specific type of pCap (pCap with specific system BIOS product name) and IR (pre-calibration data is available in EloOptions.ini) only. When this flag is on for system with a pCap and an IR, touch on the pCap will be mapped to the primary display and the touch on the IR will be mapped to the non-primary display. The default value is 1.

IRBeamMonitoring (0|1)

Enable (1) or disable (0) IR beam status monitoring. This works only if the touch monitor has been calibrated. To invoke the beam monitoring at end of installation, the auto calibration feature must be turned on by setting both **IrAutoCalibration** and **CustomMapping_1PCap1IR** to 1.

When beam monitoring is enabled, EloConfig will scan the IR beam status with scan frequency specified by the user (default is 20 seconds). When any failed beams have been detected, a horizontal and/or vertical shaded bar will be drawn on the display to indicate the locations of failed beams. A message box will pop up to alert the user of the condition. The user can click the "Close" button of the message box to dismiss the visual alerts. All visual alerts will be cleared once the user has clicked the Close button on the alert box or no beam failure has been corrected (for example, an obstruction on the surface of the monitor has been removed), there will be no further visual alerts unless different beam failure has been detected.

If logging has been enabled for IR beam monitoring, a Windows Event will be logged and user can view the event using Windows Event Viewer under Event Source "EloConfig". An event will report beam information including total beams, failed beams and position of failed beams in the form of beam indexes from 0 to max beam count on each axis.

IRBeamStatusScanInterval (10 - 120)

Time interval (in seconds) between beam status scanning. Valid range is from 10 to 120 seconds. Default value is 20 seconds.

HardwareHandshaking (0|1)

If a serial RS-232 touch device requires hardware handshaking, this flag should be turned on (set the value to 1). The default value is 0.

1.1.1 PulseTouch Calibration File: using alternative storage location

The PulseTouch driver is installed by default together with the USB driver. The default PulseTouch calibration file is stored under C:\Program Files\Elo Touch Solutions\APRData. If the user needs to store the file in different location, please follow steps below:

- Make sure there is no current Elo installation.
- Run RegEdit.exe and create a new sub-key **EloMtApr**:
HKLM\System\CurrentControlSet\Services\EloMtApr\
 - Under sub-key **EloMtApr**, add a new string entry (type REG_SZ) named "**AprDataPath**" and set its value to desired location for storing the calibration file; for example, **E:\EloMtAprCalFile** where **EloMtAprCalFile** is a folder under partition E:\.
- Run the EloSetup. Once the installation is complete, the PulseTouch's calibration file will be stored under location specified in steps above.

1.2 Uninstallation

- Launch the Control Panel and choose Add and Remove Programs (Programs and Features in Windows 7 or newer).
- Select to remove “Elo Touch Solutions 6.8.0.x”.

1.3 Silent Installation

- Open the command line shell as an administrator and go to the root of the installation package (where EloSetup.exe is located).
- Type: “EloSetup.exe /s”

1.4 Silent Uninstallation

- Open the command line shell as an Administrator and go to the root of the installation path (i.e., C:\Program Files\Elo Touch Solutions\...).
- Input “EloX.exe /s /u”
- Exit the command line window.

1.5 Silent Installation – Log file

To create a log during installation, use the following command line option: EloSetup /log

The log file name is in the format of **EloSetup_yyyy_mm_dd.log** and is located under “C:\ProgramData\Elo Touch Solutions\” on Windows 7 or newer systems. The user will need to enable hidden files and folders to view the log. On Windows XP, the log file is located “C:\Documents and Settings\All Users\Application Data\”.

2. Setup options

2.1 To show setup option, type “EloSetup /?” in command line.

2.2 Setup for Single-touch:

If single-touch is preferred, follow the steps below:

- Locate the Elo driver installation package.
- Locate and open the “Common” folder in the package.
- Locate and open the EloOptions.ini file.
- Change the “MaxTouch” value from 0 to 1, and save the file.
- Run EloSetup.exe

Note: All multi-touch functions will be disabled in this scenario. This change in EloOptions.ini must be done before installing the Elo driver package.

2.3 Setup for Maximum Touch:

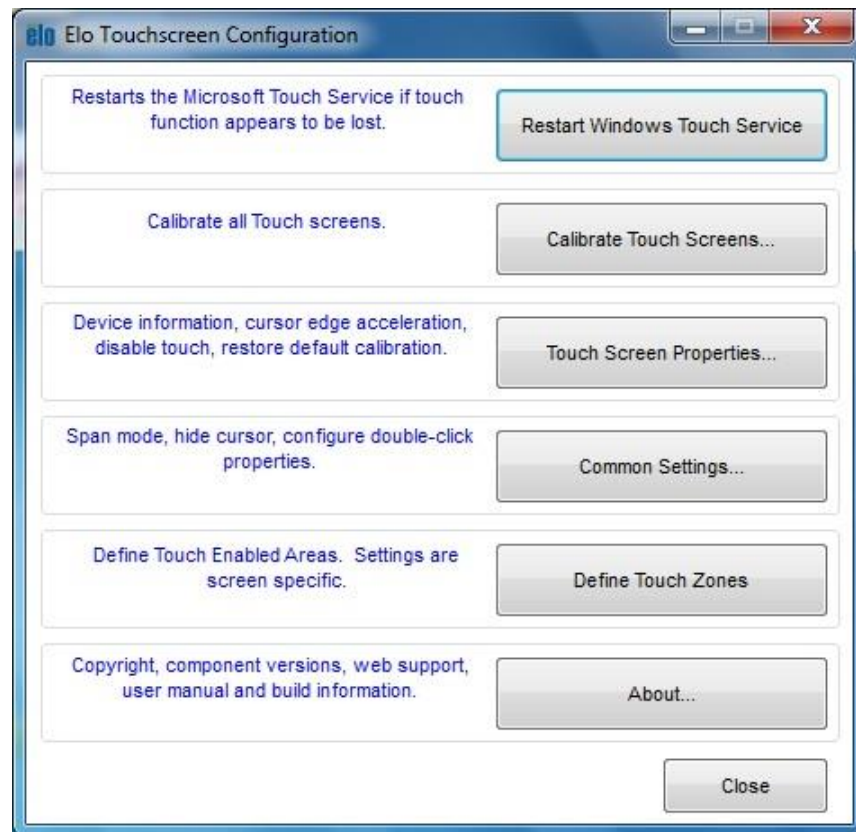
To set the number of touches, follow the steps below:

- Locate the Elo driver installation package.
- Locate and open the “Common” folder in the package.

- Locate and open the EloOptions.ini file.
- Change the “MaxTouch” value from 1 to 10 under **[Device Default]** section, and save the file.
- Run EloSetup.exe

3. Configuration Program: EloConfig.exe

This is the configuration tool for the Elo Multi-Touch drivers. The setup program will launch the tool at the end of the installation. This program will be running in the background and will launch when the user starts it from the Window’s Control Panel, or manually execute it from the desktop icon.



The following is a description of each of the buttons located in the Elo Touch Screen Configuration application:

3.1 Restart Windows Touch Service

Select this option to restart Windows Touch Service in case no touch is reported. Applicable on Windows 7 only regardless of service packs.

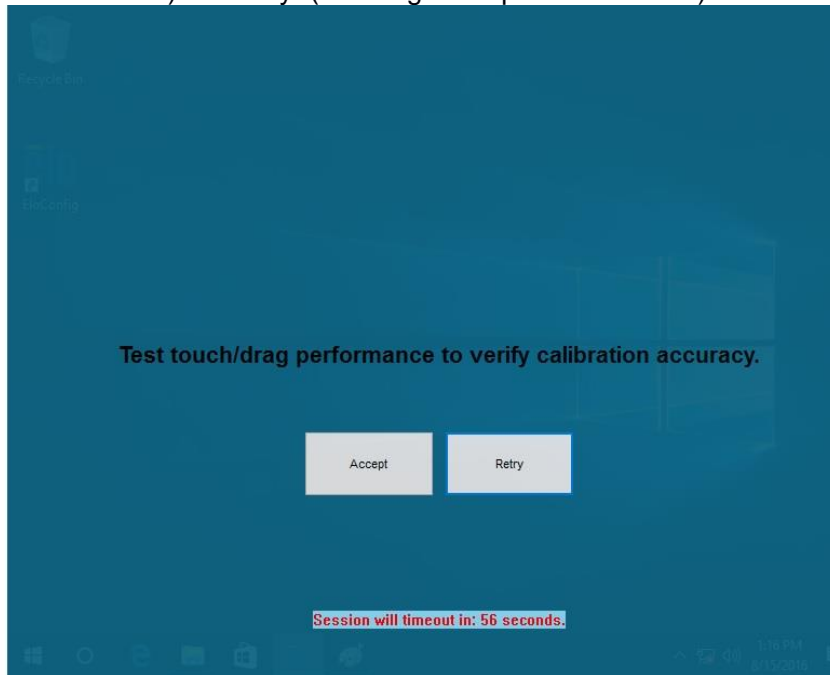
3.2 Calibrate Touch Screens

This feature serves two functions:

- Map your monitor using Microsoft's monitor mapping utility
- Calibrate your Elo touch screen(s) using Elo's calibration tool.

3.2.1 Three-point Calibration

The Elo calibration tool is used to calibrate touch recognition on supported Elo touch screen monitors. After touching all 3 targets, the screen will show "Accept" and "Retry" buttons. The user can then test the calibration accuracy before selecting either "Accept" (saving calibration data) or "Retry" (re-doing the 3-point calibration).



Note: Some advanced settings under "Touch Screen Properties" will not be configured until the touch screen has been calibrated.

User can start the calibration session in two ways:

Method one - from EloConfig UI:

User can start a calibration session by clicking EloConfig – Calibrate Touch Screens. The user will follow the screen instruction to touch specific target and complete the calibration process.

Method two - from command line (3 options):

Option 1: Users may also start the calibration tool from the command line by typing:

EloConfig.exe /align

From the "Elo Touch Solutions" directory located under "Program Files." The user will

experience the same as starting the calibration session from EloConfig UI.

Option 2: If the user wants to calibrate a touch monitor to a known display, the user may use command line below:

EloConfig.exe /align 3

The above command will calibrate a touch monitor to display number 3 which is an “Elo Monitor Number” as shown by EloConfig – About – Identify Monitors. When a valid Elo Monitor is following command option “/align”, the calibration session will terminate after any touch monitor is calibrated.

Option 3: If the user wants to calibrate a touch monitor to the primary display only, the user can use command line option “primary” as follows:

EloConfig.exe /align primary

Option 4: If the user wants to calibrate a touch monitor to the non-primary display only, the user can use command line option “nonprimary” as follows:

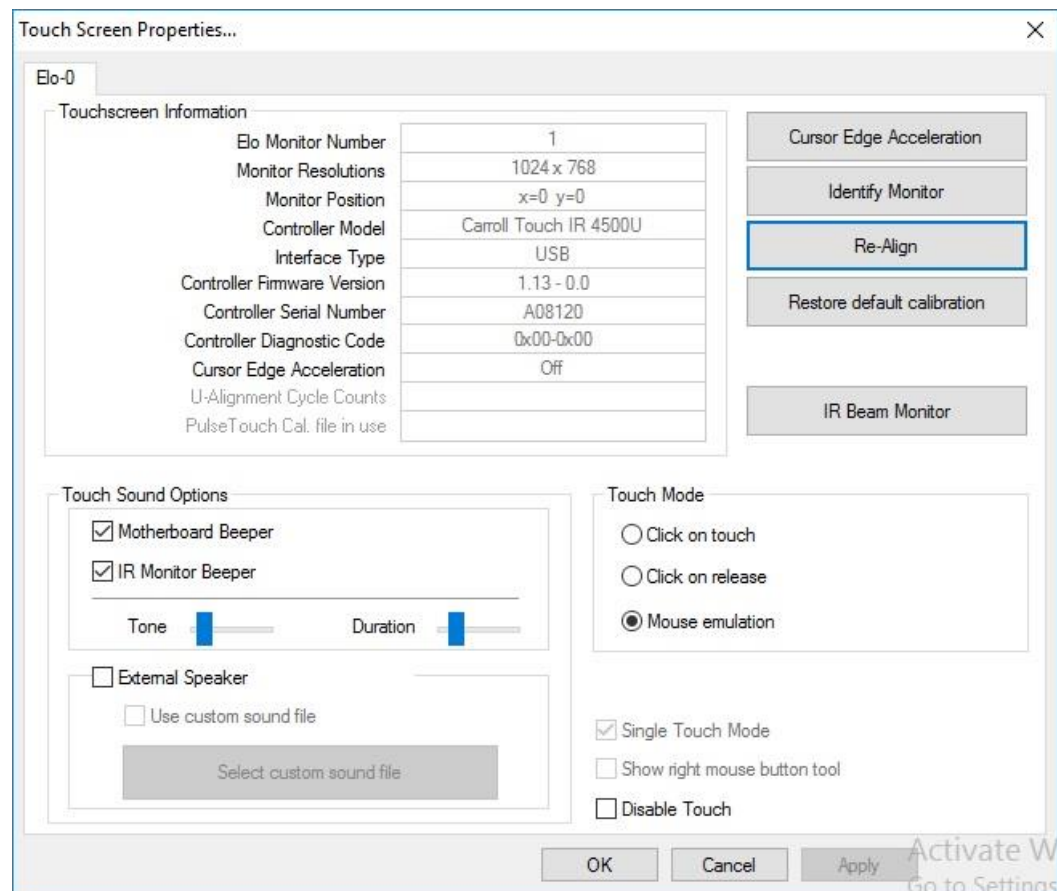
EloConfig.exe /align nonprimary

Please note option 4 works only if the system has exact two monitors connected (otherwise the non-primary will not be unique).

3.2.2 One-touch Calibration

PulseTouch and pCap touch monitors usually do not need to be calibrated. But if a system has multiple display monitors connected, the user will need to run the calibration to map touch to display; in this case the user needs to touch only one target during the calibration process.

3.3 Touch Screen Properties



Each Elo's touch monitor is presented by a tab with title "Elo-0" or "Elo-1"... where "0" means the touch monitor has not yet been calibrated; and "1" means the touch monitor is calibrated on Elo Monitor Number 1. Please note Elo's monitor number may not always be the same as Windows Desktop Monitor number.

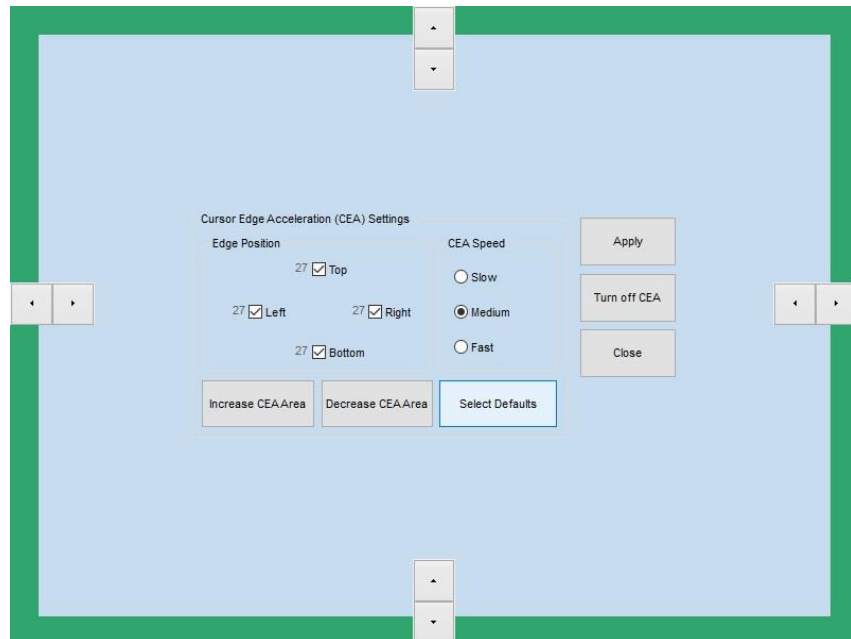
Launching "Touch Screen Properties" will display various properties of each connected (and supported) Elo touch screen such as Monitor Resolution, Controller Serial Number, Controller Firmware Version, etc. In addition to this information, users will be given the ability to "Disable Touch" and "Restore default calibration". In addition, touch monitors with the 2701 controller and selected firmware revisions of the 2521 and 2515-07 controllers will support the ability to "Enhance touch sensitivity." Note for this setting to take into effect (this includes enabling or disabling the setting); the user must allow two to three minutes. For immediate result, the user can just power cycle the monitor.

User can perform following actions within this property page:

3.3.1 Cursor Edge Acceleration (CEA)

The Cursor Edge Acceleration tool is used to increase sensitivity along the edges of the touch screen. This option allows users to access areas of the screen that would otherwise be

limited by the frame of the monitor. Note that CEA may not be configured until the monitor has been calibrated.



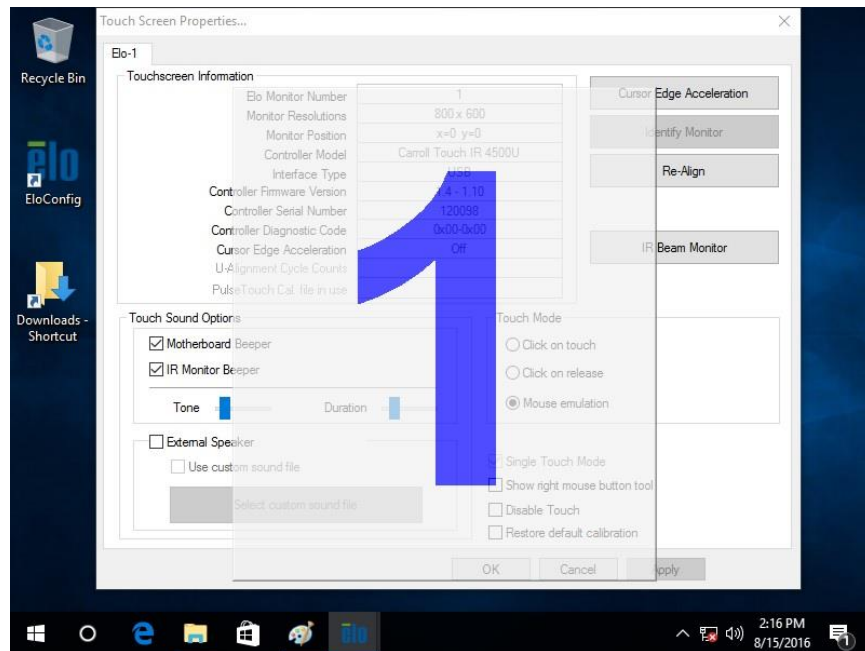
To enable CEA, click on the "Select Default" button and specify the desired parameters. The position of CEA may be manipulated for all edges at once by means of the "Increase/Decrease CEA Area" buttons, or individually by means of the arrows along each edge. Additionally, CEA for particular edges may be disabled by unchecking their respective box.

The user will also be given the option to select between CEA speed settings (slow, medium, and fast).

The user must click "Apply" before closing/exiting out of the utility for any changes to take effect. To disable CEA, click on the "Turn off CEA" button.

3.3.2 Identify Monitor

This function will flash the number of the monitor on the screen/display. This is primarily used when there are multiple monitors connected to the system. Note that this utility will not function until the monitor has been calibrated.



3.3.3 Re-Align/Align

Use this option to recalibrate the selected monitor. If the monitor has not been calibrated, the button will be labeled “Align” instead of “Re-Align”.

3.3.4 PulseTouch Preference

This option will only be available and visible when a supported PulseTouch monitor is connected to the system and its PulseTouch tab is selected. Clicking on the PulseTouch button will launch the PulseTouch preferences window allowing the user to select four unique usage types: Point of Sale, Signature, Gaming, and General.

Note that Apply must be selected prior to exiting the preferences window before any changes are applied.

3.3.5 Single-touch mode

When Single-touch mode checkbox is checked, single-touch will be enforced for this device. When this checkbox is unchecked, action below will be taken:

- If the touch monitor is not yet calibrated: device's touch capacity will be set to the corresponding value as specified by MaxTouch under EloOptions.ini's **[Setup Options]** section;
- If the touch monitor is calibrated: device's touch capacity will be set to the corresponding value as specified by MaxTouch in per-monitor section; if the per-monitor section or MaxTouch entry does not exist in EloOptions.ini, then MaxTouch specified under **[Setup Options]** will be used if the entry exists (otherwise set to device's max capacity **MaxTouch = 0**).

3.3.6 Alternative calibration approach

By default, calibration is carried out by the controller (if onboard calibration is supported). But the user might have special case that need to bypass controller onboard calibration and use

driver calibration. In this case, the user needs to configure an option in EloOptions.ini file. Under the section [Calibration], change the value "DriverCalibration" to 1. User does not need to reinstall the package for this change to take effect.

3.3.7 Beep on Touch

"Beep on Touch" is a setting in which a "beep" sound is generated on contact with the monitor. The user will have the option to enable or disable each of the following settings independently:

- **External Speaker**
Plays a beep through an external speaker. If user enables the "Use custom sound file" option, he/she will be given the option to choose a personal *.wav file to be played instead of the beep.
- **Motherboard Beeper**
Plays a beep through the internal motherboard speaker. With this option selected, the user will be given the option to modify the beep's "Tone" and "Duration" through two independent separate slider bars.

3.3.8 Touch Mode

The "Touch Mode" setting has three options:

- "Click on touch" expresses that the "click" will be initiated on contact with the monitor.
- "Click on release" expresses that the "click" will be initiated upon the release of contact with the monitor.
- "Mouse emulation" expresses that a "click" will be initiated only upon tapping the monitor, and allows for dragging the cursor and/or objects across the screen, similar to that of a mouse.

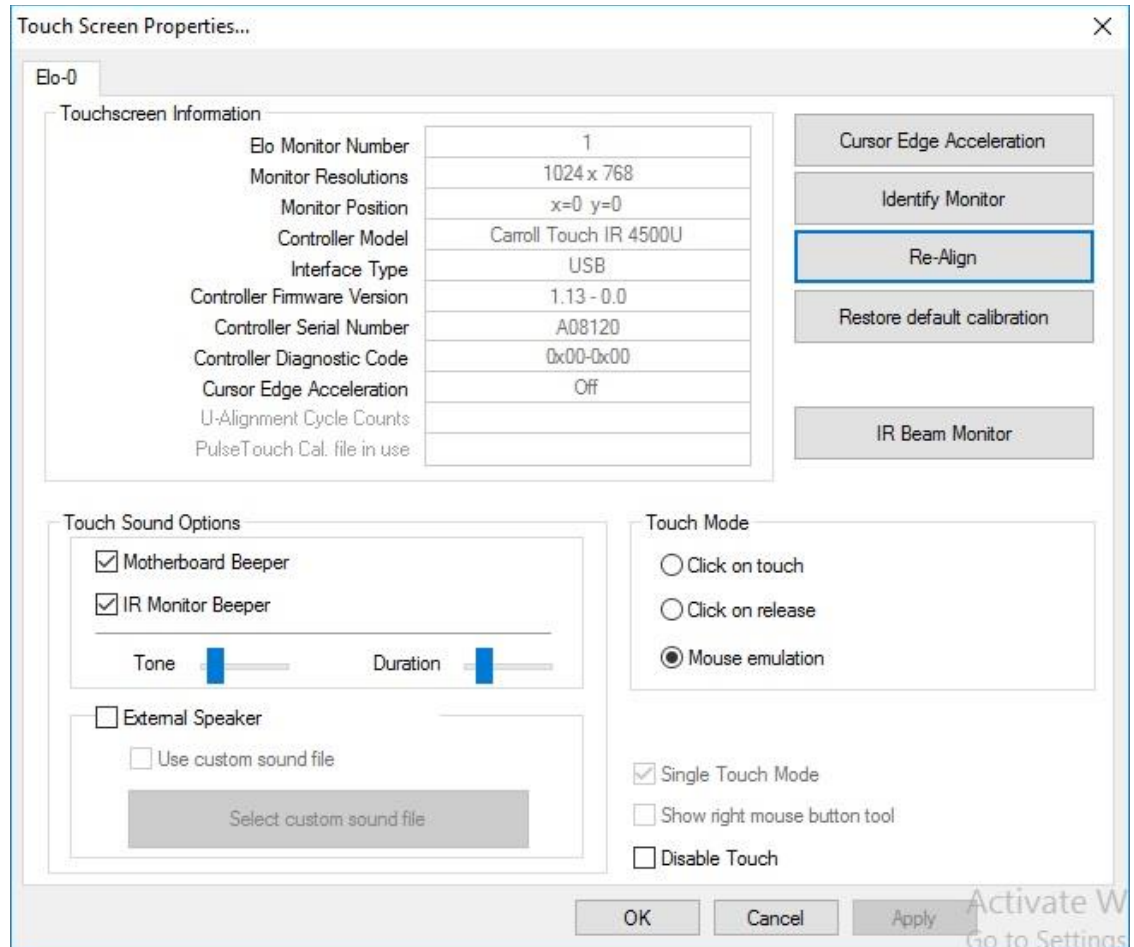
3.3.9 Single Touch Mode

The "Single Touch Mode" setting allows the user to toggle between multi-touch and single-touch on multi-touch capable monitors. This is a global setting meaning that all supported touch monitors connected to the system will be limited to single-touch if the setting is enabled.

3.3.10 IR Beam Monitor

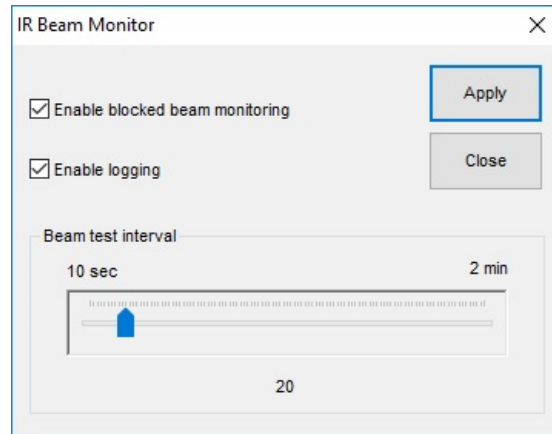
The IR Beam Monitor function allows user to monitor the health of the IR touch monitor. User can configure this function to periodically check if the Infrared LEDs and receivers are functioning properly.

In the Touchscreen's properties page, the "IR Beam Monitor" button will be visible for IR touch monitors after the monitors are calibrated.

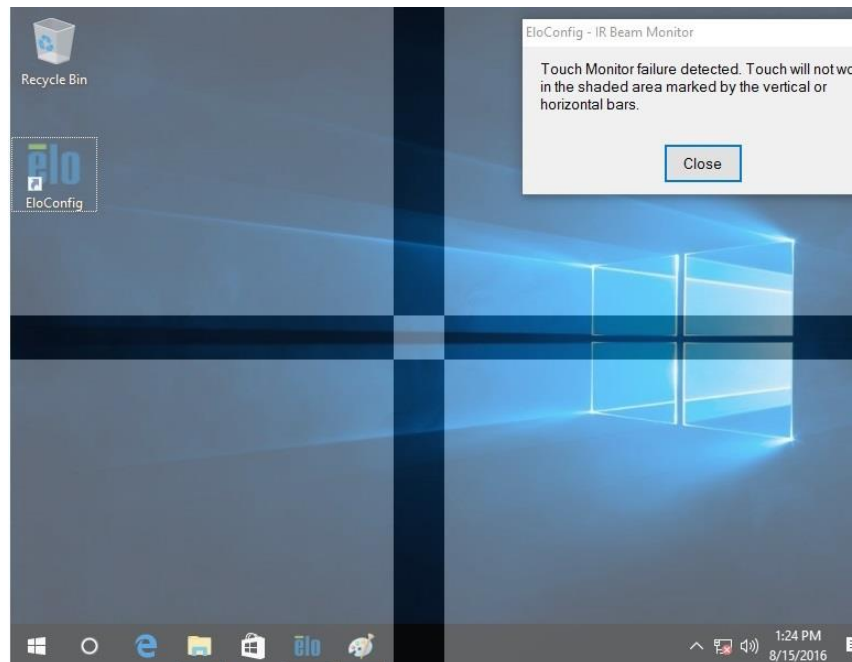


Users can set options below for monitoring IR beam status:

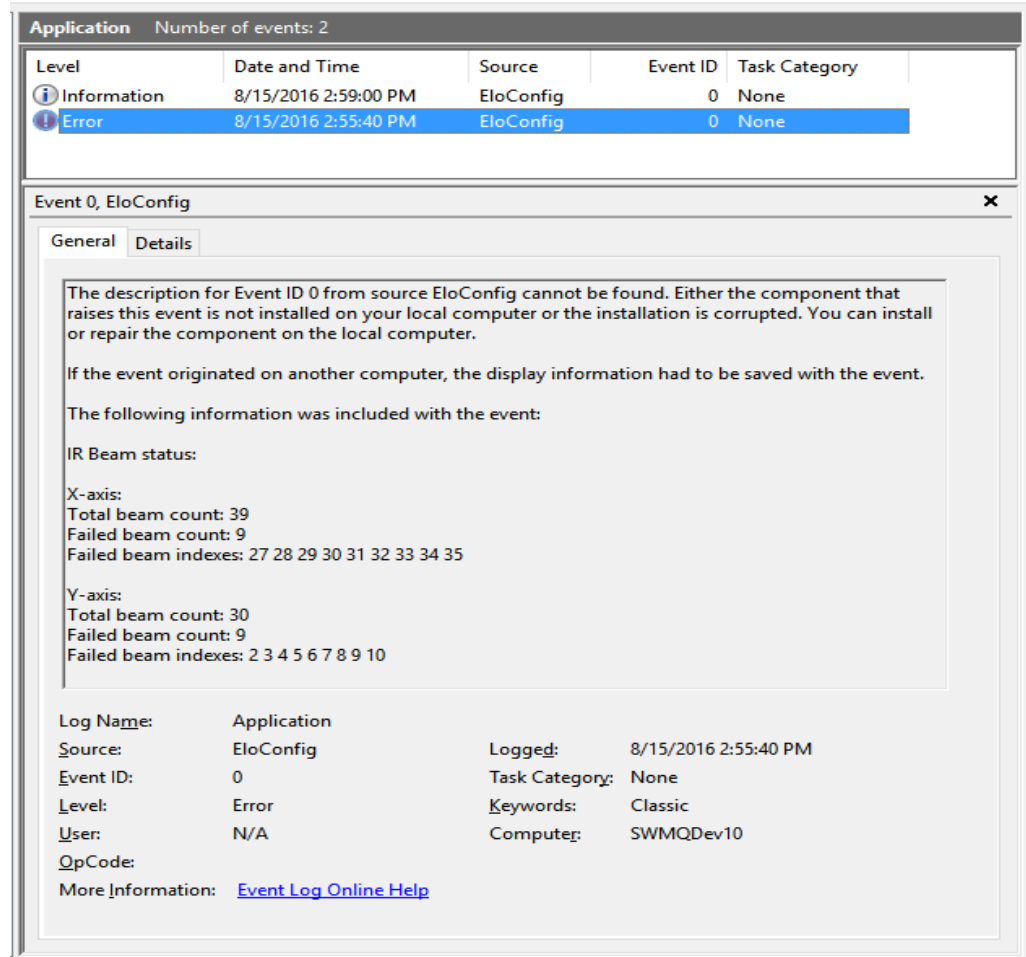
- Enable or disable beam health monitoring.
- Enable logging: Write beam failure messages to Windows' Application event log with event error level "Error" under Source "EloConfig". Subsequence failures at the same location will not generate duplicated event into the Application log. An "Information" level event is logged when all beams return to working condition.
- Beam test interval: Specify beam scan frequency in the range of 10 to 120 seconds.



When the beam monitoring is enabled, a message box along with a shaded a vertical and/or horizontal bar will pop up to indicate the failed beams or blocked area. Touch will not function within the shaded area on the display until the failed condition is corrected.

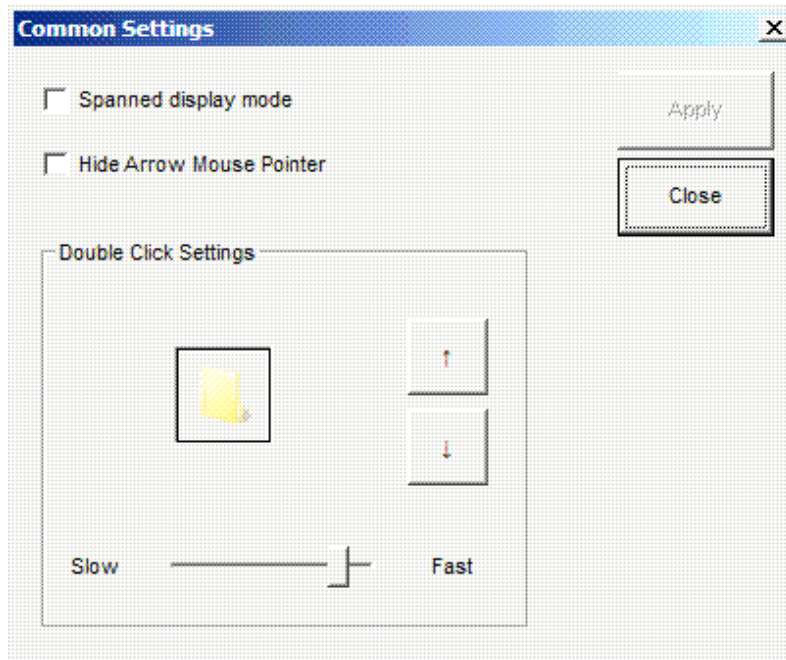


Events as shown in Event Viewer's Application Log:



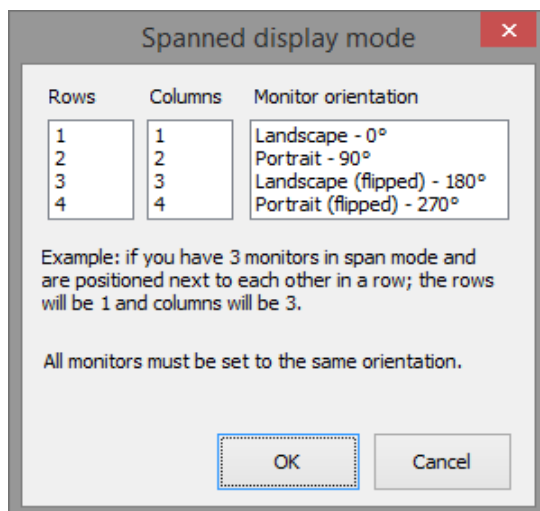
3.4 Common Settings

Configure shared touch screen settings such as hiding the Arrow Mouse pointer, Spanned display mode and Double Click Settings.



3.4.1 Spanned display mode

The “Spanned display mode” option is only available when a single “spanned” monitor is detected on the system. If the system is not configured in “spanned” mode, this option will be grayed out.



Enabling the “Spanned display mode” option followed by clicking the “Calibrate Touch Screens” button in the main EloConfig page will display a configuration window asking you to provide the number of rows, columns, and monitor orientation in the spanned setup. After this information has been entered, click the OK button and you will be able to calibrate each supported touch monitor in the setup. Note that in order to be able to calibrate your monitors in the spanned set up; all monitors need to be set up in the same orientation.

To calibrate Elo touch monitors in video span mode, user needs to make change to the EloOptions.ini to enforce 3-point driver calibration as following:

```
[Calibration]
DriverCalibration = 1
```

This will invoke the 3-point calibration for all Elo touch monitors.

3.4.2 Hide Arrow Mode Pointer

This feature allows the user to turn on/off the standard mouse cursor.

3.4.3 Double-click Settings

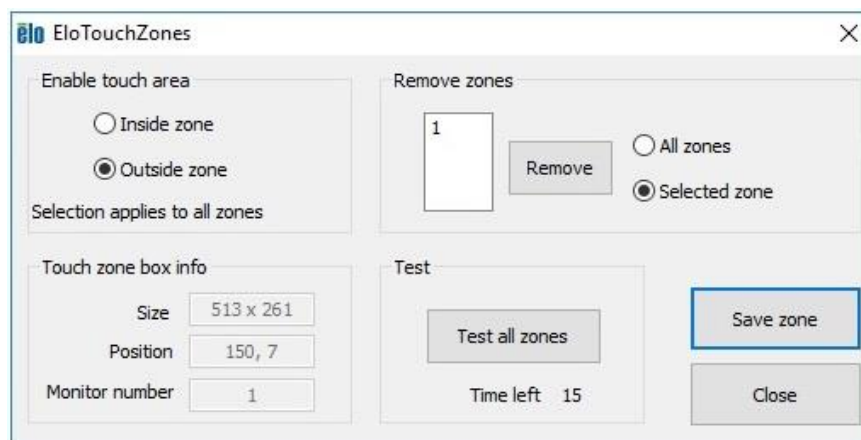
The double-click area represented by the square with a folder image defines the maximum area a double-click is recognized. If two clicks are not within this area it will not be considered as a valid double-clicks. The user can change the size of the area to make double-click easier to be registered by the system. The bigger the area the easier a double-click gets recognized by the system.

The user can also set the maximum time interval between the two clicks.

User can verify if the double-click setting works by performing a double-click on the image and checking for the folder open/close status.

3.5 Define Touch Zones

This utility allows the user to define certain areas, or “touch zones”, on the display, where touch is either enabled or disabled. The user can define a maximum of 64 zones for a single touch screen.

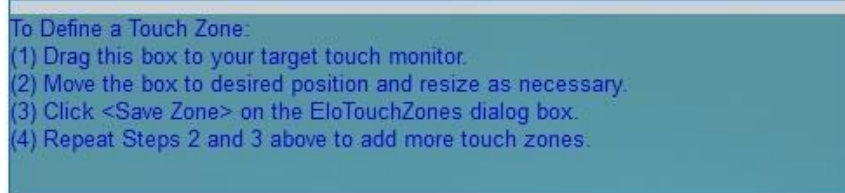


To define a touch zone:

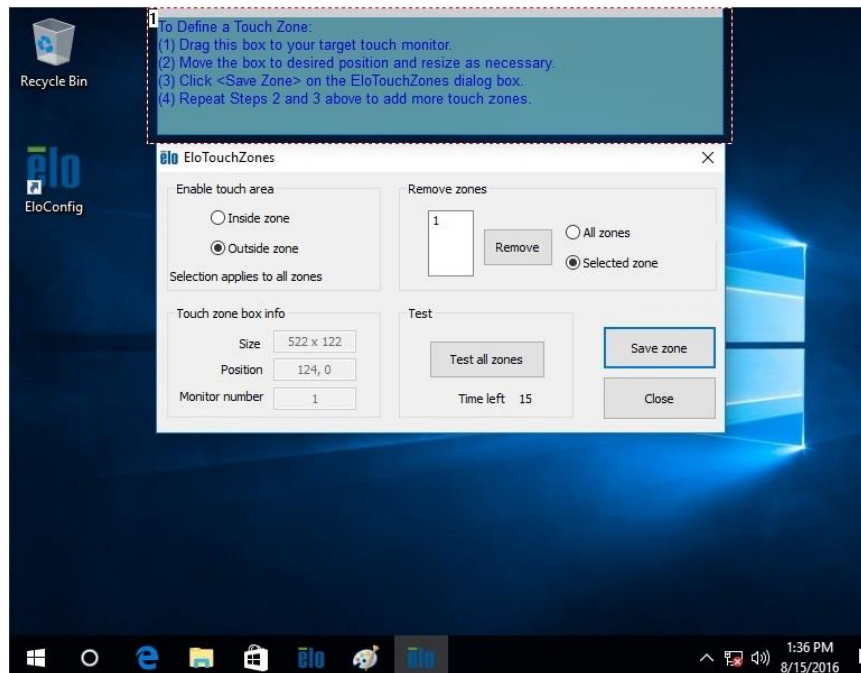
Click the “Define Touch Zones” button. Two dialog boxes will be brought up:

- The dialog box titled “EloTouchZones” provides options for setting a touch zone and allows users to delete existing touch zones.
- The other dialog box, which does not have a title bar, will be used to define a new touch zone.

- Users can drag this second box to any touch screen and adjust its size and position.



- It may be specified in the “EloTouchZones” dialog box whether touch will be enabled “inside” or “outside” the zone. If the user chooses to have touch enabled “inside zone”, touch will only work within each defined touch zone. Touch will be disabled outside of all touch zones.
- To save the zone, click “Save Zone” from the “EloTouchZones” dialog box.



To test the touch zone(s):

- Click the “Test All Zones” button in the “EloTouchZones” dialog box. This will test all defined zones with the current changes.
- Test mode will last 15 seconds. During the 15 second period, the “EloTouchZones” dialog box will be disabled and will not respond to any user input.
- After the 15 seconds, test mode will exit and the user can continue to define new zones or remove existing zones.

To define additional zones:

- Drag the second box with no title bar to a new position on the desired display and adjust it to a desired size.
- Click “Save Zone” on the “EloTouchZones” dialog box.
- Any previously defined touch zone will be shown as a flashing, dashed rectangle.

To delete an existing zone:

- (1) To remove a single zone, drag the second box with no title bar to the desired display, click the “Selected Zone” radio button in the “Remove Zones” group. Select the number

- of the unwanted zone in the list box, then click “Remove”.
- (2) To remove all zones and allow touch to be enabled on the entire desktop, select the “All Zones” radio button. Then, click the “Remove” button.

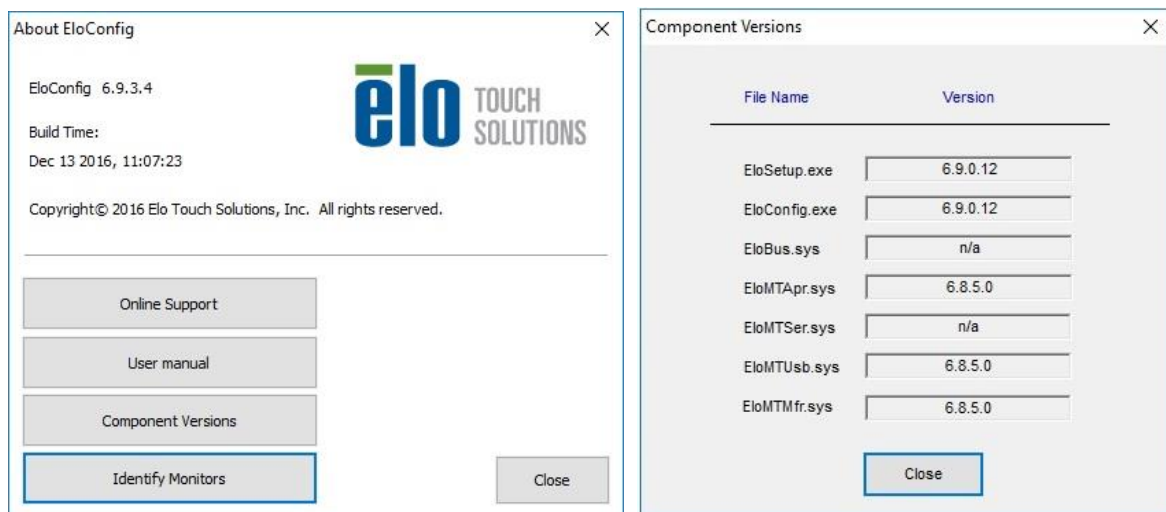
3.6 About

The About box provides the driver version, build time, Elo touch screen information, and copyright information. In addition, the About box also provides links to Elo’s Online Support page, where users can get support and information on Elo’s products, and a “User Manual” document, which serves as both a readme and a user guide for this application.

Component version: show version information for both drivers and EloConfig. Please note that a kernel driver file (.sys) versions may not necessary have the same versions as EloSetup.exe and EloConfig.exe.

Identify Monitors: User can click this button to view current “Elo Monitor Number” for each monitor connected to the system. The “Elo Monitor Number” is not necessarily the same as “Windows Monitor Number” as identified in Windows Desktop. If an user use command line to start calibrate a touch monitor to particular monitor, the user should use “Elo Monitor Number” to specify the targeted monitor. For example, the command line below will calibrate a touch monitor to Elo Monitor 3:

EloConfig.exe /align 3



4. Instructions for Windows 7 Embedded

Note: This section is for reference purposes, the actual Elo driver package name may be different.

The following notes are intended as a guide for enabling multi-touch functionality with Windows 7 Embedded.

- 4.1.** Use Tap.exe to generate a PMQ file including all hardware information of target system.

4.2. Start ICE (Image Configuration Editor), create an ANSWER file, and import this PMQ file. Add the following components from “Distribution Share” to the ANSWER file:

- a. \FeaturePack\Application Support\COM OLE Application Support
- b. \FeaturePack\Devices and Printers\Device Framework
- c. \FeaturePack\User Interface\Tablet PC Support

4.3. From the menu of ICE, select [Validate] -> [Add Required Packages], or resolve the dependencies manually.

4.4. There are different ways to install the Elo multi-touch driver for Windows 7. The easiest way to do it is as follows:

- a. Download the latest Windows 7 driver version from www.elotouch.com/support/downloads, and unzip it to a folder. For example, \EloMultiTouch_6.7.0\ if version 6.7 was downloaded. The following instructions assume a folder called \EloMultiTouch_6.7.0\ was created.
- b. Copy \EloMultiTouch_6.7.0\ to “\$OEM\$ Folders” in “Distribution Share” by creating the following structure on the file system. \OEM\$\\$1\ means the root directory on target system.
\\DS\OEM\$ Folders\EloTouch\OEM\$\\$1\EloMultiTouch_6.7.0\
- c. Now go back to ICE. “EloTouch” will show up under “\$OEM\$ Folders” in “Distribution Share”. Right-click “EloTouch” and select “Insert Oem Folders Path”.
- d. From the menu of ICE, select [Insert] -> [Synchronous Command] -> [Pass 4 specialize...]. Enter the following command (/s means silent install. /iu means USB touch screen. /ia means PulseTouch touch screen).
C:\EloMultiTouch_6.7.0\EloSetup.exe /s
- e. From the menu of ICE, select [Tools] -> [Create Media] -> [Create IBW image From Answer File]. Select a bootable USB drive as the target folder for the image. Click [OK].
- f. Boot up the system with this USB drive, and follow the steps of IBW (Image Builder Wizard). After the first reboot, unplug this USB driver or change the BIOS Boot setting to boot up from the target system.

5. Touch configuration utility: EloDriverDefaults.exe

EloDriverDefaults is a console utility to be used by administrators to enforce certain touch properties for Elo touch monitors. This tool must be used after Elo touch package has been installed. The utility will read EloOptions.ini as its input. To open the EloOptions.ini for editing, the user must run Notepad as admin and then open the EloOptions.ini located in the installation folder, namely C:\Program Files\Elo Touch Systems\EloOptions.ini.

5.1 Purpose of the tool

When new touch monitors are connected to a system, they can start functioning with certain default properties as defined under section name **[Device Default]** in EloOptions.ini.

5.2 Supported touch properties

5.2.1 Beep options:

User can specify sound source of beep (touch alert) or no sound at all:

Beep off (0)

Beep from motherboard beeper (1)

Beep from external speaker (2)

Beep from both beeper and speaker (3)

5.2.2 Touch modes:

User can specify the touch action to be interpreted by the system as a mouse click:

Click on touch (0)

Click on release (1)

Mouse emulation (6)

5.2.3 Enforce single touch (0|1)

This option is for Windows 7 or newer systems. User can choose to enforce single touch on touch monitors capable of multi-touches.

In EloOptions.ini, the above properties might look like this

[Device Default]

MaxTouch = 0

MouseMode = 6

ExternalSpeaker = 1

MotherboardBeeper = 0

IRMonitorBeeper = 0

BeepDuration = 100

BeepFrequency = 800

EnableTouch = 1

EdgeAcceleration = 2, 2, 2, 2, 2

Please note: value of MaxTouch is ignored if ForceMouse under [Setup Options] is 1; and touch limit is not enforced if MaxTouch is 0.

[IR Beam Monitoring]

Enable = 1

Logging = 1

ScanFrequency = 20

Please refer to EloOptions.ini for detailed instructions.

5.3 Command line options

5.3.1 -s Silent mode, the console box (cmd.exe) will not be shown.

5.3.2 -v Verbose mode, the console box shows running status.

5.3.3 -l Text log file will be generated. The log will be located under C:\ProgramData\. User needs to set Folder Options to enable the "Show hidden files, folders and drives".

5.3.4 -h Show help on all command options.

5.3.5 -r EloDriverDefaults reads settings from the first touch device (screen index 0) and writes into EloOptions.ini. User can use this command line option to populate device global parameters in EloOptions.ini from existing touch device settings.

5.3.6 -w EloDriverDefaults reads settings from EloOptions.ini and writes them into Elo driver defaults storage location in system registry:

HKLM\System\CurrentControlSet\Services\EloTouchscreen.

Then EloDriverDefaults will apply the settings to each of the touch devices connected to the system.

User can use this option to store driver defaults in systems registry so that when new device is connected to the system, these default parameters will take effect for the device.

5.3.7 -m Apply per-monitor settings as defined in EloOptions.ini. Each monitor has a section in the format [Monitor1], [Monitor2]... For details please see section below: **5.5 Per-monitor settings**.

5.3.8 -i Apply IR beam monitoring settings as specified in EloOptions.ini under section [IR Beam Monitoring].

5.4 Pre-conditions must be met before running the tool:

5.4.1 EloDriverDefaults.exe must be executed under the Elo multi-touch package installation folder, namely:

C:\Program Files\Elo Touch Solutions\

5.4.2 The utility must be run with system Administrator's privilege.

5.4.3 Command line options **-r** , **-w** , **-m** must be used one at a time, none of them should be used with another as command line options.

5.5 Per-monitor settings

Users can set touch properties on a per-touch monitor basis. In EloOptions.ini, the user can specify entries in the format below where each monitor is represented by a section with name like Monitor1, Monitor2, up to 32 touch monitors. These setting will only be applied if the monitor is calibrated.

[Monitor1]

ExternalSpeaker = 1

MotherboardBeeper = 0

IRMonitorBeeper = 1

MouseMode = 6

[Monitor2]

ExternalSpeaker = 1

MotherboardBeeper = 0

IRMonitorBeeper = 1

MouseMode = 6

6. Appendix

6.1 Installation/Uninstallation from Device Manager

6.1.1 Installation

- Open Windows Device Manager.
- Under <Human Interface Devices>, identify Elo's "USB Input Device" (Properties -> Details -> Hardware IDs shows PID=0x4E7).
- Right-click on Elo's <USB Input Device>, and follow these steps:
 - Update Driver Software...
 - Browse my computer for driver software
 - Let me pick from a list of device drivers on my computer
 - Click the "Have Disk..." button
 - Browse to the location of Elo package and choose EloMTUsb.inf
 - Choose the correct entry (For Example, "Elo Touch Solutions Touchscreen 0x22 2515U IT Plus")
 - Click "Next" to complete the installation.
- Identify Elo device under "HID-compliant consumer control device", and repeat steps a through g above, but at step f, choose "Elo Touch Solutions Touch Screen - USB HID MT Collection".

6.1.2 Uninstallation

To uninstall Elo drivers from the Device Manager, right-click on "Elo Touch Solutions Touch Screen - USB HID MT Collection", and select Uninstall. Repeat process for "Elo Touch Solutions Touch Screen 0x22 2515U IT Plus".

You may need to manually refresh the device list (at root level, choose "Scan for hardware changes") to get the device status updated to system defaults. It may take a while (10 - 30 sec) for the "USB Input Device" and "HID-compliant consumer control device" to get restored.

6.2 Sending Smartset Commands

Users can specify Smartset commands in EloOptions.ini to be sent to the controller whenever Elo's device driver is loaded. This feature applies to Elo touch screens using USB or Serial (RS-232) interface with Elo's device driver installed.

6.2.1 Format of the Smartset Command in EloOptions.ini:

Specify Smartset Commands under section [Smartset Commands]. Smartset commands listed under this section will be sent each time Elo's device driver is loaded. This happens when the system reboots; or for USB interface, when the USB cable is re-plugged in.

Each Smartset Command takes one line. Below is an example line of a Smartset command (n1 to n8 are decimal numbers):

my_ss_command = n1 n2 n3 n4 n5 n6 n7 n8

In the example above, "my_ss_command" is the string you name this line of Smartset commands.

The contents of each Smartset Command **must be in 8 positive DECIMAL numbers (<= 255) and separated by a space; No HEX or CHARs.** The 8 numbers represent the 8-byte Smartset Command.

6.2.2 Smartset Command Limitations:

There is no limit to the number of Smartset commands that can be sent. For example, if 10 Smartset Commands (10 lines) are specified under the [Smartset Commands] section, all 10 Smartset Commands will be sent to the controller when the Elo's device driver is loaded.

6.2.3 Calibration on system with multiple monitors in spanned display mode

The "Span Mode" is a special video setup on a system with multiple monitors configured to behave as a single big video surface "spanned" across all the monitors. The multiple monitors can consist of Elo's touch monitors with/without regular display monitors.

With span mode configured, the user must check "Spanned display mode" in the "Common Settings" window before running calibration. Prior to calibration starting, a small window will appear asking the user to provide the number of rows and columns of the spanned setup (For example, if the spanned setups consist of three monitor placed side-by-side horizontally, the row number is 1, and the column number is 3). After this information has been entered, calibration will start.

6.2.4 Border touch warning for 2515-07

Elo driver will show a warning message which tells the user "Please remove any contact from the monitor border area" if you touch and hold the border/side for about 2 seconds, put a sticky note on the border, or squeeze the border. If you touch the border shortly and lightly, no warning message will appear.

7. Contacting Elo Touch Solutions:

Elo has technical support offices around the world. By telephone, e-mail or fax, you can find an office that is open and staffed with personnel to assist you with questions or problems with Elo products. Consult the list below for the office which can best serve you.

Website: <http://www.elotouch.com>

Technical support: <http://support.elotouch.com/TechnicalSupport/>

Customer Service: <http://support.elotouch.com/CustomerService/>

Mailing Address:

Elo Touch Solutions, Inc.

670 N McCarthy Blvd

Milpitas CA 95035 USA

Phone: (800) 557-1458
(408) 597-8000