

# FIND YOUR STUDENT HOUSING

Central flats on a student budget

## StudentKolding

StudentKolding is a free platform where you can apply for all student flats in Kolding.

You only have to pay for a membership in the housing association you get a flat in. The housing associations handle contracts, keys, payment etc.

## Essential Info – Applying for a Student Flat

Once you **sign a contract**, you are **legally required** to pay rent and fees as stated. Late payments may result in extra charges and registration with RKI.

**Termination** must go through the housing association. **Check your contract** for notice terms.

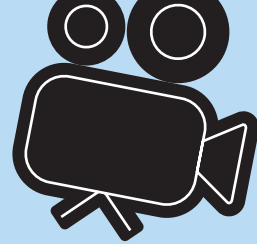
You can only have **one active application** with StudentKolding. Multiple applications will be deleted.

Adding more flats to your application increases your chances of receiving an offer. **Be sure to only select flats that match your budget.**

Before moving in, you pay **first month's rent, utilities, and a deposit** (usually three months' rent, but this varies).

Flats are divided into **price types**, and you join a **waiting list** for each type you select.

Payment is by **bank transfer** only. International transfers can take up to **8 business days**. You'll get the keys once payment is received and the previous tenant has moved out.



## Nice to know

Register at [studentkolding.dk](http://studentkolding.dk), choose price types, and join the waiting lists (flats are unfurnished).

Your application becomes **active 6 weeks** before your move-in date. You'll start receiving offers via email.

**Respond within the deadline**, or your application will be deactivated.

If you accept, the housing association will contact you with the contract and move-in details.

If you **reject three offers**, your **application is deleted** and you'll need to reapply.

**Students moving from abroad** have the highest priority on the waiting list.

Utility prices are **estimates** based on previous tenants. You'll pay extra if you use more—or get a refund if you use less.

There is a list of **available flats** at [studentkolding.dk](http://studentkolding.dk)



## When can you move in?

You can move in **three months before** the start of your studies, and you are allowed to stay three months after you have completed your education.

It is possible to stay for **a year after your studies** have ended in some of the flats.

You can move in on the **1st or 15th** of each month.

## How many people can live in each flat?

1-room: A maximum of 2 adults and 0 children are allowed to live in a 1-room flat.

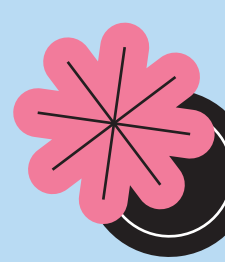
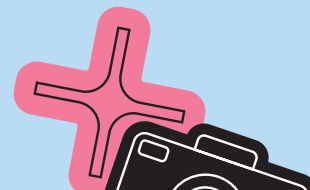
2-room: A maximum of 4 people are allowed to live in a 2-room flat. Please note that a child counts for 1 person. Applicants with children can only apply for the 2-room flats.

Applicants on a joint application (applicant and co-applicant) have first right to the 2-room flats.

## Prices (excl. utilities)

1-room: 2.000 – 4.600 DKK

2-room: 2.700 – 6.200 DKK





## Location of flats

There are over 1.100 flats for students in Kolding. Most of them are located in the center of Kolding in walking distance from the campus area.

Around 400 new student flats have been built near the campus area since 2015.

## Furnished flats

Most flats are not furnished.

StudentKolding is offering a few furnished 1-room or 2-room student apartments at Åparken 18.

## Other Housing options

Visit **campuskolding.dk** if you want to know more about other housing options, as well as life as a student in Kolding.

Campus Kolding has compiled a list of private and public housing companies, Facebook groups, tips and tricks on creative interior design, and sites for furnished flats.

Check it out for yourself and find your perfect student housing in Kolding!



## Get in touch


If you have any questions, you are welcome to contact us!

### Phone hours

Monday	10:00 - 14:00
Tuesday	10:00 - 14:00
Wednesday	10:00 - 14:00
Thursday	12:00 - 16:00
Friday	10:00 - 14:00

### Address

Contact Student Kolding  
StudentKolding  
Nytorv 11  
6000 Kolding



**Tel:** + 45 79 79 75 25  
**E-mail:** [student@kolding.dk](mailto:student@kolding.dk)  
**Web:** [studentkolding.dk](http://studentkolding.dk)

