

FOR LEASE

# Greenbriar Business Center

15760 W Hardy Road, Suite 400, Houston, TX 77060

Strategic Location with Excellent  
Access to I-45, Beltway 8 and  
Hardy Toll Road



**Sam Rayburn, SIOR**

+1 713 898 3682

[sam.rayburn@kbcadvisors.com](mailto:sam.rayburn@kbcadvisors.com)

**Jim Autenreith, SIOR**

+1 713 922 0829

[jjim.autenreith@kbcadvisors.com](mailto:jjim.autenreith@kbcadvisors.com)

**KBC Advisors | Houston**

1233 West Loop South, Suite 1270

Houston, TX 77027

**KBCADVISORS**



HOUSTON, TX

# Site Information



**175,301 SF**  
Total Building

**14' - 16'**  
Clear Height

**3 PHASE**  
Power

**AMPLE**  
Parking

**10.79**  
Acres

15832 W HARDY  
ROAD

15800 W HARDY  
ROAD

15760 W HARDY  
ROAD

15730 W HARDY  
ROAD

15702 W HARDY  
ROAD

15660 W HARDY  
ROAD

**SUITE 400 | 15760 W Hardy**

TOTAL ± 13,310 SF

OFFICE ±4,428 SF

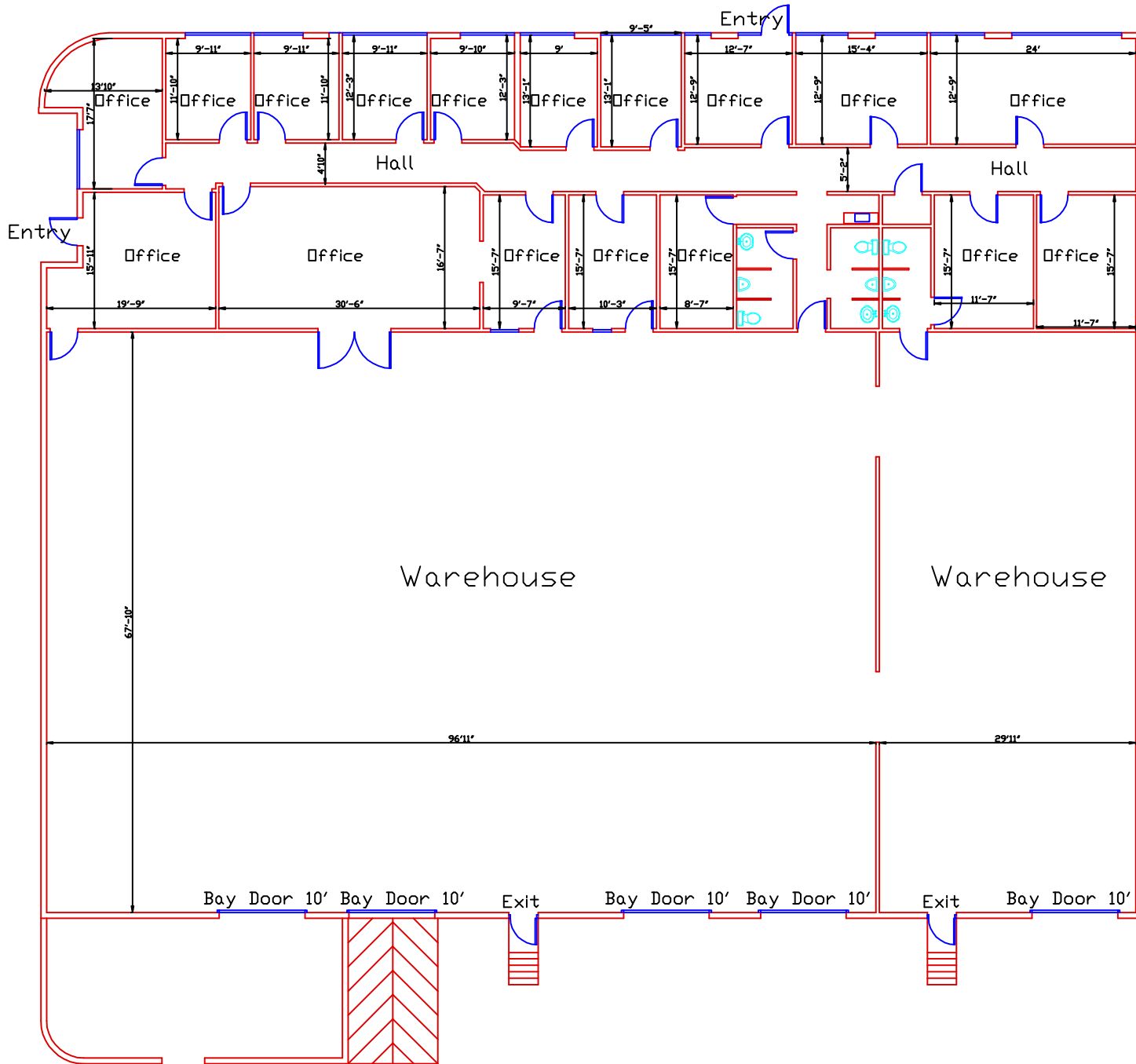
WAREHOUSE ±8,882 SF

DOCK HIGH DOORS 4

RAMP 1



# Floor Plan





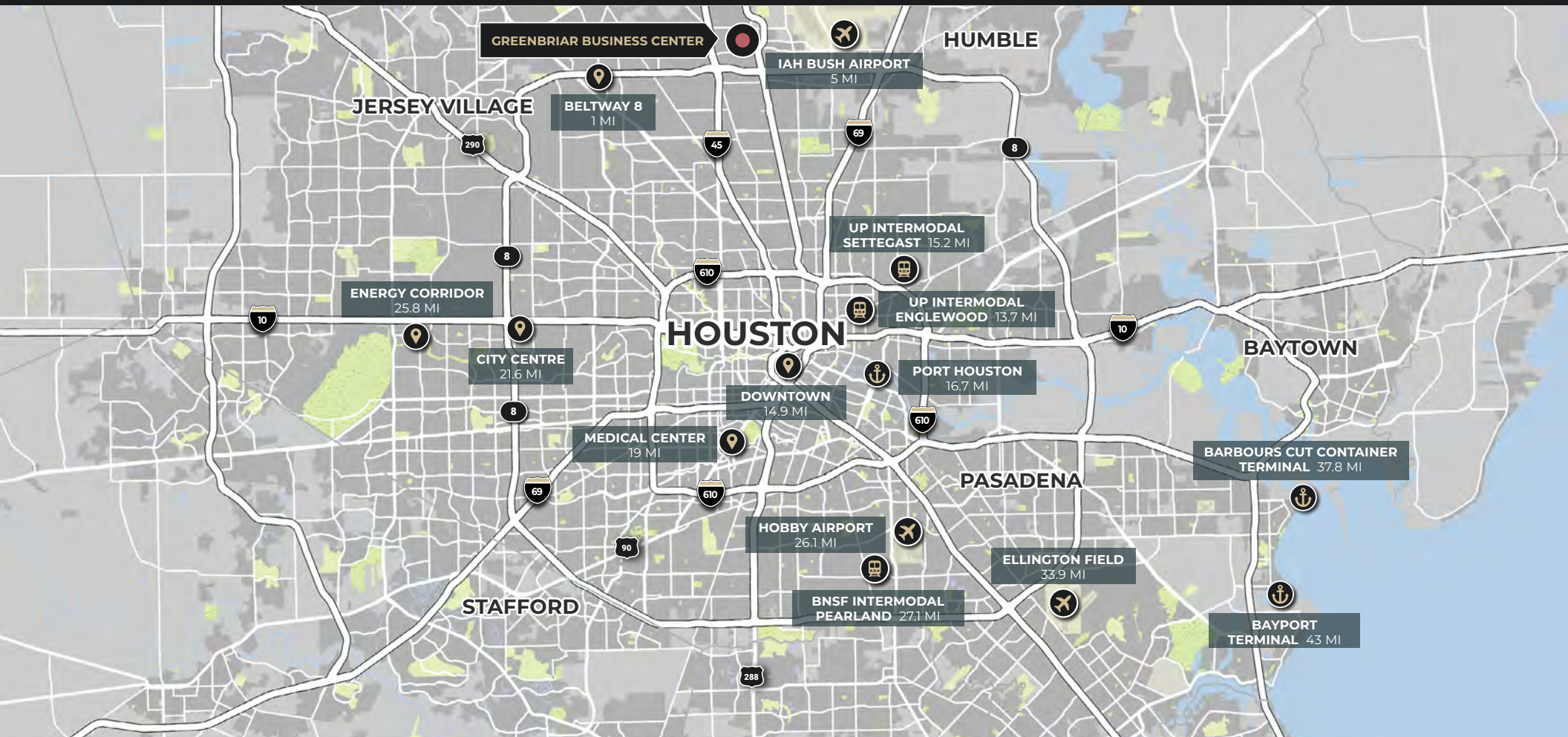
# Location & Access





HOUSTON, TX

# Premier Regional Connectivity



Sam Rayburn, SIOR

+1 713 898 3682

sam.rayburn@kbcadvisors.com

Jim Autenreith, SIOR

+1 713 922 0829

jim.autenreith@kbcadvisors.com

KBC Advisors | Houston

1233 West Loop South, Suite 1270

Houston, TX 77027

© 2025 KBC ADVISORS This information has been obtained from sources believed to be reliable but has not been verified for accuracy or completeness, and KBC Advisors disclaims any guarantees, warranties or representations, express or implied, as to the completeness or accuracy as to the information contained herein. You should conduct a careful, independent investigation of the property and verify all information. Any reliance on this information is solely at your own risk. The KBC ADVISORS logo is a service mark of KBC ADVISORS. All other marks displayed on this document are the property of their respective owners. Photos herein are the property of their respective owners. Use of these images without the express written consent of the owners is prohibited.



KBCADVISORS.COM