

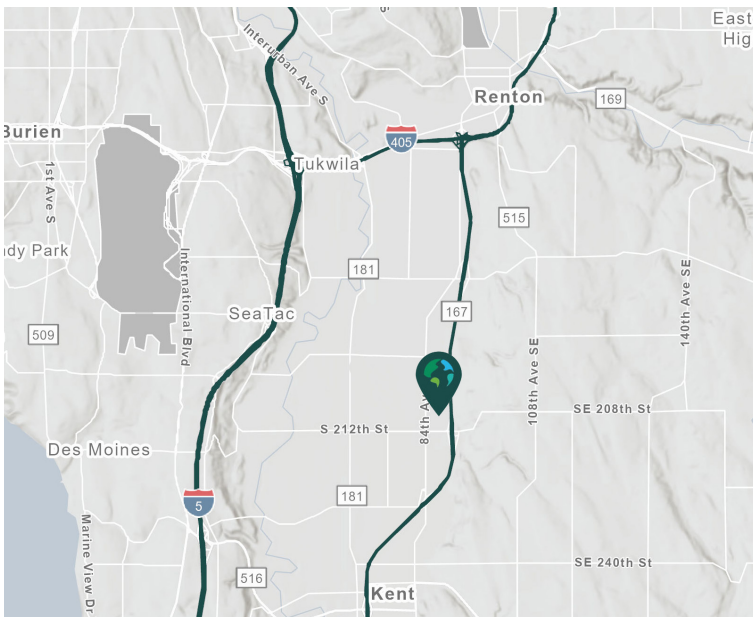
INDUSTRIAL SPACE FOR LEASE

11,700 - 57,600 SF



84th Ave S & S 208th St
Kent, WA 98032

Northwest Corporate Park Kent



Functional & Economical

- Northwest Corporate Park Kent offers a unique opportunity for flexible growth in buildings that have 22' - 30' clear height, rail access, and excellent access to all freeways.

Location

- 50-yard line location
- Great access to Hwy-167, I-5 and I-405

Advantage & Amenities

- Access to the Prologis Essential platform, which includes:
 - [Operations Essentials](#)
 - [Energy Essentials](#)
 - [Workforce Essentials](#)
 - [Mobility Essentials](#)
 - [Digital Essentials](#)



Unlock the full potential of your warehouse with one strategic, single-source partner.



Address	Available SF (Office)	Loading	Clear Height	Comments
BUILDING 8 20411 87th Ave S	43,200 (2,000)	6 DH	30'	Available now. 60' x 20' typical column spacing. Rail served. Virtual tour.
BUILDING 8 20201 87th Ave S	57,600 (2,156)	11 DH 1 GL	30'	Available now. End cap unit. 60' x 20' typical column spacing. Rail served. ESFR sprinklered. Virtual tour.
BUILDING 9 20216 87th Ave S	11,700 (757)	4 DH	24'	Available December 1, 2026. Rail served.
BUILDING 9 20408 87th Ave S	19,500 (942)	27 DH 1 GL	24'	Available August 1, 2026. Rail served.
BUILDING 13 8427 S 208th St	36,000 (2,044)	12 DH	22'	Available October 1, 2026. Rail served.
BUILDING 16 8660 S 208th St	26,050 (2,101)	8 DH 1 GL	15'	Available now. Rail served end-cap space. Virtual tour.



KBC Advisors

Matt Wood, SIOR

matt.wood@kbcadvisors.com

ph +1 206 741 1030

cell +1 206 595 6814

KBC Advisors

Hans Vieser

hans.vieser@kbcadvisors.com

ph +1 206 741 1030

cell +1 425 765 7926

Prologis

Kimberley Nemethy

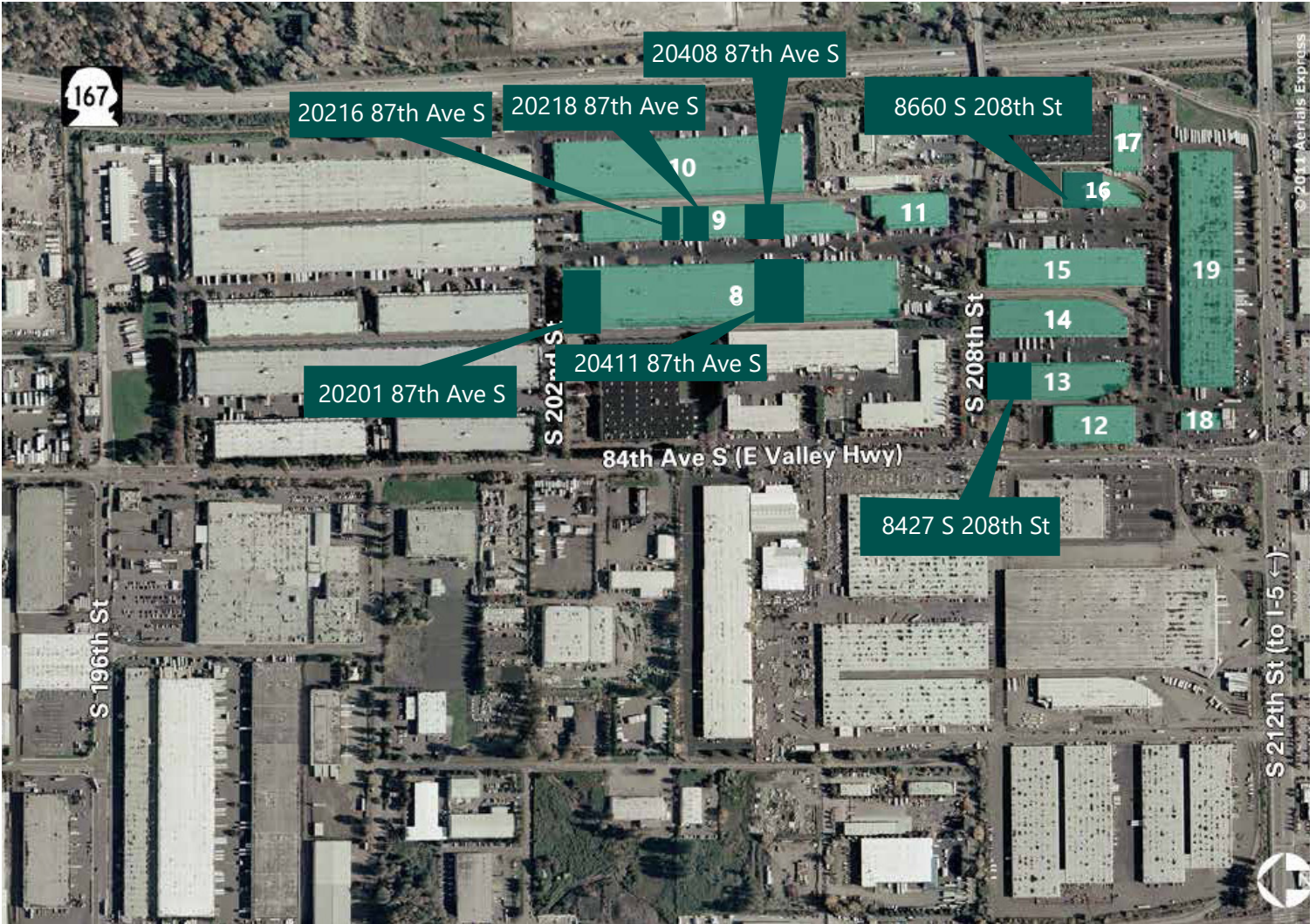
knemethy@prologis.com

ph +1 206 414 7616

cell +1 253 508 1737



Unlock the full potential of your warehouse with one strategic, single-source partner.



KBC Advisors
Matt Wood, SIOR
 matt.wood@kbcadvisors.com
 ph +1 206 741 1030
 cell +1 206 595 6814

KBC Advisors
Hans Vieser
 hans.vieser@kbcadvisors.com
 ph +1 206 741 1030
 cell +1 425 765 7926

Prologis
Kimberley Nemethy
 knemethy@prologis.com
 ph +1 206 414 7616
 cell +1 253 508 1737