

# 14,790 - 38,861 SF FOR LEASE

6719 E MARGINAL WAY S, TUKWILA, WA 98108

## SEATTLE

Distribution Center



**Kevin Skillestad**

+1 206 715 0757

kevin.skillestad@kbcadvisors.com

**Matt Wood, SIOR**

+1 206 595 6814

matt.wood@kbcadvisors.com

**Hans Vieser**

+1 425 765 7926

hans.vieser@kbcadvisors.com

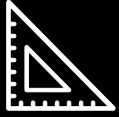


**GID**  
INDUSTRIAL

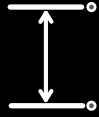
# Property Highlights

**SEATTLE**  
Distribution Center

6719 E MARGINAL WAY S, TUKWILA, WA 98108



**174,341 SF**  
TOTAL IN TWO BUILDINGS



**24' - 26'**  
CLEAR HEIGHT



**PARKING**  
ON-SITE



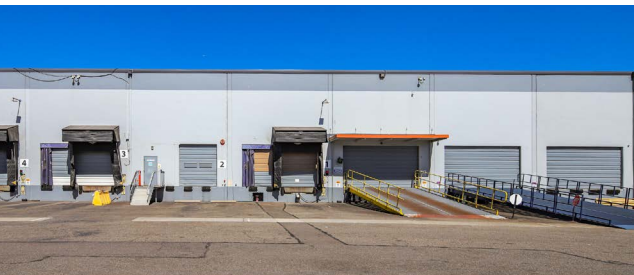
**BNSF RAIL**  
SERVED



**DOCK-HIGH**  
LOADING



**GRADE-LEVEL**  
LOADING



**Kevin Skillestad**  
+1 206 715 0757  
kevin.skillestad@kbcadvisors.com

**Matt Wood, SIOR**  
+1 206 595 6814  
matt.wood@kbcadvisors.com

**Hans Vieser**  
+1 425 765 7926  
hans.vieser@kbcadvisors.com



# Building A, Suite 6701

6719 E MARGINAL WAY S, TUKWILA, WA 98108

**SEATTLE**  
Distribution Center

**38,861 SF**

AVAILABLE

**5,481 SF**

OFFICE

**26'**

CLEAR HEIGHT

**10**

▲ DOCK-HIGH POSITIONS

**7**

● GRADE-LEVEL POSITIONS

**4**

RAIL POSITIONS

**HEAVY**

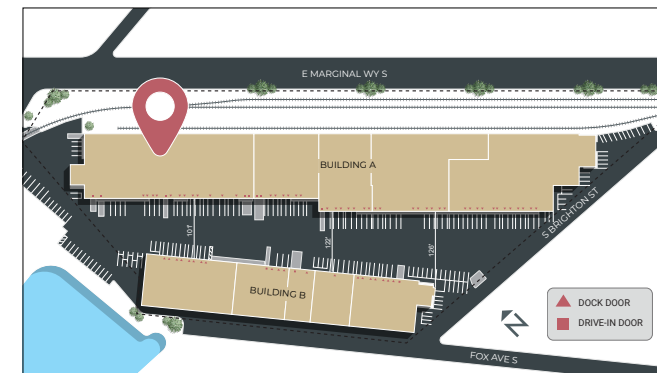
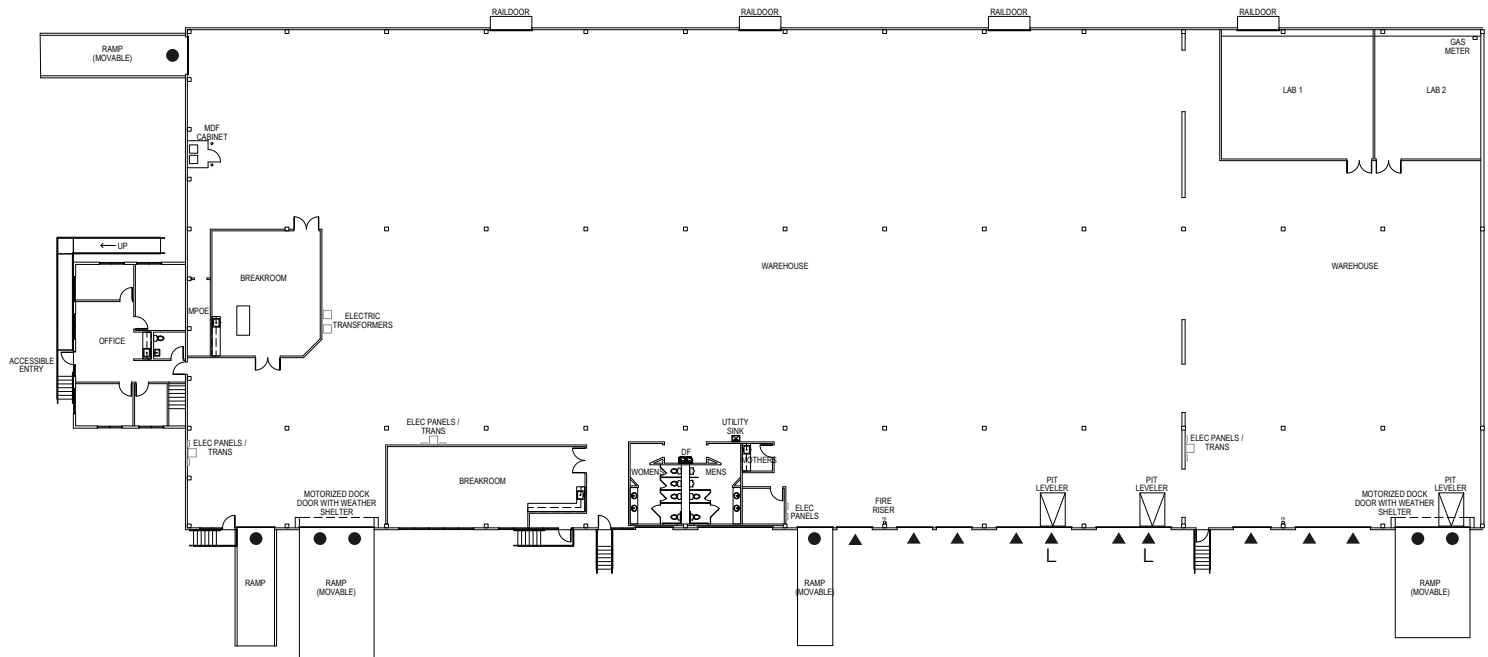
POWER

**FULLY**

INSULATED

**NOW**

AVAILABILITY



**Kevin Skillestad**

+1 206 715 0757

kevin.skillestad@kbcadvisors.com

**Matt Wood, SIOR**

+1 206 595 6814

matt.wood@kbcadvisors.com

**Hans Vieser**

+1 425 765 7926

hans.vieser@kbcadvisors.com



**GID**  
INDUSTRIAL

# Building A, Suite 6725

6719 E MARGINAL WAY S, TUKWILA, WA 98108

**SEATTLE**  
Distribution Center

**14,790 SF**

AVAILABLE

**367 SF**

OFFICE

**665 SF**

MEZZANINE

**26'**

CLEAR HEIGHT

**4**

▲ DOCK-HIGH POSITIONS

**1**

● GRADE-LEVEL POSITION

**1**

■ PONY-DOCK POSITION

**1**

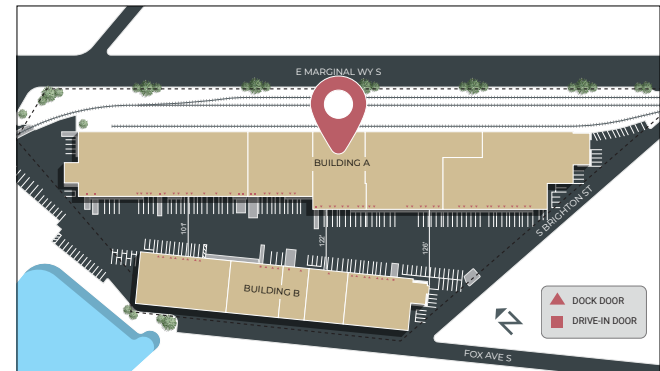
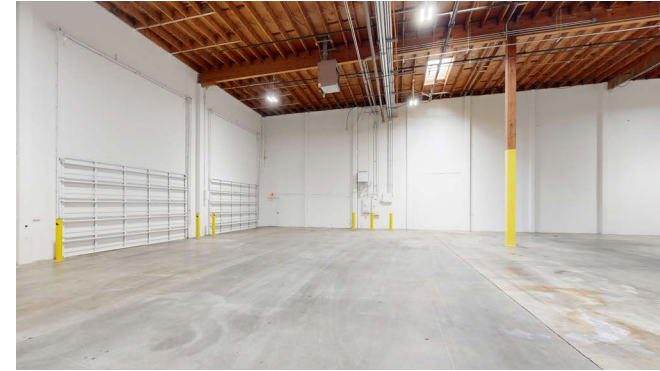
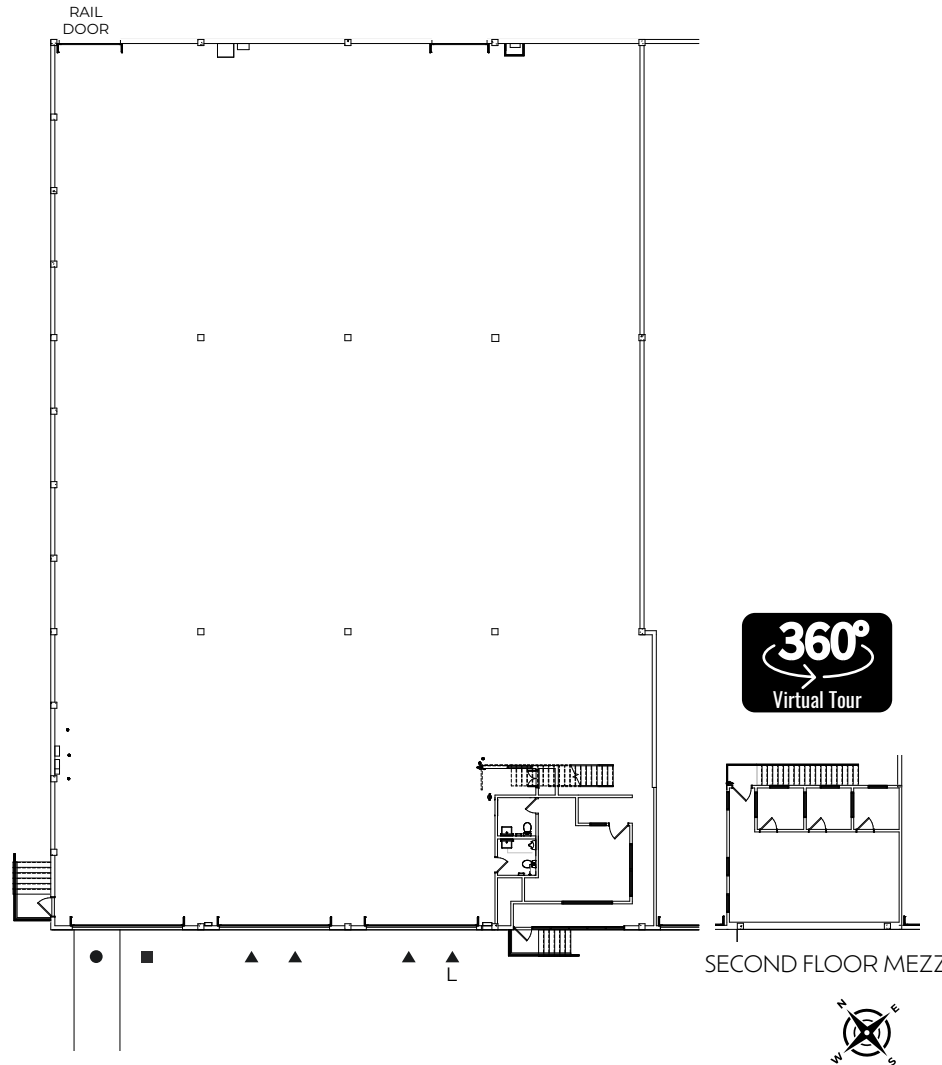
RAIL POSITION

**HEAVY**

POWER

**AVAILABLE**

NOW



**Kevin Skillestad**  
+1 206 715 0757  
kevin.skillestad@kbcadvisors.com

**Matt Wood, SIOR**  
+1 206 595 6814  
matt.wood@kbcadvisors.com

**Hans Vieser**  
+1 425 765 7926  
hans.vieser@kbcadvisors.com



**GID**  
INDUSTRIAL

# Building A, Suite 6729

6719 E MARGINAL WAY S, TUKWILA, WA 98108

**SEATTLE**  
Distribution Center

**25,060 SF**

AVAILABLE

**640 SF**

OFFICE

**741 SF**

MEZZANINE

**26'**

CLEAR HEIGHT

**7**

▲ DOCK-HIGH POSITIONS

**2**

■ PONY-DOCK POSITIONS

**1**

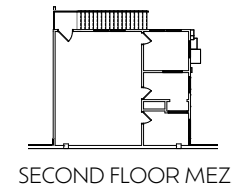
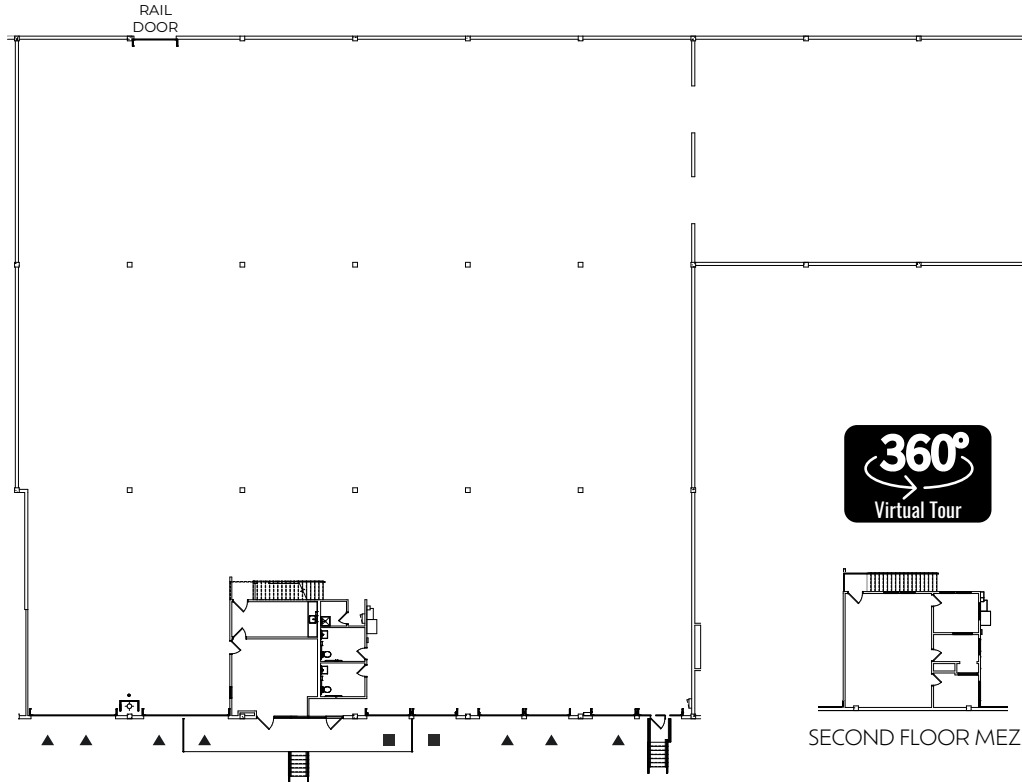
RAIL POSITION

**HEAVY**

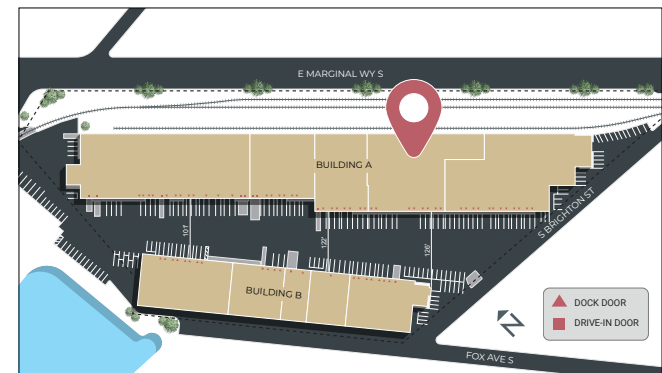
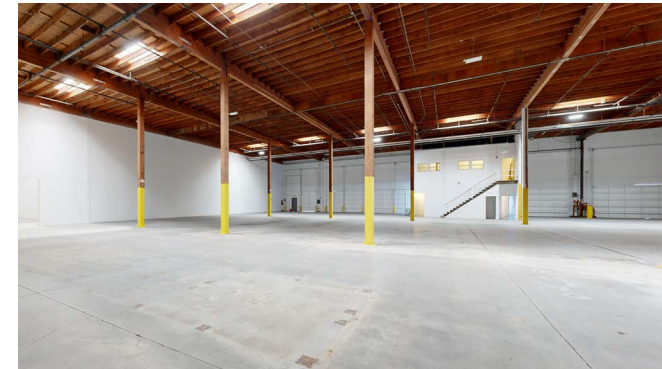
POWER

**AVAILABLE**

NOW



SECOND FLOOR MEZZ



**Kevin Skillestad**  
+1 206 715 0757  
kevin.skillestad@kbcadvisors.com

**Matt Wood, SIOR**  
+1 206 595 6814  
matt.wood@kbcadvisors.com

**Hans Vieser**  
+1 425 765 7926  
hans.vieser@kbcadvisors.com



# Building B, Suite 6755

6719 E MARGINAL WAY S, TUKWILA, WA 98108

**SEATTLE**  
Distribution Center

**16,257 SF**  
AVAILABLE

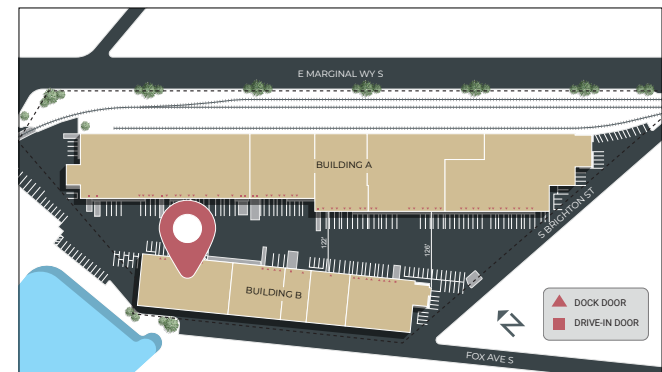
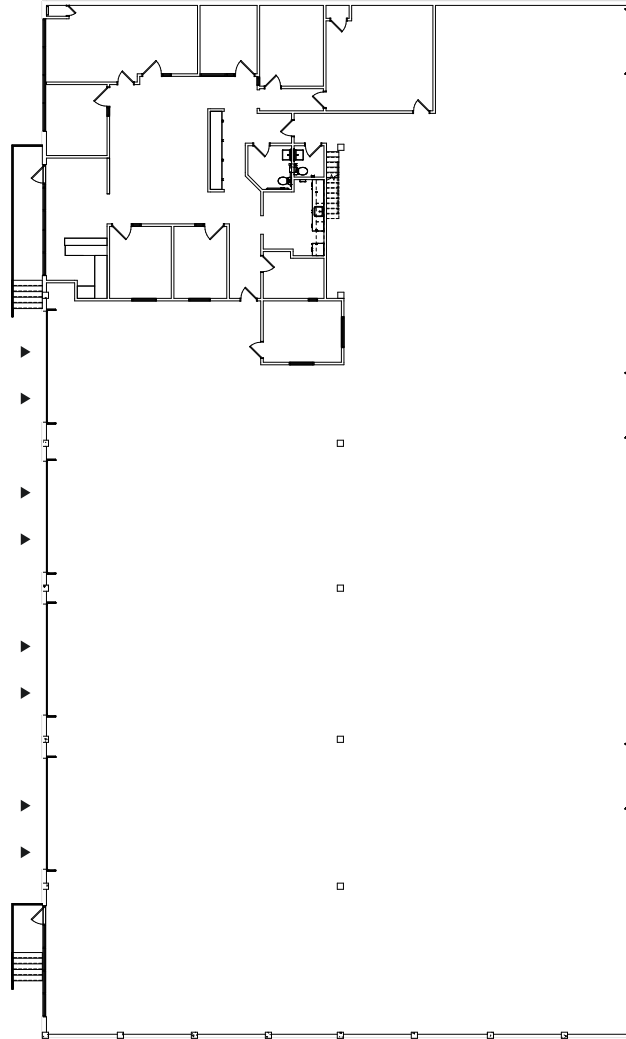
**2,686 SF**  
OFFICE

**24'**  
CLEAR HEIGHT

**8**  
▲ DOCK-HIGH POSITIONS

**HEAVY**  
POWER

**AVAILABLE**  
NOW



**Kevin Skillestad**  
+1 206 715 0757  
kevin.skillestad@kbcadvisors.com

**Matt Wood, SIOR**  
+1 206 595 6814  
matt.wood@kbcadvisors.com

**Hans Vieser**  
+1 425 765 7926  
hans.vieser@kbcadvisors.com



# Property Photos

6719 E MARGINAL WAY S, TUKWILA, WA 98108

# SEATTLE

Distribution Center



**Kevin Skillestad**  
+1 206 715 0757  
kevin.skillestad@kbcadvisors.com

**Matt Wood, SIOR**  
+1 206 595 6814  
matt.wood@kbcadvisors.com

**Hans Vieser**  
+1 425 765 7926  
hans.vieser@kbcadvisors.com



# Access & Location

6719 E MARGINAL WAY S, TUKWILA, WA 98108

# SEATTLE

Distribution Center



APPROXIMATELY ONE MILE TO BOEING FIELD AND LESS THAN 10 MILES TO SEATAC AIRPORT



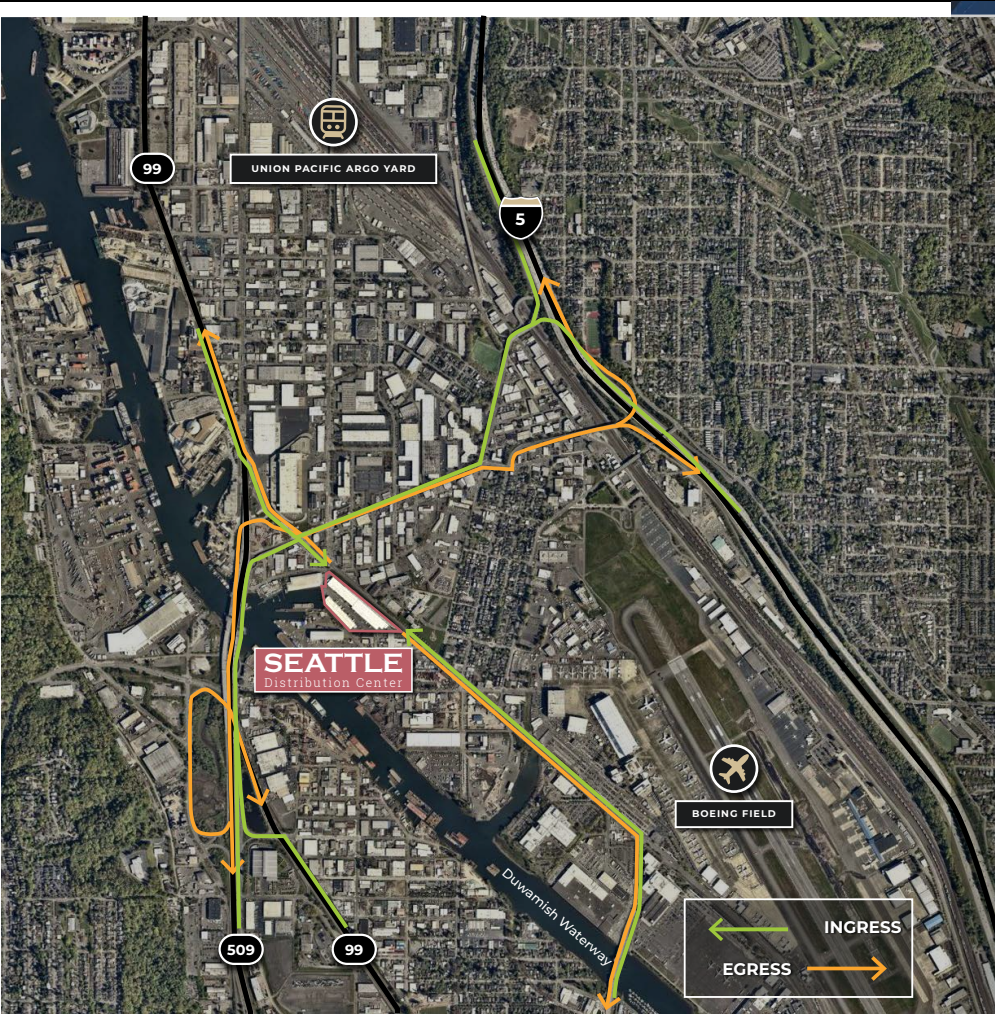
IMMEDIATE ACCESS TO THE BNSF RAILWAY



LESS THAN FOUR MILES TO THE PORT OF SEATTLE



EASY ACCESS TO I-5 AND HIGHWAY 99



**Kevin Skillestad**

+1 206 715 0757

kevin.skillestad@kbcadvisors.com

**Matt Wood, SIOR**

+1 206 595 6814

matt.wood@kbcadvisors.com

**Hans Wieser**

+1 425 765 7926

hans.wieser@kbcadvisors.com

