



FREMONT COMMERCE CENTER

41688 Christy Street, Fremont, CA 94538

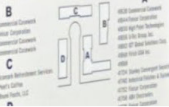
For Lease
11,608 SF

6% Procuring Fee

41638-41758
CHRISTY ST

FREMONT COMMERCE CENTER

41446 - 41786 Christy Street



4 Tickets for Super Bowl LX at Levi's Stadium**



PREMISES HIGHLIGHTS

- ±11,608 SF Office/R&D/Flex Space
- Corner Unit with 2 Labs
- Lab Space Features ESD Flooring & an ISO 7 Soft Wall Clean Room*
- Open Office Area & Private Offices
- Conference Room, Break Room & Restroom
- ±200 Amps @ 480/277 Volts Power*
- Landlord Open to Tenant Improvements
- Can be Combined with 41734 Christy Street for a Total of ±25,506 SF

LOCATION

Easy access to Interstate 880 and Highway 84/ Dumbarton Bridge. Walking distance to the Pacific Commons Shopping Center (retail, restaurants & other amenities).

USE

Office / R&D / Flex

AVAILABLE

Now

LEASE RATE

Call Broker for Rate

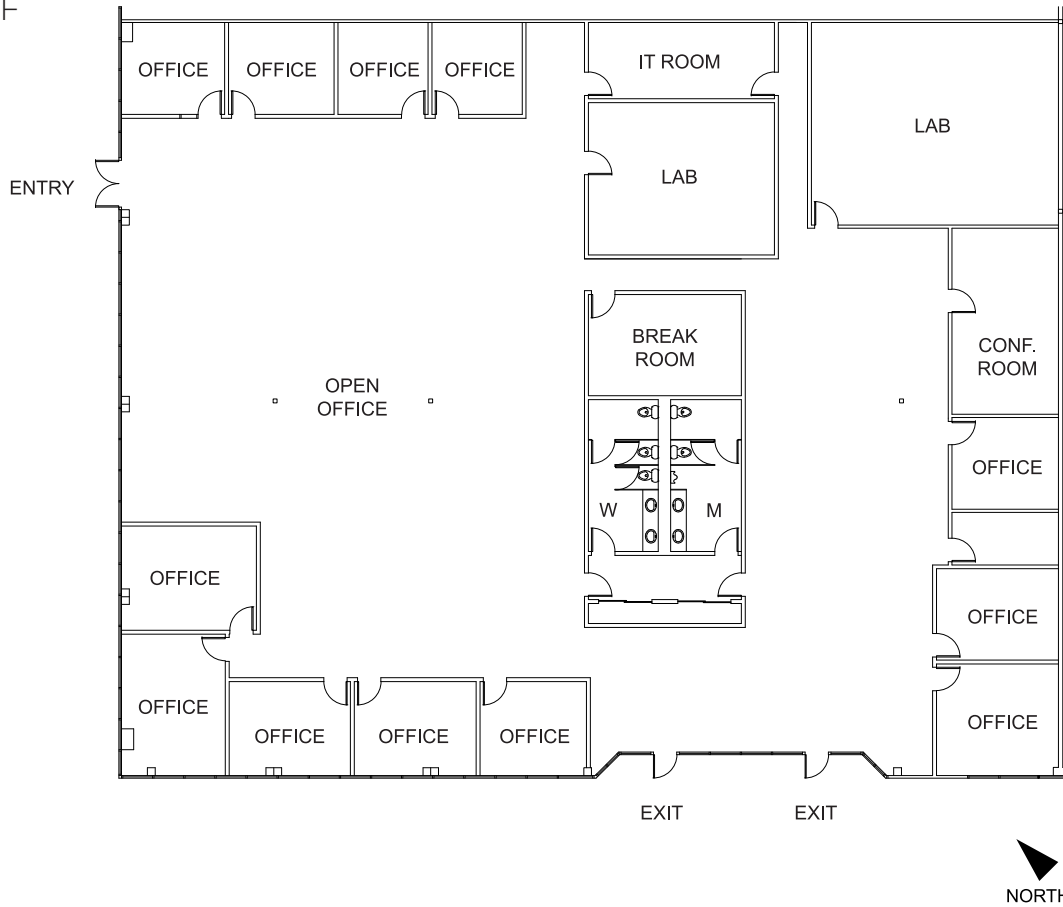
* Subject to verification



Big Enough To Serve You. Small Enough To Know You...



For Lease | 11,608 SF



CONTACT

Sam Higgins, SIOR

(415) 987-8798
 sam.higgins@kbcadvisors.com
 DRE License# 01329023

Tom Damaschino, SIOR

(510) 599-1189
 tom.damaschino@kbcadvisors.com
 DRE License# 01261227

Kevin Kennick

(925) 330-1601
 kevin.kennick@kbcadvisors.com
 DRE License# 02110600



© 2025 KBC ADVISORS. This information has been obtained from sources believed to be reliable but has not been verified for accuracy or completeness, and KBC Advisors disclaims any guarantees, warranties or representations, express or implied, as to the completeness or accuracy as to the information contained herein. You should conduct a careful, independent investigation of the property and verify all information. Any reliance on this information is solely at your own risk. The KBC ADVISORS logo is a service mark of KBC ADVISORS. All other marks displayed on this document are the property of their respective owners. Photos herein are the property of their respective owners. Use of these images without the express written consent of the owners is prohibited.