



## TUKWILA COMMERCE PARK

12606 INTERURBAN AVE S,  
BLDG B, SUITE 110-120, TUKWILA, WA

# FOR LEASE

## 7,118 SF

2,144 SF Office

12' Clear height

3 Drive-in doors

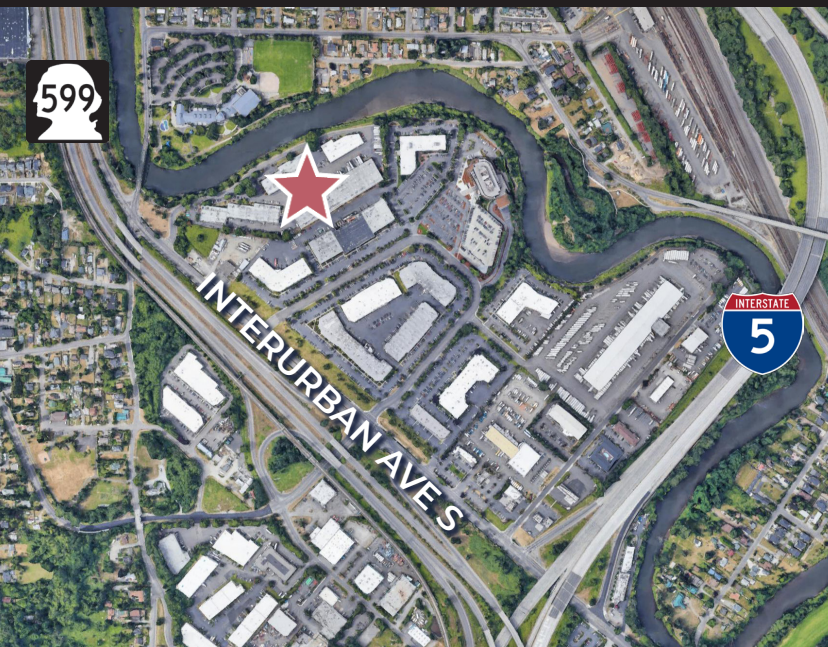
Available now

Call agent for rates

2026 Est. NNN \$0.42/SF

Excellent access to I-5 and SR-599

Adjacent to Tukwila Community Center  
and Interurban Trail



**MATT WOOD, SIOR**

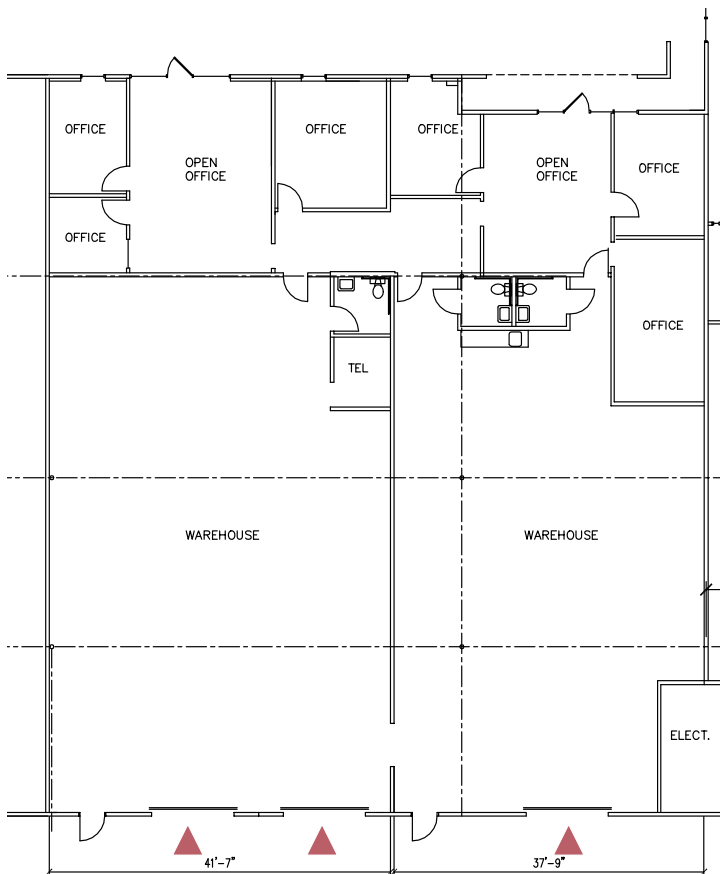
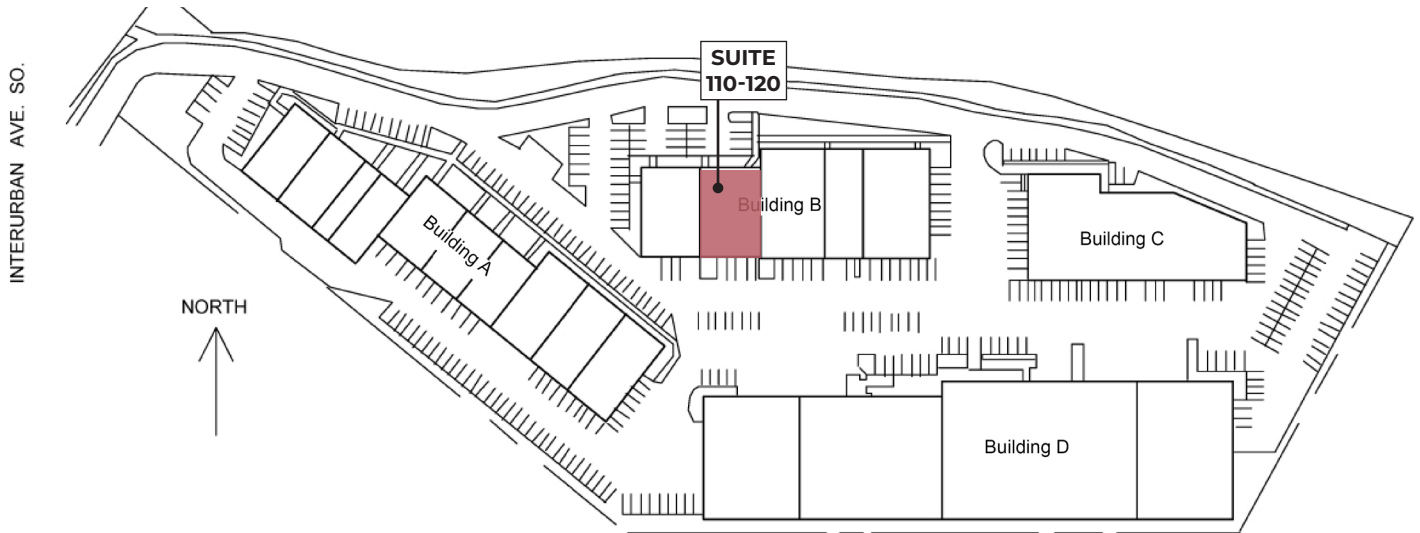
+1 206 595 6814

[matt.wood@kbcadvisors.com](mailto:matt.wood@kbcadvisors.com)

**JOHN BROOM**

+1 206 877 2750

[john.broom@kbcadvisors.com](mailto:john.broom@kbcadvisors.com)



## Space Information

- 7,118 SF Total
- 2,144 SF Office
- 12' Clear height
- 3 Drive-in doors
- Available now

 Grade-level door

**MATT WOOD, SIOR**  
 +1 206 595 6814  
 matt.wood@kbcadvisors.com

**JOHN BROOM**  
 +1 206 877 2750  
 john.broom@kbcadvisors.com