



FOR SUBLEASE THROUGH DECEMBER 31, 2030

17,057 Class A Warehouse

6242 S 196th Street, Kent, WA 98032

Matt Wood, SIOR

+1 206 595 6814

matt.wood@kbcadvisors.com

John Broom

+1 206 877 2750

john.broom@kbcadvisors.com

KBC Advisors | Seattle

5628 Airport Way, Suite 238

Seattle, WA 98108

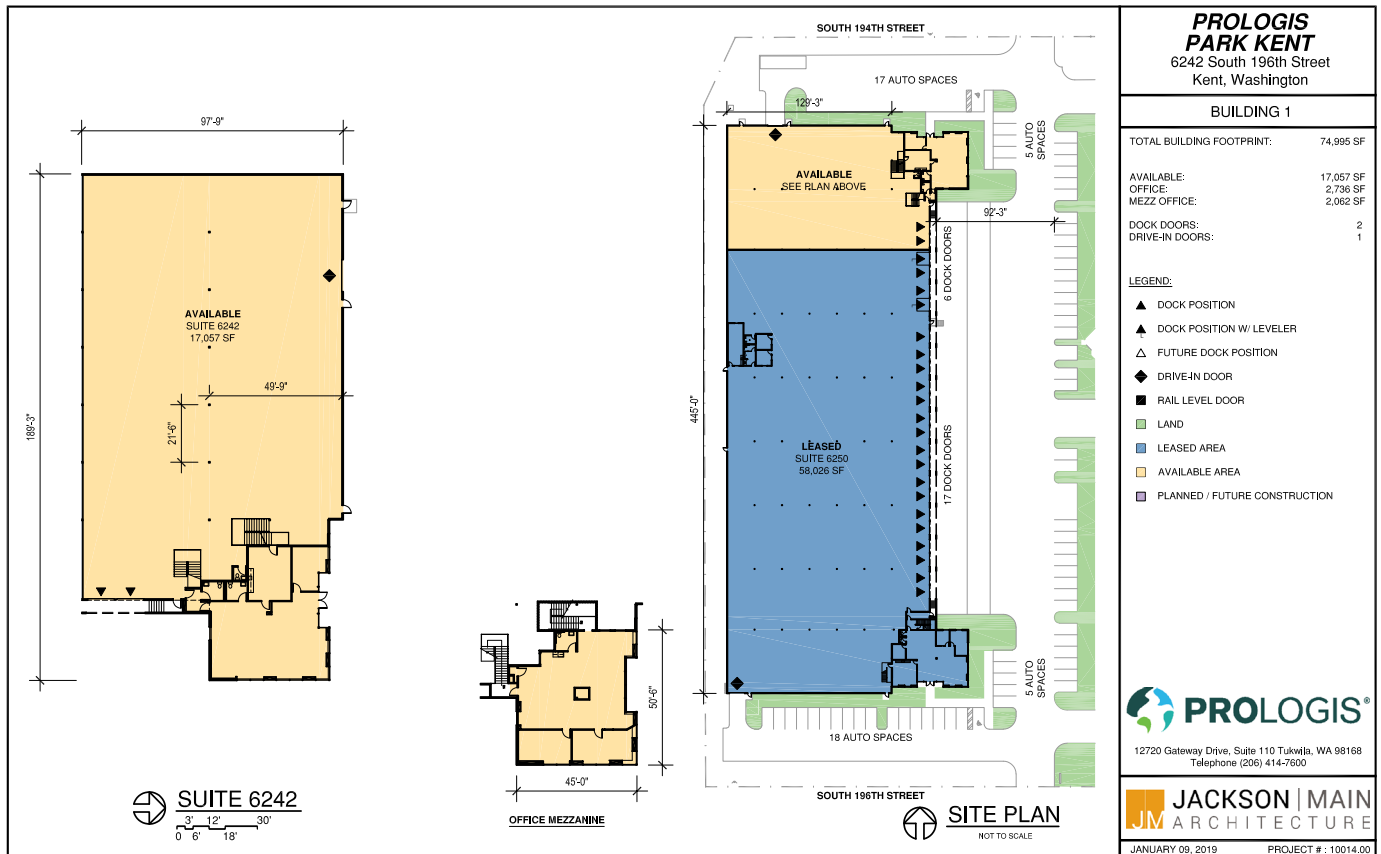
17,057
Square Feet

4,202
SF Office

2
Dock-high doors

1
Grade-level door

21'-24'
Clear Height



Matt Wood, SIOR
+1 206 595 6814
matt.wood@kbcadvisors.com

John Broom
+1 206 877 2750
john.broom@kbcadvisors.com

KBC Advisors | Seattle
5628 Airport Way, Suite 238
Seattle, WA 98108

© 2026 KBC ADVISORS This information has been obtained from sources believed to be reliable but has not been verified for accuracy or completeness, and KBC Advisors disclaims any guarantees, warranties or representations, express or implied, as to the completeness or accuracy as to the information contained herein. You should conduct a careful, independent investigation of the property and verify all information. Any reliance on this information is solely at your own risk. The KBC ADVISORS logo is a service mark of KBC ADVISORS. All other marks displayed on this document are the property of their respective owners. Photos herein are the property of their respective owners. Use of these images without the express written consent of the owners is prohibited.

