

FOR LEASE

1,500 – 10,000 SF Available for Lease

11190 Circle Drive, Austin, TX 78736



FOUR
FREESTANDING
FLEX BUILDINGS



FLEXIBLE SUITE
SIZES



HIGHWAY 290
FRONTAGE



PRIME LOCATION TO
SERVICE BOTH AUSTIN
AND DRIPPING SPRINGS



MONUMENT
SIGNAGE



DOCK HIGH AND GRADE
LEVEL LOADING

WILL BOST

+1 512 917 5850

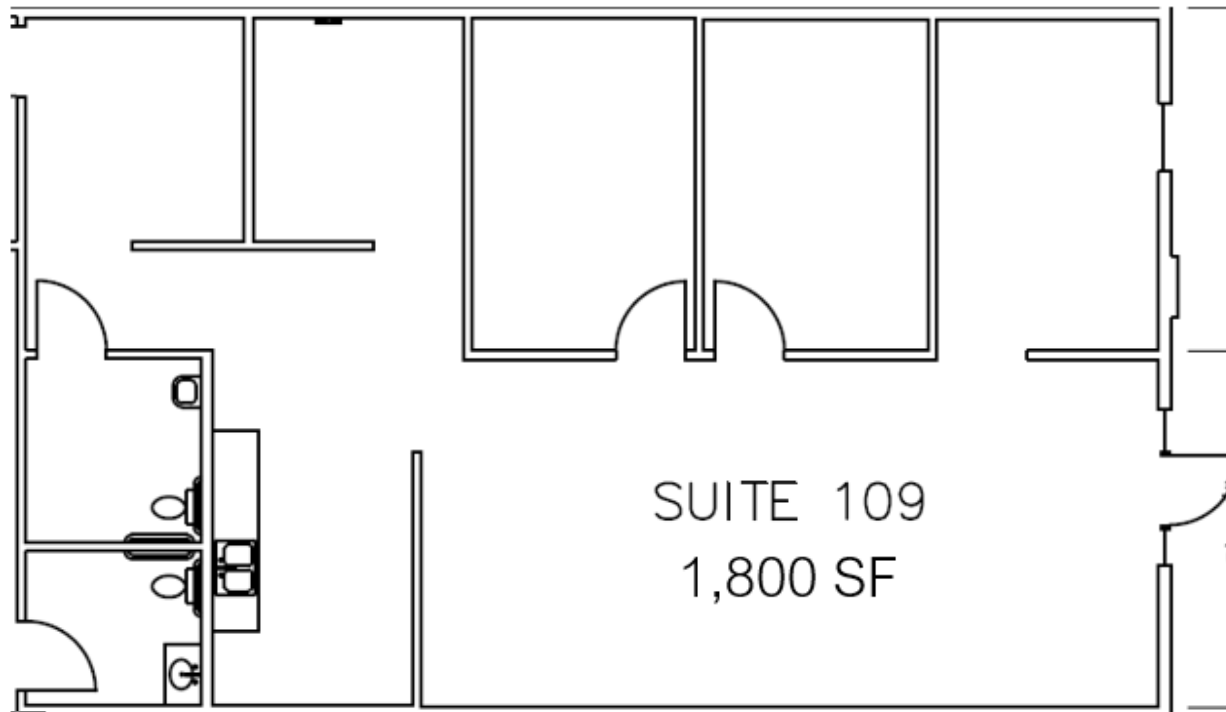
will.bost@kbcadvisors.com

KBC ADVISORS | AUSTIN

5000 Plaza on the Lake, Suite 225

Austin, TX 78746





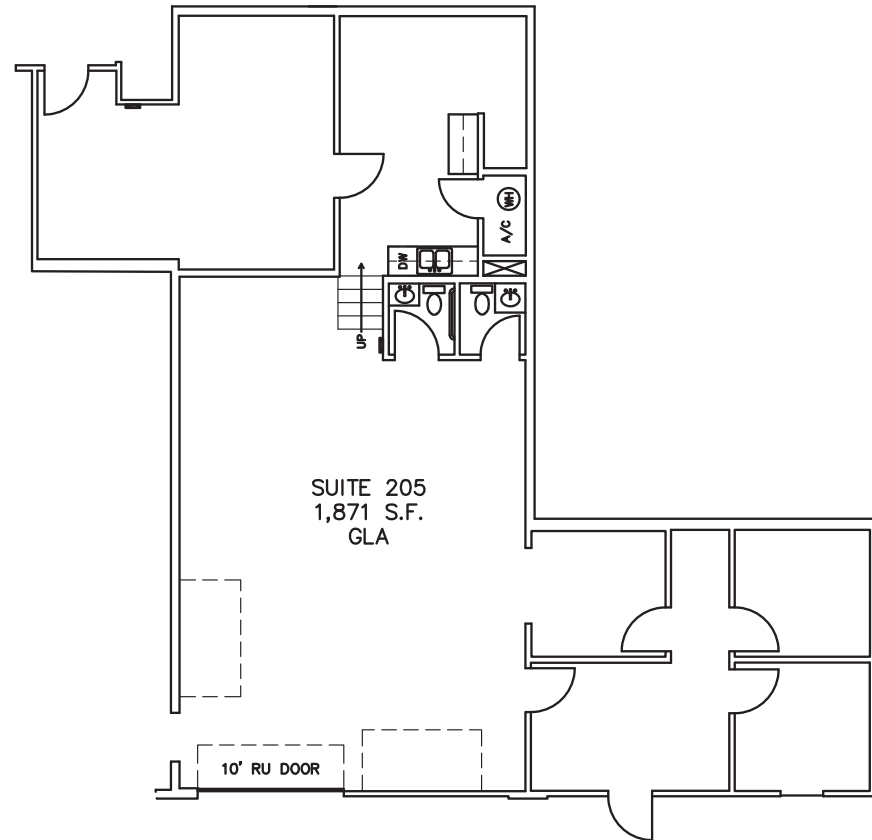
SUITE 109

1,800 SF

100% office

Hwy 290 visibility

Available now



SUITE 205

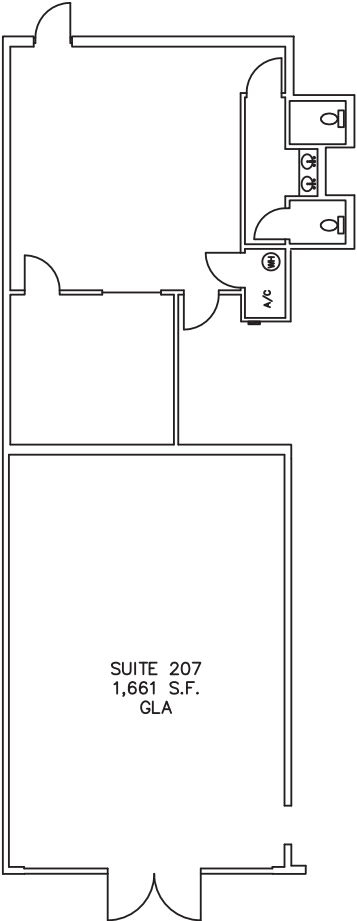
1,871 SF

50% office

1 Grade Level Door

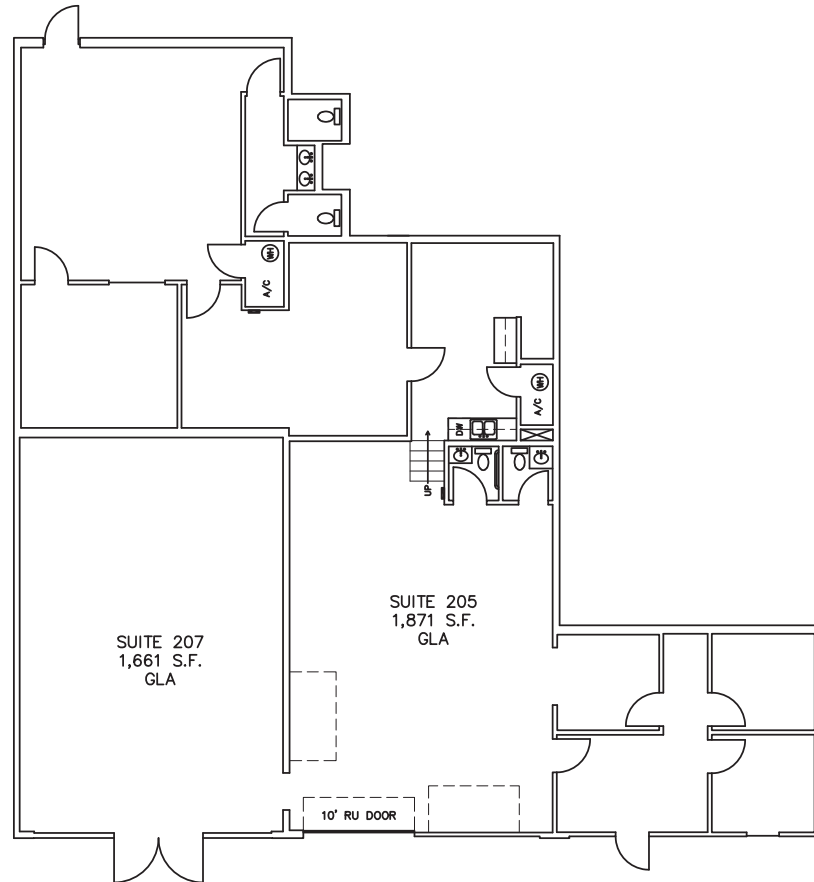
Available now

Suite - 207



SUITE 207

- 1,661 SF
- 45% office
- Hwy 290 visibility
- Available now



SUITE 205

1,871 SF

50% warehouse/50% office

1 grade level door

Available 1/1/25

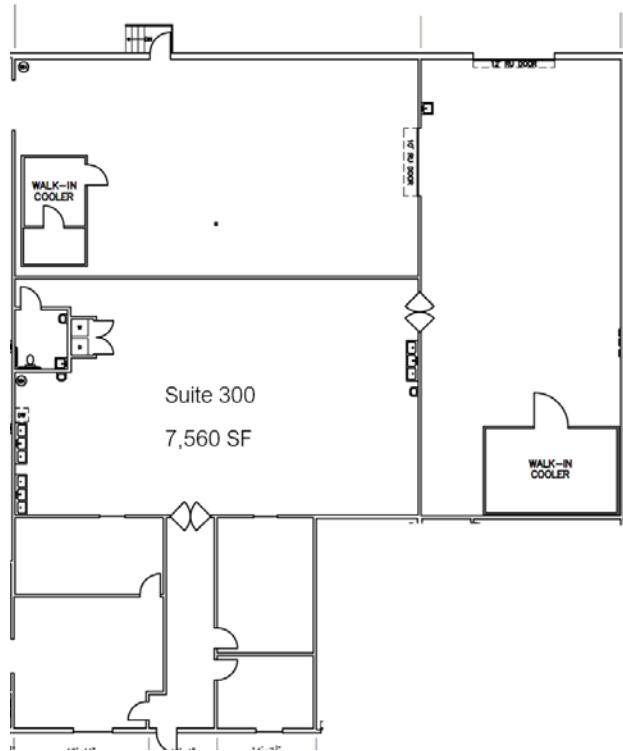
SUITE 207

1,661 SF

Office/production

100% HVAC

Available 1/1/25



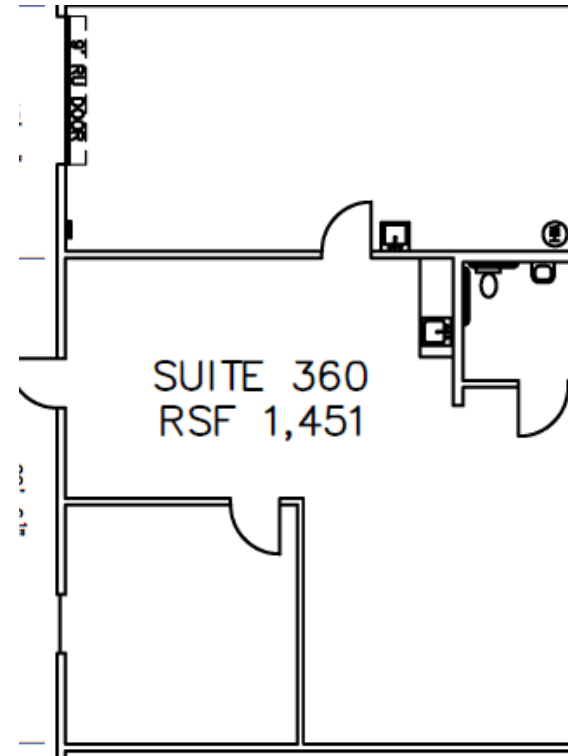
SUITE 300

7,560 SF

10% office / 30% commissary kitchen / 60% warehouse

1 grade level door

Available 1/1/25



SUITE 360

1,451 SF

80% warehouse/20% office

100% HVAC

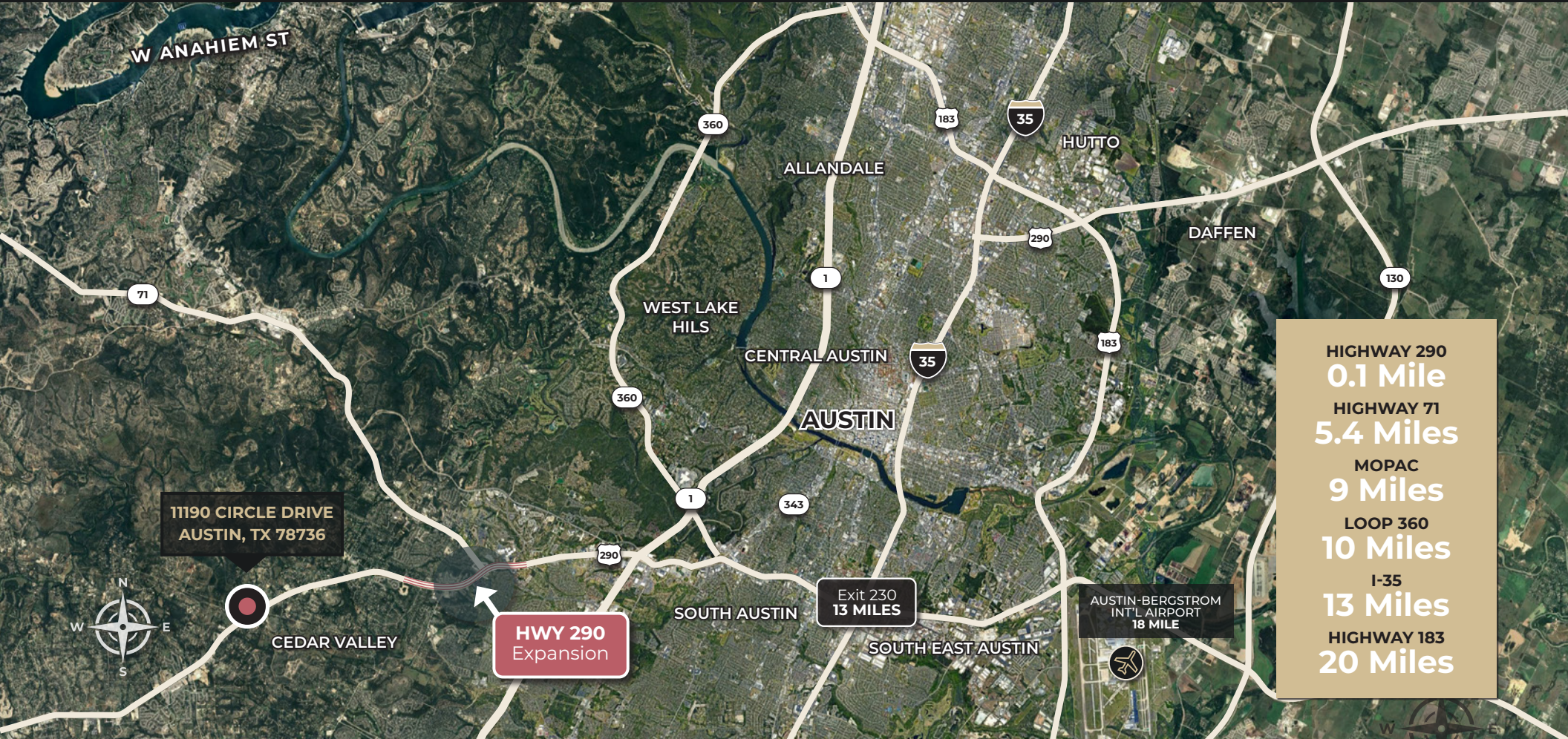
Available 1/1/25

11190 CIRCLE DRIVE, AUSTIN, TX

Property Photos



Immediate Access



WILL BOST

+1 512 917 5850

will.bost@kbcadvisors.com

KBC ADVISORS | AUSTIN

5000 Plaza on the Lake, Suite 225

Austin, TX 78746

© 2025 KBC ADVISORS This information has been obtained from sources believed to be reliable but has not been verified for accuracy or completeness, and KBC Advisors disclaims any guarantees, warranties or representations, express or implied, as to the completeness or accuracy as to the information contained herein. You should conduct a careful, independent investigation of the property and verify all information. Any reliance on this information is solely at your own risk. The KBC ADVISORS logo is a service mark of KBC ADVISORS. All other marks displayed on this document are the property of their respective owners. Photos herein are the property of their respective owners. Use of these images without the express written consent of the owners is prohibited.

