

# 64,000 SF

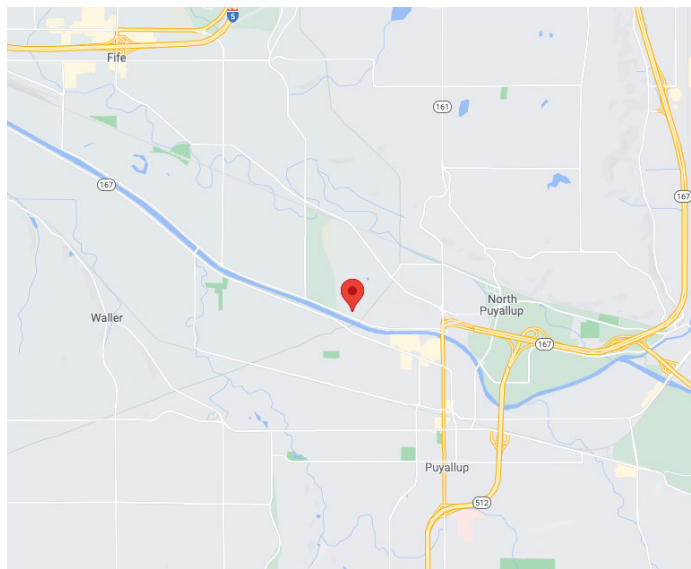
Industrial Space For Lease



## Prologis Park Puyallup 1



1601 Industrial Park Way  
Puyallup, WA 98371



### LOCATION

- Excellent access to Port of Tacoma, I-5 and Hwy-167
- In-park truck flow is excellent

### SUITE 104

- ±64,000 SF
- ±2,512 SF Office
- 15 DH doors; 1 GL doors
- Concrete truck apron
- 30' clear height
- 50' x 50' column spacing
- ESFR sprinkler system
- Ample employee car parks
- LED lighting
- Heavy Power
- Comcast fiber optic network
- Call for lease rate
- Available immediately

**Prologis Essentials: your single-source service for efficient move-in and operations at [prologisessentials.com](https://www.prologisessentials.com)**

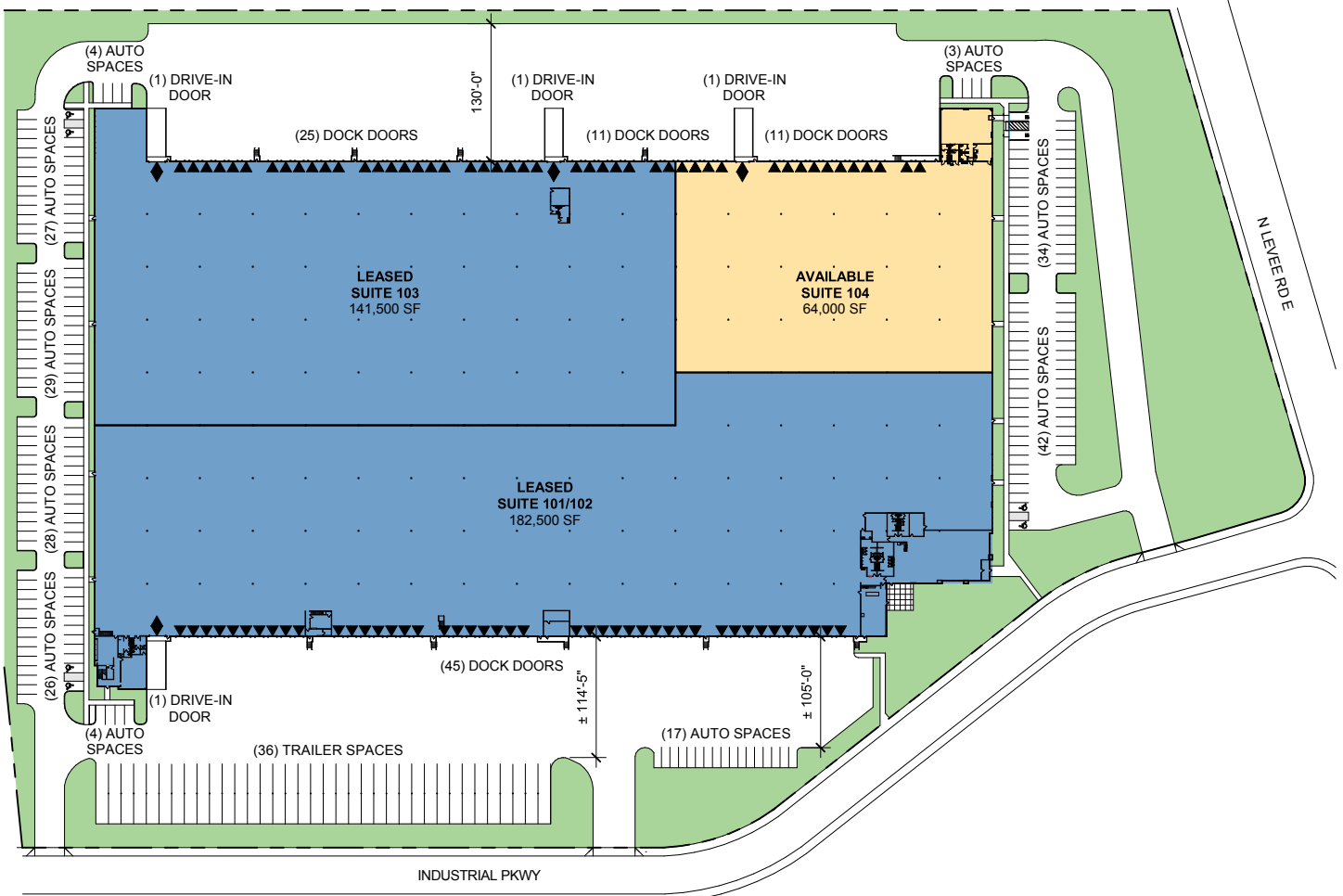
[www.prologis.com](https://www.prologis.com)

# 64,000 SF

Industrial Space For Lease



## Prologis Park Puyallup 1



**LEGEND:**

- ▲ DOCK DOOR
- ◆ DRIVE-IN DOOR
- RAIL-LEVEL DOOR
- AVAILABLE AREA
- LEASED AREA
- PLANNED
- LAND

**Neil Walter Company**

Scott Price  
sprice@neilwalter.com  
253 779 2419  
1940 East D St, Suite 100  
Tacoma, WA 98421

**Neil Walter Company**

Bruce Valentine  
bvalentine@neilwalter.com  
253 779 2400  
1940 East D St, Suite 100  
Tacoma, WA 98421

**KBC Advisors**

Michael Roy  
michael.roy@kbcadvisors.com  
206 940 7199  
5628 Airport Way S #238  
Seattle, WA 98108

**Prologis**

Rick Kolpa  
rkolpa@prologis.com  
206 414-7610  
33930 Weyerhaeuser Way South, Suite 100  
Federal Way, WA 98001

**Prologis Essentials: your single-source service for efficient move-in and operations at [prologisessentials.com](http://prologisessentials.com)**

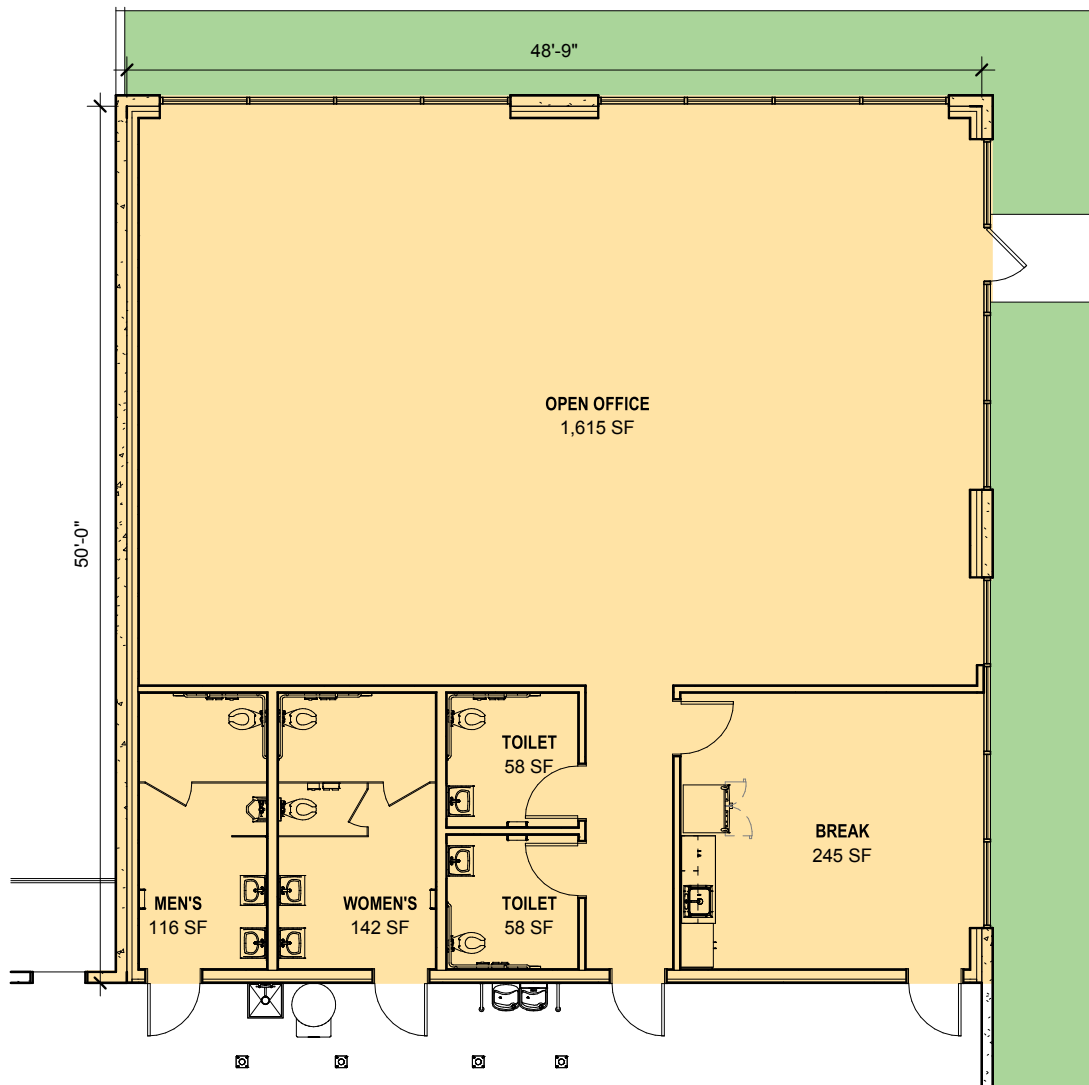
No warranty or representation, expressed or implied, is made as to the accuracy of the information contained herein, and same is submitted subject to error and omissions.

# 64,000 SF

Industrial Space For Lease



## Prologis Park Puyallup 1



### Neil Walter Company

Scott Price  
sprice@neilwalter.com  
253 779 2419  
1940 East D St, Suite 100  
Tacoma, WA 98421

### Neil Walter Company

Bruce Valentine  
bvalentine@neilwalter.com  
253 779 2400  
1940 East D St, Suite 100  
Tacoma, WA 98421

### KBC Advisors

Michael Roy  
michael.roy@kbcadvisors.com  
206 940 7199  
5628 Airport Way S #238  
Seattle, WA 98108

### Prologis

Rick Kolpa  
rkolpa@prologis.com  
206 414-7610  
33930 Weyerhaeuser Way South, Suite 100  
Federal Way, WA 98001