



FOR SALE OR LEASE

**±18 Acres of yard (useable)**

8531 East Marginal Way South, Tukwila, WA 98108

Casey Trees

+1 206 856 4381

casey.trees@kbcadvisors.com

Kevin Skillestad

+1 206 715 0757

kevin.skillestad@kbcadvisors.com

John Broom

+1 206 877 2750

john.broom@kbcadvisors.com

Hans Vieser

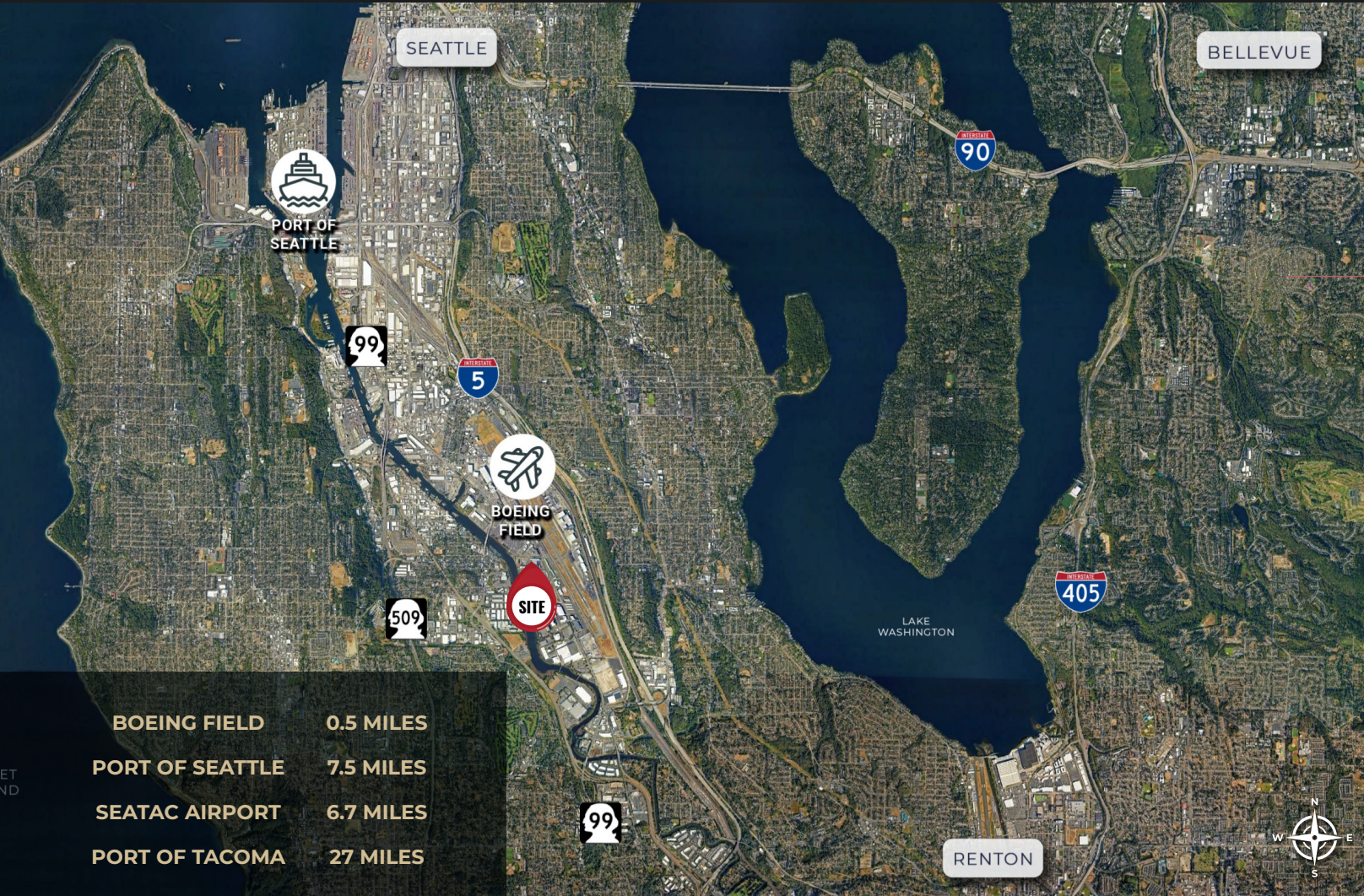
+1 425 765 7926

hans.vieser@kbcadvisors.com

KBC Advisors | Office

5628 Airport Way, Suite 238

Seattle, WA 98108



- BOEING FIELD**      0.5 MILES
- PORT OF SEATTLE**      7.5 MILES
- SEATAC AIRPORT**      6.7 MILES
- PORT OF TACOMA**      27 MILES

**MIC/H**  
Zoning

**FENCED**  
& Secured

**FLEXIBLE**  
Configuration

**SIGNALED**  
Intersection

**LARGEST IOS**  
Site available between  
Port of Seattle & Port of  
Tacoma

**AVAILABLE**  
Now

Casey Trees  
+1 206 856 4381  
casey.trees@kbcadvisors.com

Kevin Skillestad  
+1 206 715 0757  
kevin.skillestad@kbcadvisors.com

John Broom  
+1 206 877 2750  
john.broom@kbcadvisors.com

Hans Vieser  
+1 425 765 7926  
hans.vieser@kbcadvisors.com

KBC Advisors | Office  
5628 Airport Way, Suite 238  
Seattle, WA 98108

© 2026 KBC ADVISORS This information has been obtained from sources believed to be reliable but has not been verified for accuracy or completeness, and KBC Advisors disclaims any guarantees, warranties or representations, express or implied, as to the completeness or accuracy as to the information contained herein. You should conduct a careful, independent investigation of the property and verify all information. Any reliance on this information is solely at your own risk. The KBC ADVISORS logo is a service mark of KBC ADVISORS. All other marks displayed on this document are the property of their respective owners. Photos herein are the property of their respective owners. Use of these images without the express written consent of the owners is prohibited.

