

14,790 SF FOR LEASE

6725 E MARGINAL WAY S, TUKWILA, WA 98108

SEATTLE
Distribution Center



Kevin Skillestad

+1 206 715 0757

kevin.skillestad@kbcadvisors.com

Matt Wood, SIOR

+1 206 595 6814

matt.wood@kbcadvisors.com

Hans Vieser

+1 425 765 7926

hans.vieser@kbcadvisors.com



GID
INDUSTRIAL

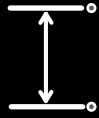
Property Highlights

SEATTLE
Distribution Center

6725 E MARGINAL WAY S, TUKWILA, WA 98108



174,341 SF
TOTAL IN TWO BUILDINGS



24' - 26'
CLEAR HEIGHT



PARKING
ON-SITE



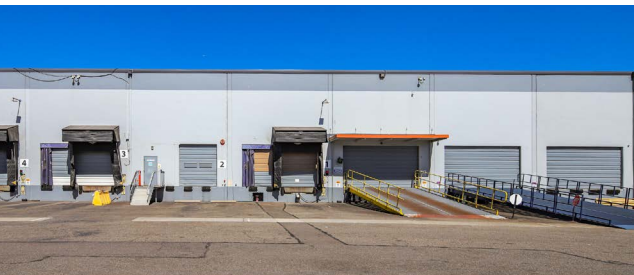
BNSF RAIL
SERVED



DOCK-HIGH
LOADING



GRADE-LEVEL
LOADING



Kevin Skillestad
+1 206 715 0757
kevin.skillestad@kbcadvisors.com

Matt Wood, SIOR
+1 206 595 6814
matt.wood@kbcadvisors.com

Hans Vieser
+1 425 765 7926
hans.vieser@kbcadvisors.com



Building A, Suite 6725

6725 E MARGINAL WAY S, TUKWILA, WA 98108

SEATTLE
Distribution Center

14,790 SF

AVAILABLE

367 SF

OFFICE

665 SF

MEZZANINE

26'

CLEAR HEIGHT

4

▲ DOCK-HIGH POSITIONS

1

● GRADE-LEVEL POSITION

1

■ PONY-DOCK POSITION

1

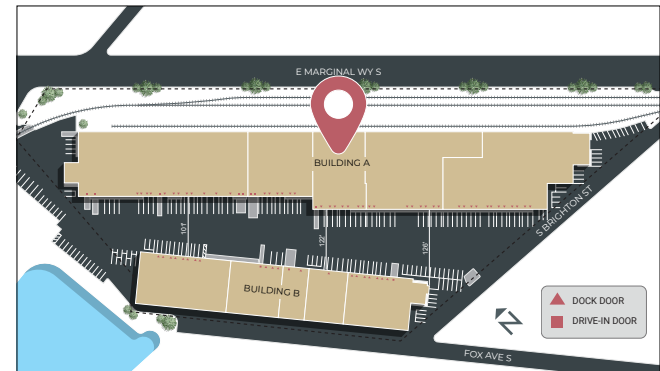
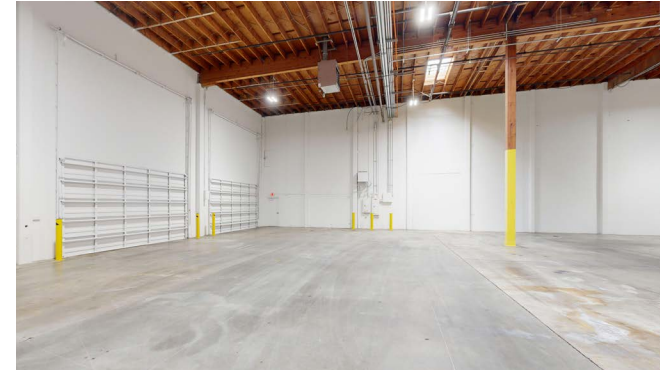
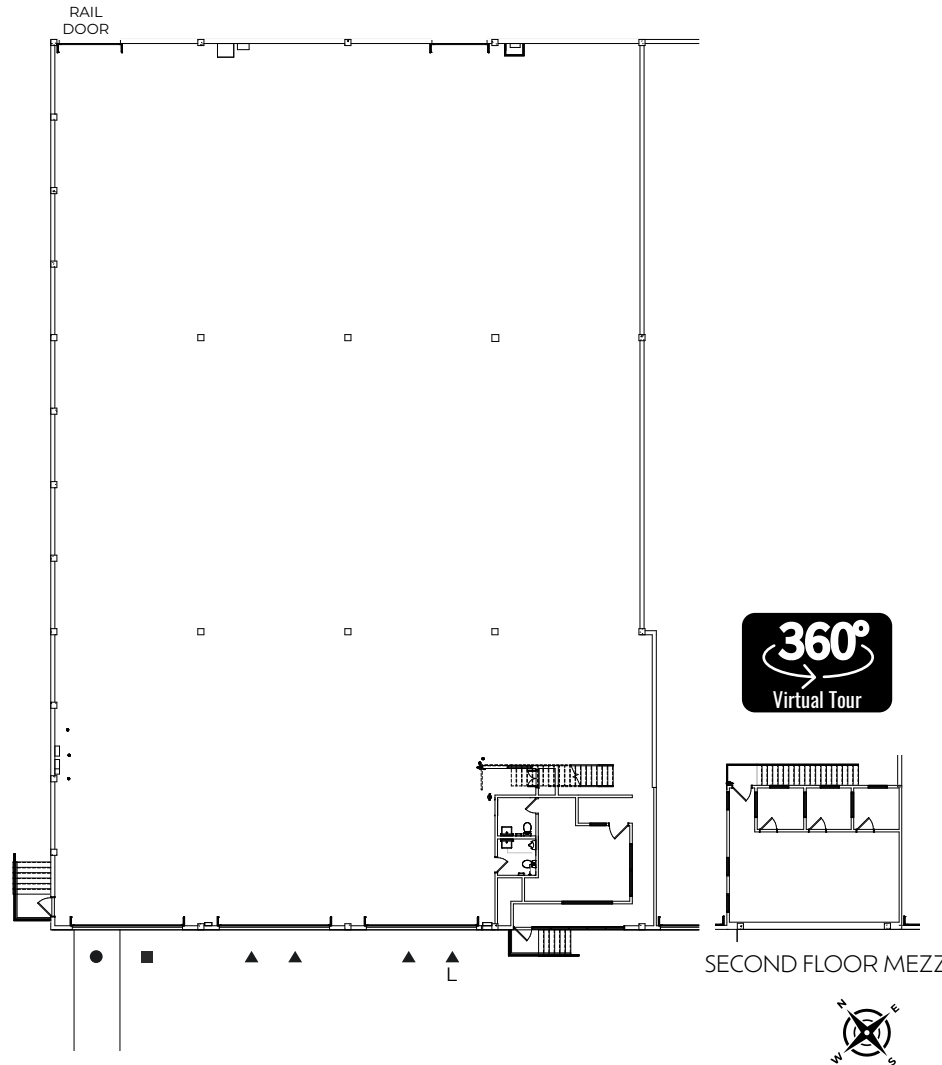
RAIL POSITION

HEAVY

POWER

AVAILABLE

NOW



Kevin Skillestad
+1 206 715 0757
kevin.skillestad@kbcadvisors.com

Matt Wood, SIOR
+1 206 595 6814
matt.wood@kbcadvisors.com

Hans Vieser
+1 425 765 7926
hans.vieser@kbcadvisors.com



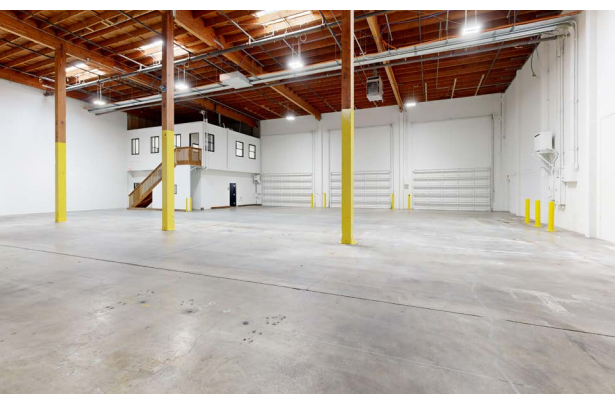
GID
INDUSTRIAL

Property Photos

6725 E MARGINAL WAY S, TUKWILA, WA 98108

SEATTLE

Distribution Center



Kevin Skillestad
+1 206 715 0757
kevin.skillestad@kbcadvisors.com

Matt Wood, SIOR
+1 206 595 6814
matt.wood@kbcadvisors.com

Hans Vieser
+1 425 765 7926
hans.vieser@kbcadvisors.com



Access & Location

6725 E MARGINAL WAY S, TUKWILA, WA 98108

SEATTLE

Distribution Center



APPROXIMATELY ONE MILE TO BOEING FIELD AND LESS THAN 10 MILES TO SEATAC AIRPORT



IMMEDIATE ACCESS TO THE BNSF RAILWAY



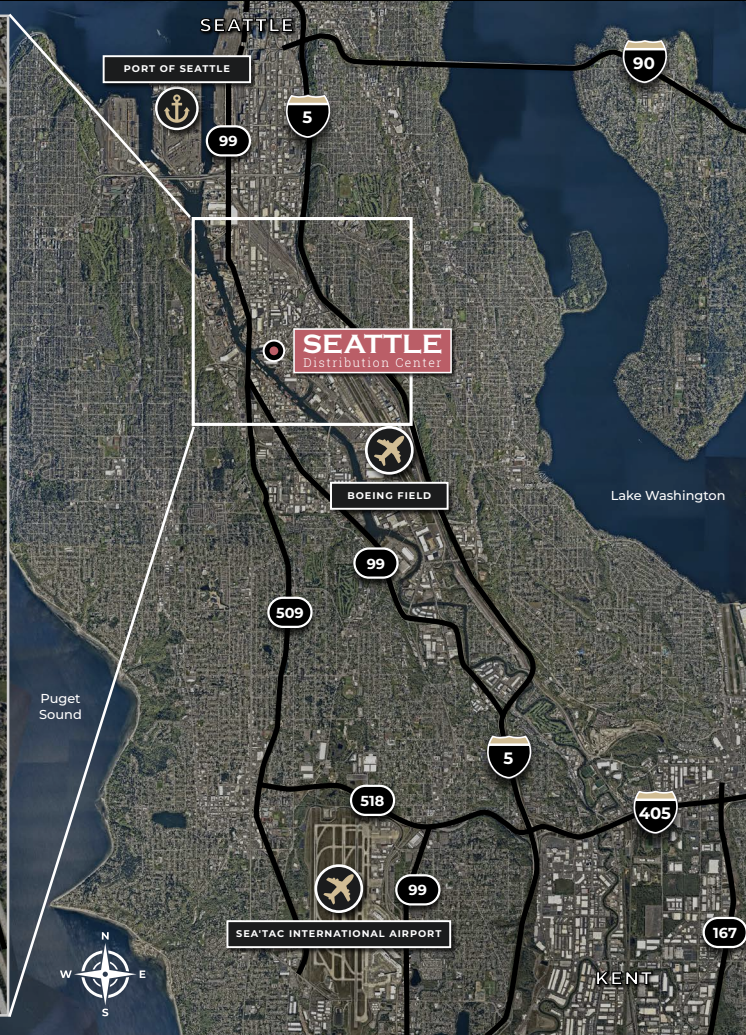
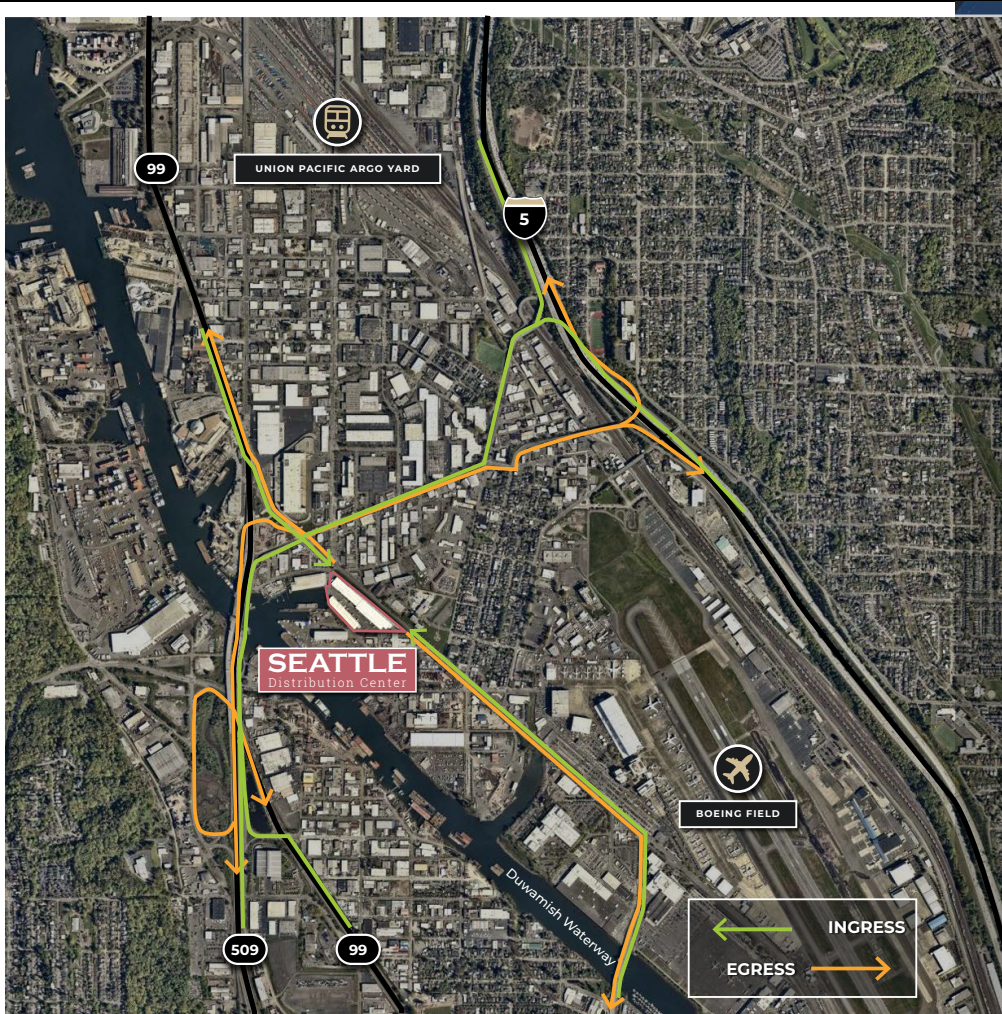
LESS THAN FOUR MILES TO THE PORT OF SEATTLE



EASY ACCESS TO I-5 AND HIGHWAY 99

GID

INDUSTRIAL



Kevin Skillestad
+1 206 715 0757
kevin.skillestad@kbcadvisors.com

Matt Wood, SIOR
+1 206 595 6814
matt.wood@kbcadvisors.com

Hans Wieser
+1 425 765 7926
hans.wieser@kbcadvisors.com

