



# C5LC AT I-35

## **BUILDING A**

1800 South I-35E, Lancaster, TX

**328,718 SF Available for Lease**

## **BUILDING B**

1830 South I-35E, Lancaster, TX

**276,874 SF Available for Lease**

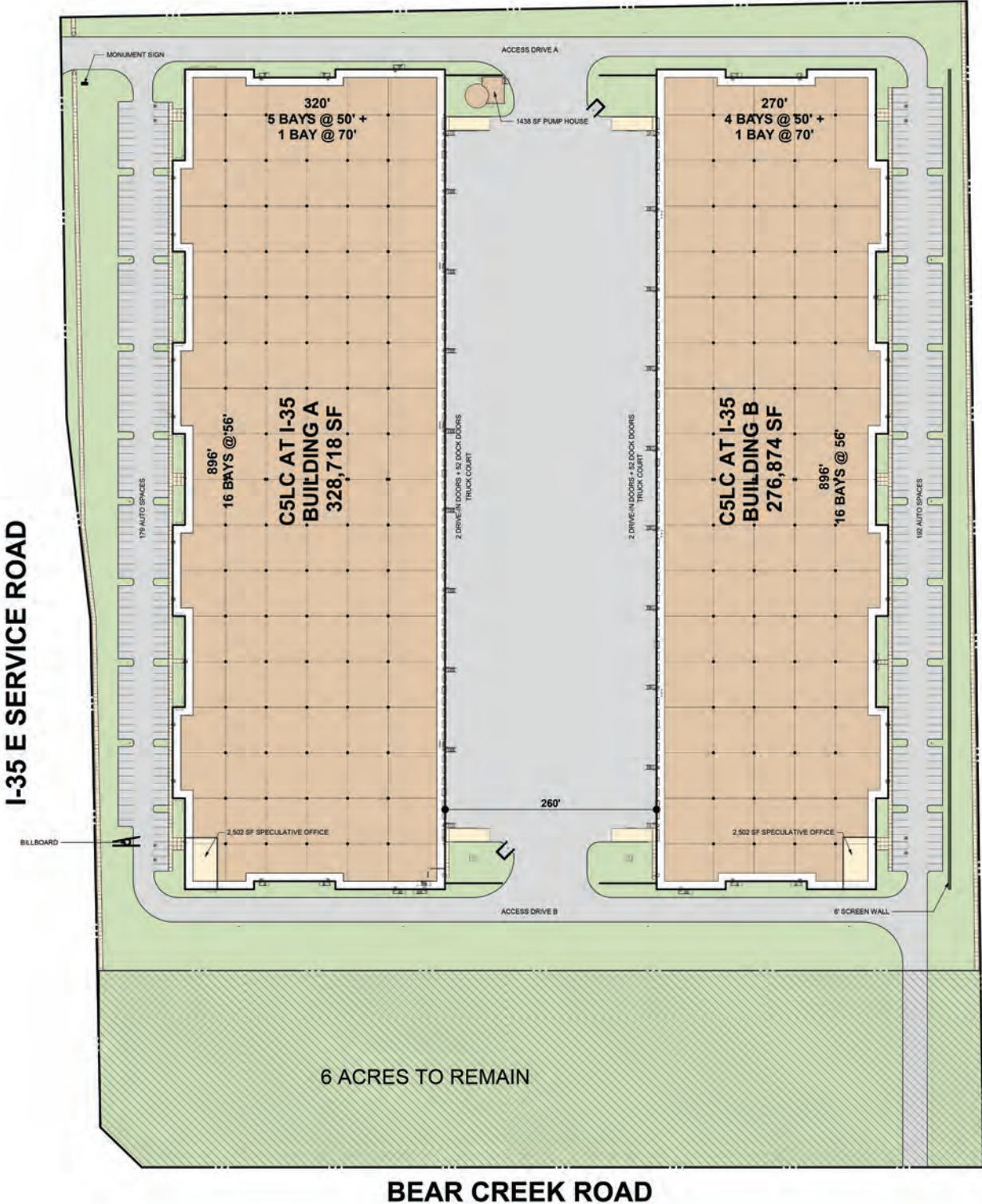


DEVELOPER

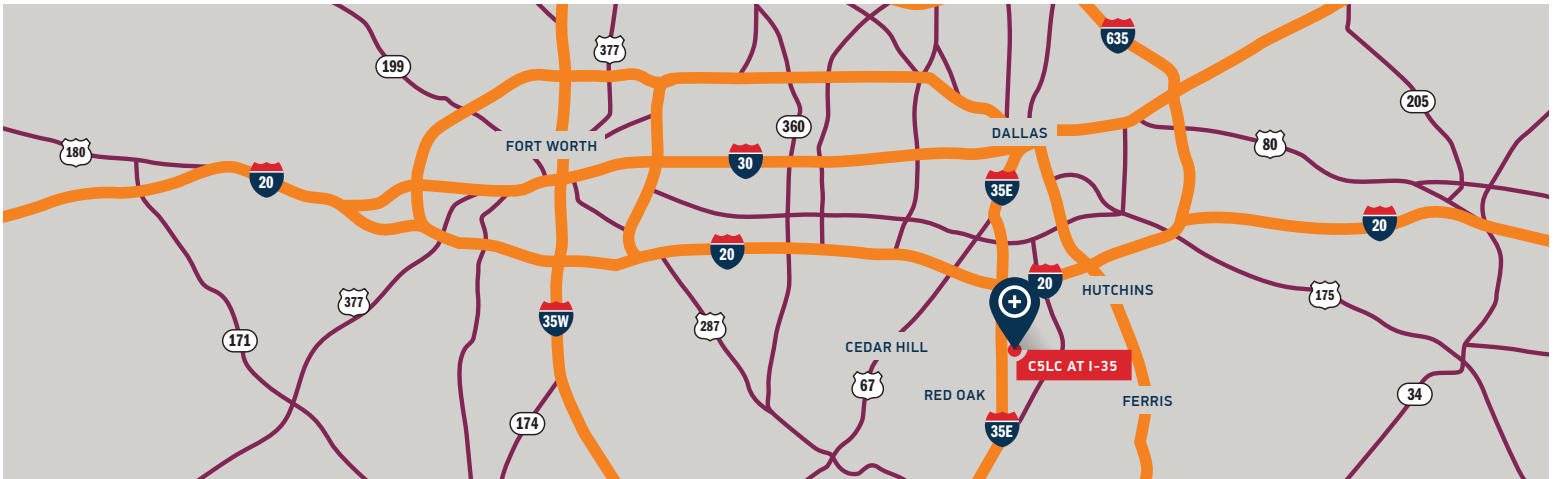
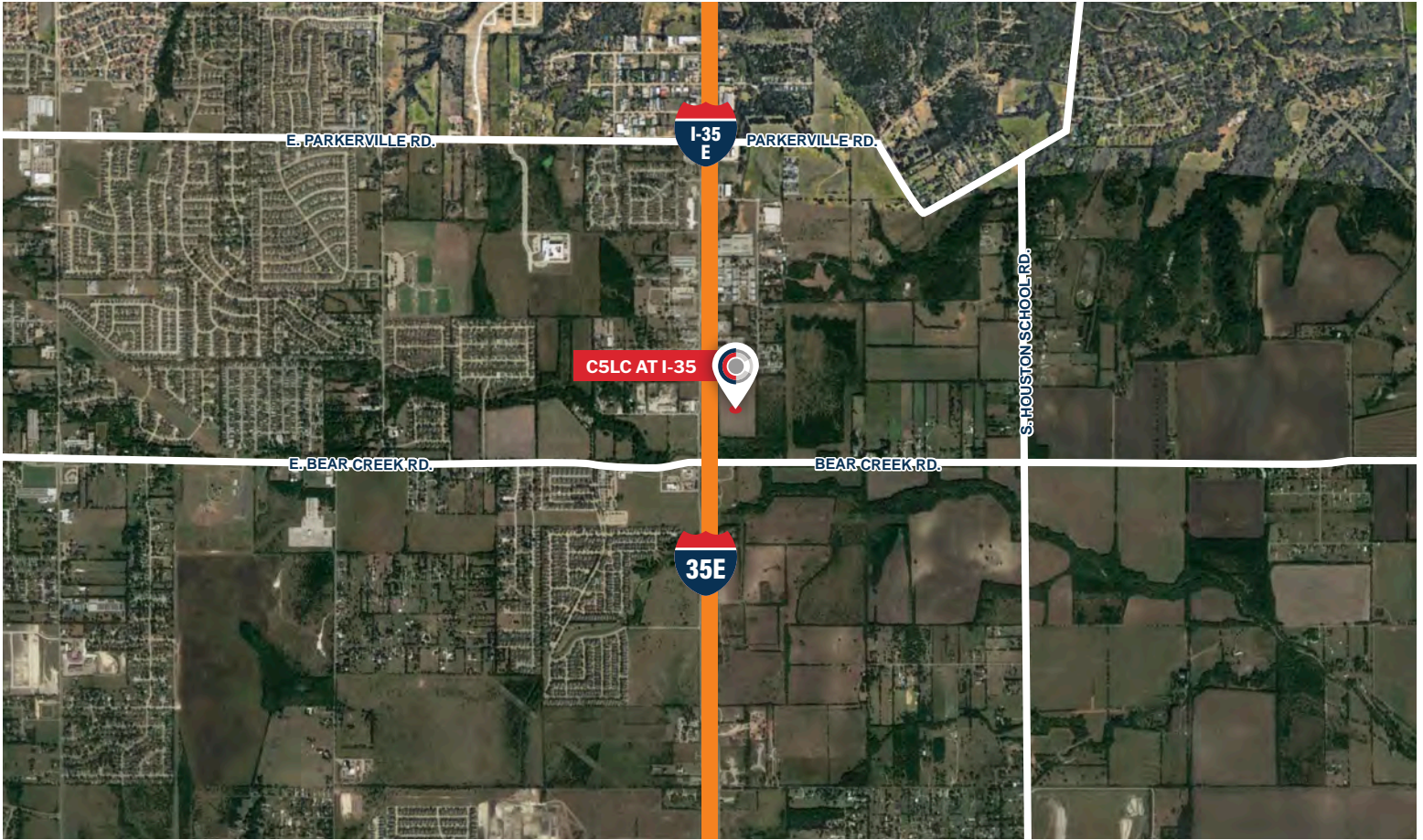


LEASING AGENT

# C5LC AT I-35







**John Leinbaugh**  
 Vice President Investments  
 O 972.362.8730  
[jleinbaugh@c5ip.com](mailto:jleinbaugh@c5ip.com)

**Liam Logan**  
 Director of Investments  
 O 972.362.8727  
[llogan@c5ip.com](mailto:llogan@c5ip.com)



**Nathan Lawrence**  
 O 214.402.6016  
[Nathan.lawrence@kbcadvisors.com](mailto:Nathan.lawrence@kbcadvisors.com)

**Krista Raymond**  
 O 972.971.2785  
[krista.raymond@kbcadvisors.com](mailto:krista.raymond@kbcadvisors.com)