



TUKWILA COMMERCE PARK

12606 INTERURBAN AVE S,
BLDG A, SUITE 140, TUKWILA, WA

FOR LEASE

3,975 SF

1,002 SF Office

12' Clear height

2 Drive-in doors

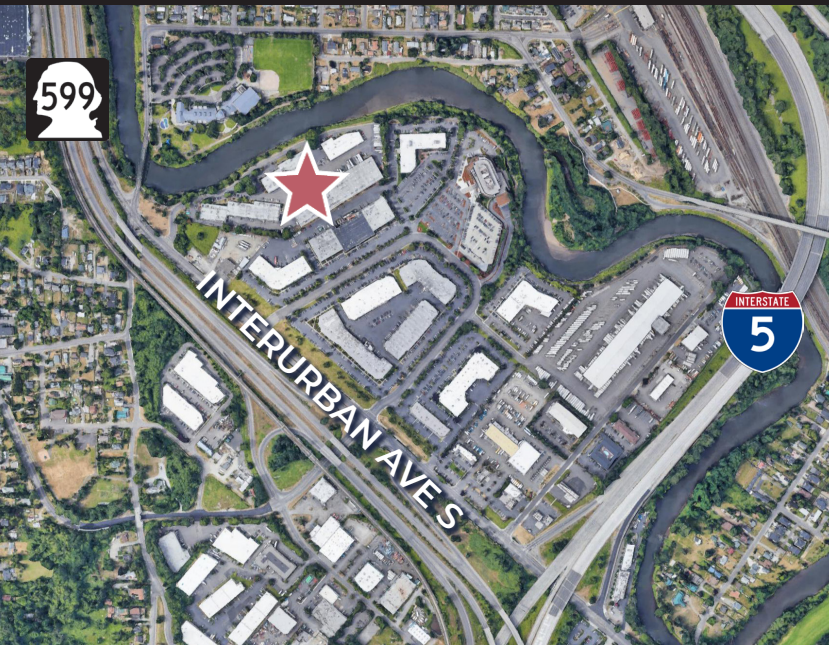
Available Now

Call agent for rates

2025 Est. NNN \$0.365/SF

Excellent access to I-5 and SR-599

Adjacent to Tukwila Community Center
and Interurban Trail



MATT WOOD, SIOR

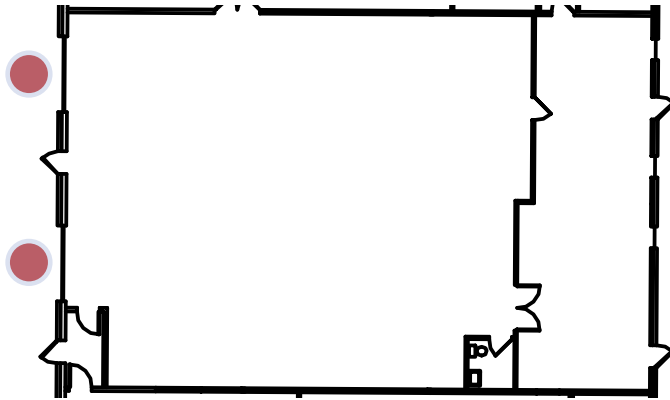
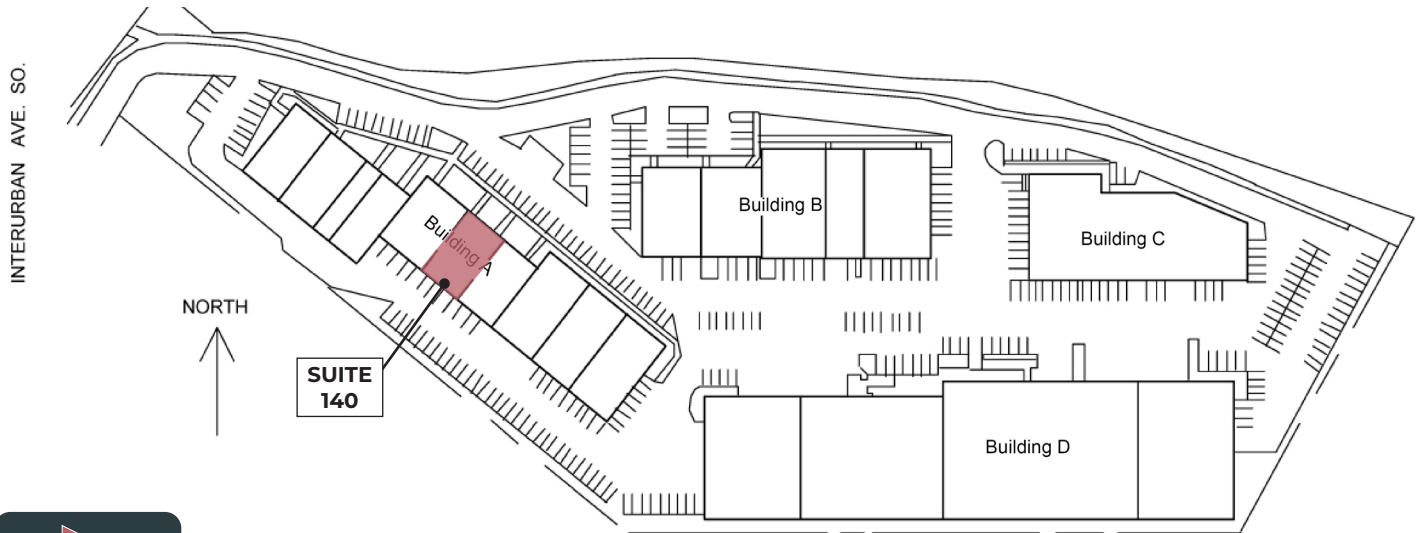
+1 206 595 6814

matt.wood@kbcadvisors.com

JOHN BROOM

+1 206 877 2750

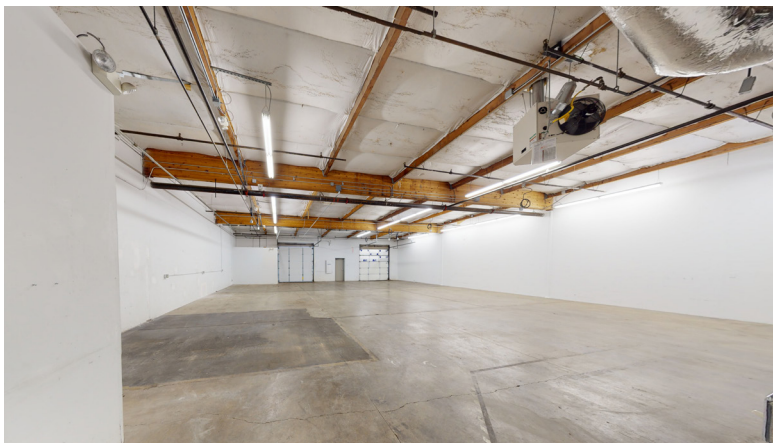
john.broom@kbcadvisors.com



 drive-in door

Space Information

- 3,975 SF Total
- 1,002 SF Office
- 12' Clear height
- 2 Drive-in doors
- Available Now



MATT WOOD, SIOR
+1 206 595 6814
matt.wood@kbcadvisors.com

JOHN BROOM
+1 206 877 2750
john.broom@kbcadvisors.com