

# 16,257 SF FOR LEASE

6755 E MARGINAL WAY S, TUKWILA, WA 98108

**SEATTLE**  
Distribution Center



**Kevin Skillestad**

+1 206 715 0757

kevin.skillestad@kbcadvisors.com

**Matt Wood, SIOR**

+1 206 595 6814

matt.wood@kbcadvisors.com

**Hans Vieser**

+1 425 765 7926

hans.vieser@kbcadvisors.com

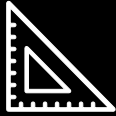


**GID**  
INDUSTRIAL

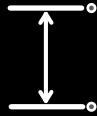
# Property Highlights

**SEATTLE**  
Distribution Center

6755 E MARGINAL WAY S, TUKWILA, WA 98108



**174,341 SF**  
TOTAL IN TWO BUILDINGS



**24' - 26'**  
CLEAR HEIGHT



**PARKING**  
ON-SITE



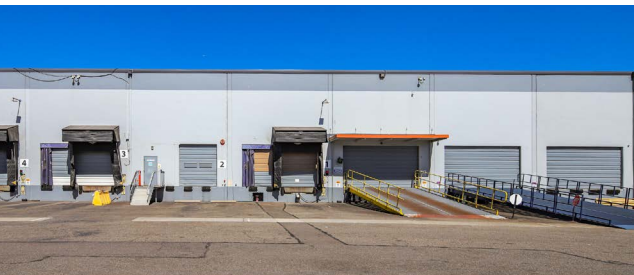
**BNSF RAIL**  
SERVED



**DOCK-HIGH**  
LOADING



**GRADE-LEVEL**  
LOADING



**Kevin Skillestad**  
+1 206 715 0757  
kevin.skillestad@kbcadvisors.com

**Matt Wood, SIOR**  
+1 206 595 6814  
matt.wood@kbcadvisors.com

**Hans Vieser**  
+1 425 765 7926  
hans.vieser@kbcadvisors.com



# Building B, Suite 6755

6755 E MARGINAL WAY S, TUKWILA, WA 98108

**SEATTLE**  
Distribution Center

**16,257 SF**

AVAILABLE

**2,686 SF**

OFFICE

**24'**

CLEAR HEIGHT

**8**

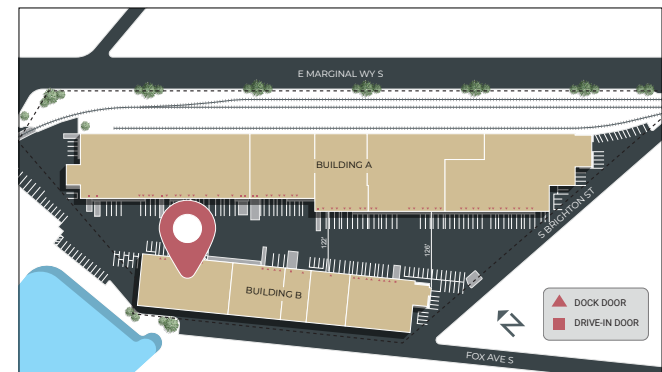
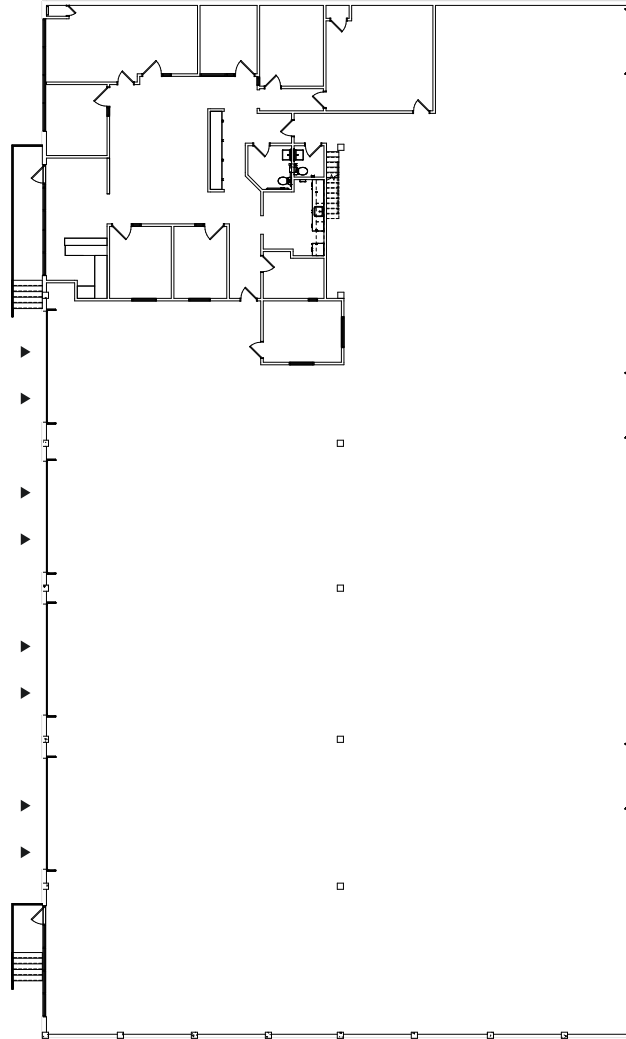
▲ DOCK-HIGH POSITIONS

**HEAVY**

POWER

**AVAILABLE**

NOW



**Kevin Skillestad**  
+1 206 715 0757  
kevin.skillestad@kbcadvisors.com

**Matt Wood, SIOR**  
+1 206 595 6814  
matt.wood@kbcadvisors.com

**Hans Vieser**  
+1 425 765 7926  
hans.vieser@kbcadvisors.com

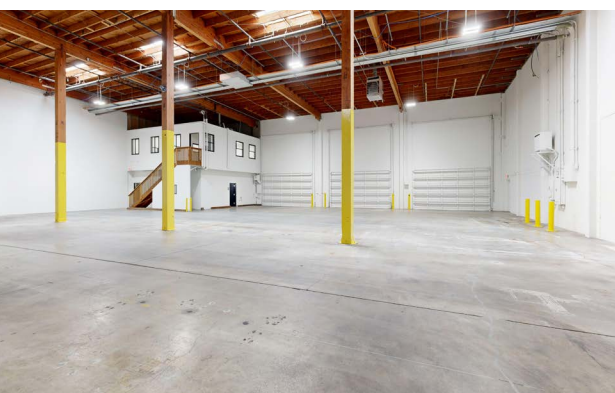


# Property Photos

6755 E MARGINAL WAY S, TUKWILA, WA 98108

# SEATTLE

Distribution Center



**Kevin Skillestad**  
+1 206 715 0757  
kevin.skillestad@kbcadvisors.com

**Matt Wood, SIOR**  
+1 206 595 6814  
matt.wood@kbcadvisors.com

**Hans Vieser**  
+1 425 765 7926  
hans.vieser@kbcadvisors.com



# Access & Location

6755 E MARGINAL WAY S, TUKWILA, WA 98108

# SEATTLE

Distribution Center



APPROXIMATELY ONE MILE TO BOEING FIELD AND LESS THAN 10 MILES TO SEATAC AIRPORT



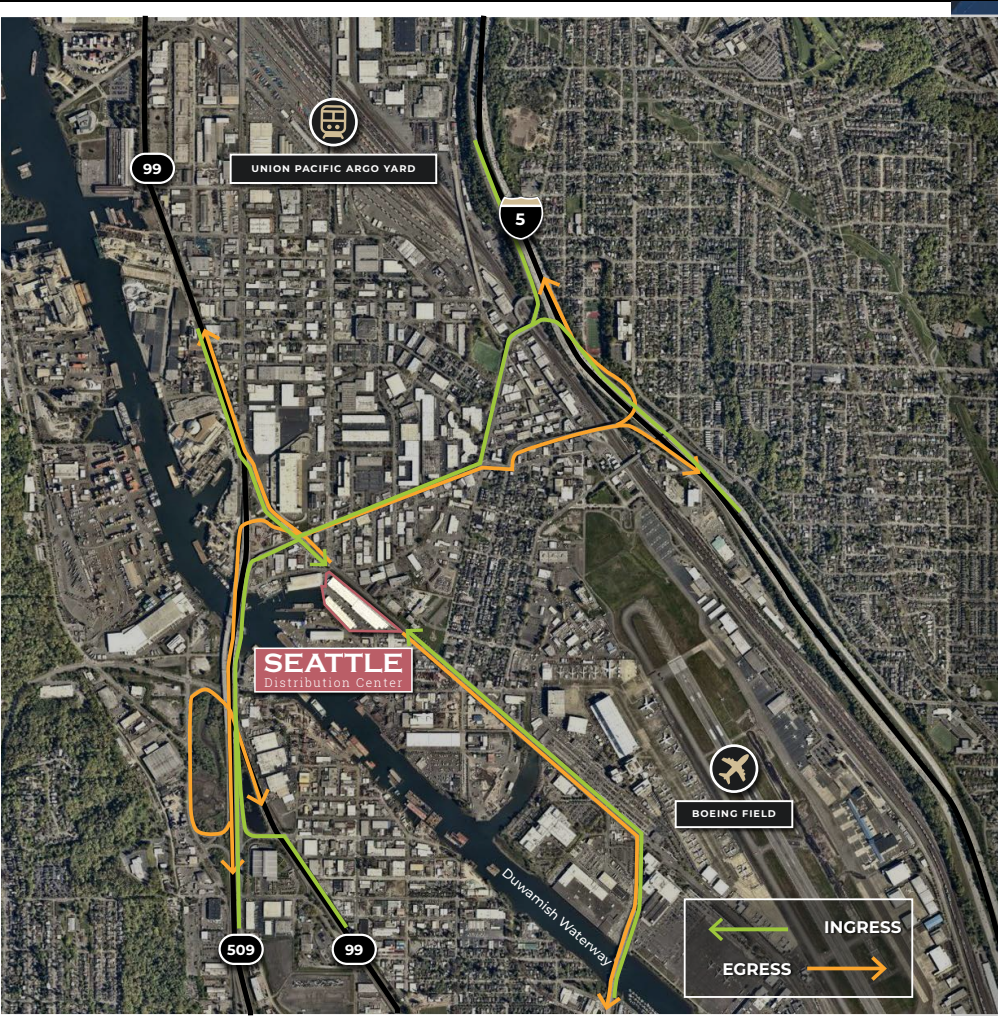
IMMEDIATE ACCESS TO THE BNSF RAILWAY



LESS THAN FOUR MILES TO THE PORT OF SEATTLE



EASY ACCESS TO I-5 AND HIGHWAY 99



**Kevin Skillestad**

+1 206 715 0757

kevin.skillestad@kbcadvisors.com

**Matt Wood, SIOR**

+1 206 595 6814

matt.wood@kbcadvisors.com

**Hans Wieser**

+1 425 765 7926

hans.wieser@kbcadvisors.com



© 2026 KBC ADVISORS. All rights reserved. The information contained in this document is proprietary to KBC ADVISORS and remains the property of KBC ADVISORS and shall be kept confidential. Reproduction of any part of this document is authorized only to the extent necessary for its evaluation. It is not to be shown to any third party without the prior written authorization of KBC ADVISORS. Third-party information contained in this document has been obtained from sources believed to be reliable but has not been verified for accuracy or completeness, and KBC Advisors disclaims any guarantees, warranties or representations, express or implied, as to the completeness or accuracy as to that information.