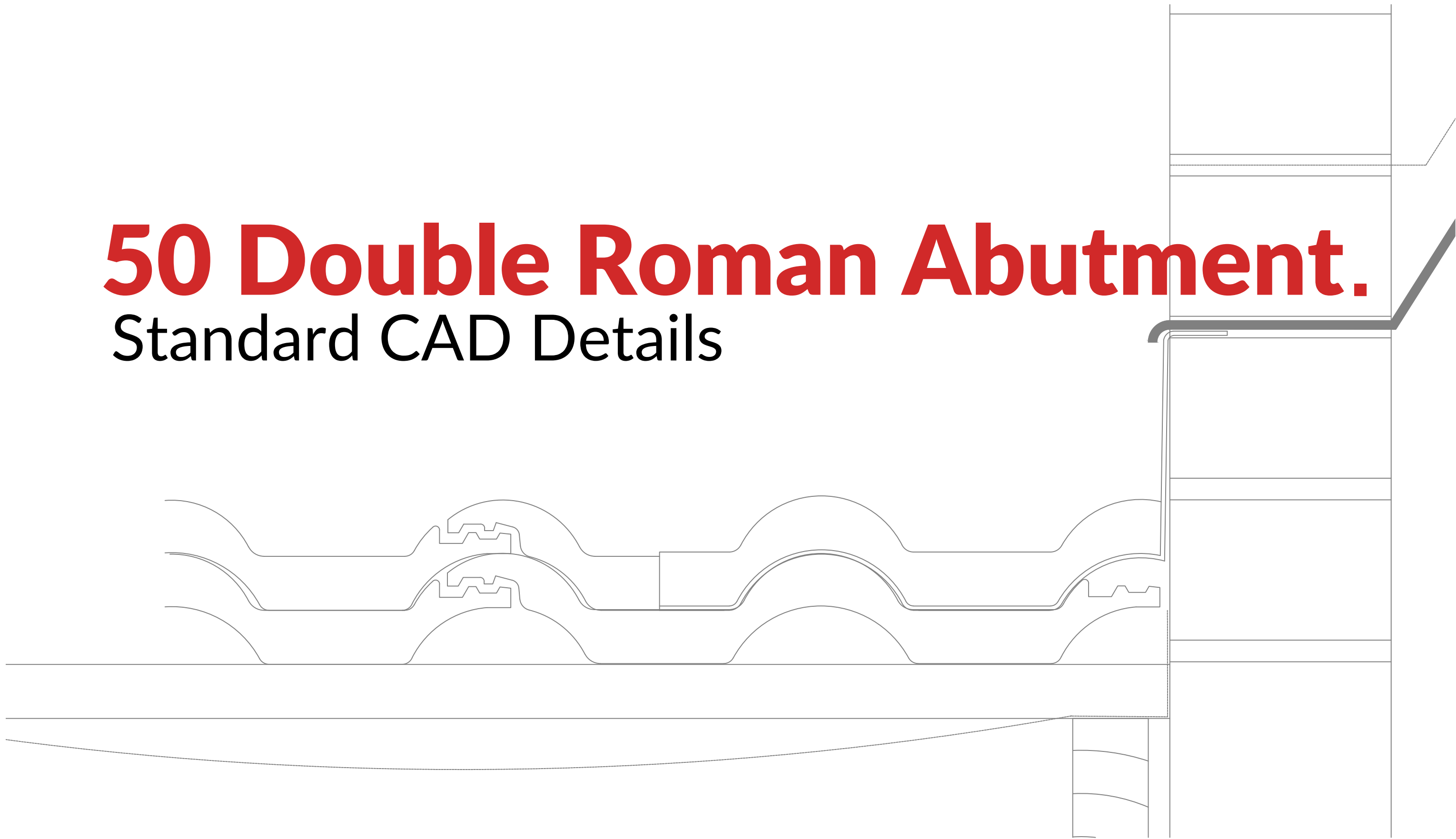
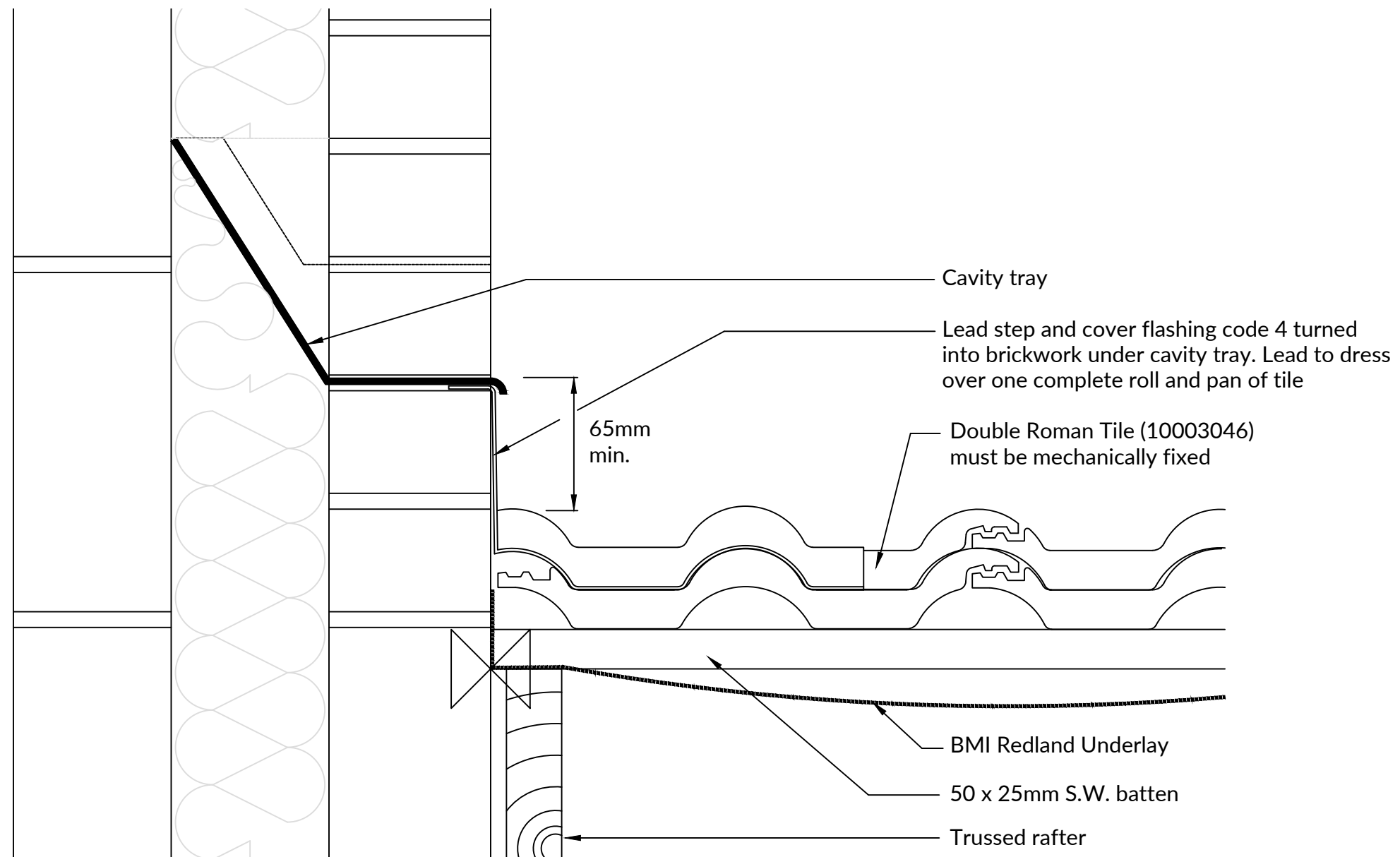


# 50 Double Roman Abutment.

## Standard CAD Details





660 LEAD SIDE ABUTMENT

- \* Turn underlay not less than 50mm up abutment.
- \* Cut or fit tiles closely to abutment.
- \* Ensure that code 4 lead step and cover flashing is dressed closely over one complete roll and pan of tile.

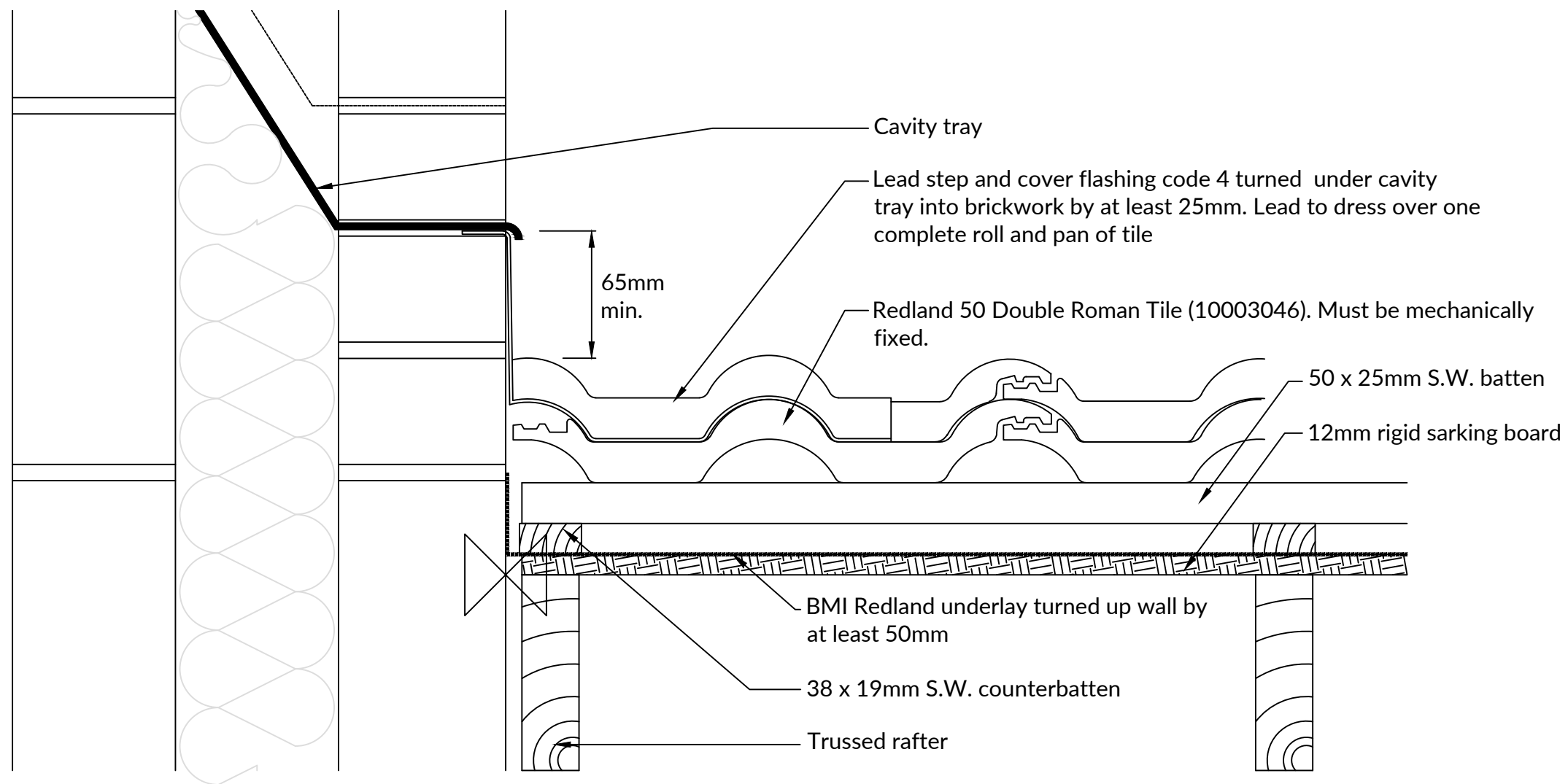


BMI Group UK Limited  
[bmigroup.com/uk](http://bmigroup.com/uk)  
 T: +44 (0) 330 123 4585  
 E: [technical.redland@bmigroup.com](mailto:technical.redland@bmigroup.com)

<b>Drawing Title:</b>	Lead Side Abutment				
<b>System:</b>	50 Double Roman				
<b>Dwg. No:</b>	DR00SDE1	<b>Date:</b>	18 May 2022	<b>Scale</b>	NTS

This drawing has been prepared for general information purposes only. This details drawing is to recommend the correct procedure for installing BMI products. All other building details are indicative and are not to be used for building construction. (Do not scale- use figured dimensions only)

© This drawing and the design therein is the exclusive property of BMI Group UK Limited. It should not be copied or reproduced without consent and shall only be used in reference to materials or goods supplied by them.



660 LEAD SIDE ABUTMENT – RIGID SARKING

- \* Ensure that rigid sarking board and counterbattens are properly fixed, rigid sarking board finishes 10mm from wall and BMI Redland underlay is turned up wall by at least 50mm.
- \* Finish 50 x 25mm S.W. tiling battens 10mm short of wall.
- \* Cut or fit Redland 50 Double Roman Tiles (10003046) closely to abutment.
- \* Ensure that code 4 lead step and cover flashing is dressed closely over one complete roll and pan of tile, turned up wall by at least 65mm, and turned under cavity tray into brickwork by at least 25mm.

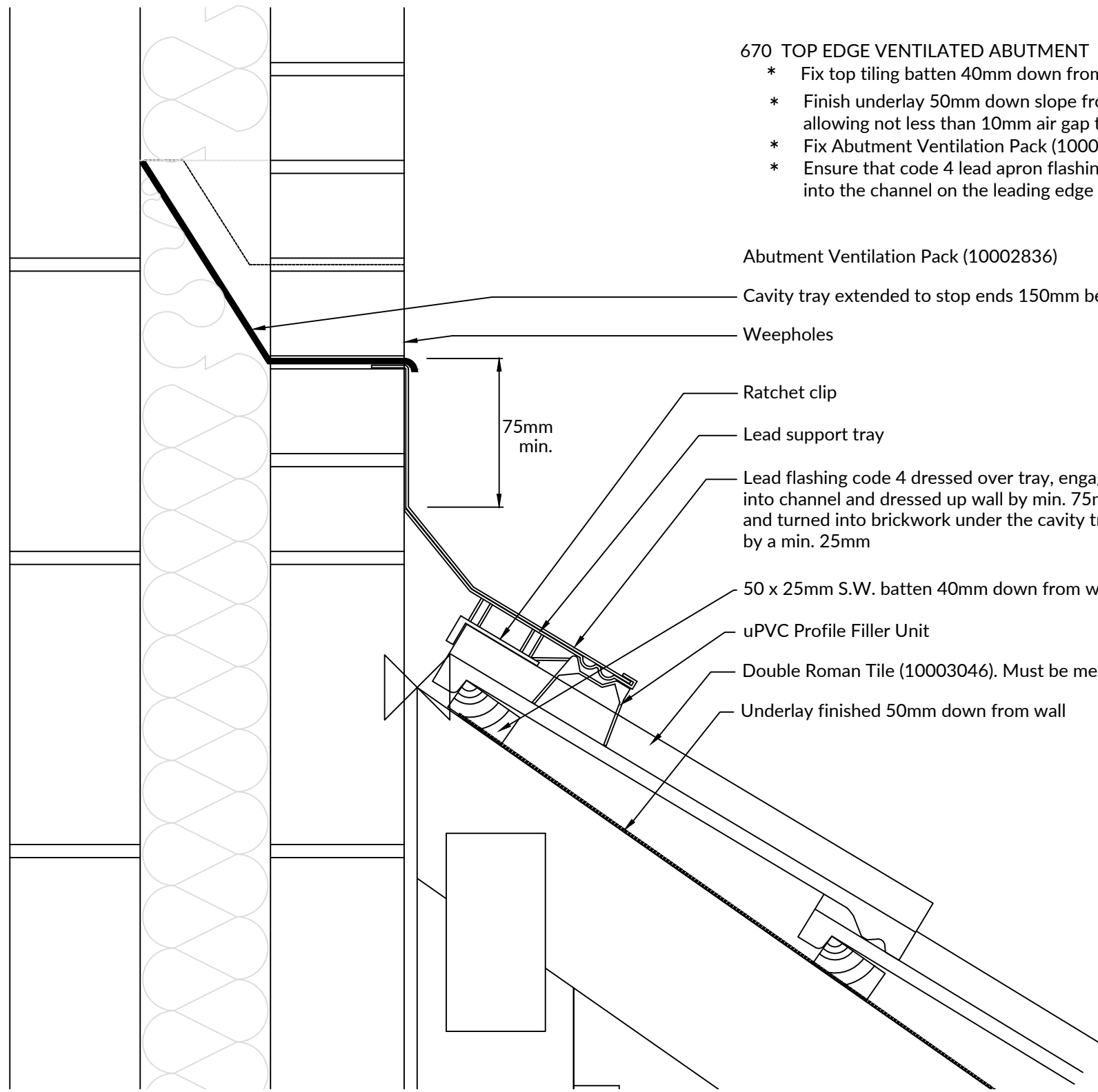


BMI Group UK Limited  
[bmigroup.com/uk](http://bmigroup.com/uk)  
 T: +44 (0) 330 123 4585  
 E: [technical.redland@bmigroup.com](mailto:technical.redland@bmigroup.com)

<b>Drawing Title:</b>	Lead Side Abutment - Sarking				
<b>System:</b>	50 Double Roman				
<b>Dwg. No:</b>	DR00SDK1	<b>Date:</b>	18 May 2022	<b>Scale</b>	NTS

This drawing has been prepared for general information purposes only. This details drawing is to recommend the correct procedure for installing BMI products. All other building details are indicative and are not to be used for building construction. (Do not scale- use figured dimensions only)

© This drawing and the design therein is the exclusive property of BMI Group UK Limited. It should not be copied or reproduced without consent and shall only be used in reference to materials or goods supplied by them.



**670 TOP EDGE VENTILATED ABUTMENT**

- \* Fix top tiling batten 40mm down from wall
- \* Finish underlay 50mm down slope from wall allowing not less than 10mm air gap to abutment.
- \* Fix Abutment Ventilation Pack (10002836) over tiles.
- \* Ensure that code 4 lead apron flashing is securely engaged into the channel on the leading edge of the support tray provided.

- Abutment Ventilation Pack (10002836)
- Cavity tray extended to stop ends 150mm beyond abutment verges
- Weepholes
- 75mm min.
- Ratchet clip
- Lead support tray
- Lead flashing code 4 dressed over tray, engaged into channel and dressed up wall by min. 75mm and turned into brickwork under the cavity tray by a min. 25mm
- 50 x 25mm S.W. batten 40mm down from wall
- uPVC Profile Filler Unit
- Double Roman Tile (10003046). Must be mechanically fixed
- Underlay finished 50mm down from wall

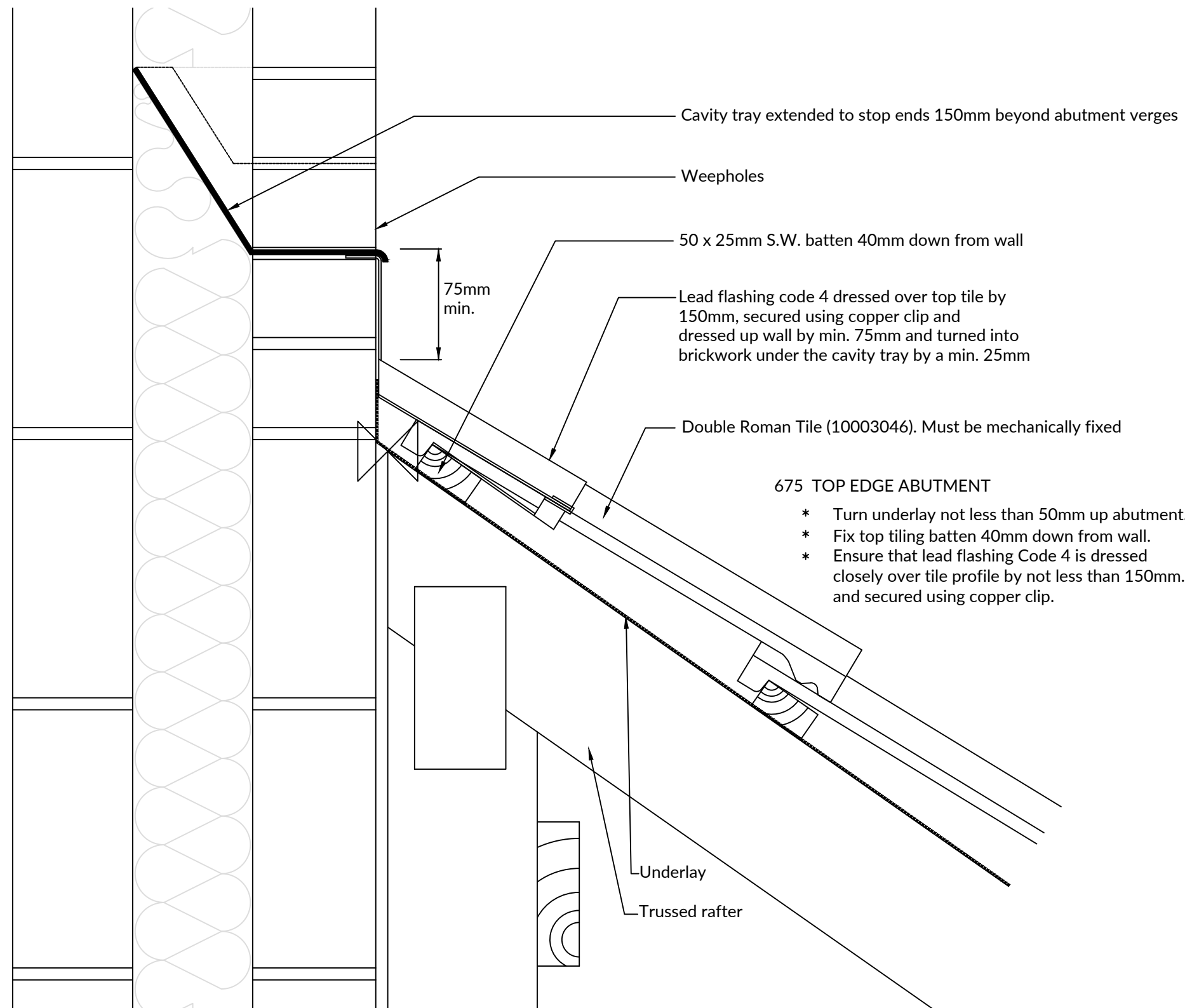


BMI Group UK Limited  
[bmigroup.com/uk](http://bmigroup.com/uk)  
 T: +44 (0) 330 123 4585  
 E: [technical.redland@bmigroup.com](mailto:technical.redland@bmigroup.com)

<b>Drawing Title:</b>	Top Edge Ventiladed Abutment				
<b>System:</b>	50 Double Roman / Top Edge Abutment				
<b>Dwg. No:</b>	DR35TOP1	<b>Date:</b>	18 May 2022	<b>Scale</b>	NTS

This drawing has been prepared for general information purposes only. This details drawing is to recommend the correct procedure for installing BMI products. All other building details are indicative and are not to be used for building construction. (Do not scale- use figured dimensions only)

© This drawing and the design therein is the exclusive property of BMI Group UK Limited. It should not be copied or reproduced without consent and shall only be used in reference to materials or goods supplied by them.

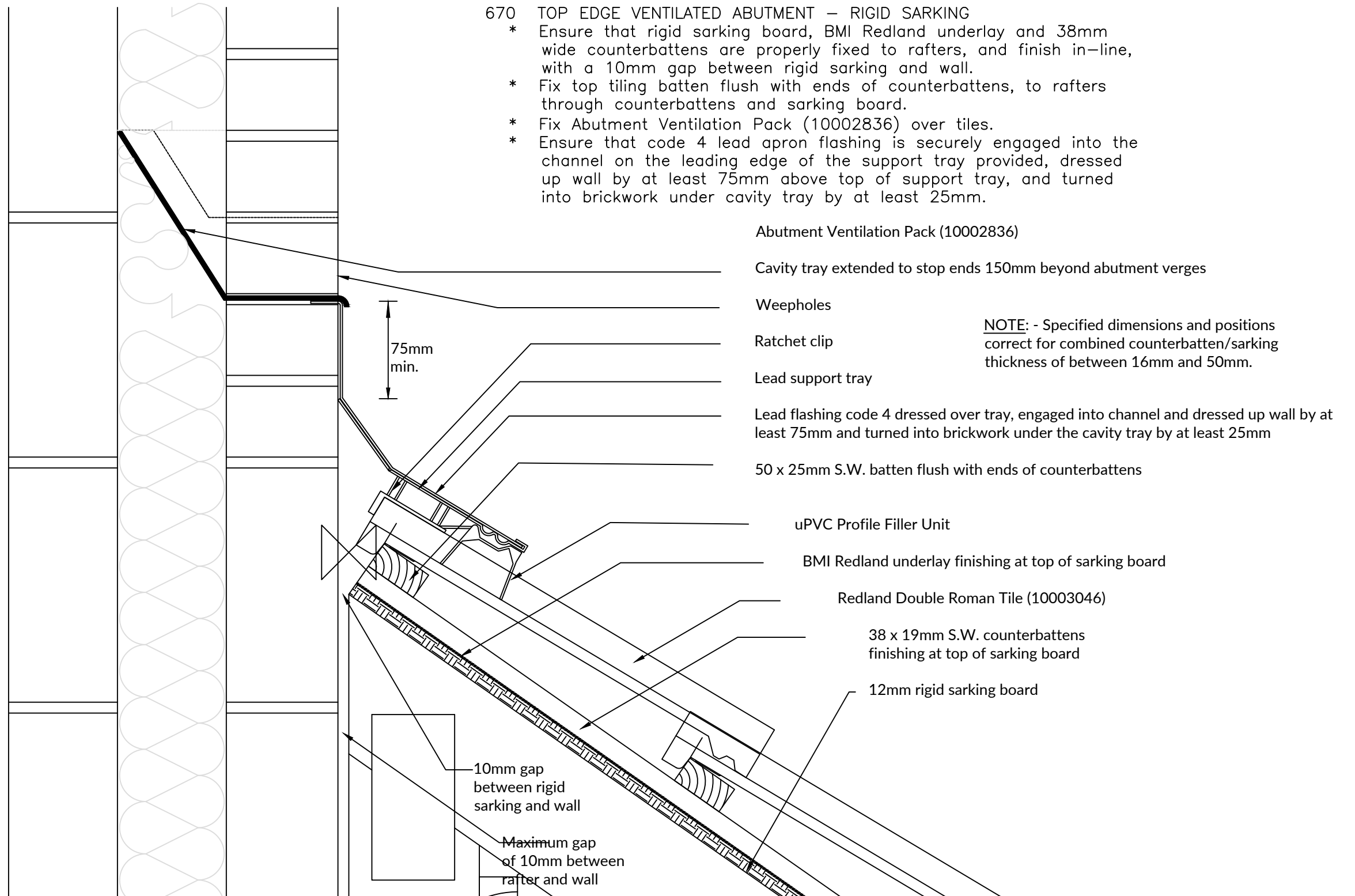


BMI Group UK Limited  
[bmigroup.com/uk](http://bmigroup.com/uk)  
 T: +44 (0) 330 123 4585  
 E: [technical.redland@bmigroup.com](mailto:technical.redland@bmigroup.com)

<b>Drawing Title:</b>	Top Edge Abutment				
<b>System:</b>	50 Double Roman				
<b>Dwg. No:</b>	DR35TOP2	<b>Date:</b>	18 May 2022	<b>Scale</b>	NTS

This drawing has been prepared for general information purposes only. This details drawing is to recommend the correct procedure for installing BMI products. All other building details are indicative and are not to be used for building construction. (Do not scale- use figured dimensions only)

© This drawing and the design therein is the exclusive property of BMI Group UK Limited. It should not be copied or reproduced without consent and shall only be used in reference to materials or goods supplied by them.

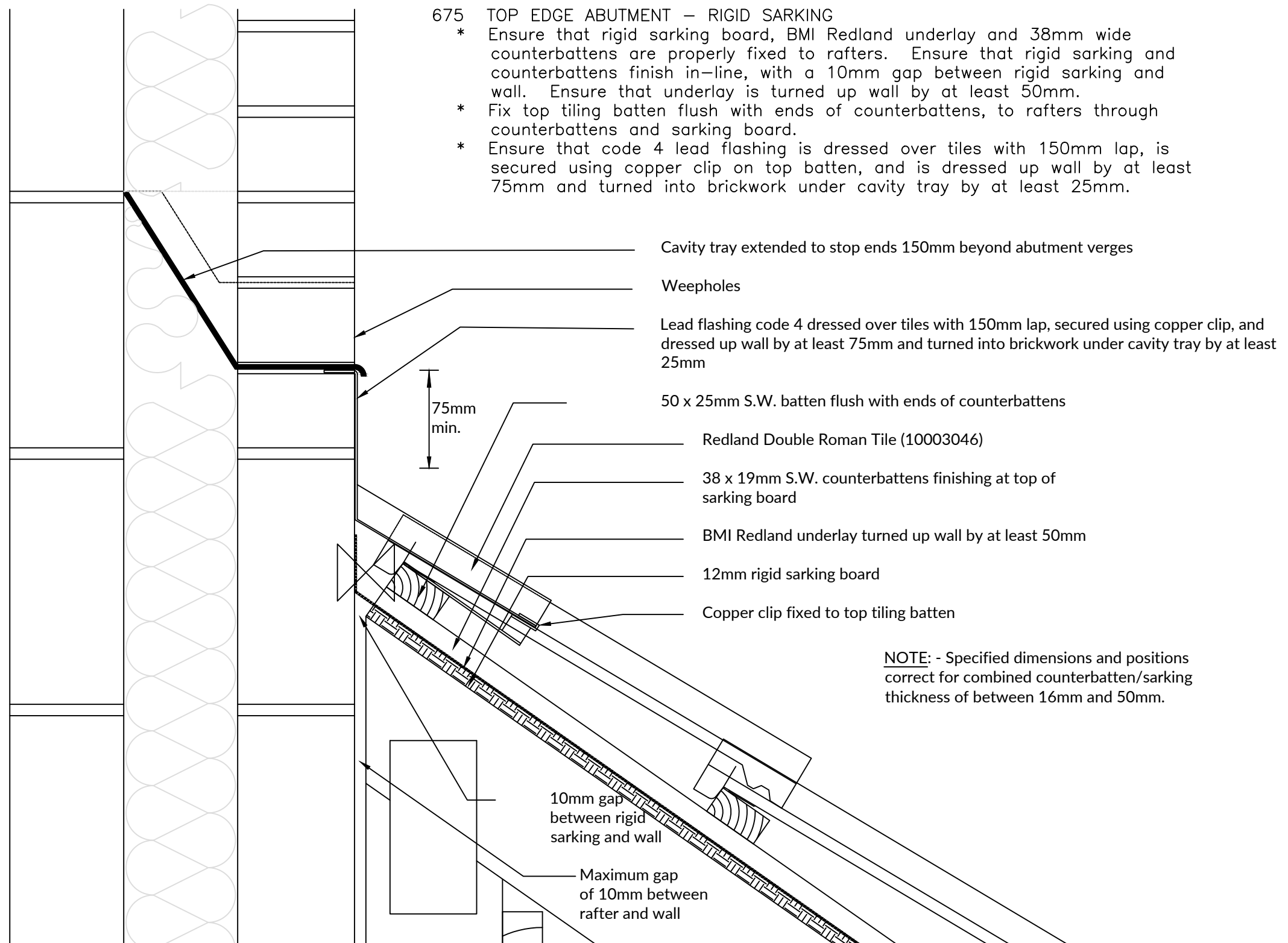


BMI Group UK Limited  
[bmigroup.com/uk](http://bmigroup.com/uk)  
 T: +44 (0) 330 123 4585  
 E: [technical.redland@bmigroup.com](mailto:technical.redland@bmigroup.com)

<b>Drawing Title:</b>	Top Edge Ventiladed Abutment - Sarking				
<b>System:</b>	50 Double Roman / Top Edge Abutment				
<b>Dwg. No:</b>	DR35TPK1	<b>Date:</b>	18 May 2022	<b>Scale</b>	NTS

This drawing has been prepared for general information purposes only. This details drawing is to recommend the correct procedure for installing BMI products. All other building details are indicative and are not to be used for building construction. (Do not scale- use figured dimensions only)

© This drawing and the design therein is the exclusive property of BMI Group UK Limited. It should not be copied or reproduced without consent and shall only be used in reference to materials or goods supplied by them.



BMI Group UK Limited  
[bmigroup.com/uk](http://bmigroup.com/uk)  
 T: +44 (0) 330 123 4585  
 E: [technical.redland@bmigroup.com](mailto:technical.redland@bmigroup.com)

<b>Drawing Title:</b>	Top Edge Abutment - Sarking				
<b>System:</b>	50 Double Roman / Top Edge Abutment				
<b>Dwg. No:</b>	DR35TPK2	<b>Date:</b>	18 May 2022	<b>Scale</b>	NTS

This drawing has been prepared for general information purposes only. This details drawing is to recommend the correct procedure for installing BMI products. All other building details are indicative and are not to be used for building construction. (Do not scale- use figured dimensions only)

© This drawing and the design therein is the exclusive property of BMI Group UK Limited. It should not be copied or reproduced without consent and shall only be used in reference to materials or goods supplied by them.