



Superior Clamping and Gripping



Product Information

Gripper for small components KGG 100

KGG

Gripper for small components

Compact. Flexible. Slim.

Gripper for small components KGG

Narrow 2-finger parallel gripper with large stroke

Field of application

for universal use in clean environments with light to medium workpiece weights and a large stroke range

Advantages – Your benefits

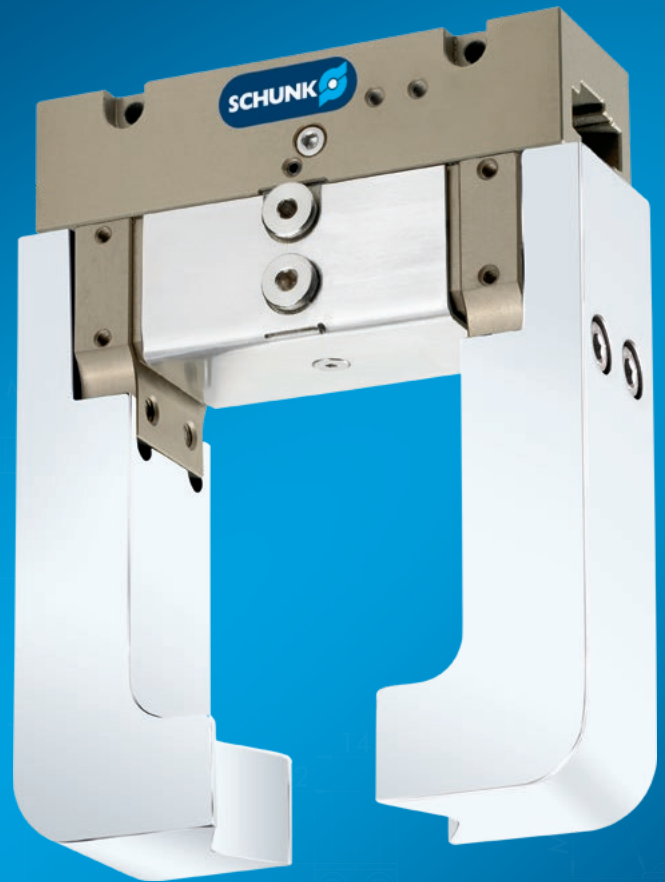
Robust T-slot guidance for high maximum moments

Pneumatic 2-piston drive design for direct power transmission and high efficiency

Rack and pinion principle for centric clamping

Mounting from two sides in three screw directions for universal and flexible gripper assembly

Air supply via hose-free direct connection or screw connections for flexible pressure supply in all automated systems



Sizes
Quantity: 7



Weight
0.09 .. 4.2 kg



Gripping force
45 .. 540 N



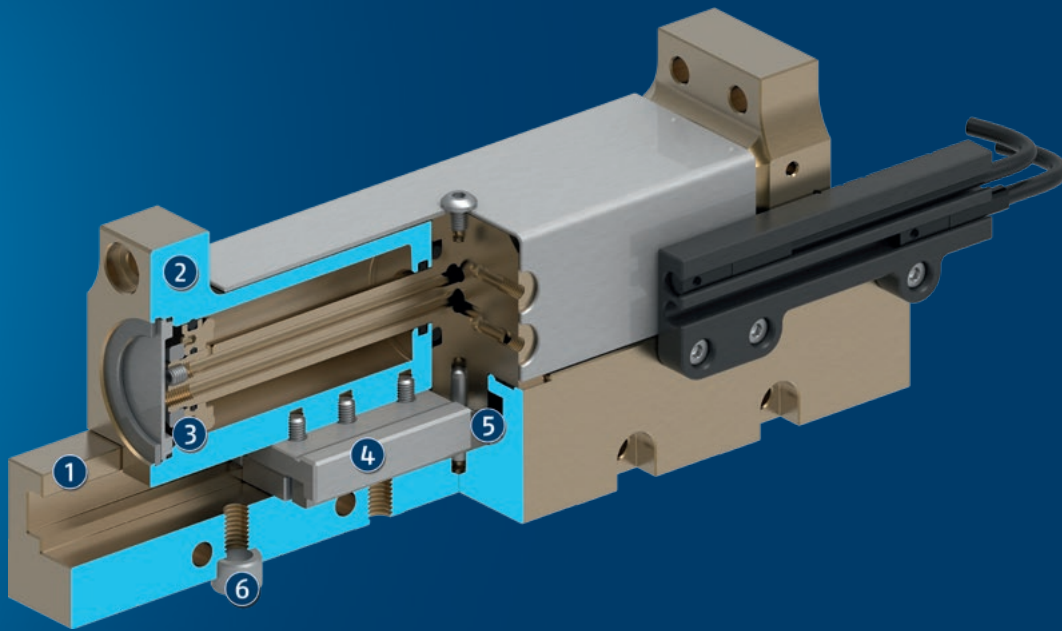
Stroke per jaw
10 .. 60 mm



Workpiece weight
0.23 .. 2.7 kg

Functional description

The aligned base jaws are actuated with compressed air directly by the fixed piston, which opens and closes them. The base jaws are synchronized by the internal rack and pinion arrangement.



- ① **Housing**
is weight-optimized due to the use of high-strength aluminum alloy
- ② **Base Jaw**
for the connection of workpiece-specific gripper fingers
- ③ **Drive**
pneumatic 2-piston system
- ④ **Sliding guide**
high maximum moments due to the robust T-slot guidance
- ⑤ **Kinematics**
pinion and rack principle for centric clamping, even at large strokes
- ⑥ **Centering and mounting possibilities**
for assembly of the gripper to a base area and at the long side

General notes about the series

Operating principle: Directly driven base jaws, synchronized by rack and pinion

Housing material: Aluminum alloy, anodized

Base jaw material: Aluminum alloy, anodized

Actuation: pneumatic, with filtered compressed air as per ISO 8573-1:2010 [7:4:4].

Warranty: 24 months

Scope of delivery: Brackets for proximity switches, centering sleeves, O-rings for direct connection, assembly instructions (operating manual with declaration of incorporation is available online)

Gripping force maintenance device: possible with pressure maintenance valve SDV-P

Gripping force: is the arithmetic sum of the individual force applied to each jaw at distance P (see illustration).

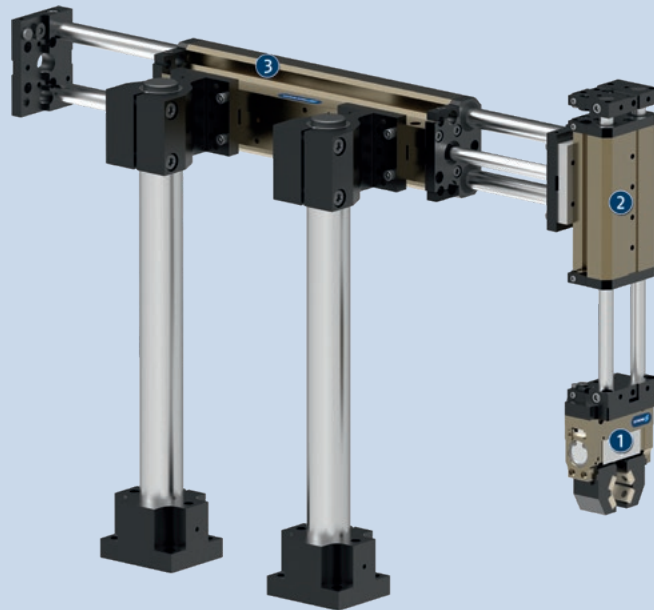
Finger length: is measured from the reference surface as the distance P in direction to the main axis.

The maximum permissible finger length applies until the nominal operating pressure is achieved. With higher pressures, the finger length must be reduced proportionally to the nominal operating pressure.

Repeat accuracy: is defined as a distribution of the end position for 100 consecutive strokes.

Workpiece weight: is calculated for force-fit gripping with a coefficient of static friction of 0.1 and a safety factor of 2 against workpiece slippage at acceleration due to gravity g. For form-fit or capture gripping, there are significantly higher permissible workpiece weights.

Closing and opening times: are purely the times that the base jaws or fingers are in motion. Valve switching times, hose fill times, or PLC reaction times are not included, and are to be considered when cycle times are calculated.



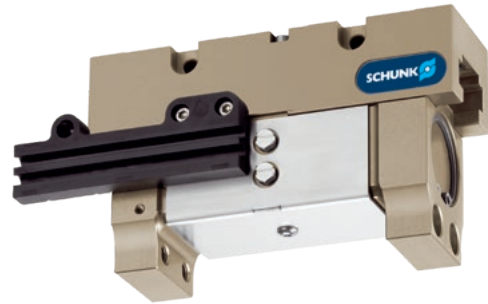
Application example

Sorting unit for small components which require an especially long gripper stroke due to their variation in size.

- 1 2-finger parallel gripper KGG with workpiece-specific fingers
- 2 Linear module KLM for vertical movement
- 3 Linear module KLM for horizontal movement

SCHUNK offers more ...

The following components make the product even more productive – the suitable addition for the highest functionality, flexibility, reliability, and controlled production.



Miniature swivel unit



Linear module



Pick & Place Unit



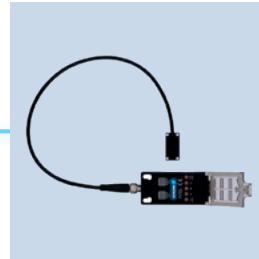
Pressure maintenance valve



Inductive proximity switches



Magnetic switches



Flexible position sensor



Finger blank

① For more information on these products can be found on the following product pages or at schunk.com.

Options and special information

Please note that the weight of the gripper fingers should be as low as possible for long-stroke grippers.

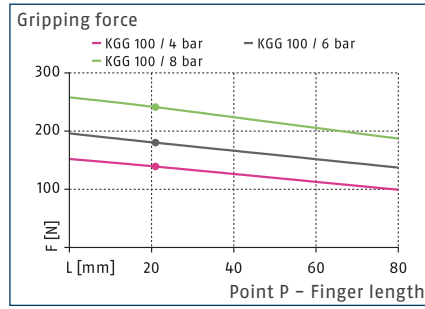
NEW: Version with food -compliant lubrication (H1G): as a solution for an easy entry into medical technology, lab automation, pharmaceutical and food industry. The requirements of EN 1672-2:2020 are not fully met.

KGG 100

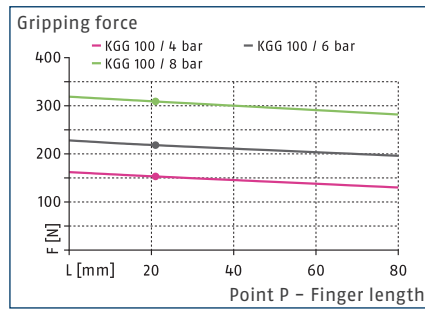
Gripper for small components



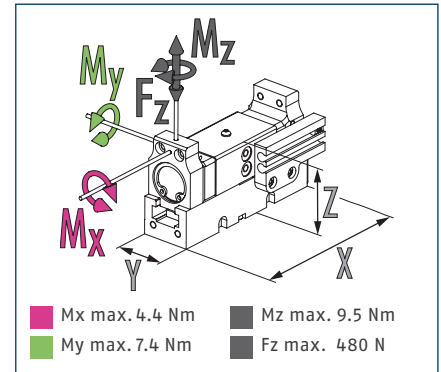
Gripping force O.D. gripping



Gripping force I.D. gripping



Dimensions and maximum loads



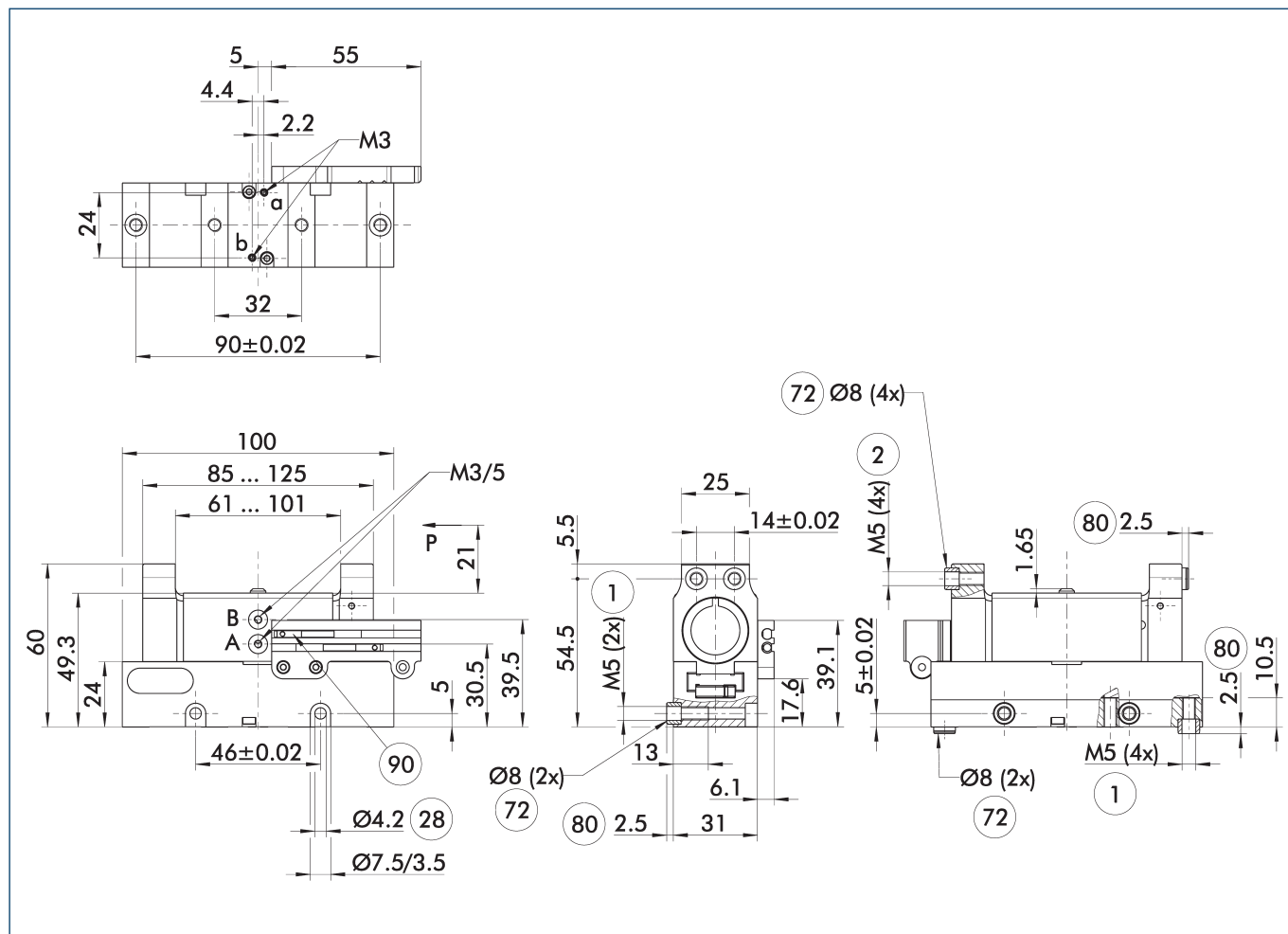
① The indicated moments and forces are static values, apply for each base jaw and may appear simultaneously. Loads may additionally occur to the moment produced by the gripping force itself.

Technical data

Description		KGG 100-40	KGG 100-80
ID		0303065	0303066
Stroke per jaw	[mm]	20	40
Closing/opening force	[N]	175/220	175/220
Weight	[kg]	0.37	0.5
Recommended workpiece weight	[kg]	0.9	0.9
Fluid consumption double stroke	[cm³]	22.5	45
Min./nom./max. operating pressure	[bar]	2.5/6/8	2.5/6/8
Closing/opening time	[s]	0.09/0.07	0.19/0.15
Max. permissible finger length	[mm]	80	80
Max. permissible mass per finger	[kg]	0.3	0.3
IP protection class		40	40
Min./max. ambient temperature	[°C]	5/90	5/90
Repeat accuracy	[mm]	0.02	0.02
Cleanroom class ISO 14644-1:1999		7	7
Dimensions X x Y x Z	[mm]	100 x 31 x 49.3	157 x 31 x 49.3

① It may take a few 100 gripping cycles until the full gripping force (as indicated in the data table) will be available.

Main view KGG 100-40



The drawing shows the gripper in the basic version with closed jaws, without dimensional consideration of the options described below.

① The SDV-P pressure maintenance valve can be used as a gripping force maintenance device (see catalog section on accessories).

A, a Main / direct connection, gripper opening

B, b Main / direct connection, gripper closing

① Gripper connection

② Finger connection

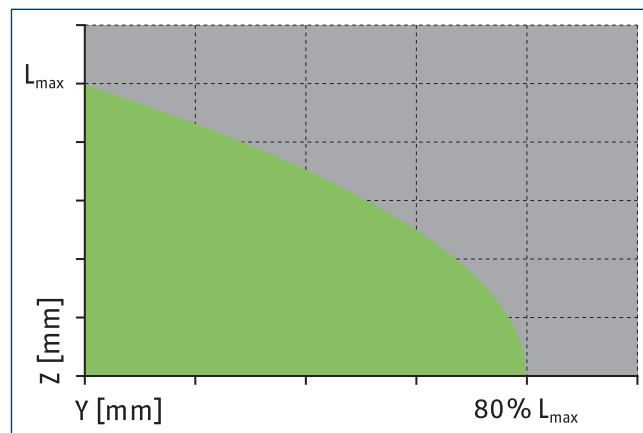
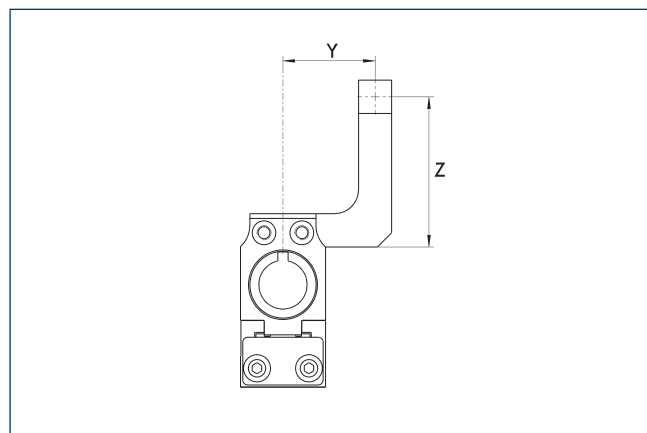
②8 Through-hole

⑦2 Fit for centering sleeves

⑧0 Depth of the centering sleeve hole in the counter part

⑨0 Sensor MMS 22..

Maximum permitted finger projection



■ Permitted range

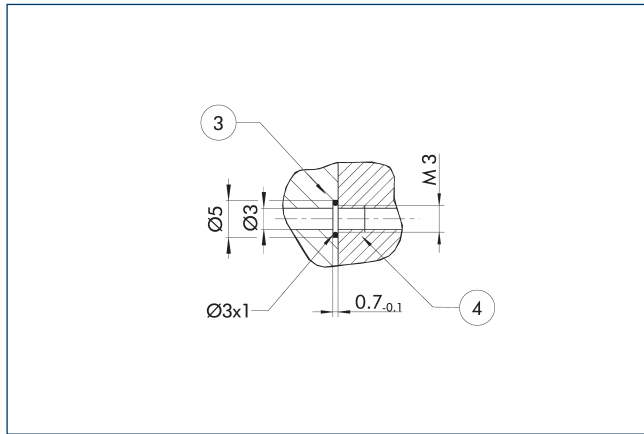
■ Inadmissible range

L_{max} is equivalent to the maximum permitted finger length, see the technical data table.

KGG 100

Gripper for small components

Hose-free direct connection M3

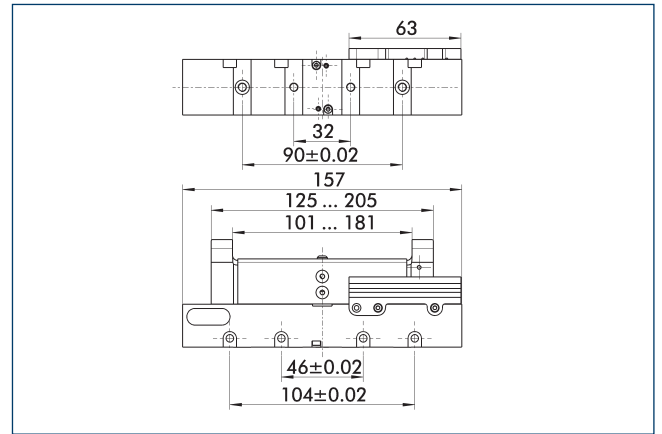


③ Adapter

④ Grippers

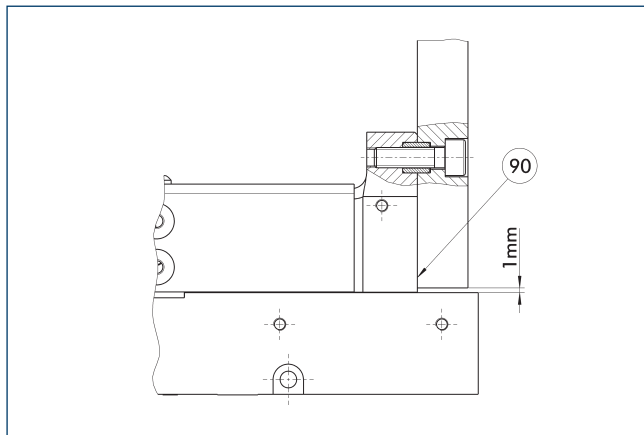
The direct connection is used for supplying compressed air without hoses. Instead, the pressure medium is fed through bore-holes in the mounting plate.

Stroke variant KGG 100-80



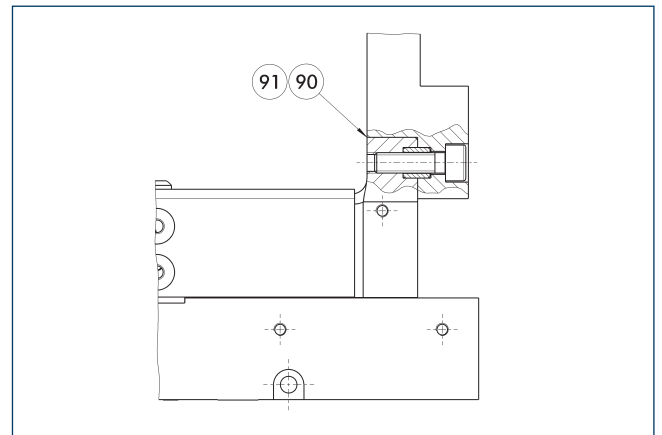
The drawing shows changes in dimensions of the version with a different stroke compared to the version shown in the main view.

Jaw design O.D. gripping



⑨⑩ Support of the top jaws at the base jaw

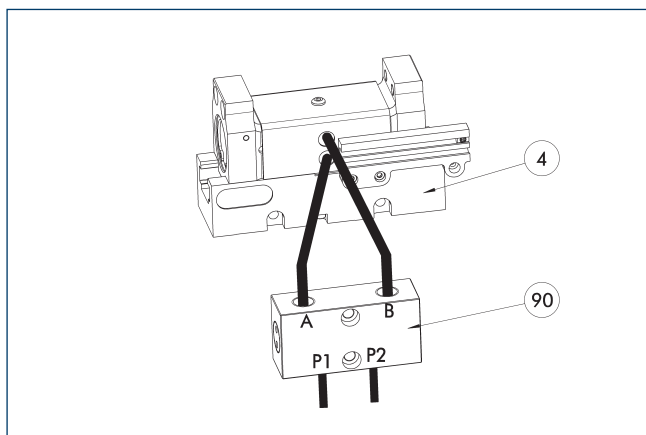
Jaw design I.D. gripping



⑨⑩ Support of the top jaws at the base jaw

⑨① For dimensions of steps at the top jaw see drawings of finger blanks

SDV-P pressure maintenance valve



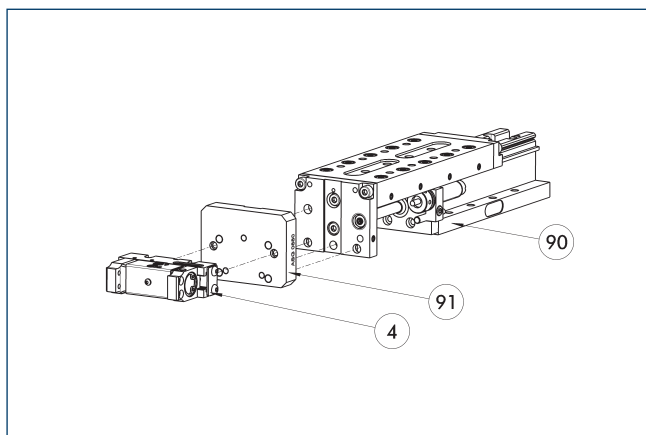
- ④ Grippers
- ⑨⑩ SDV-P pressure maintenance valve

The SDV-P pressure maintenance valve ensures in emergency STOP situations that the pressure in the piston chamber of pneumatic gripper, swivel, linear, and quick-change modules is temporarily maintained.

Description	ID	Recommended hose diameter [mm]
Pressure maintenance valve		
SDV-P 04	0403130	6
Pressure maintenance valve with air bleed screw		
SDV-P 04-E	0300120	6

① In order to achieve the specified closing and opening time for each gripper variant, the recommended hose diameter must be used. The direct allocation of the respective variant of the gripper for the respective SDV-P can be found at schunk.com.

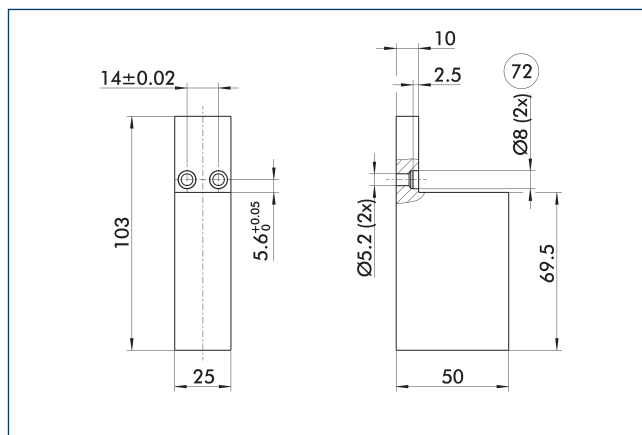
Modular Assembly Automation



- ④ Grippers
- ⑨⑩ CLM/KLM/LM/ELP/ELM/ELS/HLM linear modules
- ⑨⑪ ASG adapter plate

Grippers and linear modules can be combined with standard adapter plates from the modular assembly system. For more information see our main catalog "Modular Assembly Automation".

Finger blanks RB 100

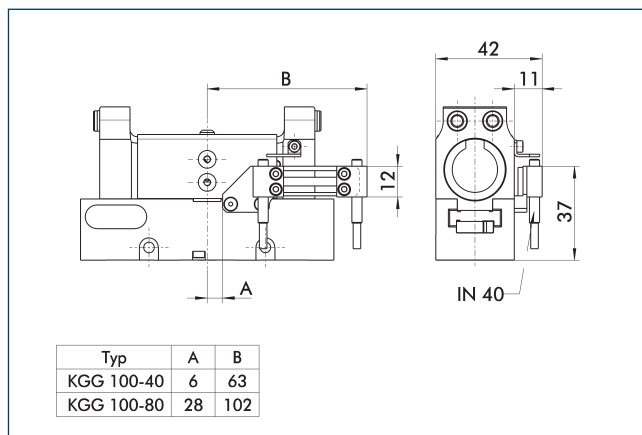


- ⑦② Fit for centering sleeves

The drawing shows the finger blank which can be reworked by the customer.

Description	ID	Material	Scope of delivery
Finger blank			
RB 100	0303090	Aluminum (3.3206)	2

Attachment kit for proximity switch



End position monitoring can be mounted with an attachment kit.

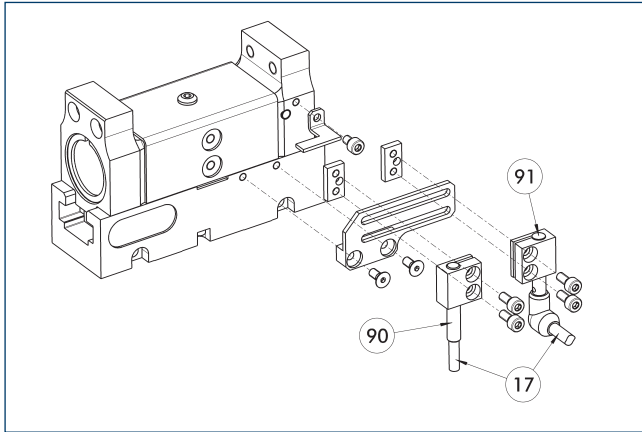
Description	ID
Attachment kit for proximity switch	
AS-KGG 100-40	0303082
AS-KGG 80-60/100-80/140-60	0303084

① This attachment kit needs to be ordered optionally as an accessory.

KGG 100

Gripper for small components

Inductive proximity switches



17 Cable outlet
90 Sensor IN ...

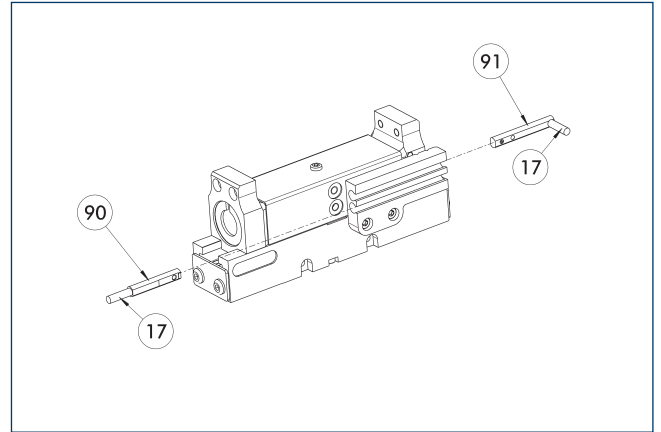
91 Sensor IN...-SA

End position monitoring can be mounted with an attachment kit.

Description	ID	Often combined
Attachment kit for proximity switch		
AS-KGG 100-40	0303082	
AS-KGG 80-60/100-80/140-60	0303084	
Inductive proximity switches		
IN 40-S-M12	0301574	
IN 40-S-M8	0301474	●
INK 40-S	0301555	
Inductive proximity switch with lateral cable outlet		
IN 40-S-M12-SA	0301577	
IN 40-S-M8-SA	0301473	●
INK 40-S-SA	0301565	

① Two sensors (closer/S) are required for each unit and extension cables are available as an option. This attachment kit needs to be ordered optionally as an accessory. For sensor cables, note the minimum permissible bending radii. These are generally 35 mm.

Electronic magnetic switch MMS



17 Cable outlet
90 Sensor MMS 22..

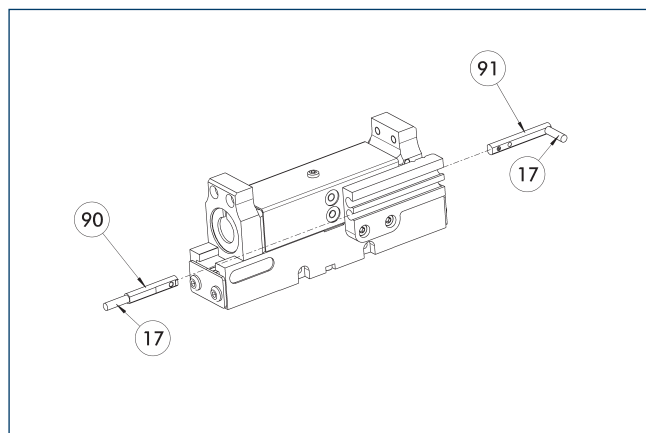
91 Sensor MMS 22...-SA

End position monitoring for mounting in the C-slot.

Description	ID	Often combined
Electronic magnetic switch		
MMS 22-S-M8-PNP	0301032	●
MMSK 22-S-PNP	0301034	
Electronic magnetic switches with lateral cable outlet		
MMS 22-S-M8-PNP-SA	0301042	●
MMSK 22-S-PNP-SA	0301044	
Reed Switches		
RMS 22-S-M8	0377720	●
Connection cables		
KA BG08-L 3P-0300-PNP	0301622	●
KA BG08-L 3P-0500-PNP	0301623	
KA BW08-L 3P-0300-PNP	0301594	
KA BW08-L 3P-0500-PNP	0301502	
clip for plug/socket		
CLI-M8	0301463	
Wireless sensor system		
RSS-T2	0377715	
RSS-T2-US/CA	0377717	
Cable extension		
KV BW08-SG08 3P-0030-PNP	0301495	
KV BW08-SG08 3P-0100-PNP	0301496	
KV BW08-SG08 3P-0200-PNP	0301497	●
Sensor distributor		
V2-M8	0301775	●
V4-M8	0301746	
V8-M8	0301751	

① Two sensors are required per unit for monitoring two positions. On option, extension cables and sensor distributors are available. Additional product variants of the sensor, and further information and technical data can be found in the catalog chapter sensor system.

Programmable magnetic switch MMS 22-PI1



- 17 Cable outlet
 90 Sensor MMS 22 PI1-...
 91 Sensor MMS 22 ..-PI1-...-SA

Position monitoring with one programmable position per sensor and integrated electronic system in the sensor. Can be programmed using MT magnetic teaching tool (included in the scope of delivery) or ST plug teaching tool (optional). End position monitoring for mounting in the C-slot. If the ST plug teaching tools are listed in the table provided, teaching is only possible with the ST teaching tools.

Description	ID	Often combined
Programmable magnetic switch		
MMS 22-PI1-S-M8-PNP	0301160	●
MMSK 22-PI1-S-PNP	0301162	
Programmable magnetic switch with lateral cable outlet		
MMS 22-PI1-S-M8-PNP-SA	0301166	●
MMSK 22-PI1-S-PNP-SA	0301168	
Programmable magnetic switch with stainless steel housing		
MMS 22-PI1-S-M8-PNP-HD	0301110	●
MMSK 22-PI1-S-PNP-HD	0301112	

- ⓘ Two sensors are required per unit for monitoring two positions. On option, extension cables and sensor distributors are available. Additional product variants of the sensor, and further information and technical data can be found in the catalog chapter sensor system.



SCHUNK GmbH & Co. KG
Spann- und Greiftechnik

Bahnhofstr. 106 - 134
D-74348 Lauffen/Neckar
Tel. +49-7133-103-0
Fax +49-7133-103-2399
info@de.schunk.com
schunk.com

Folgen Sie uns | *Follow us*

