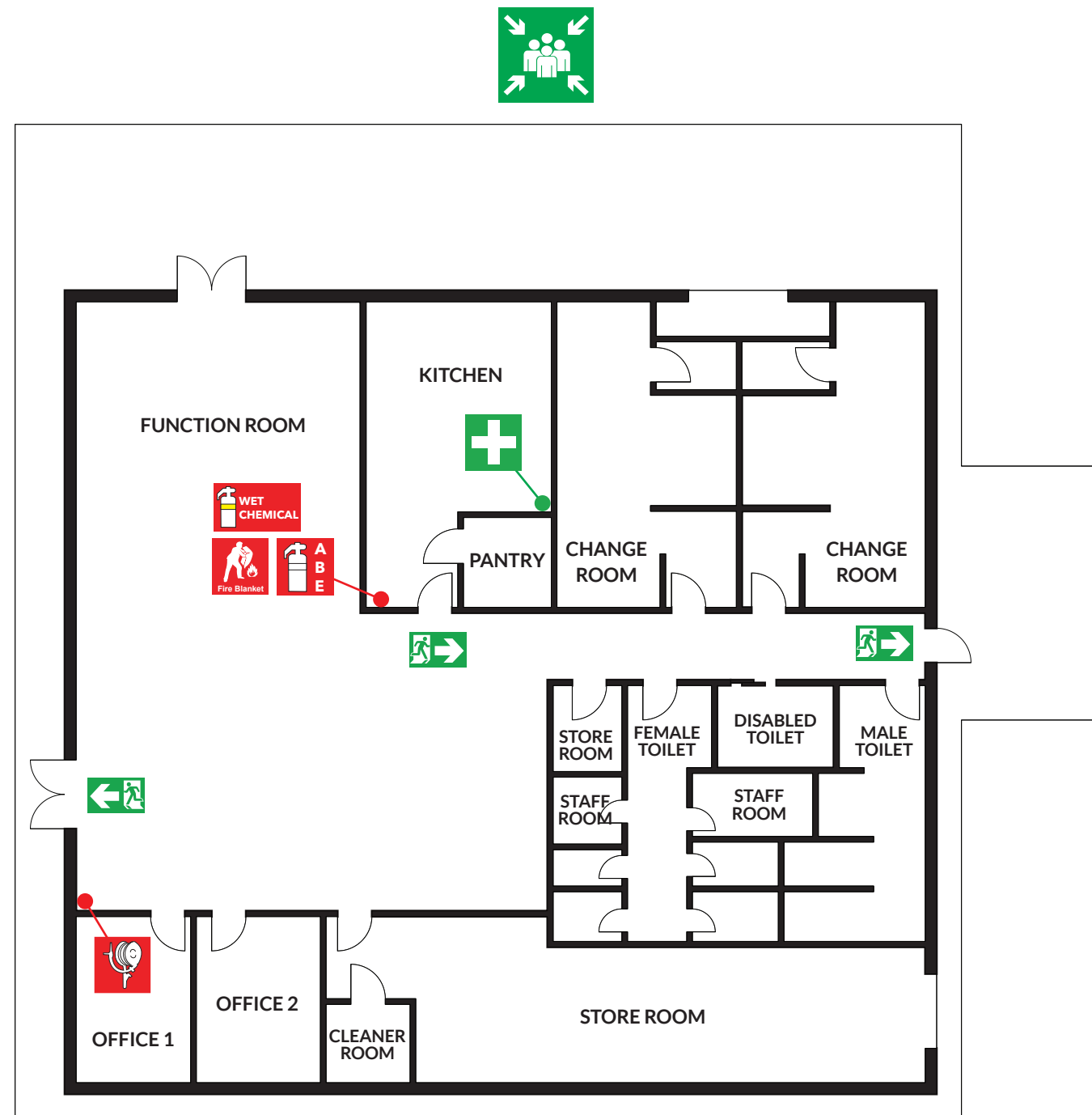


# EVACUATION DIAGRAM

**BOB BLACKBURN PAVILION - CHALLIS ROAD, SEVILLE GROVE WA 6112**



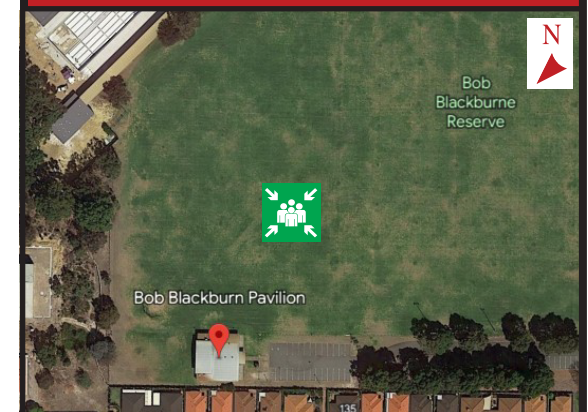
## EVACUATION PROCEDURE

1. Removal of people from the immediate Danger Area. Occupants and staff in the immediate danger area are to assemble at the **ASSEMBLY AREA**. When the area has been evacuated, all doors and windows should be closed to contain the fire.
2. Complete evacuation of the building.
3. Evacuation Wardens to complete a roll call to identify any persons unaccounted for.
4. Report all missing persons to Emergency Services.

## IN CASE OF FIRE

- R RESCUE** and relocate anyone in immediate danger.
- A ALERT** others by activating the building fire alarm.
- C CONFINE** the emergency by closing the doors.
- E EVACUATE** immediately. Do not use lifts. Use stairs.

## ASSEMBLY AREA ENTRANCE TO CAR PARK



## LEGEND



FIRE  
EXTINGUISHER



FIRE  
HOSE REEL



FIRE  
BLANKET



FIRST  
AID



ASSEMBLY  
AREA



EMERGENCY  
EXIT



EVACUATION  
ROUTE



ALTERNATIVE  
EVACUATION ROUTE



Issue Date : March 2023  
Validity Date : March 2028