

EVACUATION DIAGRAM

HAROLD KING COMMUNITY CENTRE - 9 GROVELANDS DRIVE, CAMILLO WA 6111

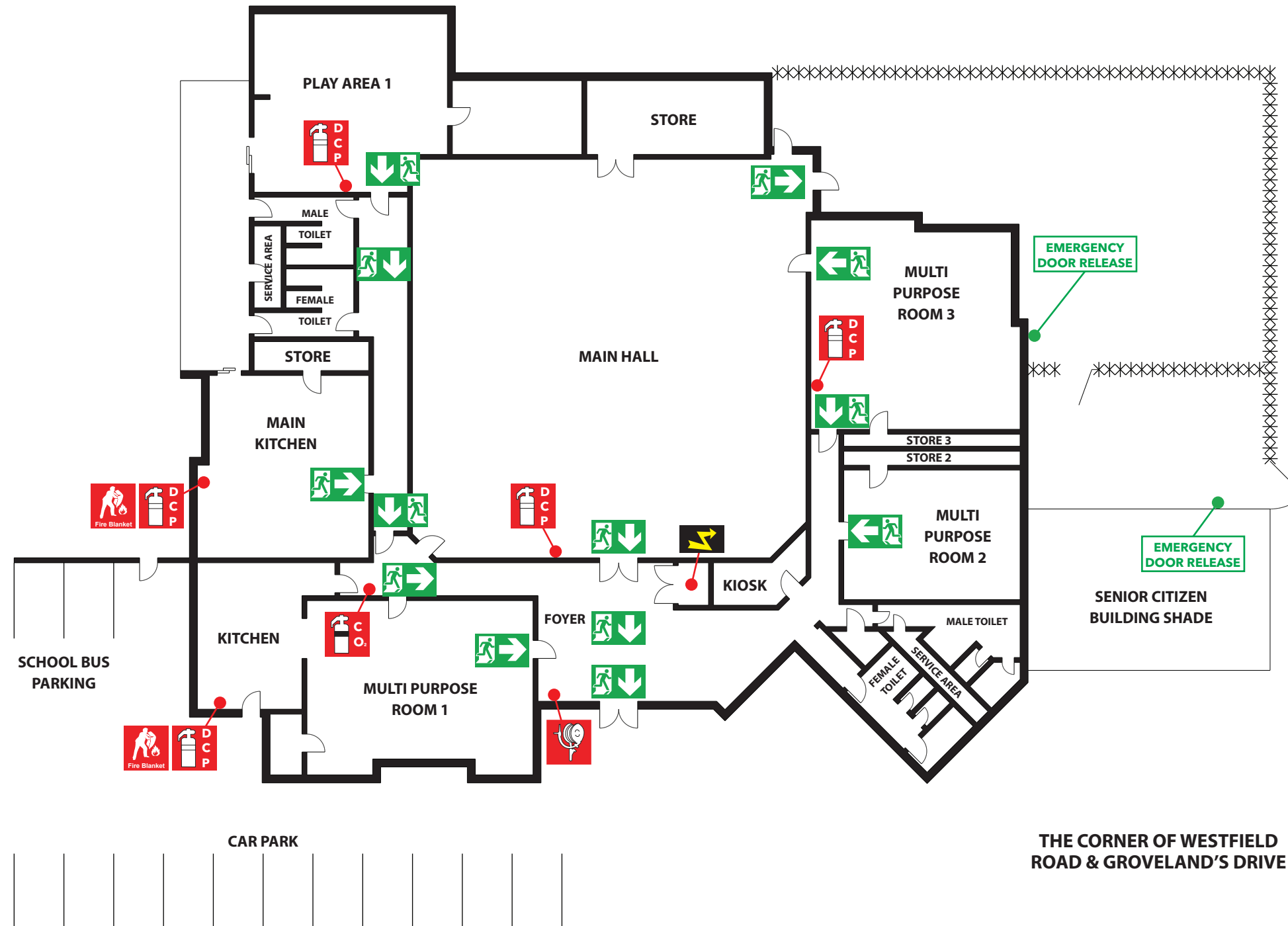
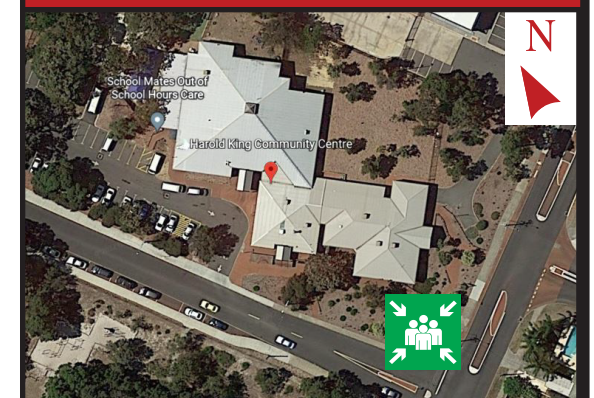
EVACUATION PROCEDURE

1. Removal of people from the immediate Danger Area. Occupants and staff in the immediate danger area are to assemble at the **ASSEMBLY AREA**. When the area has been evacuated, all doors and windows should be closed to contain the fire.
2. Complete evacuation of the building.
3. Evacuation Wardens to complete a roll call to identify any persons unaccounted for.
4. Report all missing persons to Emergency Services.

IN CASE OF FIRE

- R RESCUE** and relocate anyone in immediate danger.
- A ALERT** others by activating the building fire alarm.
- C CONFINE** the emergency by closing the doors.
- E EVACUATE** immediately. Do not use lifts. Use stairs.

ASSEMBLY AREA THE CORNER OF WESTFIELD ROAD & GROVELAND'S DRIVE



LEGEND



FIRE EXTINGUISHER



FIRE HOSE REEL



FIRE BLANKET



ASSEMBLY AREA



DISTRIBUTION BOARD



EMERGENCY EXIT



EVACUATION ROUTE



ALTERNATIVE EVACUATION ROUTE



Issue Date : March 2023
Validity Date : March 2028