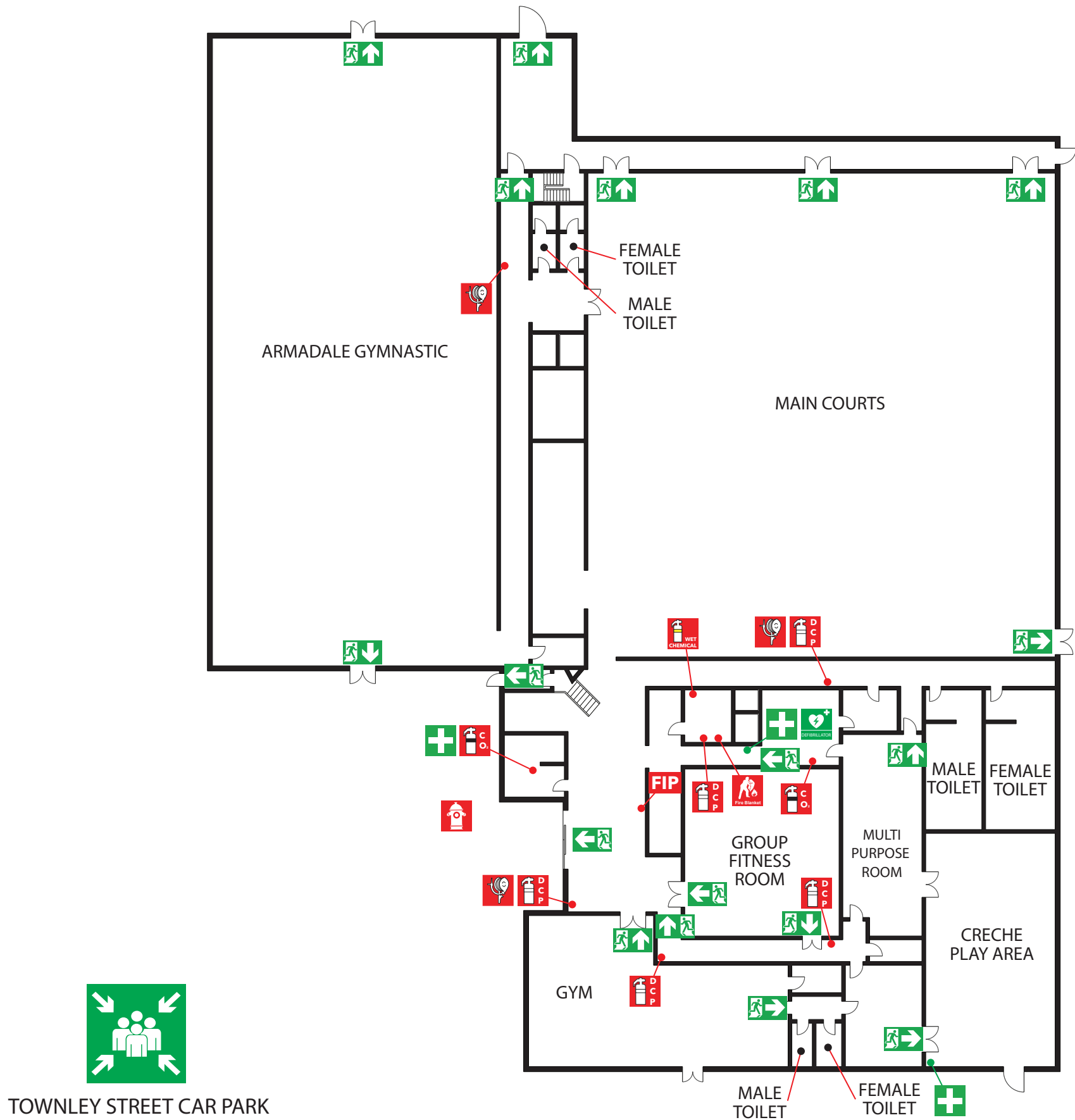


# EVACUATION DIAGRAM

## ARMADALE RECREATION CENTRE

4 TOWNLEY STREET, ARMADALE WA 6112



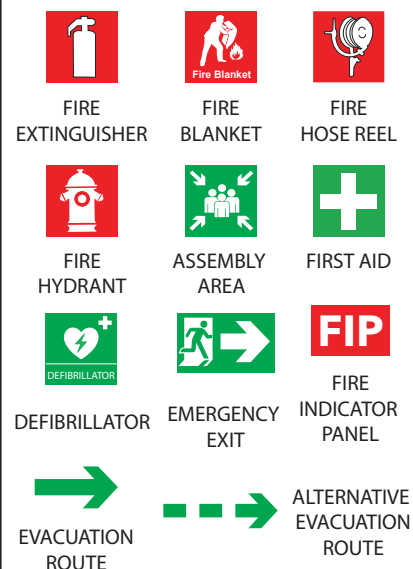
### EVACUATION PROCEDURE

1. Removal of people from the immediate Danger Area. Occupants and staff in the immediate danger area are to assemble at the **ASSEMBLY AREA**. When the area has been evacuated, all doors and windows should be closed to contain the fire.
2. Complete evacuation of the building.
3. Evacuation Wardens to complete a roll call to identify any persons unaccounted for.
4. Report all missing persons to Emergency Services.

### IN CASE OF FIRE

- R RESCUE** and relocate anyone in immediate danger.
- A ALERT** others by activating the building fire alarm.
- C CONFINE** the emergency by closing the doors.
- E EVACUATE** immediately. Do not use lifts. Use stairs.

### LEGEND



### ASSEMBLY AREA TOWNLEY STREET CAR PARK



Issue Date : March 2023  
Validity Date : March 2028