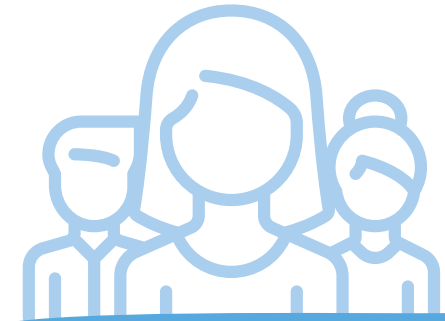


Stakeholder and Communications Engagement

Kelmscott District Centre Precinct Structure Plan

The project proposes the preparation and approval of a Precinct Structure Plan for the Kelmscott District Centre and supporting Town Planning Scheme No.4 amendment.

The Precinct Structure Plan will help guide the future planning and development for the Centre and will be supported by strategies to facilitate the desired outcomes. Input from residents, businesses and community groups is integral to the project.



We will know our plan is working when you...

What you can expect of us...

In all aspects of our work and interaction with the public we will:



Be available

Place-based town centre focus - Talk to you about living, working and playing in the Kelmscott District Centre, and how you see it looking in the future

Accessibility - Make sure we are easy to contact and our information is straightforward and available in a variety of different ways

Flexibility - Respect the way you want to work with us, and adapt our approach



Speak and listen

Active listening and understanding - Listen to and understand your views and ideas and respect different opinions

Honesty and transparency - Be honest about what's driving our priorities, what we can and can't promise to do, our timelines and why decisions have been made

Clarity and purposefulness - Be clear why and how we are engaging, making sure we give you real opportunities to influence and make a difference



Take action

Timely and proactive - Talk to the community as early as we can, responding quickly to issues and feedback

Consistency - Ensure we are consistent in the way we approach decisions

Closing the loop - Inform you about the outcomes of the project and if our plans change we will let you know when this happens and why

- Tell us we have communicated openly and honestly
- Are clear about what we do and how we can help
- Are open with us and tell us about your ideas and aspirations
- Trust us to do our jobs and to work with you
- Feel included and that your input is a part of the decision-making process

For more information:

Phone (08) 9394 5892

Email info@armadale.wa.gov.au

Visit www.armadale.wa.gov.au/community-consultation