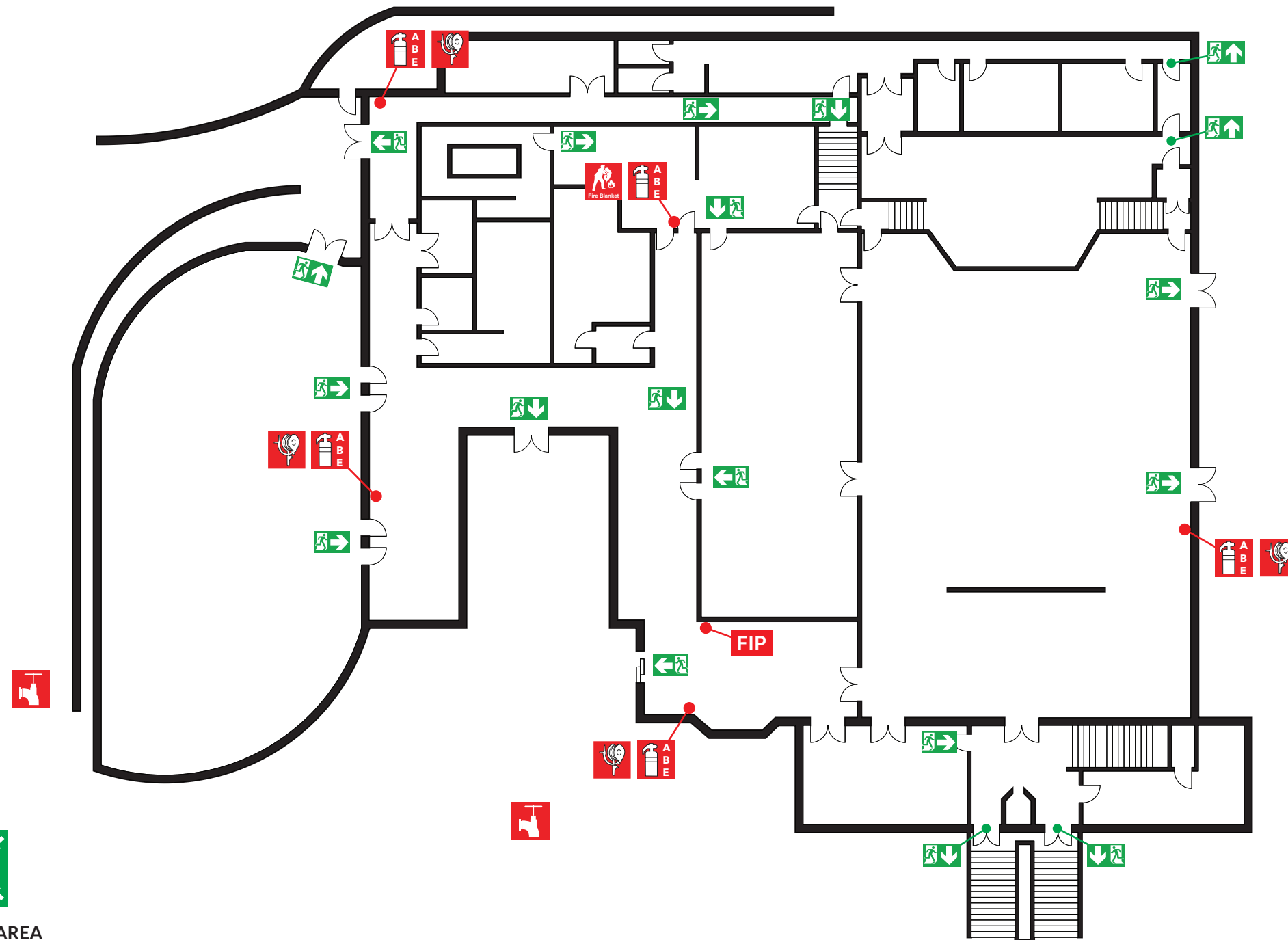











EVACUATION DIAGRAM

ARMADALE DISTRICT HALL, 92 JULL STREET, ARMADALE WA 6112




ASSEMBLY AREA
MAIN CAR PARK

LEGEND

								
FIRE EXTINGUISHER	FIRE BLANKET	FIRE HOSE REEL	FIRE HYDRANT	FIRE INDICATOR PANEL	ASSEMBLY AREA	EMERGENCY EXIT	EVACUATION ROUTE	ALTERNATIVE EVACUATION ROUTE

EVACUATION PROCEDURE

1. Removal of people from the immediate Danger Area. Occupants and staff in the immediate danger area are to assemble at the **ASSEMBLY AREA**. When the area has been evacuated, all doors and windows should be closed to contain the fire.
2. Complete evacuation of the building.
3. Evacuation Wardens to complete a roll call to identify any persons unaccounted for.
4. Report all missing persons to Emergency Services.

IN CASE OF FIRE

- R RESCUE** and relocate anyone in immediate danger.
- A ALERT** others by activating the building fire alarm.
- C CONFINE** the emergency by closing the doors.
- E EVACUATE** immediately. Do not use lifts. Use stairs.

ASSEMBLY AREA MAIN CAR PARK

