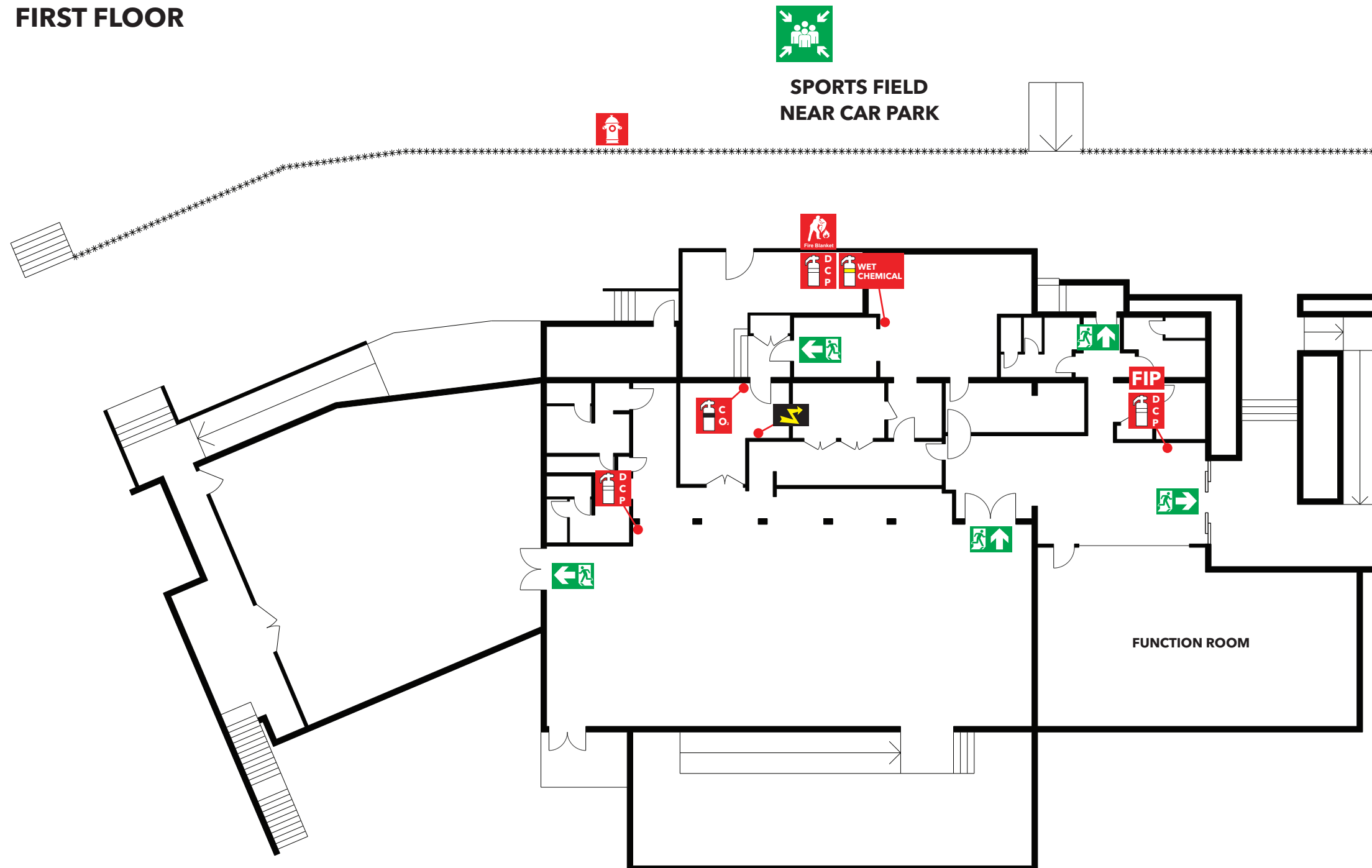


EVACUATION DIAGRAM

JOHN DUNN SPORTS GROUND (PAVILION) - 1363 THIRD AVENUE, KELMSCOTT WA 6111

FIRST FLOOR



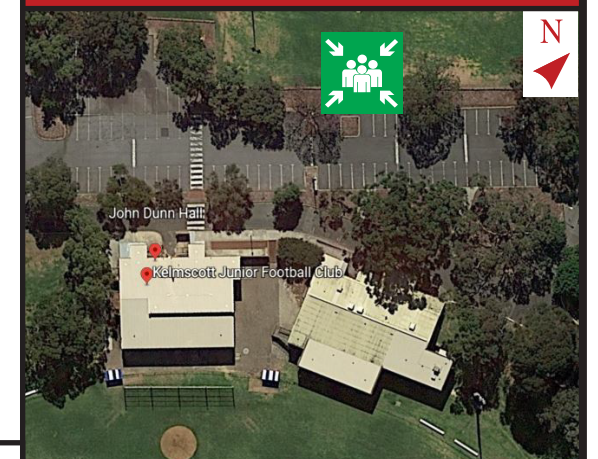
EVACUATION PROCEDURE

1. Removal of people from the immediate Danger Area. Occupants and staff in the immediate danger area are to assemble at the **ASSEMBLY AREA**. When the area has been evacuated, all doors and windows should be closed to contain the fire.
2. Complete evacuation of the building.
3. Evacuation Wardens to complete a roll call to identify any persons unaccounted for.
4. Report all missing persons to Emergency Services.

IN CASE OF FIRE

- R RESCUE** and relocate anyone in immediate danger.
- A ALERT** others by activating the building fire alarm.
- C CONFINE** the emergency by closing the doors.
- E EVACUATE** immediately. Do not use lifts. Use stairs.

ASSEMBLY AREA SPORTS FIELD NEAR CAR PARK



LEGEND

FIRE EXTINGUISHER	FIRE BLANKET	TWIN HYDRANT	SINGLE HYDRANT	FIRE PANEL	DISTRIBUTION BOARD	ASSEMBLY AREA	EMERGENCY EXIT	EVACUATION ROUTE	ALTERNATIVE EVACUATION ROUTE