

OUR COMMUNITY · OUR ENVIRONMENT · OUR CITY

City Views



7 **SAVE
THE DATE**
OUTSIDE THE FRAME
ART AWARDS

8-9 **TOP 10**
WINTER ACTIVITIES

15 **GET READY**
FOR STORM SEASON

ARMADALE - WHERE CITY MEETS COUNTRY

MAKURU 2025 // VOLUME 94

armadale.wa.gov.au

MAYOR'S Message

Welcome to the 94th edition of City Views.

The last couple of months have been very busy with both State and Federal elections occurring in quick succession. This meant meeting with candidates from every electorate and advocating for the City's priorities. Growth within the City of Armadale and the wider region saw the electoral boundaries adjusted and the City gain the new State seat of Oakford and the new Federal seat of Bullwinkel. The increase in the number of State and Federal elected members who represent the City of Armadale and region gives our growing population more of a voice.

Congratulations to both our State and Federal members for your recent wins, and we look forward to collaborating with you to ensure the residents in the City of Armadale are a priority. The City will continue to advocate for support and funding to deliver projects like the Armadale Regional Recreation Reserve, which will only become a reality if the City and State and Federal Governments work together to resource the project.

The City has also been busy hosting an array of sporting events, starting with the 'Every Woman Triathlon' at Champion Lakes. Next up was Perth Trail Series, hosting one of their regular 'Summer Series' events at Wungong Regional Park. Most recently, Rowing WA hosted the first of three major events at Champion Lakes – the Masters State Championships. All of these events were sponsored by the City, and it was wonderful to see so many athletes of all abilities and demographics spending their time recreating here. Events like these bring both new and returning visitors to the City, who in turn frequent our local cafes, restaurants and businesses. These visitors and events will continue to grow the City's reputation for sport and nature-based tourism.

Our event program is in full swing, with the Armadale Arts Festival a key feature every May. As part of the Festival, the prestigious Minnawarra Art Awards showcased the superb talent in the Western Australian art scene. In our 28th year of the awards, the artwork on display was exceptional and challenged our judges to choose the winners for our five awards.

You may have noticed hoarding and construction taking place around the City's building across from our Administration Centre. The City is hard at work refurbishing what will be the new Armadale University Study Hub. I recently attended a University Study Hub roundtable at UWA, which featured representatives from the City, and all the WA universities. This collaborative session reinforced how important the Armadale University Study Hub will be for our community, and we look forward to working with the five universities to bring this new education facility to life once the refurbishment is complete.

The City's tree canopy is still under threat by the invasive Polyphagous Shot Hole Borer (PSHB). Whilst our detections have been minimal compared to many other local governments, the PSHB is still a serious biosecurity threat. The Department of Primary Industries and Regional Development (DPRID) are leading the WA response and have been active throughout the City as they continually check trees across all our suburbs. Please report suspicious tiny holes or discolouration on tree limbs to DPIRD via the MyPestGuide app, calling (08) 9368 3080 or emailing padis@dpiird.wa.gov.au. By working together to support DPIRD, we can reduce the threat of this destructive beetle.

On behalf of the Councillors, enjoy the seasonal change as we leave the warmer months behind and enter the Noongar season of Makuru, and please take care on the roads when the rain finally arrives.

Kind regards,



Mayor
Ruth Butterfield

Acknowledgement of Country

Across the City of Armadale, the land on which we live, work and meet is Wadjuk Country. We acknowledge and pay our respects to Noongar people, the traditional owners and custodians of this land. We respect connection to Country, the importance of cultural heritage and embrace the knowledge of Elders past and present.

Cover image: Relive Imaging

Our City OUR COMMUNITY



Professionals Real Estate Bowls WA Open Gender Mid-week Pennants competition winners.

ROLEYSTONE COUNTRY CLUB

If you're looking for a friendly place to connect with others and get involved in local activities, the Roleystone Country Club is a great place to start. This much-loved community club has been running for 53 years and currently has more than 1,300 members, welcoming both locals and visitors from nearby areas.

Over the past year, they've hosted everything from family celebrations and community group catch-ups to festive events, corporate lawn bowls, and even a quiz night fundraiser for cancer research – and that's just the beginning! Plus, have you seen the view from the veranda?

Lawn bowls is as popular as ever, with several teams regularly taking part in both social and competitive matches. A recent highlight for the club was a hard-earned, promotion-securing, home green win in one of the mid-week competitions.

With 38 bowls members and plenty of healthy competition for places, it's clear the Roleystone Country Club has built a strong community culture enjoyed by many. It's a great example of how local clubs bring people together, support community events and create opportunities for connection, recreation and a sense of belonging.

Visit roleystoneclub.com.au, facebook.com/roleystoneclub or email club@roleystoneclub.com.au for more information.



LET'S CHILL ARMADALE!

More than 150 young people came together on Friday 28 March for Let's Chill Armadale!, a free, inclusive youth event full of fun and connection. The afternoon featured something for everyone, with activities like a silent disco, photo booth, glitter body art, craft, games, and a games truck.

Free food was on offer throughout, and eleven local youth-focused services hosted information stalls with engaging activities, alongside six City of Armadale teams who showcased the support and services available to young people.

Thanks to everyone who joined us for such a wonderful event.

LET'S CONNECT EXPO

This year's expo brought together over 400 attendees and 80 stallholders across nine key service areas.

The event was a vibrant hub of community connection, offering valuable support, resources, and networking for all who attended. Hundreds of free pancakes and sausages were served throughout the day, keeping all attendees well-fed.



CELEBRATING HUMANS OF ARMADALE

Community - Volunteering

Humans of Armadale brings powerful, real-life stories to the forefront. Stories locals can connect with, be moved by, and take inspiration from. This vibrant collection celebrates the incredible spirit of community volunteers across our City.

In collaboration with Centre for Stories, it shines a light on the rich heritage, culture, and diversity throughout Armadale. Recorded on Whadjuk Noongar boodjar, the project honours the traditional custodians and first storytellers of this land. Through 22 interviews, residents share their personal journeys of giving back and making a difference through volunteering in our community.

To listen to our volunteer podcast interviews visit engage.armadale.wa.gov.au/humans-of-armadale-2025

WHAT'S GOING ON

IN OUR COMMUNITY



BECOME A

Community Champion

The City's Growing Our Neighbourhoods program supports safer, more connected and vibrant communities. Community Champions are local residents who volunteer their time to help create clean, friendly and family-focused neighbourhoods.

The role is flexible and open to everyone, and you can be involved as little or as often as you like. Champions can promote safety, encourage neighbourly connections, and organise simple gatherings like BBQs or games nights. Volunteers are also invited to attend City-run events and free training.

The City may offer a rebate of up to \$100 to help you organise a community event in your neighbourhood.

Interested? Contact our Community Development Team via info@armadale.wa.gov.au
Everyone is welcome and diversity is encouraged and celebrated.



Photo credit: Perth Trail Series.

TRAIL RUNNERS TAKE ON

Wungong's rugged terrain

On Sunday 9 February 2025, Wungong Regional Park came alive as hundreds of runners hit the trails for the final race in Perth Trail Series' summer series. Sponsored by the City, this popular event welcomed participants of all ages and abilities to take on 5.2km, 10.5km or 15.6km courses through Wungong's stunning gorges.

The grassroots race series has featured Wungong since 2012, with Race Director Melina Mellino calling it a "hidden gem" and praising its role in promoting healthy, active lifestyles and environmental care.

Mayor Ruth Butterfield said, "The City has so much nature-based tourism to offer, and we are proud to support an event that brings in people from all over Perth to spend a morning enjoying our beautiful trails."

Perth Trail Series runs around 90 events each year, many of which are free and community-focused, including clean-ups and social runs. It's more than just racing – it's about building community and connecting people to nature.

Photo credit: Triathlon WA/Patrick Boere Photography.



EVERY WOMAN TRIATHLON

The Every Woman Triathlon returned to Champion Lakes on Sunday 9 March 2025, drawing a record 570 participants. This empowering, City-sponsored event featured races for all ages and skill levels, including the Kids Triathlon, Mini, Enticer, Long Triathlon, and 5km Fun Run.

With a focus on engaging women and girls in triathlon, the event also welcomed men and boys to join in through the Fun Run and Duathlon options. The Champion Lakes Regatta Centre proved to be the perfect triathlon venue, offering a flat, safe course with scenic views.

Hills Ward Councillor Sarah Stoneham attended the event, proudly presenting medals to athletes crossing the finish line. Triathlon WA's dedication to creating an inclusive, empowering environment for participants was enjoyed by all throughout the day.



NEW GUIDE

New Adventures

There's a whole world waiting just beyond your doorstep – and the updated Armadale Regional Guide is your invitation to discover it all. From sunrise hikes along the Wungong Gorge to tranquil yoga sessions at Kookaburra Yoga, the guide is packed with fresh ideas, local secrets, and breathtaking experiences.

Whether you're seeking outdoor adventures, peaceful getaways, or the best local eats; this guide brings it all to life.

New adventures. Local gems. All in your own backyard. Grab your free copy today at the Perth Hills Armadale Visitor Centre, 40 Jull Street, Armadale.

CELEBRATING

Cultural Inclusion

The Western Australian Multicultural Awards 2025 were held on Friday 14 March at the Ritz Carlton in Perth, honouring individuals and organisations that champion diversity, inclusion, and cultural harmony across the state.

Hosted by the Office of Multicultural Interests, the awards featured a range of categories recognising the contributions of those working to strengthen multiculturalism and support culturally and linguistically diverse (CaLD) communities in WA.

The City of Armadale was proud to be named a finalist in the Local Government Award category, recognising our commitment to inclusion through the work of the Multicultural Advisory Group (MAG). The MAG is made up of passionate community members from diverse backgrounds who collaborate with the City to help shape programs, events, and initiatives that reflect and support our growing multicultural population.

Mayor Ruth Butterfield represented the City at the awards and was joined by a MAG member on the night. While the City didn't take home the award, the event was a valuable opportunity to celebrate the outstanding work being done across WA to foster stronger, more inclusive communities—and to reflect on the impact of our own local initiatives.

Congratulations to the Shire of Harvey, who received the Local Government Award for their work in the multicultural space. The City looks forward to continuing our efforts to support and empower our multicultural community through collaboration, celebration, and connection.

COMMUNITY GRANT

Recipients

The City provides financial assistance to recognise and assist individuals, and to organisations that provide services and support to residents of the City of Armadale, in accordance with our Financial Assistance Policy.

Check out our most recent community grant funding recipients at my.armadale.wa.gov.au/service/community-grants-and-donations

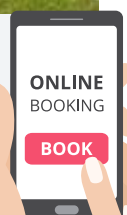
END CAR THEFT

Motor vehicle theft affects everyone. Help protect your car by locking doors and windows, keeping keys secure, removing valuables, and parking in well-lit areas. You can also fit anti-theft screws to your number plates and never leave keys in your car!



BOOKABLE

Do you have an event coming up? Visit armadale.bookable.net.au and explore all the City-owned venues available for hire.



ARTS



'The Search Continues', with artist Carla Adams.

MINNAWARRA

Art Awards

Now in its 28th year, the Minnawarra Art Awards showcases some of the best Western Australian artists and features a curated exhibition as the centrepiece of the Armadale Arts Festival.

This year's curated exhibit was on display in the Kim Fletcher Gallery at Armadale District Hall, where invited guests and artists were able to view the artworks before the official awards were announced.

Mayor Ruth Butterfield said: "The Minnawarra Art Awards continue to showcase an exceptional range of artworks from across Western Australia. Congratulations to all exhibitors and our deserving winners. We are proud that these awards always provide a high-quality arts experience for our community to enjoy."

WINNERS:

City of Armadale Art Award

Intrigue

By Charmaine Ball

Gerry Gauntlett Award

The Search Continues

By Carla Adams

Aboriginal Artist Award

Wunda

By Brett Nannup

Local Artist Award

Macro

By Leesa Padgett

Highly Commended

Grasping For What's Still Available

By Holly O'Meehan

More information about the artists and their work will be available via armadaleartsfestival.com.au

Sponsored by



Mayor Ruth Butterfield with Charmaine Ball and her winning artwork, 'Intrigue'.



FOCUS PHOTOGRAPHIC COMPETITION

FOCUS ON ARCHITECTURAL GEMS

The award presentation for the winners of the FOCUS photographic competition's tenth anniversary was held at the Armadale Library on Friday 16 May. Hosted by Birtwistle Local Studies Library, the competition aims to capture present day historical reality whilst growing the photographic collection.

THE WINNERS:

Architectural Gems – Photograph Category:

1st Prize

Holy Cross by Michelle Lane

2nd Prize

New Court House Armadale WA by Victor Coules

3rd Prize

Champion Lakes by Weronika Moran

Architectural Gems – Drone Category:

1st Prize

The Narry by Brenton Simmons

2nd Prize

Early 5am Learning by Russell Floyd

Architectural Gems – Open pre-2000 Category:

1st Prize

Canning River Floods, Kelmscott c.1950 by Ali Lambert

2nd Prize

Birthday Party c.1965 by Wendy den Hollander

3rd Prize

Billing's Dairy with Gil, Judy Billings and Alan c.1948 by Elaine de Ruiter

Winners received prizes including cash and vouchers up to \$300, plus a professional print of their own winning image. Thank you to everyone who entered for the many quality images submitted, and for helping us to capture history for future generations.

EVENTS CALENDAR

WHAT'S ON IN AWESOME ARMADALE

ARMADALE YOUNG

WRITERS AWARDS

Entries closing Monday 30 June 2025.

Calling all aspiring young writers in our community – put pen to paper and enter the Armadale Young Writers' Awards!

This creative writing competition is open to all students from Year 3 to Year 12 who reside or attend school in the City of Armadale.

For more information and T&Cs, visit library.armadale.wa.gov.au/armadale-young-writers-awards

8-17 AUGUST

Outside The Frame Art Awards.

MEDITATION HOUR

Join us for an hour of peace where you will be guided through the entire journey, or you can simply let yourself be taken to a space of relaxation, letting go of all external sound. Free but bookings essential.

Monthly on the second Monday of each month, starting 9 June
1pm - 2pm
Armadale Library, Armadale

STEP INTO

Volunteering

Are you interested in volunteering but aren't sure how to get started? There are plenty of opportunities available and something for everyone. Learn about the different types of volunteer positions available and what is required to start volunteering and begin making a difference in your community. Bookings required.

Wednesday 25 June
11am - 12noon
Seville Grove Library, Seville Grove

TREE PLANTING

Join us for a free tree planting event. Everyone is welcome, no experience is needed and everything is provided. Drop in for an hour or stay all morning.

Saturday 28 June
9am - 12noon
Harber Park, Harber Drive,
Brookdale

NAIDOC FESTIVAL

This year's theme is The Next Generation: Strength, Vision and Legacy. Join us to celebrate the history, culture and achievements of Aboriginal and Torres Strait Islander peoples, featuring a smoking ceremony, children's hub, info stalls, live entertainment, giveaways and a free sausage sizzle.

Tuesday 8 July
10am - 3pm
Bob Blackburn Reserve, Seville Grove

THE ACTIVE8 PROGRAM

Active8 is a free, 8 week healthy lifestyle program for parents, carers, and children, offering expert guidance on physical activity, fussy eating, and nutrition. Register online.

Every Friday for 8 weeks, from 25 July
9.30am - 11.30am
Evelyn Gribble Community Centre,
Brookdale

OUTSIDE THE FRAME

Art awards

Evocative artworks by Perth's finest emerging high school artists. Featured mediums include painting, drawing, printmaking, sculpture, textiles, digital media, photography and mixed media. Free entry.

Opening night: Friday 8 August, 7pm
Exhibition: Saturday 9 - Sunday 17 August
11am - 4pm
Armadale District Hall



Find out more or book at my.armadale.wa.gov.au/events

WINTER ACTIVITIES IN *Armadale*



NARRY-OKE

Warm up your winter weekends with Narryoke at Ye Olde Narrogin Inne. Every Saturday night, the pub comes alive with karaoke fun, hearty meals, and free pool all day. Whether you're belting out ballads or cheering on mates, it's the perfect way to beat the winter chill.

- 📅 Every Saturday night from 8pm
- 📍 2 South Western Highway, Armadale
- 🌐 thenarry.com/events

SIX SEASON TRAILS

Makuru & Djilba

Join award-winning hiking specialists, The Hike Collective, for an early morning guided walk through Wungong Gorge through Makuru (the season of fertility), and Roley Pools Heritage Trails during Djilba (the season of conception).

- 📍 Wungong Gorge and Roley Pools
- 🕒 Walks are between 2-3 hours
- 🌐 hikecollective.com.au



FROM GRAIN TO GLASS

at McRobert Distillery

Experience the McRobert distilling process by attending one of the tours and tastings to see firsthand the combination of traditional and modern methods of mashing, fermenting and distilling. Bookings are essential.

- 📍 Shop 1/2870 Albany Hwy, Kelmscott
- 💰 \$10/person
- 🌐 mrobertdistillery.com.au



READING CINEMAS

Escape the rain, grab some popcorn, sit back, relax and enjoy the latest blockbuster in comfort. Whether it's a romcom, action thriller or something for the kids, Reading Cinemas will keep the family entertained.

- 📍 Armadale Central Shopping Centre, Armadale
- 🌐 readingcinemas.com.au



STARGAZING

at Perth Observatory

Winter skies are crystal clear—perfect for discovering the cosmos! Join expert-guided night sky tours at WA's oldest observatory, just a short drive from Armadale. Dress warm and book ahead!

📍 337 Walnut Rd, Bickley

🕒 Monday - Thursday 10.30am - 4.30pm, Sunday 1pm - 4pm

🌐 perthobservatory.com.au



NAIDOC WEEK

Celebrations

Celebrate Aboriginal culture and connection to Country with storytelling, dance, music, and art. Hosted at The Champion Centre, local libraries and community hubs across the City.

📅 Sunday 6 - Sunday 13 July

📍 Various locations, City of Armadale

🌐 my.armadale.wa.gov.au/events



NOVELNIBBLES

Sip tea and talk books in this cosy monthly book club for visitors and locals alike. No bookings required.

📅 Tuesday 10 June, 8 July, 12 August, 10.30am - 11.30am

📍 Kelmscott Library, Stargate Shopping Centre, Kelmscott

🌐 library.armadale.wa.gov.au/whats-on



OUTSIDE THE FRAME

Art Exhibition

Discover Perth's emerging artistic talents at this showcase of contemporary art, featuring over 100 thought-provoking works.

📅 Friday 8 - Sunday 17 August

📍 Armadale District Hall, Armadale

🌐 my.armadale.wa.gov.au/events



PINK CAFÉ

School holiday crafts for kids

Pop along to the Pink Café in the second week of the July School Holidays for cupcake decorating, jewellery making and crafts. Mums and Dads can enjoy a quiet coffee and cake while the kids are entertained.

📅 Tuesday - Friday, 7am - 3pm

Saturday - Sunday, 7am - 2pm

📍 The Pink Café, 1 Melody St, Kelmscott



COSY WEEKENDS

in Tudor style

Experience charm and comfort at Armadale House, a modern B&B with a distinctive Tudor-style exterior, echoing the heritage of Armadale, WA. Recently refurbished, it's the perfect base to explore the Perth Hills. Extend your stay and unwind in style.

📍 3136 Albany Highway, Mt Nasura

📞 Contact Marielle on 0481 587 562

TOURISM & ECONOMIC Development



Photo credit: DGD Photography/Rowing WA

ROWING WA CHAMPIONSHIP SERIES

Returns to Champion Lakes

Champion Lakes Regatta Centre is set to host Rowing WA's top events once again in 2025, with four exciting days of racing scheduled across May, August and September.

The series kicked off with the WA Masters State Championships on Saturday 3 May, where Hills Ward Councillor Scott Mosey represented the City and presented medals to athletes, including one remarkable competitor in his 90s!

As a proud event sponsor, the City welcomes the thousands of competitors and spectators these events bring to the area.

Rowing WA CEO Daniel Tackenberg said, "It's fantastic to be partnering with the City of Armadale once again to bring this suite of Championship regattas to the Armadale region. Across these four days of racing, thousands of participants and spectator will descend on the local area, utilising local amenities, supporting local businesses and experiencing what the City of Armadale has to offer."

Next up is the All Schools State Championships on 9 August, followed by the WA State Championships on 13 and 14 September – likely to once again feature athletes who've represented Australia on the world stage.

Spectators are welcome! Visit rowingwa.asn.au for event details.

SUPPORT OUR LOCAL

Businesses

When you choose a local business, you are supporting your neighbours and boosting the local economy.

The City of Armadale has created a free Local Business Directory. It's a handy guide to great shops, services, and places to eat nearby – from cosy cafés to skilled tradies and unique boutiques.



Scan the QR code or visit my.armadale.wa.gov.au/service/Business/business-directory-for-local-businesses

BRINGING HIGHER EDUCATION CLOSER

to suburban communities

The City of Armadale recently partnered with UWA to host the Suburban University Study Hubs (SUSH) WA Roundtable, bringing together universities, local governments and community partners to strengthen collaboration and improve access to higher education.

SUSH aims to support students in suburban and regional areas who face barriers such as distance and connectivity. Among the first 14 national hubs announced in November 2024 are

new sites in Armadale, Ellenbrook and Mandurah.

The roundtable explored ways to build partnerships, share best practices, boost student engagement and raise awareness. Key representatives from WA universities, study hubs, and the City of Armadale attended, along with special guests Hon Dr Tony Buti MLA and Mayor Ruth Butterfield.

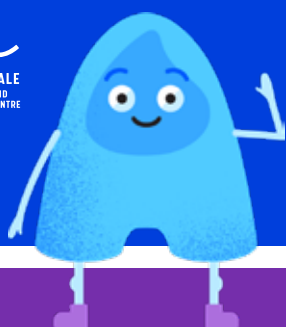
The Armadale University Study Hub is set to open in July 2025 at 145 Jull Street, offering a local space for students to connect, study and succeed.



Mayor Ruth Butterfield and
Hon Dr Tony Buti MLA.

ARMADALE FITNESS & AQUATIC CENTRE

Active
ARMADALE
FITNESS AND
AQUATIC CENTRE



WE NEED YOUR VOTE

Have you visited us at AFAC and experienced our awesome staff and facilities? We'd love your vote in AUSactive's People's Choice awards.



NO REGISTRATION IS REQUIRED.
Simply scan and click 'VOTE' before Monday 16 June!

Discover the magic of our Active Bubs Playgroup

Our fun, safe, and nurturing baby swim classes are a new kind of playgroup for 3 to 6-month-olds.

The Active Bubs Program grows with your child, supporting every developmental milestone and making the perfect introduction to swimming with a focus on water familiarisation, safety, and fun. Connect, play, and explore with your little one while creating precious memories in the pool.

Spots are limited – visit active.armadale.wa.gov.au/swim-school to enrol today.



Upcoming Events at AFAC

Want to stay up to date with everything going on at Armadale Fitness and Aquatic Centre?

Check out active.armadale.wa.gov.au/upcoming-events to see what's happening.

New Group Fitness timetable

Have you checked out our updated Group Fitness timetable?

It's live now – find it at active.armadale.wa.gov.au/health-fitness-timetable



BIOSECURITY ALERT

POLYPHAGOUS SHOT-HOLE BORER

Become a biosecurity warrior and keep your eye out for signs and symptoms of the invasive Polyphagous Shot Hole Borer (PSHB).

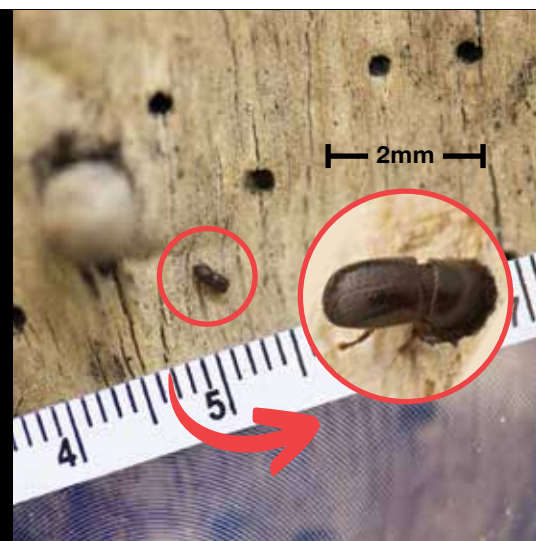
While you're in your gardens check your plants and trees for signs like shot holes and staining. Looking at wound points or areas where limbs have been removed can be a good spot to check as PSHB goes for easy entry points.

REPORT suspected PSHB damage

- Q Inspect your trees for symptoms of PSHB
- Q Take photographs of anything suspicious
- Q Include a pen or a ruler in your photographs for scale

Report any suspected damage using **MyPestGuide® Reporter** app, online via agric.wa.gov.au/apps/mypestguide-reporter, or via the DPIRD Pest and Disease Information Service on (08) 9368 3080.

Visit engage.armadale.wa.gov.au/borer for more information.



Department of
Primary Industries and
Regional Development

ENVIRONMENT *and* SUSTAINABILITY

URBAN FOREST

Annual tree planting

It's simple to underestimate the significance of trees in our daily lives and the many advantages they give us. They provide shade, enhance our mental health, increase the value of your house, and improve the quality of the air we breathe by filtering it with their leaves. They soften and green our streets, giving them a beautiful appearance.

Planting season is June to September each year, so over the next few months, you'll see our Urban Forest crew out and about planting trees for the program.

Do you want a tree planted in your verge?

Didn't receive a letter saying you're getting one?

Visit engage.armadale.wa.gov.au/verge-tree-request for more information on this important program.

GARDEN FOR FROGS

With the release of the Frog Pond Packs at our recent Plants for Residents event, we've had lots of residents asking how to create the perfect frog-friendly habitat at home.

This handy guide is packed with tips on how to design, build, and maintain your very own backyard frog pond, courtesy of the South East Regional Centre for Urban Landcare.

Creating a frog pond not only brings the soothing sounds of nature to your garden but also helps support local frog species and the wider ecosystem.



Scan here to check out the guide

sercul.org.au/wp-content/uploads/2017/10/GardensforFrogsinPerth.pdf

BUNURU WORKSHOPS

During a warm March evening, Armadale Gosnells Landcare Group (AGLG) held the Bunuru Kids Workshop, an event aimed at sharing Noongar culture with our younger generation.



Local Noongar educators Chloe and Adrian brought their knowledge and passion for arts and traditional tool making, captivating kids and parents who were all eager to learn and get involved.

Everyone was mesmerised listening to stories and watching Balga sap and kangaroo poo exposed to the heat of fire - and turned into very effective glue for holding sharpened stones to sticks. The kids also unleashed their imaginative energies with many colourful, artistic creations.

The kids also enjoyed some of Adrian's delicious kangaroo stew, a perfect way to wrap up this fun evening event.

Our thanks go to both the State Natural Resource Management Program WA and Community Bank Roleystone-Karragullen for funding this event.



ARMADALE GOSNELLS

Landcare Group

Everyone is welcome at AGLG events and no prior experience is necessary. Come for an hour or a whole event.

Visit aglg.org.au/events to see what's coming up.



WASTE



GIVE YOUR BROKEN ITEMS A SECOND LIFE

at Waterwheel Community Shed

Do you have pre-loved items at home in need of repair? Before you throw them out or replace them with a new version, consider a visit to the Waterwheel Community Shed in Bedfordale.

Repair culture is an important aspect of the Circular Economy, which seeks to keep valuable materials and resources in use (and out of landfill) for the longest possible time. The repair shop, operated by Waterwheel Community Shed volunteers, seeks to bring back a culture of repair into the community at a modest price. Items requiring repair are assessed and a quote provided for repairs, including materials if needed.

In 2021, Australians generated an estimated 2.95 tonnes per person* of waste material, some of which represents lost opportunities to contribute to a 'no waste' Circular Economy.

President Henry Zelones said, "Visiting our Saturday Repair Shop benefits the Community, planet and your pocket."

Open on Saturdays 8.30am - 12 noon at 2 Waterwheel Rd, Bedfordale or visit waterwheelshed.org.au to learn more. New members are welcome.

*source: Australian Bureau of Statistics



FUROSHIKI

with Nami Osaki

Back in February, Japanese artist Nami Osaki hosted a Furoshiki workshop at Seville Grove Library as part of the City's Frugal February workshop series.

Participants learned how to create eco-friendly carry bags, with Nami guiding them through both traditional and modern Japanese cloth gift-wrapping and carrying techniques. Nami's main goal is to promote sustainability and reduce waste by giving old textiles a new life. A win for the environment and your wallet.

"This workshop has inspired my daughter and I to become more creative with what we already own, and purchase more thoughtfully as well", a participant added.



LANDFILL FIRES ON THE RISE

How you can help

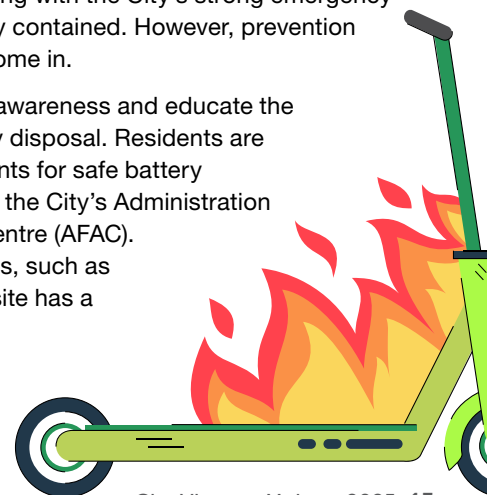
Lithium-ion batteries have become a growing concern across WA, with improper disposal leading to an alarming rise in landfill fires. In 2024 alone, WA recorded 81 lithium-ion related fires – up from just 21 in 2018.

These batteries, commonly found in everyday items like electric toothbrushes, children's toys, e-scooters and e-bikes, can spark fires when disposed of incorrectly in general waste or recycling bins. Once compacted or crushed in landfill, they pose a serious risk to public safety and the environment.

Thanks to the swift response of Department of Fire and Emergency Services (DFES) and dedicated volunteer fire crews, along with the City's strong emergency planning, recent landfill fires have been quickly contained. However, prevention remains the best defence. That's where you come in.

The City of Armadale is working hard to raise awareness and educate the community about the risks of incorrect battery disposal. Residents are encouraged to use the City's free drop-off points for safe battery disposal. Household batteries can be taken to the City's Administration Building and Armadale Fitness and Aquatic Centre (AFAC). For larger items containing lithium-ion batteries, such as electronics and appliances, the City's landfill site has a designated e-waste drop-off area.

Together we can protect our community, our emergency services personnel, and the environment from the dangers of landfill fires.



RANGER & EMERGENCY SERVICES



DOGS' DAY OUT

The first Sunday in May saw Kelmscott's Creyk Park become the place to be for the dogs of Armadale and their families.

The best dog trick competition had the crowd smiling as clever pups showed off their skills, while the best dressed dog contest brought out some seriously cute (and creative) outfits. Plus, the free showbags packed with goodies to help keep pets happy and healthy were a hit.

Alongside all the fun, the event shared some great info on being a responsible pet owner. Experts were on hand with tips on training, nutrition and keeping pets in top shape. Local rescue groups were there too, spreading the word about adoption and what it means to give a pet a forever home.

It was a great day out and wonderful to see so many smiling faces and wagging tails. A lovely way to celebrate our four-legged companions.



KEEP SCHOOL ZONE SAFE

Unlawful parking around schools puts children, pedestrians, and other road users at risk. Drivers play a key role in keeping school zones safe by parking legally and being mindful of others.

Safety concerns in and around schools

- 🚗 Cars parked or stopped on footpaths, obstructing safe pedestrian movement
- 🚗 Vehicles blocking driveways, restricting access
- 🚗 Stopping in designated 'no stopping' areas and speeding in school zones, endangering children and pedestrians
- 🚗 Parking on median strips, creating safety concerns for all road users

What can parents do?

- 🚶 Walk or cycle to school when dropping or collecting children
- 🚶 Park nearby and walk to the school
- 🚗 Carpool yours and your friend's children
- 🚗 Plan your trip to arrive prior to peak pick up times
- 🚗 Always be aware of children and pedestrians
- 🚗 Check the signage and be aware of parking restrictions



BURN SMART

Planned burning is an effective and safe way to reduce bushfire risks. By clearing excess fuel, it protects lives and property while preserving the environment, but it must be done safely.

The Burn SMART Guide emphasises these key steps:

- 🔥 Plan ahead and develop a fuel management strategy, identify burn patches and notify your neighbours of your intent to burn no less than four days prior to burning.
- 🔥 Prepare your burn site and check local restrictions, create and clear firebreaks, test water sources and ensure equipment is functional.
- 🔥 On the day of your burn, check weather forecast, ensure there are no fire bans, check wind speeds and register your burn with DFES.
- 🔥 Supervise your burn, keep firefighting tools ready, ensure the fire is fully extinguished and monitor the area after the burn.

Scan the QR code to check out DFES's Burn SMART Guide or visit dfes.wa.gov.au/documents/BurnSmart_Guide_2021.pdf



Set Down and Pick Up Zones (Kiss and Drive)

Pick Up and Set Down Areas (if provided) are designed to allow drivers a short length of time to pick up and set down children. When using the designated pick up and set down areas around schools, vehicles should never be left unattended.

By working together, we can ensure safer school zones for everyone.



WEATHER THE STORM

Key preparation tips

Storms are the most common natural hazard in Australia and can occur at any time of year, though, for us they occur more frequently between May and October.

Storms range in severity and can pass through fairly harmlessly or pose a significant threat to the community. Severe storms can impact communities with damaging wind, large hail, tornadoes and heavy rain that can cause flash flooding.

People who take action to get prepared for a severe storm before it happens are more likely to keep themselves, their families, their pets, and their property safe.

BE PREPARED

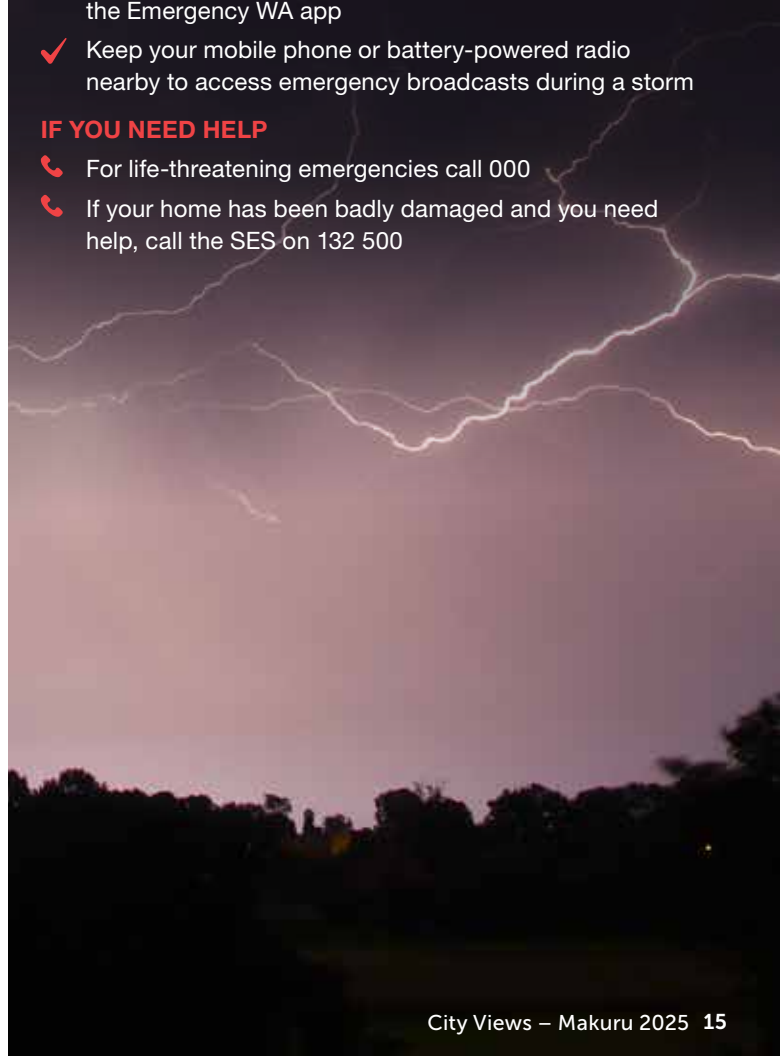
- ✓ Clean gutters and check your roof for cracked capping or loose tiles.
- ✓ Secure loose objects in your yard, such as outdoor furniture, toys, and gardening tools, to prevent them from becoming hazards.
- ✓ Trim overhanging branches near your property to reduce the risk of damage from falling debris during strong winds.
- ✓ Assemble an emergency kit with essentials like a torch, batteries, first aid supplies and a battery-powered radio.

KEEP UP TO DATE

- ✓ See the latest warnings on emergency.wa.gov.au or the Emergency WA app
- ✓ Keep your mobile phone or battery-powered radio nearby to access emergency broadcasts during a storm

IF YOU NEED HELP

- ☎ For life-threatening emergencies call 000
- ☎ If your home has been badly damaged and you need help, call the SES on 132 500





Team Quackacorn from Carey Baptist College with Officer in Charge at Armadale Police Station Paul Thornton and Mayor Ruth Butterfield.

CREATIVE TEENS TACKLE ROAD SAFETY

The City recently invited local young people to get creative for the Youth Road Safe Video Contest, encouraging them to share important road safety messages through short videos.

Sponsored by the Road Safety Commission and supported by WA Police, the competition highlighted the higher risks faced by young drivers, especially in their first few

years of holding a driving licence.

Mayor Ruth Butterfield visited the three winning schools to present awards and speak with students about their inspiring entries.

Congratulations to our winners:

Individual Award
John Wollaston Anglican Community School

Group Award
Team AESC, Armadale Education Support Centre

Mayor's Choice Award
Team Quackacorn, Carey Baptist College

Keep an eye on the City's Facebook page as we share a selection of these fantastic youth-created videos in the coming months.

your COUNCIL



MAYOR



Mayor
Ruth Butterfield

HERON WARD



Cr Michael
Hancock



Dr Caroline
Wielinga

HILLS WARD



Cr Sarah
Stoneham



Cr Scott
Mosey

LAKE WARD



Cr Sartaj
Virk



Cr Michelle
Silver

MINNAWARRA WARD



Cr Kerry
Busby



Cr Gary
Smith



Cr Paul
Hetherington



Cr Laurie
Sargeson

RANFORD WARD



Cr Shanavas
Peter



Cr Keyur
Kamdar

RIVER WARD



Deputy Mayor
Cr John
Keogh



Cr Jibby
Joy

COUNCIL MEETINGS

Council Meetings are held in the Council Chambers, and Committee Meetings in the Committee Room, both at the City of Armadale Administration Building, 7 Orchard Avenue, Armadale. Council Meetings can be streamed live via [youtube.com/CityofArmadale](https://www.youtube.com/CityofArmadale)

CITY OF ARMADALE

Administration Centre: 7 Orchard Avenue, Armadale WA 6112

[armadale.wa.gov.au](https://www.armadale.wa.gov.au) | (08) 9394 5000 | info@armadale.wa.gov.au

Information correct at time of printing 16/05/2025

This publication is available in digital format and can be issued by email or found on our website. Other formats such as audio, large print or braille are available upon request. For more information or to request an alternate format please email info@armadale.wa.gov.au

