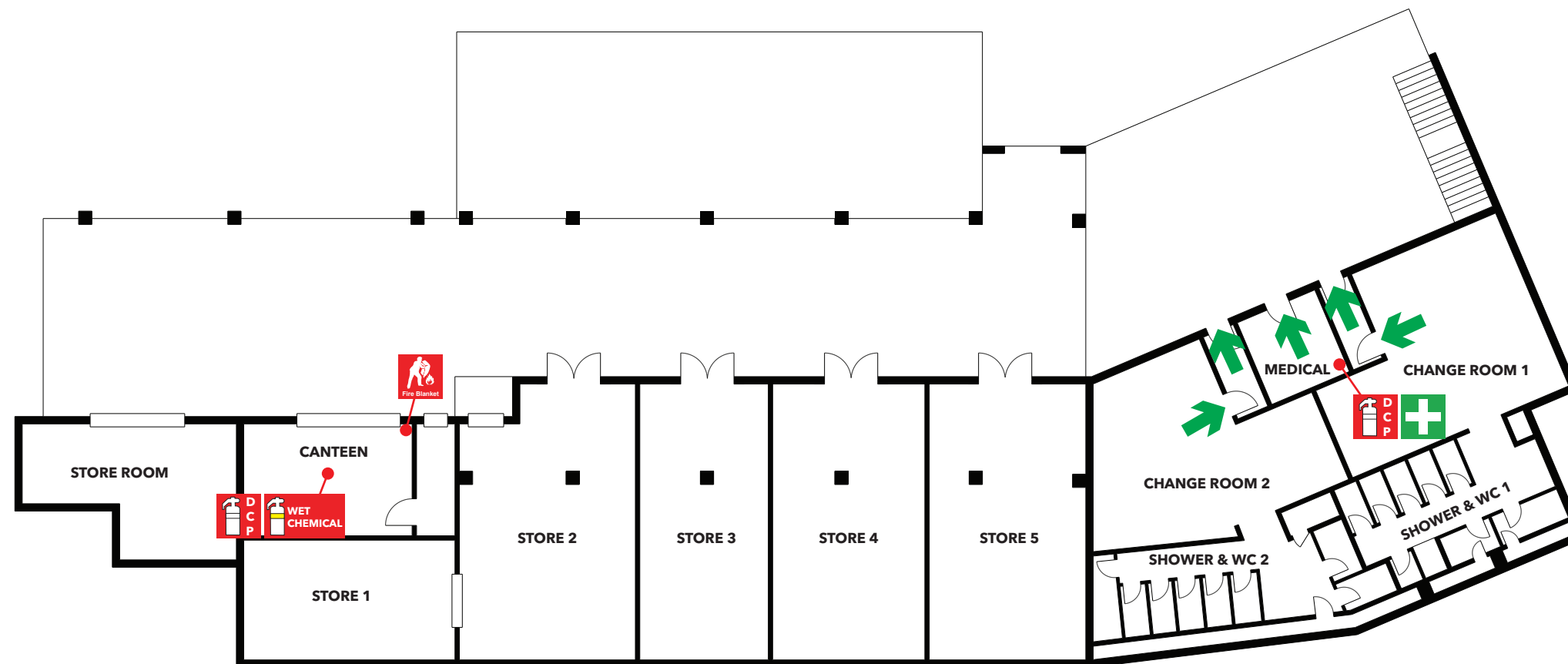


EVACUATION DIAGRAM

JOHN DUNN SPORTS GROUND (PAVILION) - 1363 THIRD AVENUE, KELMSCOTT WA 6111

GROUND FLOOR



SPORTS FIELD
NEAR CAR PARK



LEGEND



FIRE
EXTINGUISHER



FIRE
BLANKET



FIRST
AID



ASSEMBLY
AREA



DISTRIBUTION
BOARD



EVACUATION
ROUTE

EVACUATION PROCEDURE

1. Removal of people from the immediate Danger Area. Occupants and staff in the immediate danger area are to assemble at the **ASSEMBLY AREA**. When the area has been evacuated, all doors and windows should be closed to contain the fire.
2. Complete evacuation of the building.
3. Evacuation Wardens to complete a roll call to identify any persons unaccounted for.
4. Report all missing persons to Emergency Services.

IN CASE OF FIRE

- R RESCUE** and relocate anyone in immediate danger.
- A ALERT** others by activating the building fire alarm.
- C CONFINE** the emergency by closing the doors.
- E EVACUATE** immediately. Do not use lifts. Use stairs.

ASSEMBLY AREA SPORTS FIELD NEAR CAR PARK

