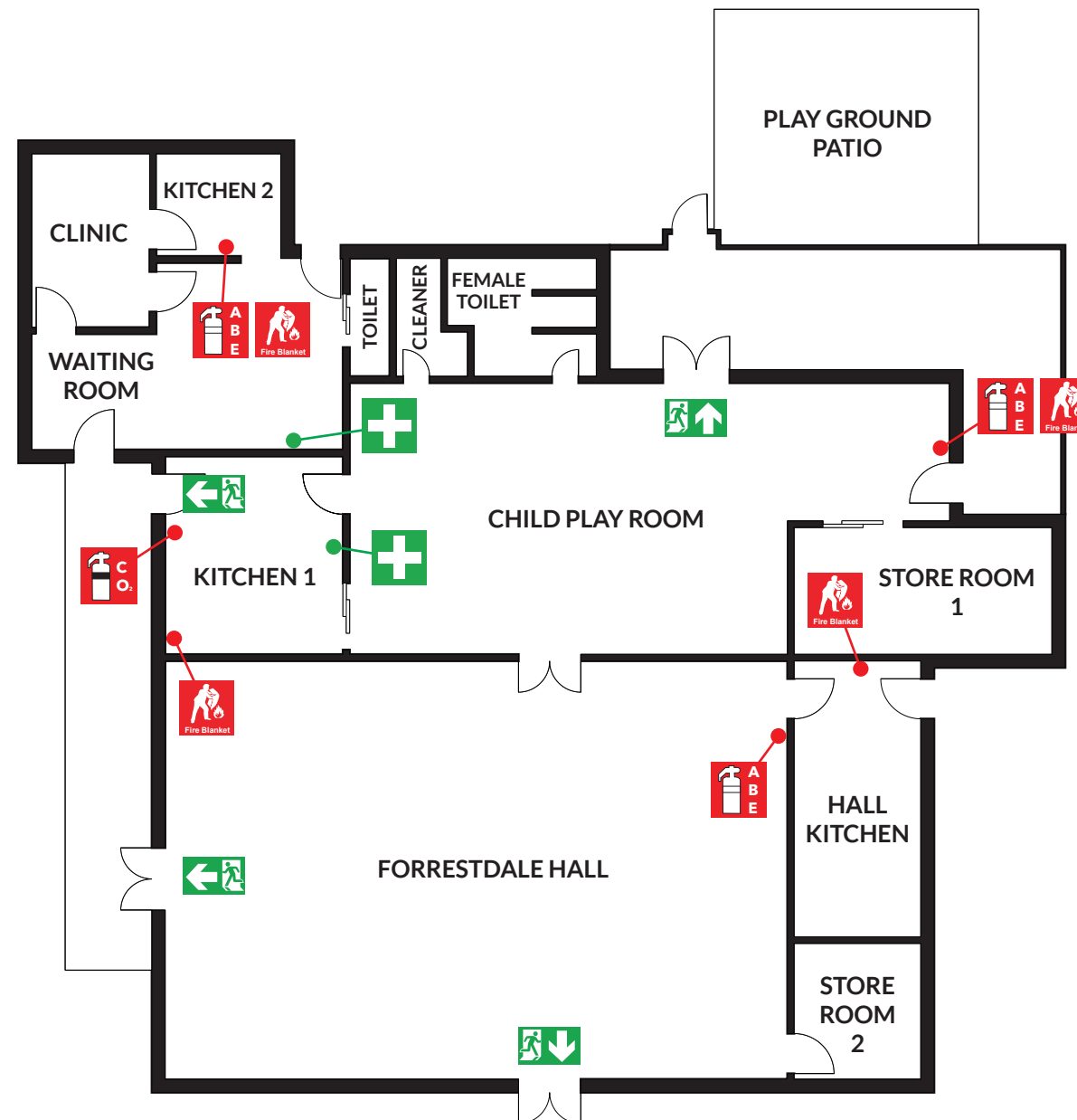
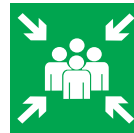


EVACUATION DIAGRAM

**FORRESTDALE HALL & CHILD CARE CENTRE,
3 WELD STREET, FORRESTDALE WA 6112**

ASSEMBLY AREA
CAR PARK



EVACUATION PROCEDURE

1. Removal of people from the immediate Danger Area. Occupants and staff in the immediate danger area are to assemble at the **ASSEMBLY AREA**. When the area has been evacuated, all doors and windows should be closed to contain the fire.
2. Complete evacuation of the building.
3. Evacuation Wardens to complete a roll call to identify any persons unaccounted for.
4. Report all missing persons to Emergency Services.

IN CASE OF FIRE

- R RESCUE** and relocate anyone in immediate danger.
- A ALERT** others by activating the building fire alarm.
- C CONFINE** the emergency by closing the doors.
- E EVACUATE** immediately. Do not use lifts. Use stairs.

ASSEMBLY AREA CAR PARK



LEGEND



FIRE
EXTINGUISHER



FIRE
BLANKET



FIRST
AID



ASSEMBLY
AREA



EMERGENCY
EXIT



EVACUATION
ROUTE



ALTERNATIVE
EVACUATION ROUTE



Issue Date : March 2023
Validity Date : March 2028