

OUR COMMUNITY · OUR ENVIRONMENT · OUR CITY

# City Views



**7** SPRING INTO  
ARMADALE

**13** FLORA  
FOR FUTURE

**15** BUSHFIRE  
PREPAREDNESS

ARMADALE - WHERE CITY MEETS COUNTRY

DJILBA 2025 // VOLUME 95

[armadale.wa.gov.au](http://armadale.wa.gov.au)

# MAYOR'S *Message*



## Welcome to the 95th edition of City Views.

It's been a busy and exciting few months for the City, with projects, events, and partnerships all contributing to the vibrancy of our community.

On Friday 25 July, we marked the official start of works on the Morgan Park Pavilion rebuild, where Councillors and City officers were joined by Hon Rita Saffioti and Hon Dr Tony Buti to inspect the site and turn the first sod. The existing 1970s facility has well and truly served its time, and the redevelopment will deliver a modern, welcoming space for both clubs and the wider community. The new pavilion will feature two main function spaces, each with its own kitchen, four change-rooms, universally accessible toilets, ample storage, and a new carpark. Once complete, the old pavilion will be removed, making way for a fresh hub that will become a focal point for local sport and community life. This part of the redevelopment will cost approximately \$5.8 million with \$5 million funded by the City and \$809,784 contributed by the Department of Creative Industries, Tourism and Sport. I would like to thank the Minister and WA Government for their support of this important project.

Spring is upon us, bringing with it the much-loved Spring into Armadale festival, which runs until 30 November. This celebration through the Noongar seasons of Djilba and Kambarang invites visitors and residents to explore our region's rich tapestry of culture, arts, food, wine and community spirit. From the spectacular Highland Gathering and the Perth Kilt Run to markets, concerts, and nature-based experiences, there's something for everyone. I encourage you to make the most of the season and

discover the unique events and natural beauty on offer right here in our City. You will find a snapshot of these exciting events from page 7.

At the start of August, we welcomed Mayor Glenn Docherty and senior staff from the City of Playford in South Australia, who were visiting Perth for the National Growth Areas Alliance (NGAA) Congress. The City of Armadale is an active member of the NGAA which brings together outer metropolitan growth councils from across Australia to share knowledge, collaborate on solutions, and advocate for the needs of our fast-growing communities. Our cities share many similarities—from rapid population growth to the challenges of balancing the provision of infrastructure and services without overly burdening ratepayers. This visit was an invaluable opportunity to exchange ideas, showcase our key projects, and strengthen ties with another council on a similar growth journey.

The Councillors and I wish you all the best for the coming months, and we hope to see you out and about enjoying the warmer weather, or at one of our many events soon.

Kind regards,

**Mayor**  
Ruth Butterfield

## *Acknowledgement of Country*

Across the City of Armadale, the land on which we live, work and meet is Wadjuk Country. We acknowledge and pay our respects to Noongar people, the traditional owners and custodians of this land. We respect connection to Country, the importance of cultural heritage and embrace the knowledge of Elders past and present.

Cover Image: NAIDOC Festival 2025  
7 to 1 Photography

# Our City OUR COMMUNITY

*A family affair: one game, three generations.*



**ROLEYSTONE**

**DIAMOND SPORTS CLUB**

**Since 1980, Roleystone Diamond Sports has been a key player in our local sporting scene, supporting players of all ages and bringing families together through sport.**

The club has grown significantly in that time, and now proudly offers tee-ball, machine pitch, baseball and softball for all ages and abilities. With 20 teams and around 240 players in the most recent season, community involvement in the club includes so many people every weekend - with coaches, scorers, umpires, team managers, club volunteers, parents and grandparents all helping to make game day special.

From first-time players to State-level representatives, Roleystone Diamond Sports is a place where talent is nurtured, fun is guaranteed, and family comes first. It's not uncommon to see teens playing, then cheering on their parents at their own games, helping coach, or even umpiring their siblings.

**If you're interested in giving diamond sports a go, why not reach out to the club before the summer season starts? Visit [roleystonediamondsports.com](http://roleystonediamondsports.com) for more information.**



## REMEMBERING IRENE AND MICHAEL MORCOMBE

**The City is saddened to share the passing of two much-loved and long-standing members of our community, Irene and Michael Morcombe, who passed away just three weeks apart in June and July 2025.**

Irene (née Davey) was born in Armadale in 1937, while Michael, born in 1938, moved here with his mother and sister in 1944 after the death of his father during World War II. They met and married in 1957, building their first home in Armadale and remaining in the Armadale/Bedforddale area for the rest of their lives.

Over 68 years together, Irene and Michael shared a deep passion for nature and the community, producing more than 50 publications on Australia's flora and fauna. In 1961, alongside Irene's father John Davey, they helped establish the Armadale-Kelmscott Wildflower Society. Irene went on to serve as an inaugural member of the Bungendore Park Management Committee in 1981, dedicating 30 years to the group and receiving recognition from the City in 2011.

Together, they were awarded honorary life memberships of the Wildlife Society of Western Australia in 2015. Michael was honoured with an AM "Member of the Order of Australia" in 2018 for his outstanding contributions to photography, illustration and writing. In 2023, Irene received a Lifetime Volunteering Service Award from the WA Department of Communities for more than 60 years of dedication to the Wildflower Society.

Irene and Michael's lives were defined by their commitment to the environment, their love of photography and publishing, and their tireless service to the community. Their legacy will continue to inspire for generations to come.



## COMMUNITY CITIZEN OF THE YEAR

### Nominations Open

Nominations are now open for the 2026 Community Citizen of the Year Awards. These awards aim to recognise and celebrate outstanding contributions of individuals and groups who demonstrate active citizenship within our local community. The four categories are Community Citizen of the Year, Young Community Citizen (16-30 years), Senior Community Citizen (65+), and Active Citizenship (for groups or events).

**Nominations close 31 October 2025. To nominate visit: [citizenshipawards.com.au/nominate](http://citizenshipawards.com.au/nominate)**



## WHAT'S GOING ON

# IN OUR COMMUNITY



## NATIONAL

## HOMELESSNESS WEEK

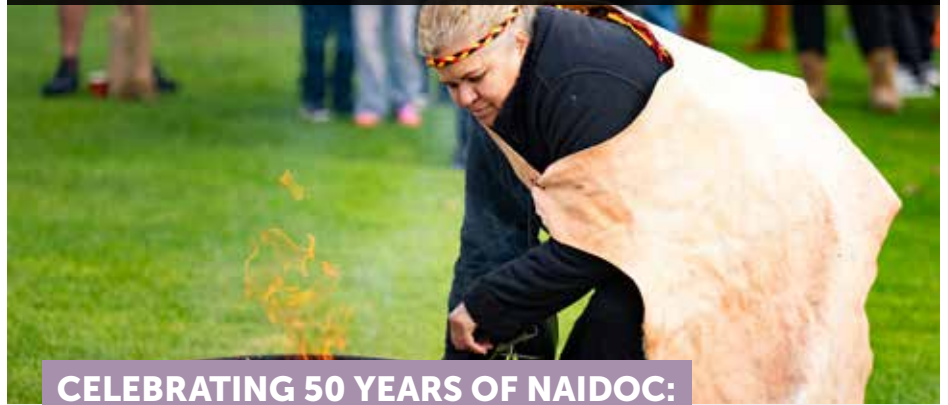
**The City has recognised National Homelessness Week since 2023. Held in the first week of August, the week raises awareness of the impacts of homelessness and the need for long-term, effective solutions.**

ABS Census data from 2021 shows that more than 9,700 people experience homelessness in WA on any given night. The causes are varied and complex, often linked to family and domestic violence, financial hardship, mental health challenges and a lack of affordable housing (Mission Australia, 2024).

To acknowledge this important week, the City produced a short video featuring local services such as 360 Health Street Doctor, Homelessness We Care and the City's Rangers, highlighting the support available in our community and how people can get involved or help others in need.



To see the video or find out more, scan the code.



## CELEBRATING 50 YEARS OF NAIDOC:

### *The Next Generation: Strength, Vision & Legacy*

**On Tuesday 8 July, the City proudly hosted its annual NAIDOC Festival, commemorating 50 years of recognising and celebrating the history, culture and achievements of Aboriginal and Torres Strait Islander peoples.**

This year's theme, The Next Generation: Strength, Vision & Legacy, reflects the spirit of the City's Champion Centre, a place of gathering, belonging and cultural connection.

The event honoured local Aboriginal Elders and featured performances and artworks from local creatives, celebrating culture while inspiring the next generation. NAIDOC Week began with a Makuru Middar-themed Elders, Dinner Dance, a walk down memory lane into the Coolbaroo era of the 1950s and 1960s in Perth.

The City acknowledges the Elders, families, community members and partner organisations whose contributions made this event possible. Their continued commitment plays a vital role in supporting cultural development, reconciliation and community wellbeing.

Mayor Ruth Butterfield said: "It's great to see how the City's NAIDOC celebrations have grown over the years. It's important people feel proud and acknowledged, and equally important for community cohesion that we have people of non-Aboriginal backgrounds at the event as well. To have 50 years of NAIDOC celebrations in Australia is a huge milestone. The City's first NAIDOC was marked by a small morning tea, but as awareness has grown so has our event. It's important to hold events like this so people can come out and learn more, and we look forward to these celebrations every year."

## NAIDOC WEEK

### *Planting*

**In celebration of NAIDOC week, the City came together with the Department of Communities WA to green up the space around Orchard House.**

A morning tea was shared after the planting, with a reflect and connect activity organised by the Department of Communities team. A huge thank you to everyone who joined to make it such a meaningful morning.





## HEALTH AND WELLBEING

### Programs

In the 2024-2025 financial year, our City's Health Services team delivered a range of community workshops, courses, clinics and programs aligned with our Community Health and Wellbeing Plan.

Over the year, the team ran 22 programs, 11 workshops, 8 courses and 1 clinic—totalling 261 hours and reaching 799 participants. These were made possible through partnerships with 18 organisations, with more collaborations planned for 2025–2026.



For more info, scan the QR code to subscribe to the City's monthly Health newsletter.

## COMMUNITY HEALTH AND WELLBEING PLAN

The City has published its third public health plan – the Community Health and Wellbeing Plan 2025–2030.

Aligned with the State Public Health Plan and meeting the requirements of the Public Health Act 2016, this plan outlines actions to help improve health and wellbeing outcomes for our community. It aims to support residents to live well and enjoy the best possible quality of life.



Scan the code to view the plan.



## COMMUNITY GRANTS

### Now Open

Do you have a great idea to support your local community? Round one of the City's Community Grants program is now open. Eligible groups can apply for funding to support events, activities or projects. Applications close 6 October.

Find out more and apply at:

[my.armadale.wa.gov.au/service/community-grants-and-donations](https://my.armadale.wa.gov.au/service/community-grants-and-donations)



## BOOKABLE

Do you have an event coming up? Visit [armadale.bookable.net.au](https://armadale.bookable.net.au) and explore all the City-owned venues available for hire.

ONLINE  
BOOKING

BOOK

## BLENDER BIKE

### for Hire

The City's Blender Bike is a fun, healthy way to promote active living, enabling our community to offer pedal-powered smoothies at local free or fundraising events.

Available for hire by schools, clubs and local groups, the bike was used by 24 organisations at 34 events across 21 suburbs in 2024–2025. In total, 3,098 smoothies were made, with one group even raising a huge \$750 at their event.

Interested in hiring the City's Blender Bike? Visit:

[my.armadale.wa.gov.au/service/blender-bike](https://my.armadale.wa.gov.au/service/blender-bike)



## EVENTS CALENDAR

# WHAT'S ON IN AWESOME ARMADALE



Armadale Highland Gathering and the Perth Kilt Run

## ARMADALE WRITERS'

### *Festival 2025*

Celebrate storytelling, creativity and conversation at our eighth annual week-long writers' festival featuring author talks, writing workshops and panels. Bookings are essential via [library.armadale.wa.gov.au](http://library.armadale.wa.gov.au) or (08) 9394 5125.

All City of Armadale Libraries  
Saturday 6 – Friday 12 September  
Times vary

## FITNESS

### *Fiesta*

Fitness Fiesta is BACK and this time we're going green in the name of sustainability. Dress up and join us for a morning of super-fun group fitness classes. Standard entry fees apply.

Armadale Fitness & Aquatic Centre  
Saturday 13 September  
From 8.15am



Let's Play

## STORY TIME:

### *Armadale*

Hear stories, sing songs and enjoy a craft activity together. These sessions encourage children's literacy skills to prepare them for school. No booking required.

Armadale Library  
Tuesday 16 September  
10.30 – 11am

## TECHNOLOGY BUDDIES

Do you need help with technology? Students from Dale Christian College will be able to assist you with your technology troubles. Any questions about your laptop, iPad, tablet, mobile phone or digital camera can be solved by these technology-savvy youngsters. No booking required.

Armadale Library  
Thursday 11 and  
Thursday 18 September  
10.15 – 11.15am

## LET'S PLAY

Join us for a fun day of free children's activities and entertainment, with information stalls providing support for parents and caregivers.

Memorial Park, Armadale  
Friday 3 October  
9am - 1pm

## ARMADALE HIGHLAND

### GATHERING &

### *The Perth Kilt Run*

Celebrate Scottish culture at Western Australia's largest Highland Gathering. Enjoy the Perth Kilt Run, pipe bands, Highland dancing, heavy events, clan displays, and a medieval fair. A fun-filled day for all ages. Register for the Perth Kilt Run via [perthkilttrun.com.au](http://perthkilttrun.com.au)

Minnawarra Park, Armadale  
Sunday 5 October  
8.30am – 4pm

## ACTIVE8 PROGRAM:

### *Harrisdale*

Active8 is a free, 8 week healthy lifestyle program for parents, carers, and children, offering expert guidance on physical activity, fussy eating, and nutrition. Booking required via [www.theactive8.org](http://www.theactive8.org)

Honeyeater House, Harrisdale  
Every Friday, 17 October – 5  
December  
9.30 - 11am



For information on all these events and more, please visit

[my.armadale.wa.gov.au/events](http://my.armadale.wa.gov.au/events)

# SPRING

into ARMADALE

1 AUG – 30 NOV 2025

Celebrate the seasons of  
Djilba and Kambarang



Celebrate all that's special about the Armadale region  
of the Perth Hills at the 2025 Spring into Armadale Festival.

EXPERIENCE  
PERTH  
HILLS  
ARMADALE

CITY OF  Armadale



## IT'S YATES SPRINGTIME AT ARALUEN 2025

📅 Friday 22 August - Sunday 5 October

🕒 9.00am - 5.00pm

📍 Araluen Botanic Park  
362 Croyden Rd, Roleystone

💰 Adult Weekday \$30, Weekend \$40  
Children \$20 (under 12 free)  
Concession Weekday \$20, Weekend \$25  
Group bookings available

🌐 [araluenbotanicpark.com.au](http://araluenbotanicpark.com.au)

The stunningly beautiful tulip displays in Araluen are a must-see this spring - discover the carpets of colour amongst the backdrop of the park with its history and flora and fauna.



## RAEBURN ORCHARDS SPRING BLOSSOM

📅 Monday 1 - Tuesday 30 September 🕒 9.00am - 5.00pm

📍 Raeburn Orchards, 4 Raeburn Rd, Roleystone

💰 Adult \$5, Children under 12 free 🌐 [raeburnorchards.com](http://raeburnorchards.com)

Spring in Raeburn Orchards is a season of renewal and breathtaking beauty, as stone fruit trees burst into full pink and white blossom providing a haven for photographers and nature lovers. Enjoy a gentle ramble through the orchard and picnic amongst the blossoms, be sure to make a visit to the packing shed to pick up fresh fruit and local goodies to take home, or grab a coffee and cake at Coffee@The Shed.



## PERTH HILLS WANDERFEST

📅 Friday 26 - Monday 29 September 🕒 3.30pm - 5.30pm

📍 Friday, Sunday and Monday at Armadale Settlers Common (Environmental Centre); Saturday at Bedforddale Hall 💰 \$30 🌐 [experienceperthhills.com.au/wanderfest](http://experienceperthhills.com.au/wanderfest)

The gentle 5km loop trail, nestled in the foothills of the Darling Scarp, offers a relaxed hiking experience. Explore the rich biodiversity of Settlers Common (East), where towering jarrah and marri trees provide shelter for a symphony of birdlife. Keep an eye out for bursts of wildflowers and grazing kangaroos.



## SPRING IN BEDFORDALE

📅 Wednesday 3 September - Sunday 30 November:

Wednesday - Sunday, closed Monday & Tuesday

🕒 Wednesday, Thursday, Friday 9.00am - 3.00pm;  
Saturday & Sunday 8.30am - 2.00pm

📍 Willow Springs Orchard, 408 Albany Hwy, Bedforddale

💰 Free event, food for sale 📍 Willow Springs Orchard

Want a wholesome day out in the Perth Hills? Head along to Willow Springs Orchard for farm fresh fruit and veg, coffee, food vans, face painting, playground for the kids and animals.



## ROWING STATE CHAMPIONSHIPS

📅 Saturday 13 - Sunday 14 September

🕒 8.00am - 5.00pm

📍 Champion Lakes Regatta Centre, Champion Lakes

💰 Free event for spectators, fees apply for participants

🌐 [rowingwa.asn.au](http://rowingwa.asn.au)

The 2025 Rowing State Championships will bring together Western Australia's finest rowing talent for a thrilling weekend of competition at Champion Lakes Regatta Centre. Head over to witness elite crews battle it out on the water in a showcase of strength, speed and teamwork.



## FAULTY TOWERS DINNER THEATRE SHOW

📅 Wednesday 15 October ⌚ 7.00pm  
 📍 Ye Olde Narrogin Inne,  
 Corner South Western Hwy & Albany Hwy, Armadale  
 💰 \$97 🌐 [interactivetheatre.com.au](http://interactivetheatre.com.au)

Fully immersive, highly interactive, and completely original. 70% of the show is improvised so it's never the same twice.



## ARMADALE SOCIETY OF ARTISTS 38<sup>TH</sup> ANNUAL AWARDS EXHIBITION

📅 Friday 24 - Sunday 26 October  
 ⌚ 10.00am - 4.00pm 📍 Armadale District Hall,  
 90 Jull St, Armadale 💰 Free event  
 🌐 [armadalesocietyofartists.com.au](http://armadalesocietyofartists.com.au)

An eclectic showcase of artworks by members of the Armadale Society of Artists. The exhibition provides an opportunity for all artists to share their passion and encourage art in the community.



## WILDFLOWER RAMBLE IN SETTLERS' COMMON EAST

📅 Sunday 12 October ⌚ 9.00am - 11.00am  
 📍 Observation Circle, Bedfordale 💰 Free event 🌐 [www.wildflowersarmadale.org.au](http://www.wildflowersarmadale.org.au)

Enjoy a wildflower ramble in part of the Settlers' Common – a highly important area of flora conservation, with 318 plant species and two 'Declared Rare' and 'Priority Flora' species.



## KELMSCOTT AGRICULTURAL SHOW

📅 Friday 17 October ⌚ 4.00pm - 9.30pm 📅 Saturday 18 October  
 ⌚ 9.00am - 6.00pm 📍 Rushton Park, River Rd, Kelmscott  
 💰 Check website for ticket prices 🌐 [kelmscottshow.com.au](http://kelmscottshow.com.au)

Experience the vibrant sights, sounds, and flavours of the 2025 Kelmscott Agricultural Show, a beloved community celebration showcasing local agriculture, community groups, arts, entertainment, and family fun. Held over two action-packed days, the show features thrilling rides, live performances, competitions, exhibitions, and something for everyone to enjoy, including the City of Armadale Fireworks Spectacular on Friday night.



## ARMADALE HILLS ARTS TRAIL

📅 Friday 7 - Sunday 16 November  
 ⌚ 10.00am - 4.00pm, times may vary

📍 Various locations

💰 Free event

🌐 [armadahillsartstrail.com](http://armadahillsartstrail.com)

Discover the creative heart of Perth Hills Armadale during the 2025 Armadale Hills Arts Trail, where local artists open their studios to the public from 7-16 November for you to see exhibitions, workshops and live demonstrations. Wander scenic hills and heritage areas while experiencing a vibrant celebration of art, community, and culture.

Nannup Forest by David Giles

**KAMBARANG**  
 October - November



## DJILBA BIDI - ROLEY POOLS

📅 Saturday 6 September

🕒 9.00am - 11.00am 📍 Roley Pools 💰 \$20

🌐 [hikecollective.com.au](http://hikecollective.com.au)

Welcome to the final part of the Six Seasons Trails Series. Journey through a 6km Roley Pools Heritage Trail and boardwalk during the Djilba season to follow the path of the mystical Wagyl (Dreamtime serpent) along the banks of Djarlgarra Beelier (the Canning River), where water flows year-round.



## ONE DAY MINDFULNESS & MEDITATION RETREAT

📅 Sunday 21 September, 5 & 19 October,

2 & 30 November 🕒 9.30am - 3.00pm

📍 64 Canns Rd, Bedfordale 💰 \$154, bookings essential

🌐 [restfulwaters.org](http://restfulwaters.org)

Escape the fast pace of daily life and immerse yourself in a transformative experience designed to restore your well-being, balance, and inner calm. This retreat offers a sanctuary for self-nurturing and will equip you with tools and techniques to carry a calmer, more mindful outlook back into your everyday routine.



## BEDFORDALE BUSH MARKETS

📅 Saturday 13 September, 11 October 9.00am - 1.00pm;

Saturday 8 November 3.00pm - 7.00pm

📍 Bedfordale Hall, 40 Admiral Rd, Bedfordale 💰 Free event,

food for sale 🌐 [bedfordalemarkets.com.au](http://bedfordalemarkets.com.au)

Take a drive to this beautiful part of the world and visit the Bedfordale Bush Markets, a country style local market in the bush. They showcase all that Bedfordale and surrounds has to offer with homegrown produce, food stalls, art, craft, nature play, sustainability and entertainment.



## HILLS ALIVE

📅 Wednesday 5 November 11.00am - 7.00pm; Thursday 6, Friday 7, Saturday 8 November

10.00am - 4.00pm 📍 10 Hall Rd, Roleystone 💰 Free event

🌐 [saintchristophersroleystone-god.com](http://saintchristophersroleystone-god.com)

An open art exhibition celebrating diverse forms of art, including but not limited to painting, pottery, sculpture, cottage and many more.



## MARMUN MIA-MIA FAMILY HEALTH DAY

📅 Wednesday 12 November 🕒 10.00am - 1.00pm

📍 10 Triton Crescent, Bedfordale 💰 Free event

🌐 [marmunmiamia.org](http://marmunmiamia.org)

This event aims to promote health and well-being within the Armadale and surrounding community by bringing together families, local health services, and community members to raise awareness about various health issues, provide support, and foster connection. Featuring a range of activities, including health talks, traditional performances and live music – creating an inclusive environment where people of all ages, genders and cultural backgrounds are welcome to come together to engage with health professionals and enjoy a free community event.

**DJILBA** the season of Conception shows a transitional period with a mix of cold, warm, rainy, and windy days. Djilba's name reflects the arrival of baby animals and the protective behaviour of birds like Koolbardi, djidi djidi (willy wag tails), and wattle birds.

**KAMBARANG** the season of Birth marks its arrival with rising temperatures, wattles, banksias, kangaroo paw, orchids and leschenaultias that have erupted into bloom. Animals wake from hibernation, and you're likely to meet bobtail lizards and baby magpies. Kambarang showcases a variety of rich colours, with the dramatic Moodjar, or native Christmas tree, displaying bright orange and yellow flowers.

# TOURISM & ECONOMIC Development



## DID YOU KNOW?

**The City of Armadale is one of the fastest-growing local government areas in Western Australia.**

Between 2019 and 2024, the City's population grew by approximately 19.5%, with an average annual growth rate of around 3.6%, significantly above the national average. As of June 2025, we have a population of 109,554 with over 6,421 registered local businesses. Forecasts predict this strong growth will continue, with the population expected to reach 148,346 by 2041.

Source: Australian Bureau of Statistics; .id Forecast



## PRIDE OF

## Workmanship

**Recognising the heart of our business community.**

On Friday 6 June 2025, the City of Armadale proudly partnered with the Rotary Club of Armadale and the Armadale Chamber of Commerce (Armadale Chamber) to host the Pride of Workmanship awards night.

It was a fantastic evening dedicated to celebrating individuals and businesses who go the extra mile in serving our local community. These awards are a reminder that pride in our work uplifts us all and makes the City a better place to live and work.

The City is proud to work with organisations like the Armadale Chamber and the Rotary Club of Armadale, who help the City magnify its positive impact on the community. The Pride of Workmanship is a great example of that, honouring and recognising individuals who go above and beyond by providing exceptional service every day.

Congratulations to the local legends who were recognised on the night.

*Pride of Workmanship recipients with Mayor Ruth Butterfield, City of Armadale Councillors, President of Armadale Chamber of Commerce Deena Syed, and President of Rotary Club of Armadale Anthony Pyle. Photo by Norman Yap Photography.*

Orchard Espresso, Roleystone



## SUPPORT YOUR COMMUNITY

## Shop Locally

**Shopping local isn't just a trend, it's an easy way to help your community grow and succeed. When you choose a local business, you are supporting your neighbours and boosting the local economy.**

The City of Armadale has created a free Local Business Directory. It's a handy guide to great shops, services, and places to eat nearby – from cosy cafés to skilled tradies and unique boutiques.



Scan the code to check out the directory today and help keep our community strong. Or visit [armadale.wa.gov.au/armadale-local-business-directory](https://armadale.wa.gov.au/armadale-local-business-directory)

# ENVIRONMENT *and* SUSTAINABILITY

## TREE PLANTING SEASON

### *is about to begin*

Over the coming months, you'll start to see our Urban Forest Team out and about planting trees across the City as part of our Urban Forest initiative, helping to grow a greener, leafier future for Armadale.

If you were selected for verge tree planting this year, you should have already received a letter. If you've got questions about the tree planned for your verge, please get in touch now as it's much easier to sort things out ahead of time.

**Missed out this year? You can request a free verge tree for the 2026 planting season. Simply submit your request at [engage.armadale.wa.gov.au/verge-tree-request](https://engage.armadale.wa.gov.au/verge-tree-request)**

Thanks for your part in helping us grow our Urban Forest.

## BRANCH OUT

The City of Armadale's Urban Forest Strategy invites residents to help green our community by planting trees in your backyard and private spaces. This year, for the first time, the City has added another avenue to support residents greening efforts by introducing the Branch Out Tree Giveaway.

Branch Out was introduced as a twofold campaign, firstly to raise awareness of the benefits of green spaces on human health and secondly to encourage residents to increase canopy on their own property. Tree stock was delivered directly to applicants by a local contractor.

Greening the City requires a collaborative effort between governing bodies, landowners and residents, and community support is essential for its success. Living in a green suburb offers direct health benefits that are enjoyed by everyone in the community. We encourage local homeowners to plant trees in their backyards and private spaces to increase the City's canopy cover.

This new initiative attracted a lot of attention from the community, and we're excited to run it again during our next planting season. Keep an eye on the City's socials and website for details On Branch Out 2026 and other City run greening incentives.



Cr Gary Smith, Cr Scott Mosey  
and Mayor Ruth Butterfield



## HARBER PARK

### *Community Planting*

On Saturday 28 June, close to 40 dedicated volunteers gathered at Harber Park in Brookdale to plant 1,300 native seedlings as part of the City of Armadale's Urban Forest program.

This initiative aims to increase green canopy cover and enhance local biodiversity in our growing suburbs.

It was a wonderful opportunity to connect with local residents who are passionate about making a positive environmental impact. The City thanks all those who participated for their time and enthusiasm.



### Want to get involved?

Help grow our urban canopy by applying for a FREE street tree through the City's website. Every tree planted contributes to a greener, healthier community.



## ARMADALE GOSNELLS

### Landcare Group

Everyone is welcome at AGLG events and no prior experience is necessary. Come for an hour or a whole event.

Visit [aglg.org.au/events](http://aglg.org.au/events) to see what's coming up.



## FLORA FOR FUTURE

The City has recently supplied 3,500 native plants to 19 local schools as part of the first year of our Flora for Future program.

This program gives students the chance to gain hands-on experience with nature by providing plants for their school's environmental areas, encouraging direct engagement with the environment and creating a deeper connection to nature. Thanks to all the schools involved who helped us promote environmental responsibility through education, awareness, and support for our Urban Forest initiatives.



Above: Armadale Primary School  
Right: Kelmscott Primary School  
Below: Aspiro Primary School

## NEW TREE TIPS

Here's how you can give your new verge tree the best start:



### Apply 50 litres of water at each watering

Weeks 1–2: Water daily,  
Weeks 3–12: Water every 2–3 days  
After 12 weeks: Water weekly until the tree is established (approximately 3 years)



Use a wetting agent to help water penetrate down to the roots



Keep the base of the tree free from grass and weeds— as these compete for water and nutrients. Remove any rubbish that may build up around the area



Regular fertilising helps the trees growth rate and overall health. Apply as directed



Use organic mulch around the root zone (but keep it away from the trunk) to:

- Retain soil moisture
- Suppress weeds
- Regulate soil temperature



### Regularly check your tree's health:

- Is it looking unhealthy?
- Are pests or insects present?
- Does it need pruning?

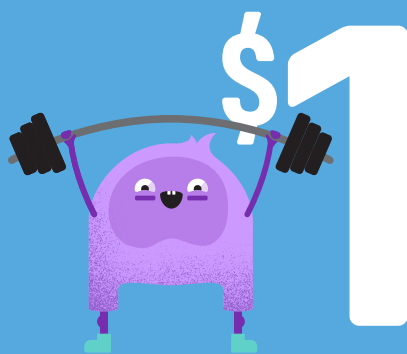
Need help? Contact the Urban Forest Team for advice or an inspection on (08) 9394 5000 or via [parksemail@armadale.wa.gov.au](mailto:parksemail@armadale.wa.gov.au)



# ARMADALE FITNESS & AQUATIC CENTRE



## JOIN FOR



Been thinking about signing up for a membership at AFAC? Join before 30 September for just \$1.



Terms and conditions apply. Visit [active.armadale.wa.gov.au](https://active.armadale.wa.gov.au) for more information.

## Something new is in the studio

Les Mills Virtual Group Fitness has arrived, bringing more variety, more time slots, and more ways to move. Whether you're into high-energy cardio, strength, dance or something more mindful like BodyBalance, there's now even more choice to suit your schedule. It's a great way to stay motivated, try something new, and keep working towards your fitness goals—any time that suits you.



# LIMITLESS TEENS

Our brand new Limitless Teens program is here! Specifically designed for teens aged 12 to 15 who want to get active, feel strong, and have fun in a supportive environment.



Whether you're just starting out or already into fitness, this program offers structured workouts led by expert trainers who know how to make exercise safe, engaging, and rewarding. The sessions focus on strength and conditioning, helping teens build endurance, flexibility and overall fitness through age-appropriate activities.

But it's not just about physical gains. Limitless Teens is about building confidence, learning life-long healthy habits, and connecting with others.

It's a great opportunity to move, learn, and grow in a space designed just for teens.

Workouts are fun, social, and empowering with a focus on teamwork, discipline, and self-belief. If you're ready to feel stronger, more confident, and supported every step of the way, this is your space to shine.

or more information, visit [active.armadale.wa.gov.au/limitless-teens](https://active.armadale.wa.gov.au/limitless-teens)



## AUSactive's Million Moves

The goal of Million Moves is simple: to make movement easy, enjoyable, and accessible for everyone, to help develop exercise into a lifelong habit.

From 1-21 September, we're calling on local businesses, community groups, families, friends, and workplaces to complete 75 moves each day for 21 days. Moves can be any kind of physical activity, seated or standing, high intensity or gentle, from squats to lunges, shoulder presses to push ups, or from core exercises to walking/running for 7.5 minutes.

It's not too late to join! Sign up now via [millionmoves.org.au](https://millionmoves.org.au)



## Upcoming Events at AFAC

Want to stay up to date with everything going on at Armadale Fitness and Aquatic Centre?

Check out [active.armadale.wa.gov.au/upcoming-events](https://active.armadale.wa.gov.au/upcoming-events) to see what's happening.

## New Group Fitness timetable

Have you checked out our updated Group Fitness timetable? It's live now – find it at [active.armadale.wa.gov.au/health-fitness-timetable](https://active.armadale.wa.gov.au/health-fitness-timetable)

# RANGER & EMERGENCY SERVICES

## BUSHFIRE

## PREPAREDNESS:

### Find out more

To learn more about Bushfire Preparedness and getting ready for the upcoming season, visit [engage.armadale.wa.gov.au/bushfire-ready](https://engage.armadale.wa.gov.au/bushfire-ready)

>> Plus, complete the survey for a chance to win great prizes!

## KEEP YOUR PET'S

## REGISTRATION

### up to date



Animal registration renewal notices will be sent out in October, so now's the time to check your details.

Moved house? Changed numbers? Pet rehomed or passed away? Keeping your info current helps Rangers reunite lost pets quickly and safely.

Up-to-date records also help the City plan better services for pet owners and make it easier to transfer registration if you move (at no cost!).

If your details have changed, please update them by contacting Ranger Services on (08) 9394 5000 or via [info@armadale.wa.gov.au](mailto:info@armadale.wa.gov.au) before October notices go out.



## PREPARING FOR FIRE SEASON:

### What you need to know

As bushfire season approaches, all property owners in the City of Armadale are reminded of their legal responsibility to reduce fire risk. Fire prevention works must be completed by 30 November 2025 and maintained until 31 March 2026, as outlined in the 2025/2026 Firebreak and Hazard Reduction Notice.

### Key Requirements

#### Properties over 5,000m<sup>2</sup>:

- Install a 3m wide, 4m high firebreak within 10m of the boundary and around all structures
- Maintain a 3m wide, 4m high driveway
- Keep roofs, gutters, and wall of habitable buildings clear of inflammable matter.

#### Properties 5,000m<sup>2</sup> or less:

- Reduce all flammable matter (excluding living plants and reticulated lawn) to under 5cm high across the property
- Maintain a 3m wide, 4m high driveway
- Clear gutters, roofs, and walls of flammable material.

**Need a Variation?** If you can't meet these requirements, apply in writing by 1 October 2025. Natural features (like rocky outcrops or irrigated gardens) may be accepted alternatives. Firebreak exemptions will not be granted.



View the full notice at [my.armadale.wa.gov.au](https://my.armadale.wa.gov.au) or call Ranger Services on (08) 9394 5000.

## HELP US KEEP OUR PATHS SAFE

### for everyone

Parking on footpaths is illegal under the City's Parking and Parking Facilities Local Law and puts pedestrians at risk—especially children, pram users, and those using wheelchairs or walkers.

Please keep paths clear and safe for everyone. To report vehicles blocking footpaths, please contact Ranger Services on (08) 9394 5000.





## SENIOR COMMUNITY

### Citizen of the Year

Local resident Nalin Jayawardena was named Senior Community Citizen of the Year in recognition of his long-standing dedication to both the Indigenous and Sri Lankan communities in the Armadale area.

Nalin has been a strong advocate for inclusion, cultural connection and community harmony through his volunteer work and musical talents. A passionate singer and songwriter, he uses music to bring people together and celebrate shared values. Whether through mentoring, cultural events or creative projects, Nalin's contribution to

community life has been both meaningful and far-reaching. His passion for helping others and promoting unity has made a lasting impact across generations.

The City is proud to recognise Nalin's achievements and ongoing efforts to enrich community life in Armadale.



Nalin receiving his award from Mayor Ruth Butterfield.

Nalin's original song 'My Australia', which highlights themes of multiculturalism and belonging, even caught the attention of the Prime Minister.

## Meet your COUNCIL



### MAYOR



Mayor  
Ruth Butterfield

### HERON WARD



Cr Michael  
Hancock



Dr Caroline  
Wielinga

### HILLS WARD



Cr Sarah  
Stoneham



Cr Scott  
Mosey

### LAKE WARD



Cr Sartaj  
Virk



Cr Michelle  
Silver

### MINNAWARRA WARD



Cr Kerry  
Busby



Cr Gary  
Smith



Cr Paul  
Hetherington



Cr Laurie  
Sargeson

### RANFORD WARD



Cr Shanavas  
Peter



Cr Keyur  
Kamdar

### RIVER WARD



Deputy Mayor  
Cr John  
Keogh



Cr Jiby  
Joy

### COUNCIL MEETINGS

Council Meetings are held in the Council Chambers, and Committee Meetings in the Committee Room, both at the City of Armadale Administration Building, 7 Orchard Avenue, Armadale. Council Meetings can be streamed live via [youtube.com/CityofArmadale](https://www.youtube.com/CityofArmadale)

### CITY OF ARMADALE

Administration Centre: 7 Orchard Avenue, Armadale WA 6112

[armadale.wa.gov.au](https://www.armadale.wa.gov.au) | (08) 9394 5000 | [info@armadale.wa.gov.au](mailto:info@armadale.wa.gov.au)

Information correct at time of printing 15/08/2025

This publication is available in digital format and can be issued by email or found on our website. Other formats such as audio, large print or braille are available upon request. For more information or to request an alternate format please email [info@armadale.wa.gov.au](mailto:info@armadale.wa.gov.au)

