

CPD courses for 2025-26



Residential,  
online and  
face-to-face  
courses

Secondary CPD courses for teachers and technicians

## High-quality professional development for all STEM educators

Impactful, flexible and informed by  
years of experience and robust evidence



# Why choose STEM Learning?

We know you have limited time so you want to spend it wisely.  
We have years of experience and data that show the hugely positive impact our CPD courses have on teachers and students.



## What makes our course leaders experts?

Each of our course leaders are required to complete our 'Leading Professional Development' programme which means they are able to:



Lead effective subject-specific professional development



Adapt and assess professional development



Embed effective practice for impact



Understand professional learning



Apply evidence and research to support professional development

## Professional development that works for you

Teachers who engage in STEM Learning CPD are 155% more likely to remain in the profession

All courses are written and delivered by education experts who have qualified through our professional development leadership programme

All courses are aligned to teachers' wider professional development frameworks, including the Early Careers Framework and National Professional Qualification in Leading Teaching

All of our CPD includes wraparound support before, during and after the course, including peer-to-peer support via our STEM Community

# Key Statistics

## Impact on your teaching

We surveyed teachers who participated in our professional development courses:

# 95%

stated that our CPD improved their knowledge and skills

# 94%

agreed our CPD will have a positive impact on their students

# 93%

agreed our CPD strengthened their enthusiasm for teaching



# How you can learn with us

## Evidence-based CPD delivered by experts

Our fantastic range of STEM CPD, developed and delivered by our trusted STEM teaching experts, features more options and a greater choice than ever before. We know you have limited time for professional development, so you want to spend your time wisely. We have years of experience and data that shows the hugely positive impact our CPD courses have on teachers and their students.



### Residential



Takes place at the National STEM Learning Centre in York which is set up specifically for STEM education, with state-of-the-art labs, classrooms, and breakout spaces that support hands-on, collaborative learning. These courses also include on-site accommodation and catering.

### Live online



Led by education experts, these shorter sessions allow you to focus on specific areas of STEM teaching from wherever you are where no practical work is required. All courses are delivered virtually using MS teams.



### Face-to-face



Taking place at the National STEM Learning Centre in York, these courses support you in tackling a specific area within your teaching. Typically, these courses are one or two days in duration.

### Self-paced



Access these courses online so you can learn wherever and whenever suits you. Build subject knowledge, access real classroom footage and reflect to improve your teaching practice and maximise your students' learning.

### In-school support



We offer a range of additional support including 1:1 support, consultancy and we can come and deliver many of the courses in this brochure at your school. Find out more by emailing [commercialteam@stem.org.uk](mailto:commercialteam@stem.org.uk)

## Hear from a fellow teacher

### Why STEM Learning CPD has been a game-changer for me

I first visited the National STEM Learning Centre for an A level biology course nearly twenty years ago which was facilitated by one of the leading names in the subject at the time.

This level of expertise is not unusual at STEM Learning - high-calibre facilitators and cutting-edge content are standard across their professional development offer. CPD is based on the benchmarks and fundamentals of science teaching that ensure that is high quality and evidence informed.

Over my teaching career, I have taken part in several residential, in-person courses through STEM Learning, and each one has added measurable value to my practice.

**“I’ve left with greater clarity around curriculum design, deeper subject knowledge, and new strategies to support learners effectively.”**

Attendance on the health and safety course means that we now have risk assessment information at the point of use and have improved tidying away routines for the whole department. I could easily go on! Fellow teachers and subject leads have shared similar experiences, and I often hear positive feedback from across the science education community.

Janice, a Head of Science, recently told me: “You are given fundamental curriculum knowledge which helps and aids specialists and non-specialists to teach Science courses.”

Emma, another Head of Science, reflected on a decade of staff development: “When I reflect over the last 10 years, the teachers who have done courses with STEM Learning – they are better professionally.”

One of the aspects I appreciate most is the blend of research-informed content and practical classroom strategies.

**“STEM Learning CPD doesn’t just offer new ideas—it helps teachers implement them effectively.”**

I also regularly attend STEM Learning’s termly network meetings, which are a great way to stay informed about national developments, share challenges with peers, and discover useful resources. These sessions help keep my practice up to date and provide a valuable space for professional reflection.

### Linda Crouch

Director of Learning – Science Faculty  
Berwick Academy, Northumberland





# Science

From ECT to Head of Science, key stage 3 to A level, our fantastic range of CPD for science teachers has you covered.

We are also proud to continue to offer our range of face-to-face professional development opportunities to support teachers of science with the mathematics content within their subject, designed to develop shared approaches and improve mathematics subject knowledge and pedagogy across your setting.

## Further support we offer

**Teaching resources**  
Including the Best Evidence in Science Teaching resources, resources to support the Good Practical Science benchmarks and our space resources in our ESERO collection.

**STEM Clubs**  
A chance for young people to explore science in less formal settings.

**Careers**  
From career profiles, posters, videos and information packs, our science careers support contains a wealth of resources and information to help you bring careers learning to life.

**STEM Ambassadors**  
Our STEM Ambassador programme is made up of thousands of amazing volunteers who bring real-life examples of STEM careers into schools. They help to break stereotypes and offer engaging activities to inspire the next generation into the infinite possibilities of STEM pathways.

"New strategies and time to reflect. Great content as a whole with many useful tools I can share with my department."

– Participant on  
'Leading Secondary Science' course

## Leadership



### Improving your science leadership NEW

Learn how to become a successful head of science by developing strategies to lead and manage your science department.

🏠 Residential 🕒 £640 + VAT # SL208

### New and aspiring heads of science

👥 Face-to-face 🕒 £280 + VAT # SL200

### Leading secondary science

📶 Live online 🕒 £199 + VAT # SL336

### Leading assessment in secondary science

👥 Face-to-face 🕒 £280 + VAT # SL202

### Leading health and safety in science departments

🏠 Residential 🕒 £640 + VAT # SL253

All dates and details  
can be found at  
[stem.org.uk/secondary/cpd](https://stem.org.uk/secondary/cpd)



## General sciences

### Reaching for grade 9

🏠 Residential 🕒 £1,000 + VAT # SL270

### KS3 science for non-scientists

📶 Live online 🕒 £199 + VAT # SL275



### Aiming for grade 5 in science

Discover techniques to support students with lower prior attainment by helping them to aim for grades 4 and 5.

📶 Live online 🕒 £199 + VAT # SL274

### Managing the practical classroom

👥 Face-to-face 🕒 £280 + VAT # SL214

### Practical work in challenging settings

👥 Face-to-face 🕒 £280 + VAT # SL218

### Science practical work masterclass NEW

📶 Live online 🕒 £89 + VAT # SL225

### Secondary science for non-scientists

🏠 Residential 🕒 £1,000 + VAT # SL203

### Reaching for grade 9

📶 Live online 🕒 £199 + VAT # SL271

### Supporting students to access GCSE science

👥 Face-to-face 🕒 £280 + VAT # SL223

### Tackling climate change in secondary science

📶 Live online 🕒 £139 + VAT # SL213

### Summer School for ECTs teaching 11-16 science

🏠 Residential 🕒 £640 + VAT # SL255

### Supporting students with SEND in secondary science

🏠 Residential 🕒 £640 + VAT # SL207

### Oracy in secondary science NEW

📶 Live online 🕒 £89 + VAT # SL224

### Equity, diversity and inclusion in the science curriculum NEW

📶 Live online 🕒 £89 + VAT # SL226



### National Secondary science conference

Spend the day getting hands-on in workshops and lab-based sessions as well as hearing from experts in science education.

See page 14 for details

### Secondary science network meetings

📶 Live online 🕒 £89 + VAT # SL230



Maths in science



Developing shared approaches between science and maths

Work together to explore techniques to help students join up their learnings between science and maths.

Residential £1,000 + VAT # SL456

Maths to support low attainers in science

Live online £89 + VAT # SL466

Maths in GCSE science

Live online £199 + VAT # SL461

Maths for A level biology

Face-to-face £560 + VAT # SL284

Maths for A level chemistry

Face-to-face £560 + VAT # SL297



Maths for A level physics

Improve your understanding and teaching of mathematics topics required for A level physics.

Face-to-face £560 + VAT # SL294

Core Maths for teachers of science

Live online £199 + VAT # SL464

Using technology to teach mathematics for science

Live online £89 + VAT # SL465

Biology



Teaching to succeed at GCSE biology

Focus on the areas of biology that will most impact students by investigating subject specific language, common misconceptions and mistakes they make.

Residential £640 + VAT # SL204

New to teaching GCSE biology

Face-to-face £280 + VAT # SL215

New to A level biology

Residential £1,280 + VAT # SL550

Established teachers of A level biology

Residential £640 + VAT # SL501

Maths for A level biology

Face-to-face £640 + VAT # SL284

Teaching the triple science biology module

Live online £89 + VAT # SL333

Chemistry

Chemistry for non-specialists

Residential £1,000 + VAT # SL322

Teaching to succeed at GCSE chemistry

Residential £640 + VAT # SL205

New to teaching GCSE chemistry

Face-to-face £280 + VAT # SL216

Established teachers of A level chemistry

Residential £640 + VAT # SL500



New to A level chemistry

Learn how to lead and support outstanding practical chemistry, linking it to effective pedagogy within the subject.

Residential £1,280 + VAT # SL551

New to teaching A level Chemistry (Year 12 Only)

Residential £640 + VAT # SL553

New to teaching A level chemistry (Year 13 Only)

Residential £640 + VAT # SL554

Maths for A level chemistry

Residential £640 + VAT # SL297

Teaching the triple science chemistry module

Live online £89 + VAT # SL334

Physics

Physics for non-specialists

Residential £1,000 + VAT # SL201

Teaching to succeed at GCSE physics

Residential £640 + VAT # SL206

New to teaching GCSE physics

Face-to-face £280 + VAT # SL217



Established teachers of A level physics

Develop engaging approaches to core topics, discussing advances in physics which can put the subject content into practical contexts.

Residential £640 + VAT # SL502

New to A level physics

Residential £1,280 + VAT # SL552

New to teaching A level physics (Year 12 Only)

Residential £640 + VAT # SL555

New to teaching A level physics (Year 13 Only)

Residential £640 + VAT # SL556

Maths for A level physics

Residential £640 + VAT # SL294

Teaching the triple science physics module

Live online £89 + VAT # SL335

# SEND

## Supporting autistic learners in science

Self-paced online £30 + VAT # NE266

## Supporting learners with ADHD in science

Self-paced online £30 + VAT # NE267

## Supporting learners with dyslexia in science

Self-paced online £30 + VAT # NE268



## Supporting sight impaired learners in science

Supporting sight impaired learners in science  
Explore a range of practical strategies to support sight impaired learners in science and understand their barriers to learning.

Self-paced online £30 + VAT # NE269

## Adaptive teaching to meet the needs of SEND students in science

Live online £89 + VAT # SL232

## Planning lessons for SEND students in science

Live online £89 + VAT # SL233

## Adapting assessment for SEND students in science

Live online £89 + VAT # SL234

## Self-paced online courses

### Curriculum design - leadership

With these courses you receive the same high-quality teacher training but you can access it on-demand at anytime, anywhere.

Our self-paced online courses are specially designed with your time in mind, delivering courses that are impactful, flexible and informed by years of direct experience and robust evidence.

### Curriculum design for secondary school science

Self-paced online £60 + VAT # NE209

### Exam courses

#### Using exam analysis to improve student performance

Self-paced online £30 + VAT # NE270

#### Revising effectively for GCSE science exams

Self-paced online £30 + VAT # NE271



#### Preparing students for 6-mark exam questions in science

You will explore a range of strategies to support students to answer 6 mark questions.

Self-paced online £30 + VAT # NE272

#### Supporting students to answer GCSE exam questions in science

Self-paced online £30 + VAT # NE273

# Science Technicians

Science technicians play an essential role in supporting the implementation of the science curriculum. Our support will help you at various career stages and will help to develop networks, share practice and improve science provision.

## We support technicians to:

- Develop confidence through building a secure subject knowledge
- Develop the skills required to support high-performing science departments
- Provide networking opportunities for technicians to share practice and work collaboratively with peers

## Further support we offer

### Good Practical Science benchmarks

Launched in September 2017 by Sir John Holman, these provide a framework of ten benchmarks to use when planning your own approach to practical science.

### STEM Clubs

A chance for young people to explore science in less formal settings. We can support you in planning and deliver STEM Club sessions to help to ignite new interest and to raise attainment in science subjects.

### Careers

From career profiles and posters to videos and information packs, our science careers support contains a wealth of resources and information to help you bring careers learning to life.

### STEM Ambassadors

Our STEM Ambassador programme is made up of thousands of amazing volunteers who bring real-life examples of STEM careers into schools. They help to break stereotypes and offer engaging activities to inspire the next generation into the infinite possibilities of STEM pathways.

All dates and details  
can be found at  
[stem.org.uk/secondary/cpd](https://stem.org.uk/secondary/cpd)



## Skills for new technicians – zero to hero in 5 days

Residential £1,640 + VAT # SL602

## Introduction to effective Health and safety in science

Live online £139 + VAT # SL600

## Technicians and Teachers Supporting: students in STEM clubs

Residential £640 + VAT # SL608

## STEM Technicians Festival

Conference £160 + VAT # SL637

## Technicians supporting KS3 and KS4 biology

Residential £640 + VAT # SL641

## Technicians supporting KS3 and KS4 chemistry

Residential £640 + VAT # SL642

## Technicians supporting KS3 and KS4 physics

Residential £640 + VAT # SL643

## Technicians supporting post-16 chemistry

Residential £640 + VAT # SL609

## Technicians supporting post-16 physics

Residential £640 + VAT # SL610

## Technicians supporting post-16 biology

Residential £640 + VAT # SL611



# Mathematics

We have a wide range of support and professional development available for teachers of mathematics.

We also develop cross-curricular courses to allow departments to collaborate and adopt skills and knowledge from other STEM subjects to enhance their understanding of their own subject.

## Further support we offer

### Teaching resources

We host over 14,000 freely available, quality-assured classroom resources to help you inspire young people including the SMILE Cards, the Standards Units, GAIM, Graphing Stories and many more.

### STEM Clubs

These include a range of resources to excite and inspire, as well as handbooks, webinars and videos to support you at every stage and help inspire students to fully engage with your mathematics lessons and beyond.

### Careers

Our mathematics careers support contains a wealth of resources and information to help you bring career learning to life. Destination STEM also provides students with direct support, advice, and opportunities to help explore pathways into STEM careers.

### STEM Ambassadors

Our STEM Ambassador programme is made up of thousands of amazing volunteers who bring real-life examples of STEM careers into schools. They help to break stereotypes and offer engaging activities to inspire the next generation into the infinite possibilities of STEM pathways.

### Improving mathematics in key stage 3

📶 Live online 🕒 £199 + VAT # SL451

### New to teaching Core Maths

📶 Live online 🕒 £199 + VAT # SL455



### Developing shared approaches between science and maths

Come together as teachers of maths and science to explore techniques to help students take their learnings to help them in both subjects.

🏠 Residential 🕒 £1,000 + VAT # SL456

### New to Core Maths Summer School

🏠 Residential 🕒 £1,000 + VAT # SL457

### Maths in GCSE science

📶 Live online 🕒 £199 + VAT # SL461

## Supporting STEM Clubs

### Technicians and Teachers Supporting: students in STEM clubs

🏠 Residential 🕒 £640 + VAT # SL608

“Attending the course with someone else from the same school had helped to develop ideas we can share between departments. Having additional inset and CPD time on this has helped out at school and encouraged discussion”

– Participant on 'Developing shared approaches between maths and science' course

# Supporting AI and digital

It's vital that students are taught digital skills, especially given their importance at helping young people prepare for the transition from school to employment and the wider world. Our CPD courses for teachers equip them with the skills and confidence to teach digital skills.

With the UK Government's Digital Strategy now firmly embedded, the need for digital skills is growing, and so is our support for schools.

We also support schools to integrate AI through CPD, classroom resources, and supported guidance. We support educators in using AI for personalised learning, STEM engagement, and future career preparation.

## Further support we offer

### Teaching resources

We host over 14,000 freely available, quality-assured classroom resources to help you integrate technology into your STEM lessons as well as the benefits of using AI in the classroom to help you reduce your workload.

### STEM Clubs

These include a range of resources to excite and inspire, as well as handbooks, webinars and videos to support you at every stage and help inspire students to develop their digital skills.

### Careers

Careers support contains a wealth of resources and information to help you bring career learning to life. Destination STEM also provides students with direct support, advice, and opportunities to help explore pathways into STEM careers.

### STEM Ambassadors

Our STEM Ambassador programme is made up of thousands of amazing volunteers who bring real-life examples of STEM careers into schools. They help to break stereotypes and offer engaging activities to inspire the next generation into the infinite possibilities of STEM pathways.

## Digital Skills



### Digital skills: cybersecurity

From understanding how cyber-attacks are developed to the prevention methods, you will develop your technical understanding of cybersecurity.

🏠 Residential 🕒 £640 + VAT # SL950

### STEM Digital conference: Tech and AI to tackle teacher workload

🏠 Conference 🕒 £140 + VAT # S920

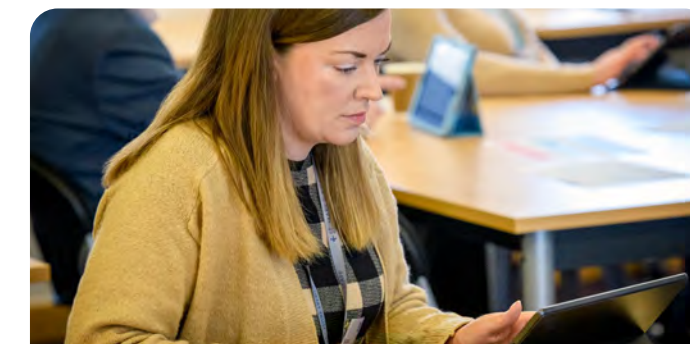
### Developing augmented reality (AR) products

📶 Live online 🕒 £199 + VAT # SL951

### 3D modelling and animation using Blender

📶 Live online 🕒 £199 + VAT # SL952

## Artificial Intelligence



### Unlocking AI potential for teachers

Find out how Generative AI like ChatGPT and CoPilot can help you adapt teaching and improve assessment while reducing workload.


📶 Live Online 🕒 £1,640 + VAT # SL950



# Conferences

Our national teacher conferences provide educators, subject leaders, and trainees with opportunities to engage in professional development, collaborate with peers, and explore the latest innovations in STEM education.

### National Secondary Science Conference




3<sup>rd</sup> July 2026  
York - National STEM Learning Centre  
£149 + VAT *Early bird offer £109 + VAT\**

A national event for those teaching secondary science. Join us as we explore how to make science subjects more impactful and enjoyable as well as the chance to develop networks with other like-minded people.


Through inspiring keynote speakers such as Emily Perry - and interactive and engaging workshops, you will uncover a range of effective resources & strategies.

*\*offer ends 31st January 2026*

Secure your place  
National Secondary Science Conference



### Stem Digital Conferences




14<sup>th</sup> November 2025, London  
22<sup>nd</sup> June 2026, York  
London - Central London Just Eat offices  
York - National STEM Learning Centre, York  
£149 + VAT *Early bird offer £109 + VAT\**

Join us for an inspiring event featuring two dynamic keynotes exploring the ongoing evolution of AI in education and how to safely use the power of AI in education. In 2025 we were joined by Dr Jon Chippindall and Darren Coxon and more high-profile speakers will be in attendance next year.

*\*London offer ends 30th September 2025,  
York offer ends 31st January 2026*

Secure your place  
STEM Digital Conferences





# CPD subscriptions

A STEM Learning CPD subscription is the most effective way to develop and improve STEM subject outcomes in your school or trust.


The subscription offers schools unlimited access to our highly impactful residential programme at the National STEM Learning Centre, our accessible remotely-delivered courses and all STEM Learning conferences.

## What's included?

- Unlimited STEM CPD
- Free access to national conferences
- Network meetings
- Education updates \*
- Collaborative community access \*
- Engagement data reporting \*

*\* Exclusive access - only available with a CPD subscription!*

Scan for more details  
or search  
[stem.org.uk/cpd-subscriptions](https://stem.org.uk/cpd-subscriptions)









### A participant said:

"Well worth your time, great experience in terms of practicals and knowledge and how to implement these within the classroom. The opportunity for collaboration and discussion with also beneficial." ★★★★★



**Access our full range of courses  
and wider support at**  
[www.stem.org.uk/secondary/CPD](http://www.stem.org.uk/secondary/CPD)

