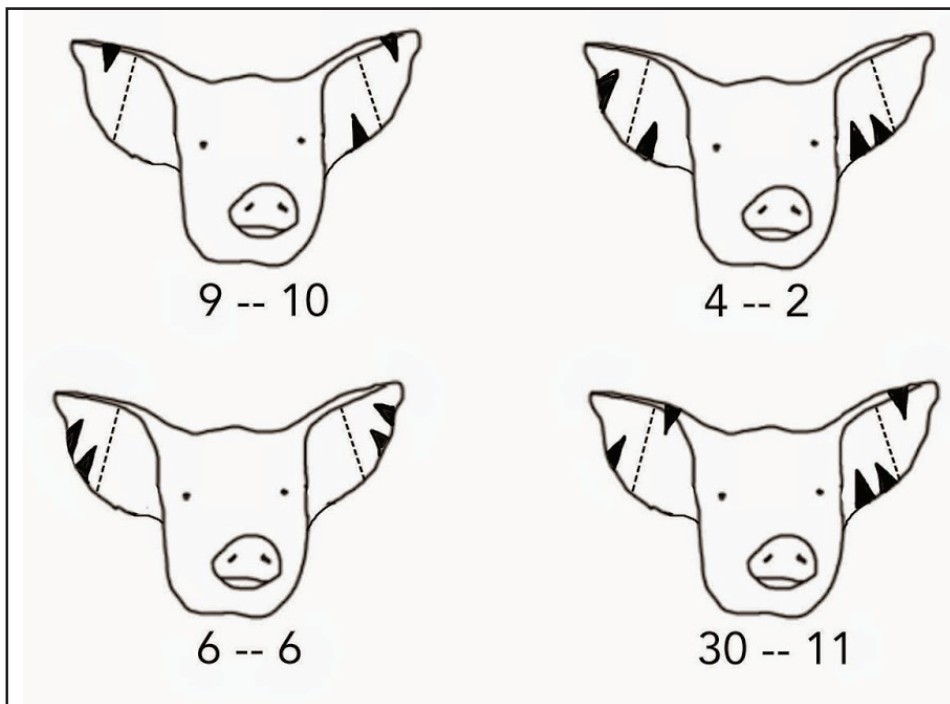


The Pig Problem

Created by Sian Zelbo, 1001mathproblems.com

Farmers have a system for notching the ears of pigs to help identify them. The notches in each ear represent a number. There are four places for notches in each ear, and each place can hold either 0, 1, or 2 notches.

Use the clues below to decode the system and then notch your own pig at the bottom of the page.



Your turn! This is pig number 14 -- 12. Can you place the ear notches so that he can be correctly identified?

