



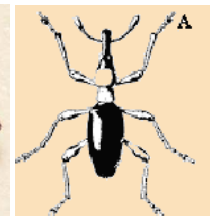
LOUISIANA DEPARTMENT of
AGRICULTURE & FORESTRY

MIKE STRAIN, DVM
Commissioner

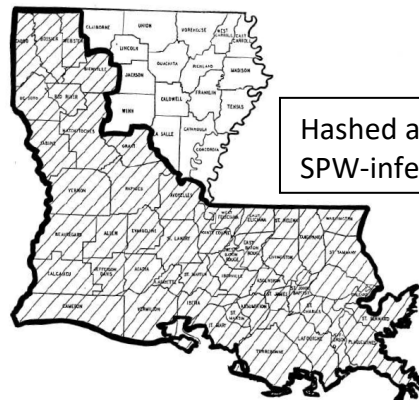
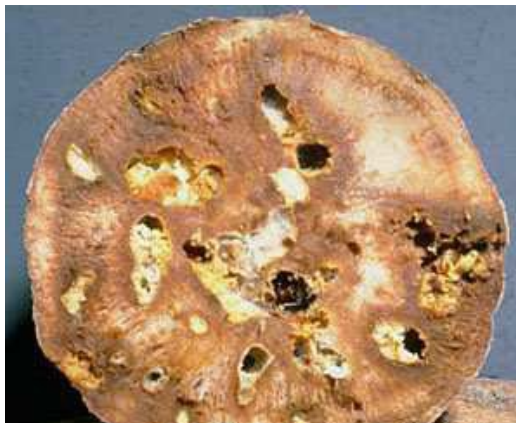
PEST: Sweetpotato Weevil (*Cylas formicarius elegantulus*)

BASIC PROFILE: SPW is a soil pest that feeds on and develops in sweet potatoes. The adult weevils (~6 mm or 3/16 inch long) lay eggs in sweet potato roots and stems and the developing larvae feed in the root tissues, causing internal cosmetic damage and creating an 'off taste' in the crop. The life cycle requires ~28-30 days on average. SPW is much more widespread in the southern/western portion of Louisiana. SPW can overwinter and develop on selected wild host plants such as certain morningglories.

LDAF ACTIVITY: LDAF conducts annual surveys for this pest using pheromone lure traps. Traps are placed on the perimeter of every seed bed and production field statewide from planting through harvest. SPW-infested and SPW-free areas ('pink' and 'green') are designated for quarantine purposes, to protect against the spread of the pest into areas considered commercially free from SPW. LDAF certifies the crop based on the trapping program. Marketplace, platform and record-check inspections are done.



Adult feeding
holes and
larval damage
to sweet
potatoes.



Hashed area shows
SPW-infested parishes