



LOUISIANA DEPARTMENT of
AGRICULTURE & FORESTRY

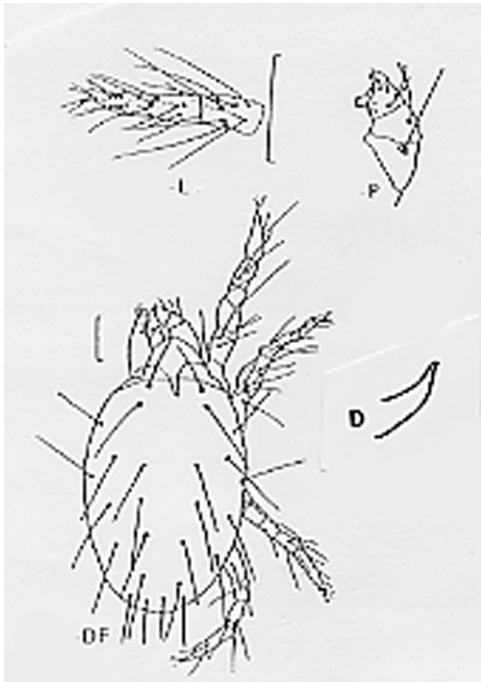
MIKE STRAIN, DVM
Commissioner

PEST: Bamboo Spider Mite (*Schizotetranychus bambusae*)

BASIC PROFILE: BSM is an introduced Asian mite pest of bamboo that has very limited distribution in the U.S. The mites infest ornamental bamboo plants, feeding and reproducing on young leaves and completing a full life cycle in 7-9 days. They spin a light webbing which appears on the leaves. Feeding symptoms include small, light-colored flecks on bamboo leaves creating a speckled appearance.

LDAF ACTIVITY: USDA and LDAF have determined that this pest can spread via a number of dispersal methods and that regulatory action will not be effective to stop the spread. Control strategies for BSM will be developed and recommended to the bamboo industry by research and extension personnel in areas where the pest is present. No surveys are planned by LDAF although any unhealthy bamboo plants offered for sale at retail stores in Louisiana will be examined and removed from sale for treatment if necessary.

Sketch of BSM adult (Reck 1941)



NOTE:

Photos of damaged bamboo shown here are NOT specific for BSM. Damage shown may be due to feeding by other species of mites in the same genus. No photos specific to BSM damage were found.

