

PEST: Orange Rust of Sugarcane (*Puccinia kuehnii*)

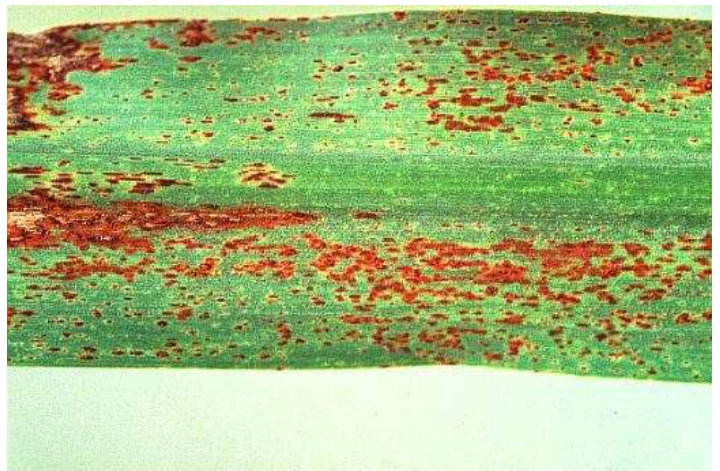
BASIC PROFILE: ORS is a fungal disease that attacks sugarcane. It first appeared in the U.S. in 2007, in Florida. ORS spores spread on the wind. Initial symptoms of ORS are tiny, elongated yellow lesions, which develop a pale yellow-green halo as they increase in size. Lesions later develop an orange to orange-brown color but they never turn dark brown. Pustules tend to occur in groups on the affected leaf surface with most pustules on the lower surface and more lesions toward the leaf base. Control measures rely on fungicide treatments and resistant varieties.

LDAF ACTIVITY: LDAF does not take any regulatory action on ORS. Once it was found in the U.S., USDA determined that no regulatory action would be helpful. If found in Louisiana, LDAF will coordinate with LSU Extension for the development and implementation of best management practices (BMPs) to help control the disease.

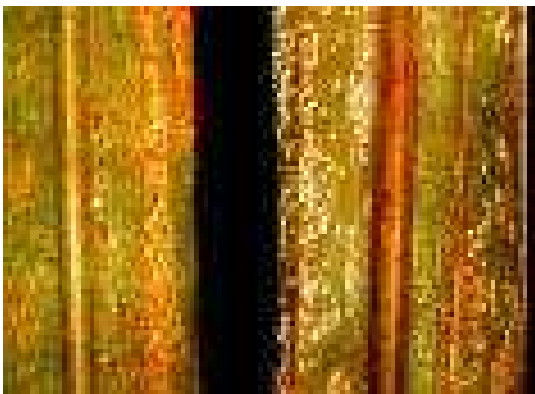
Very few photos of ORS are available. The top two photos below are photos of a similar sugarcane rust, *Puccinia melanocephala*, which in its earlier stages may resemble ORS. ORS has the typical rust-type symptoms often seen on sugarcane.



Early rust symptoms on sugarcane.
Courtesy Tom Isakeit, TAEX, Weslaco, 1996.



Rust (*Puccinia melanocephala*) symptoms on sugarcane.
Courtesy Tom Isakeit, TAEX, Weslaco, 1996.



Actual Orange Rust of Sugarcane