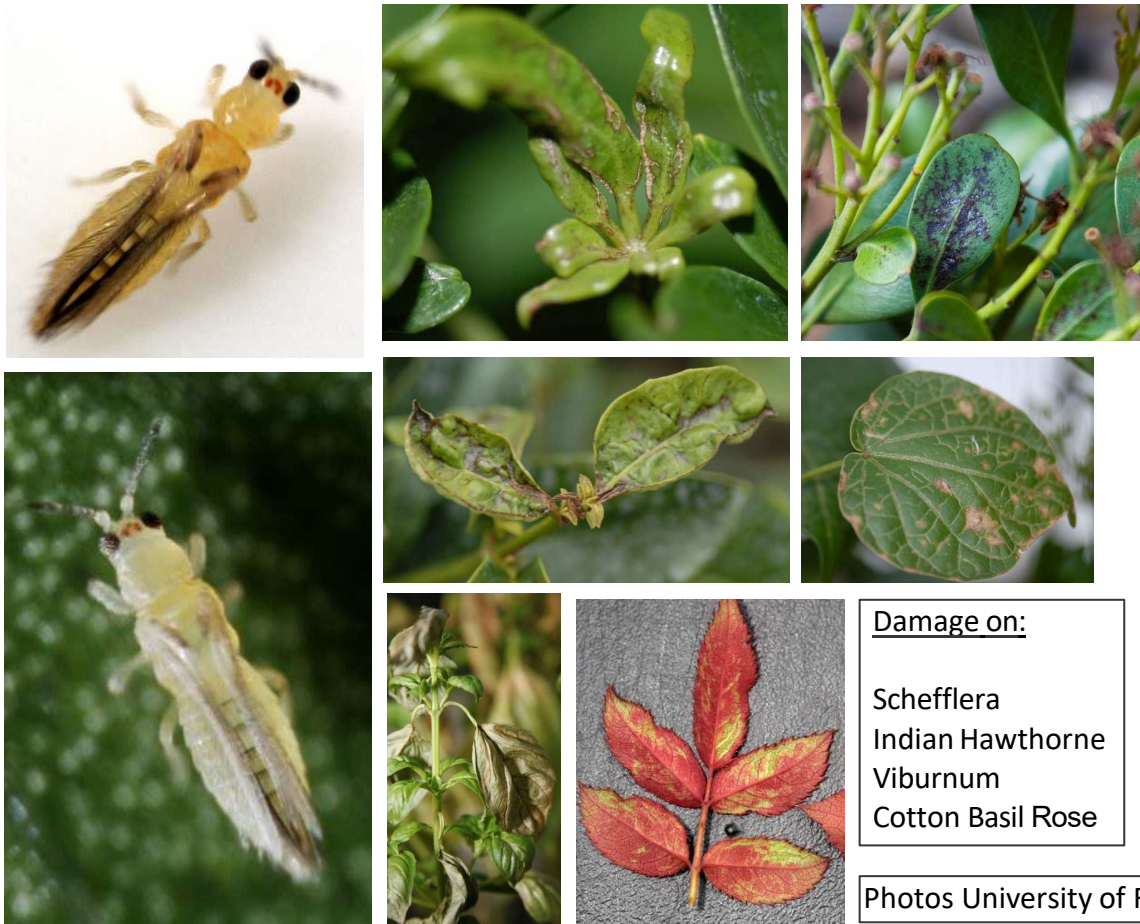


PEST: Chilli Thrips (*Scirtothrips dorsalis*)

BASIC PROFILE: Chilli Thrips is a tiny pest of many vegetable, fruit and ornamental plants, including roses. Adults are 1-2mm (<1/16 inch) in size, have a pale body and dark wings and must be mounted on a slide for ID. Larvae are very difficult to ID. The life cycle is fast, usually ~2 weeks. Feeding typically deforms leaves, flowers and fruits. Severe infestations can stunt plants. This pest was confirmed in Florida in 2005 and is likely to move on nursery stock shipments. Control recommendations include a number of labeled pesticides. Damage symptoms are the best way to find this pest.

LDAF ACTIVITY: it is unlikely LDAF will be conducting specific surveys for Chilli Thrips in the future. However, it should be looked for in all routine nursery grower and NSD inspections, especially at sites receiving Florida stock. If found, Stop Orders are issued after official ID. Plants may be treated and re-inspected or destroyed. Tracebacks or traceforwards may be done. There are no federal restrictions in place at this time.



Damage on:
 Schefflera
 Indian Hawthorne
 Viburnum
 Cotton Basil Rose

Photos University of Florida