



GOOD

MORNING!

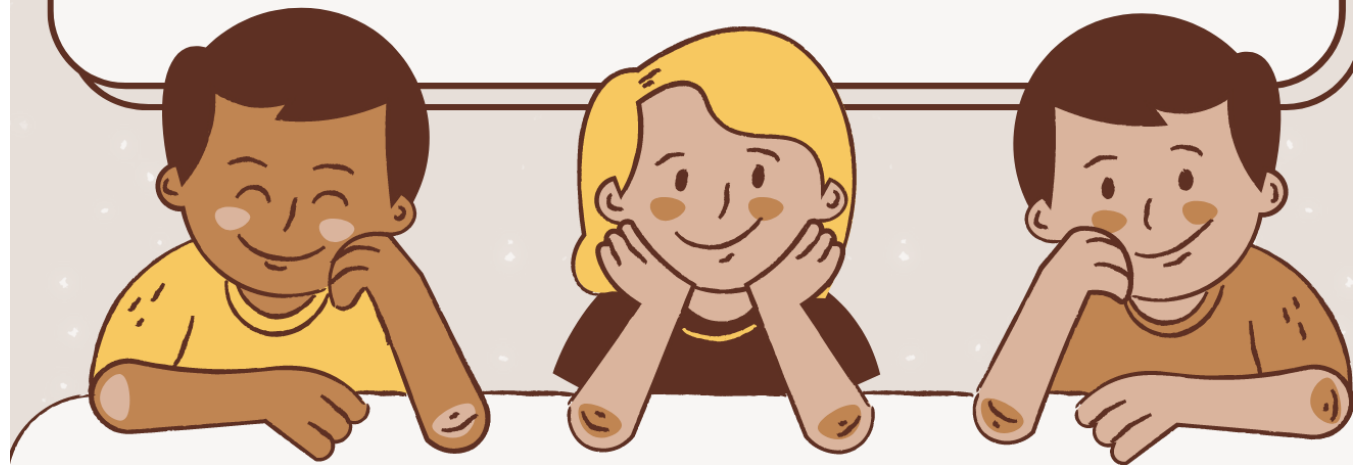
► **Sharyl** will join Mrs. Charlotte and the **Pre-K** class.

► **Anna Jane** will join Mrs. Sandra in the **K-3<sup>rd</sup>** grade class.

► **Teresa** will join Mr. Eric in the **4<sup>th</sup>-8<sup>th</sup>** grade class.

# CLASSROOM COMPANIONS

Deepening our intergenerational connections







Pantry Needs:

**JELLY**



# Say Cheese!

FEELING CUTE?  
PLEASE SEE JOHNNA  
KOLAR SO SHE CAN  
TAKE YOUR PICTURE  
FOR OUR WESTLINK  
FAMILY BOARD.



# Midweek Manna

## Food for the Stomach and Soul

Many hands make light work.

- ▶ Here is how you can help:
  - ▶ Cook a meal
  - ▶ Donate towards a meal
  - ▶ Help clean up
- ▶ See Gary or Anna Jane if you are interested in cooking a meal.



**This week:**  
**Breakfast Casserole**

# Member Spotlight: Charlotte Duloher

Born and raised in Wichita, Charlotte has been a member here since 1966 when Karen Roehrman carted her kiddos to VBS and pulled her along for the ride. She was baptized on February 10<sup>th</sup>, 1972.

Charlotte is a woman of many passions: plants, reading, puzzles, sewing, talking, classical music, teaching our young children, and Cheezits. All this in addition to keeping Bob out of trouble!

Though Charlotte helped in she and Bob's auto shop for years, her favorite job will always be, Mom.

Fun fact: Charlotte was once a competitive swimmer! Ask her about it.



**Give Charlotte a hug, high five, or fist bump today.**



# Love in Action: Lord's Diner

## Next Opportunity is February 19th

- ▶ Please let Susan know if you can serve.
- ▶ Wear close-toed shoes and comfortable clothes.



*To love another person is to see the face of God. ~ Victor Hugo*

- ▶ When: The third Sunday of each month.
- ▶ Where: Central and Broadway.
- ▶ Needed: and any type of food handler's card, current or expired.
- ▶ See Susan with questions.

# 5<sup>th</sup> Sunday Special - TODAY

Join the all-church  
Love-in-Action  
planning session at  
class time, followed  
by a potluck.

