



GOOD

MORNING!

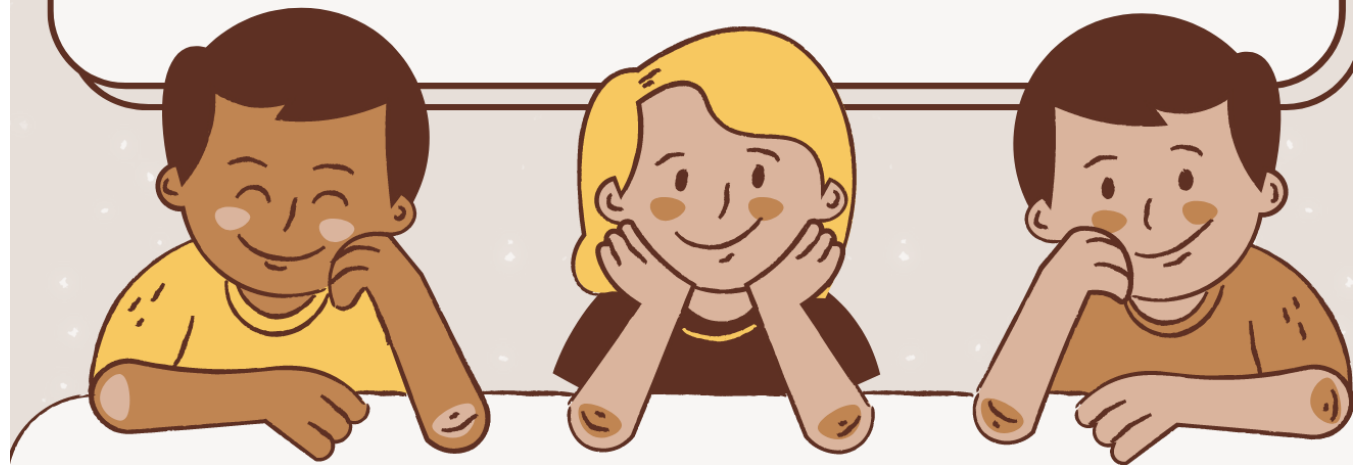
► **Elizabeth** will join Mrs. Charlotte and the **Pre-K** class.

► **Johnna** will join Mrs. Sandra in the **K-3rd** grade class.

► **Cindy** will join Mr. Eric in the **4th-8th** grade class.

CLASSROOM COMPANIONS

Deepening our intergenerational connections





Let's "Taco" 'Bout It

- ▶ All ladies are invited to a Taco Bar and planning session!
- ▶ Tuesday, January 24 at 6:30PM in the Fellowship Room
- ▶ Sign-ups for food will be on Facebook or see Teresa.
- ▶ Please plan to join and bring a friend!



Pantry Needs:

JELLY



Say Cheese!

FEELING CUTE?
PLEASE SEE JOHNNA
KOLAR SO SHE CAN
TAKE YOUR PICTURE
FOR OUR WESTLINK
FAMILY BOARD.

Midweek Manna

Food for the Stomach and Soul

Many hands make light work.

- ▶ Here is how you can help:
 - ▶ Cook a meal
 - ▶ Donate towards a meal
 - ▶ Help clean up
- ▶ See Gary or Anna Jane if you are interested in cooking a meal.



**This week:
Lasagna**

Member Spotlight: Charlotte Duloher

Born and raised in Wichita, Charlotte has been a member here since 1966 when Karen Roehrman carted her kiddos to VBS and pulled her along for the ride. She was baptized on February 10th, 1972.

Charlotte is a woman of many passions: plants, reading, puzzles, sewing, talking, classical music, teaching our young children, and Cheezits. All this in addition to keeping Bob out of trouble!

Though Charlotte helped in she and Bob's auto shop for years, her favorite job will always be, Mom.

Fun fact: Charlotte was once a competitive swimmer! Ask her about it.



Give Charlotte a hug, high five, or fist bump today.

Love in Action: Lord's Diner

Next Opportunity is February 19th

- ▶ Please let Susan know if you can serve.
- ▶ Wear close-toed shoes and comfortable clothes.



To love another person is to see the face of God. ~ Victor Hugo

- ▶ When: The third Sunday of each month.
- ▶ Where: Central and Broadway.
- ▶ Needed: and any type of food handler's card, current or expired.
- ▶ See Susan with questions.

5th Sunday Special - January 29th

An all-church
Love-in-Action planning
followed by an
all-church potluck.
Bring sides and desserts.
Fried Chicken
provided.

