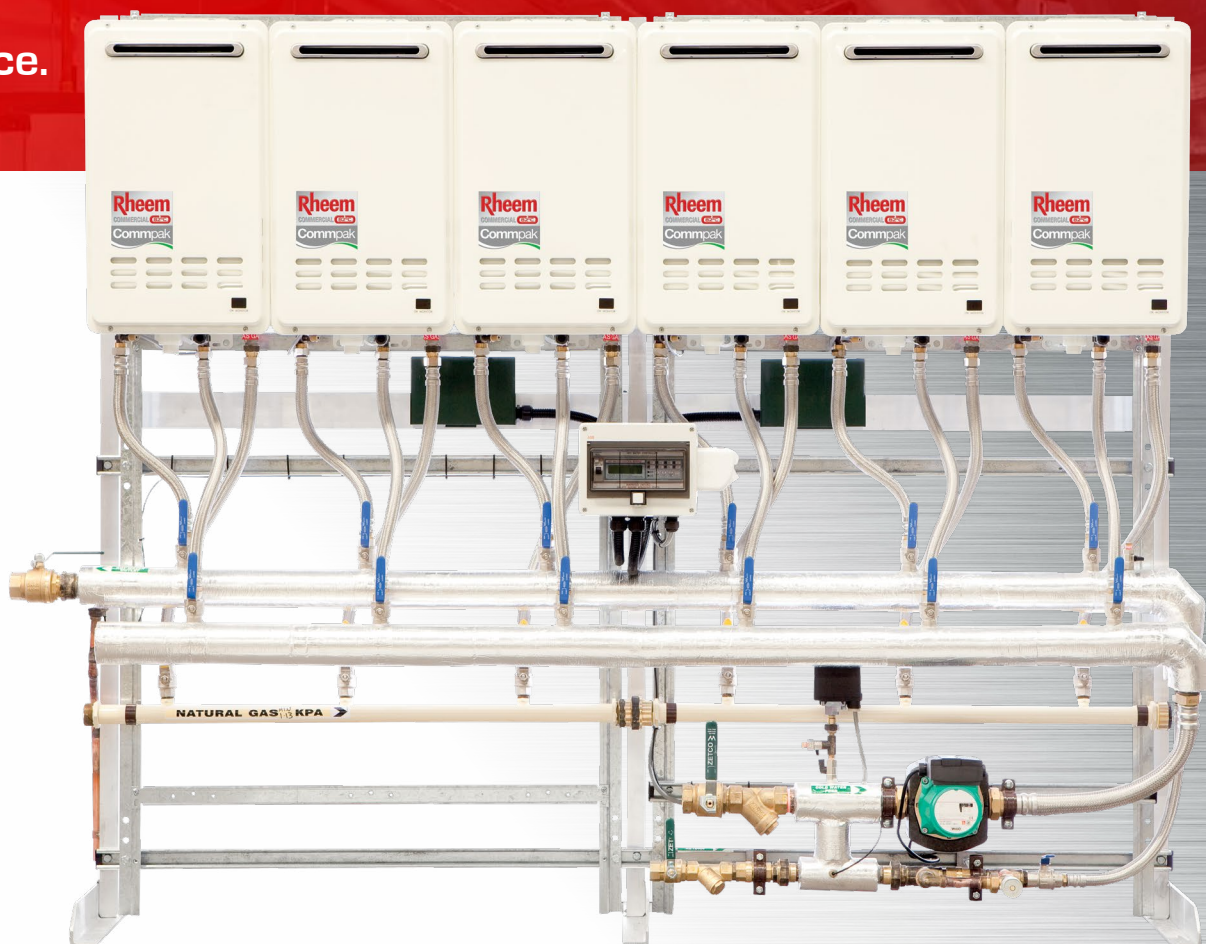


Tankless mains pressure performance.



Mains pressure hot water in a small footprint

Sophisticated electronics and pump technology equalises hot and cold water pressures, and a differential set point combined with the thermal mass in the system piping replicates storage.

Fast and efficient to install

Rheem factory-tests each order before supplying the entire CFWH system, including GPOs, pump and controller so there are no delays on site.

BMS capable

Central control operation with fault monitoring.

More key features

- Optional Duty/Standby pumps for additional redundancy
- Install inline up to 6 on one frame
- Loss of prime protection – turns off Commpak system if water pressure is lost

* 5 year warranty on heat exchanger with a thermostat setting not exceeding 75°C; 12 months heat exchanger warranty when used with a thermostat setting exceeding 75°C ; 12 months parts and labour.

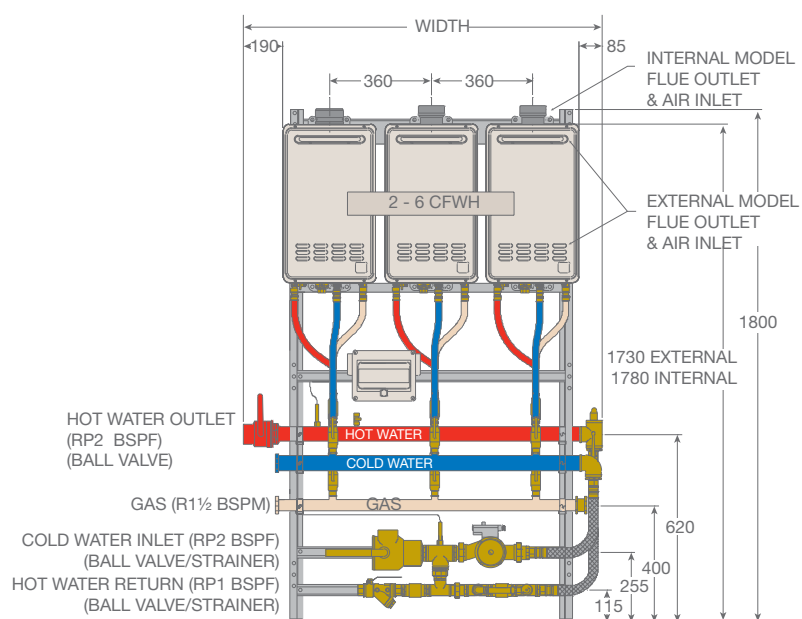


TECHNICAL DATA

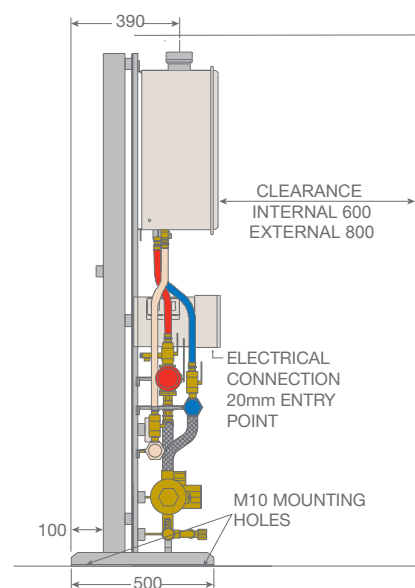
COMMPAK MODEL	INTERNAL EXTERNAL	CPI 02 CPE 02	CPI 03 CPE 03	CPI 04 CPE 04	CPI 05 CPE 05	CPI 06 CPE 06
Input	MJ/h	410	615	820	1,025	1,230
Recovery Rate at 50°C rise	L/hr	1,645	2,470	3,290	4,115	4,935
Peak Flow Rate at 50°C rise	L/min	27	41	54	68	81
Approx Weight	kg	120	150	220	245	270
Free Standing Frame (FSF)		standard	standard	standard	standard	standard
Electrical Supply (240V/50Hz)	Amps ¹⁰	3.62	4.62	5.62	6.62	7.92
Electrical Connection		Hard Wired	Hard Wired	Hard Wired	Hard Wired	Hard Wired
Dimensions						
Width	mm	1330	1330	1690	2050	2410
Depth (Free Standing Frame)	mm	500	500	500	500	500
Frost Protection		Yes	Yes	Yes	Yes	Yes
Accessories - Duty/Standby pump	part number	299659	299659	299659	299659	299659

¹⁰ Single pump. Add 1.62 Amps for Duty/Standby pump option.

Front view



Side view floor mounting



INSTALL A

