



Persona Homes

by Home Group

CHURCH FIELDS

NEW HARTLEY

ELLERTON

3 bedroom house

This lovely home has a great open-plan kitchen and dining space that will be the real heart of the home.

With three bedrooms, an en-suite to the main bedroom, a modern bathroom and handy downstairs cloakroom, there is enough room for the whole family.



Contact us:

T: 0800 030 8888

E: contactus@yourpersonahome.com

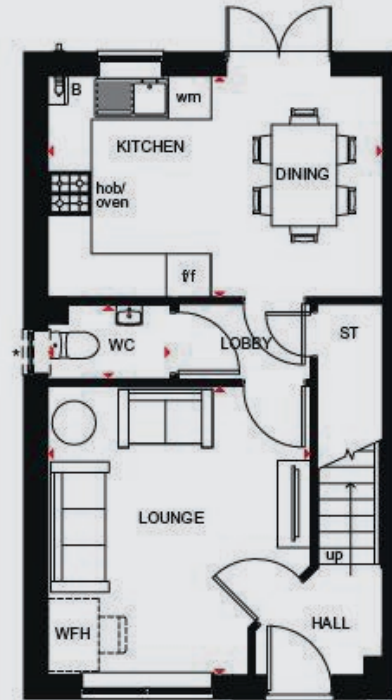
W: yourpersonahome.com

New Hartley, Northumberland, NE25 ORP

Ground floor

Kitchen/dining 4.6m x 3.05m

Living room 3.97m x 3.61m



First floor

Bedroom 1 3.69m x 3.61m

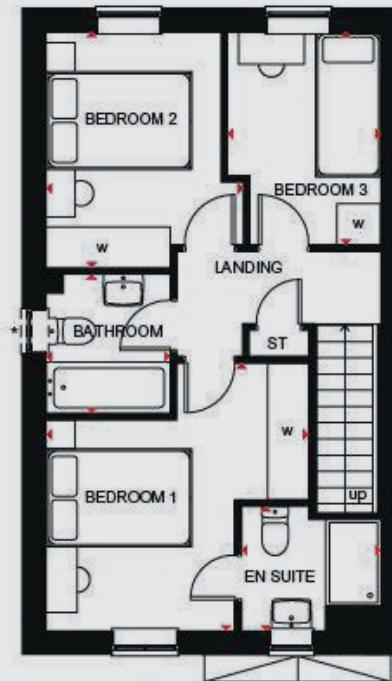
Bedroom 1 en suite 1.92m x 1.72m

Bedroom 2 3.25m x 2.71m

Bedroom 3 2.93m x 2.11m

Bathroom 1.92m x 1.7m

Total area 76.9 sqm



Any floor plans are a general outline of the layout of the property for guidance only. All measurements are approximate and may vary and any intending purchasers should not rely on them as statements of fact or representations of fact but must satisfy themselves by inspection or otherwise as to their accuracy. Dimensions shown are not intended to be relied upon for installation of appliances or items of furniture or otherwise. CGI's and images are for illustrative purposes only. Specifications are subject to change. Images are indicative only and may be of previous developments. *Journey times and distances taken from google.com/ maps and are correct before going to print. All times and distances listed are approximate and may vary depending on time of travel.



Persona Homes

by Home Group

CHURCH FIELDS

NEW HARTLEY

MAIDSTONE

3 bedroom house

A bright and airy home with lots of space to relax and unwind.

The separate living room is the perfect place to relax after a busy day. The open-plan kitchen and dining room comes with French doors and windows, making this a really bright and airy space. Add to this an en-suite to the main bedroom and a family bathroom, you're spoilt for space!



Contact us:

T: 0800 030 8888

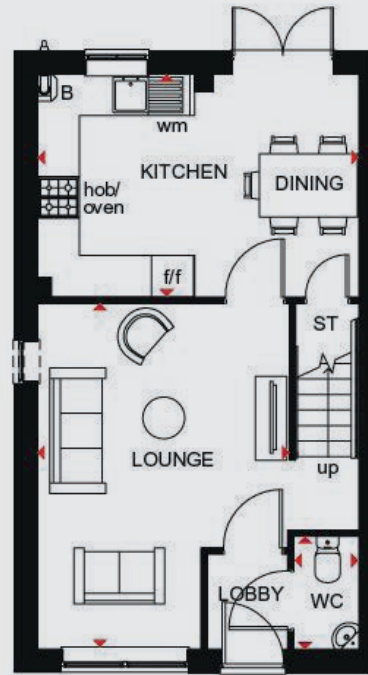
E: contactus@yourpersonahome.com

W: yourpersonahome.com

New Hartley, Northumberland, NE25 ORP

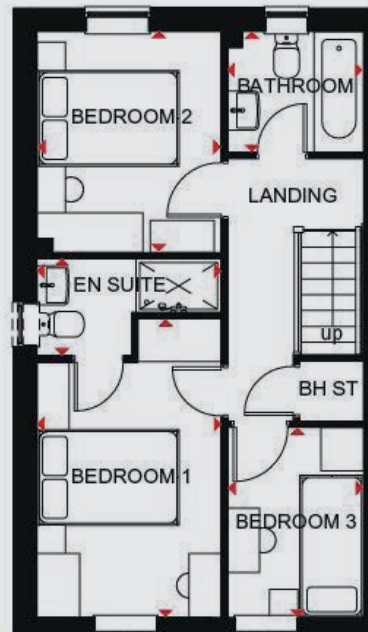
Ground floor

| | |
|----------------|--------------|
| Kitchen/dining | 4.6m x 3.2m |
| Living room | 4.96m x 4.6m |



First floor

| | |
|--------------------|---------------|
| Bedroom 1 | 4.2m x 2.59m |
| Bedroom 1 en suite | 2.59m x 1.37m |
| Bedroom 2 | 3.11m x 2.59m |
| Bedroom 3 | 2.68m x 1.92m |
| Bathroom | 1.92m x 1.7m |
| Total area | 76.9 sqm |



Any floor plans are a general outline of the layout of the property for guidance only. All measurements are approximate and may vary and any intending purchasers should not rely on them as statements of fact or representations of fact but must satisfy themselves by inspection or otherwise as to their accuracy. Dimensions shown are not intended to be relied upon for installation of appliances or items of furniture or otherwise. CGI's and images are for illustrative purposes only. Specifications are subject to change. Images are indicative only and may be of previous developments. *Journey times and distances taken from google.com/ maps and are correct before going to print. All times and distances listed are approximate and may vary depending on time of travel.