



Persona Homes

by Home Group

BOWLERS COURT

CHELMSFORD, ESSEX

1-bedroom apartments

*Spacious one-bedroom open-plan apartment with a balcony,
located in the heart of Chelmsford*



Contact us:

T: 0800 030 8888

E: contactus@yourpersonahome.com

W: yourpersonahome.com

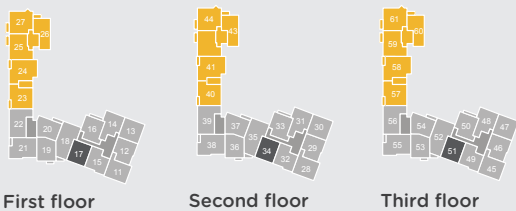
73B Springfield Road, Chelmsford Essex, CM2 6JG



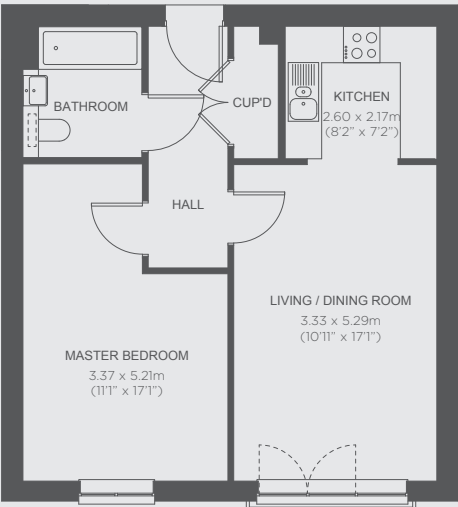
The Hanningfields – Plots 17, 34, 51

1-bedroom apartments

Kitchen	2.60m x 2.17m
Living/Dining Room	3.33m x 5.29m
Master bedroom	3.37m x 5.21m
Total Area	51.5m ²



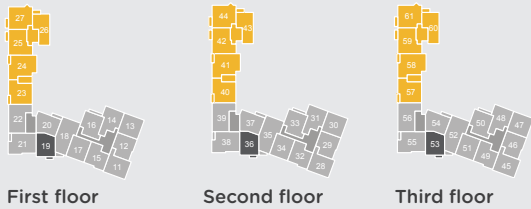
Plots available for affordable rent. Shared ownership.



The Widford – Plots 19, 36, 53

1-bedroom apartments

Kitchen/Living/Dining Room	6.57m x 3.46m
Master bedroom	2.80m x 4.44m
Total Area	50.5m ²



Plots available for affordable rent. Shared ownership.



Any floor plans are a general outline of the layout of the property for guidance only. All measurements are approximate and may vary and any intending purchasers should not rely on them as statements of fact or representations of fact but must satisfy themselves by inspection or otherwise as to their accuracy. Dimensions shown are not intended to be relied upon for installation of appliances or items of furniture or otherwise. CGI's and images are for illustrative purposes only. Specifications are subject to change. Images are indicative only and may be of previous developments.