



Persona Homes

by Home Group

RAILWAY BRIDGE VIEW

Brighouse

1 & 2 bedroom apartments

*Set in the town of Brighouse, Railway Bridge View is a stylish collection of 65 bright and spacious one and two bedroom apartments designed **for the over 55s**, with five available through shared ownership.*

Our apartments are part of the Railway Bridge Community Wellbeing scheme and are situated on the fifth floor, offering fantastic views to enjoy as well as a lovely winter garden. Each resident benefits from many additional facilities to enjoy including a restaurant, café, hair and beauty salon, communal areas to socialise, an assisted spa, guest suite and beautifully landscaped courtyards.



Contact us:

T: 0800 030 8888

E: contactus@yourpersonahome.com

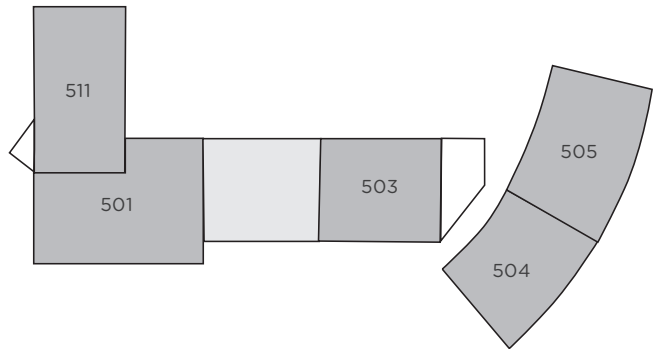
W: yourpersonahome.com

Bramston Street, Brighouse, Calderdale, HD6 3DH



Specification includes

- Rixonway kitchen – soft close doors and drawers, 40mm worktops 600mm splashbacks
- NEFF stainless steel oven
- Bosch ceramic hob
- Bosch stainless steel chimney hood
- Bosch integrated fridge-freezer
- Single glazed door and openable window to balcony
- Two panel wood grain white doors
- Twyford sanitaryware
- Full height tiling to three sides of the bath
- Thermostatic shower mixer
- Carpet to living/dining, bedrooms and hallways
- Tarkett vinyl flooring to kitchens and bathrooms

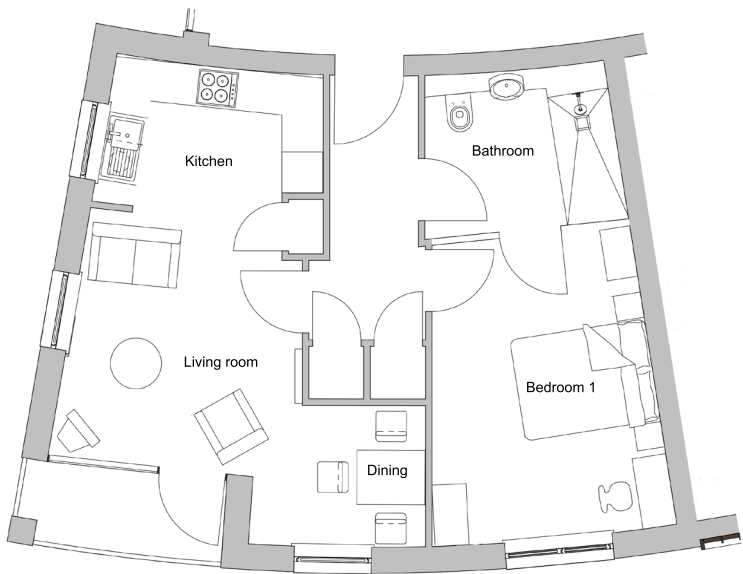


Plot 504

1 bedroom apartment

Kitchen	2.99m x 2.10m
Living/Dining Room	3.90m x 3.20m
Dining Room	1.84m x 2.35m
Bathroom	2.60m x 2.38m
Bedroom	4.26m x 2.94m
Total Area	53m ²

Apartment type A



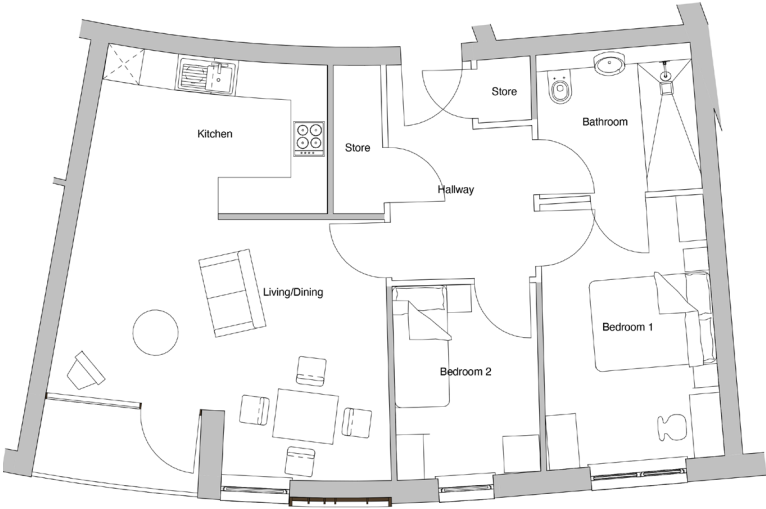
Any floor plans are a general outline of the layout of the property for guidance only. All measurements are approximate and may vary and any intending purchasers should not rely on them as statements of fact or representations of fact but must satisfy themselves by inspection or otherwise as to their accuracy. Dimensions shown are not intended to be relied upon for installation of appliances or items of furniture or otherwise. Cgi's and images are for illustrative purposes only.

Plot 505

2 bedroom apartment

Kitchen	3.63m x 2.45m
Living/Dining Room	4.16m x 4.60m
Bathroom	2.59 x 2.19m
Bedroom 1	4.47m x 2.61m
Bedroom 2	2.53m x 2.89m
Total Area	68m ²

Apartment type B

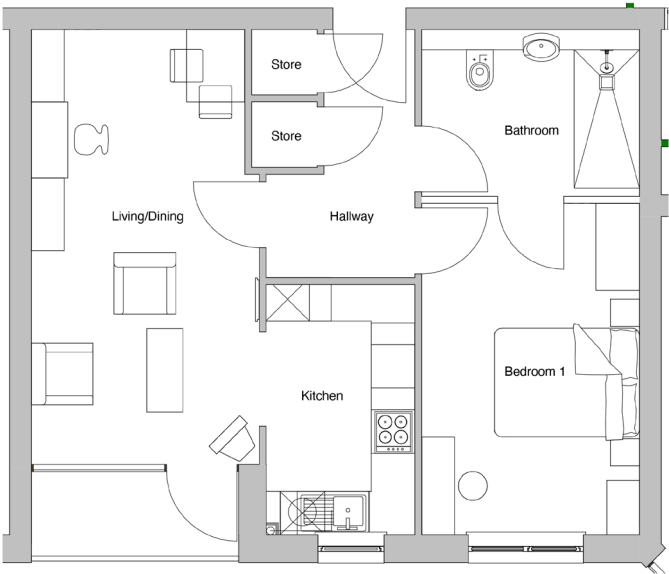


Plot 503

1 bedroom apartment

Kitchen	3.45m x 2.03m
Living/Dining Room	3.29m x 4.62m
Bathroom	2.17m x 2.90m
Bedroom 1	2.9m x 3.62m
Total Area	54m ²

Apartment type C



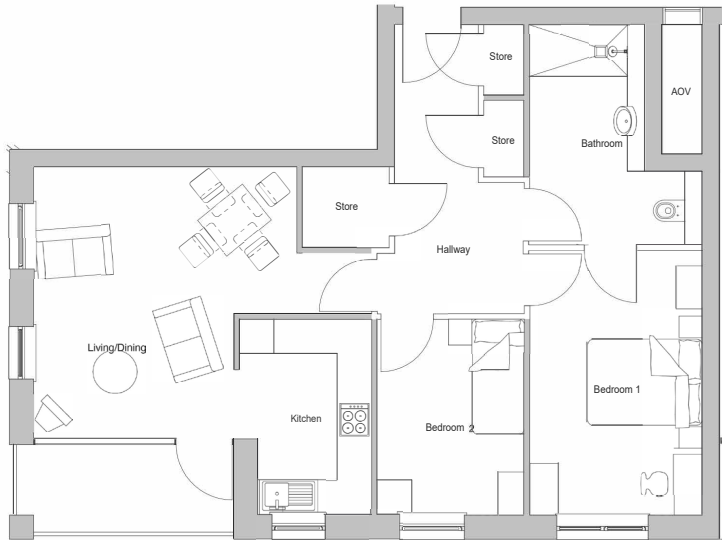
Any floor plans are a general outline of the layout of the property for guidance only. All measurements are approximate and may vary and any intending purchasers should not rely on them as statements of fact or representations of fact but must satisfy themselves by inspection or otherwise as to their accuracy. Dimensions shown are not intended to be relied upon for installation of appliances or items of furniture or otherwise. Cgi's and images are for illustrative purposes only.

Plot 501

2 bedroom apartment

Kitchen	2.20m x 3.38m
Living/Dining Room	4.73m x 4.73m
Bathroom	2.49m x 2.21m
Bedroom 1	4.83m x 2.92m
Bedroom 2	3.39m x 2.68m
Total Area	74m ²

Apartment type D

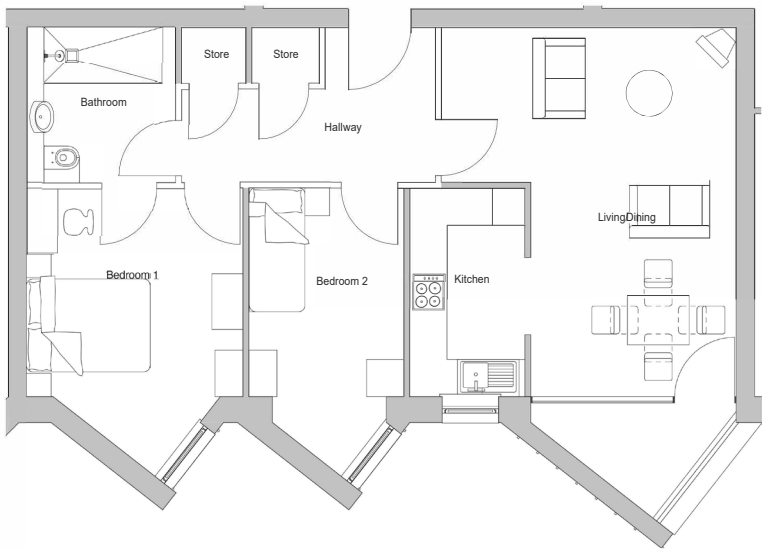


Plot 511

2 bedroom apartment

Kitchen	3.38m x 1.81m
Living/Dining Room	3.76m x 5.97m
Bathroom	2.37m x 2.47m
Bedroom 1	3.59m x 3.39m
Bedroom 2	2.60m x 3.39m
Total Area	70m ²

Apartment type E



Any floor plans are a general outline of the layout of the property for guidance only. All measurements are approximate and may vary and any intending purchasers should not rely on them as statements of fact or representations of fact but must satisfy themselves by inspection or otherwise as to their accuracy. Dimensions shown are not intended to be relied upon for installation of appliances or items of furniture or otherwise. Cgi's and images are for illustrative purposes only.