



Persona Homes

by Home Group

STIRLING FIELDS

NORTHSTOWE, CAMBRIDGE

HARVARD

3-bedroom home

Modern living with room to grow, this house has it all!



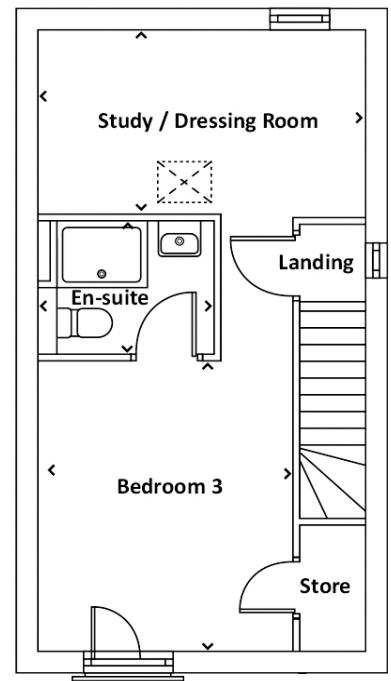
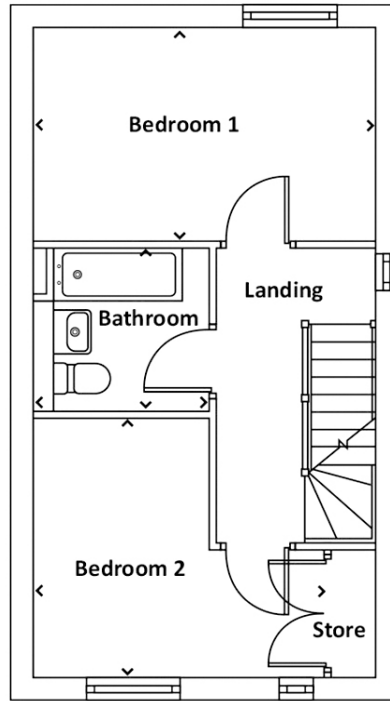
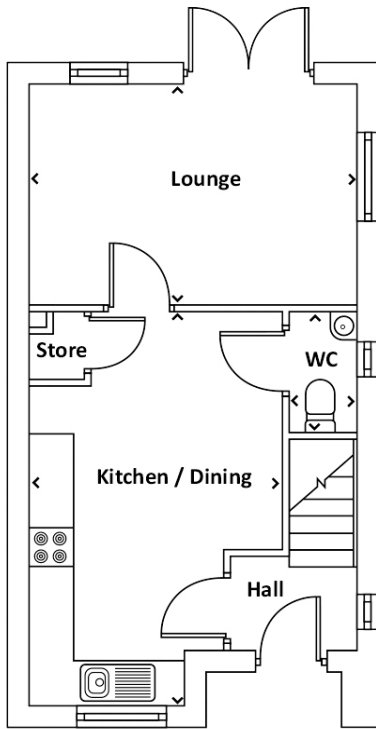
Contact us:

T: 0800 030 8888

E: contactus@yourpersonahome.com

W: yourpersonahome.com

Stirling Road, Northstowe, Cambridge, CB24 1DJ



Ground floor

Kitchen/dining room 4.54m x 3.50m

Living room 4.44m x 2.99m

First floor

Bedroom 2 3.78m x 3.40m

Bedroom 3 3.90m x 3.50m

Bathroom 2.24m x 2.17m

Second floor

Bedroom 1 4.44m x 2.79m

En-suite 2.39m x 1.80m

Study/Dressing room 4.44m x 2.54m

Total area 109.17m²



Any floor plans are a general outline of the layout of the property for guidance only. All measurements are approximate and may vary and any intending purchasers should not rely on them as statements of fact or representations of fact but must satisfy themselves by inspection or otherwise as to their accuracy. Dimensions shown are not intended to be relied upon for installation of appliances or items of furniture or otherwise. CGI's and images are for illustrative purposes only. Specifications are subject to change. Images are indicative only and may be of previous developments.*Journey times and distances taken from google.com/ maps and are correct before going to print. All times and distances listed are approximate and may vary depending on time of travel.



Persona Homes

by Home Group

STIRLING FIELDS

NORTHSTOWE, CAMBRIDGE

HAVILLAND

3-bedroom home

Modern living with room to grow, this house has it all!



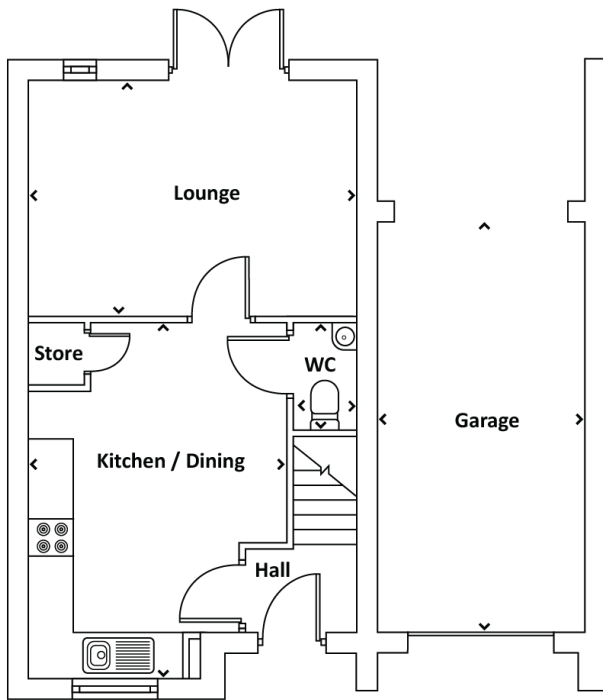
Contact us:

T: 0800 030 8888

E: contactus@yourpersonahome.com

W: yourpersonahome.com

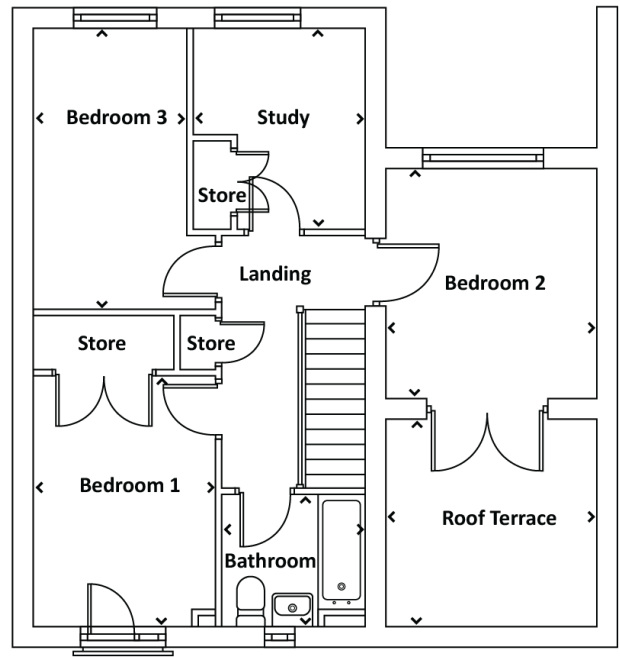
Stirling Road, Northstowe, Cambridge, CB24 1DJ



Ground floor

Kitchen/dining room 5.26m x 3.85m

Lounge 4.90m x 3.48m



First floor

Bedroom 1 3.73m x 2.67m

Bedroom 2 3.35m x 3.28m

Bedroom 3 4.16m x 2.67m

Study 3.01m x 2.59m

Bathroom 2.14m x 1.95m

Total area 96.53m²



Any floor plans are a general outline of the layout of the property for guidance only. All measurements are approximate and may vary and any intending purchasers should not rely on them as statements of fact or representations of fact but must satisfy themselves by inspection or otherwise as to their accuracy. Dimensions shown are not intended to be relied upon for installation of appliances or items of furniture or otherwise. CGI's and images are for illustrative purposes only. Specifications are subject to change. Images are indicative only and may be of previous developments.*Journey times and distances taken from google.com/ maps and are correct before going to print. All times and distances listed are approximate and may vary depending on time of travel.



Persona Homes

by Home Group

STIRLING FIELDS

NORTHSTOWE, CAMBRIDGE

LAMBETH

4-bedroom home

Space for everyone and everything, a home built for busy families.



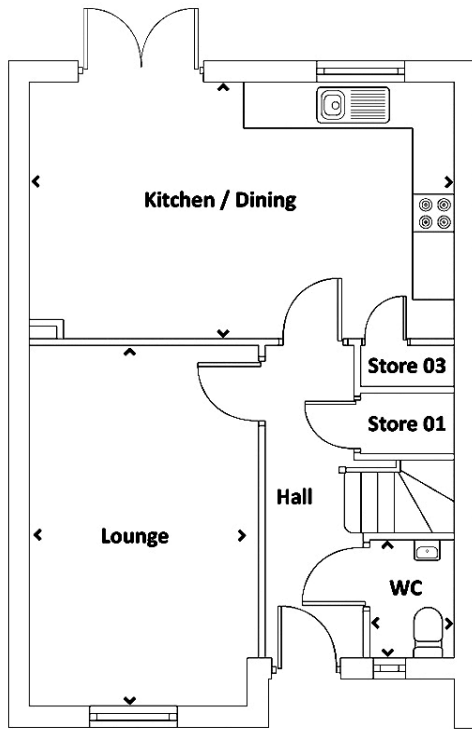
Contact us:

T: 0800 030 8888

E: contactus@yourpersonahome.com

W: yourpersonahome.com

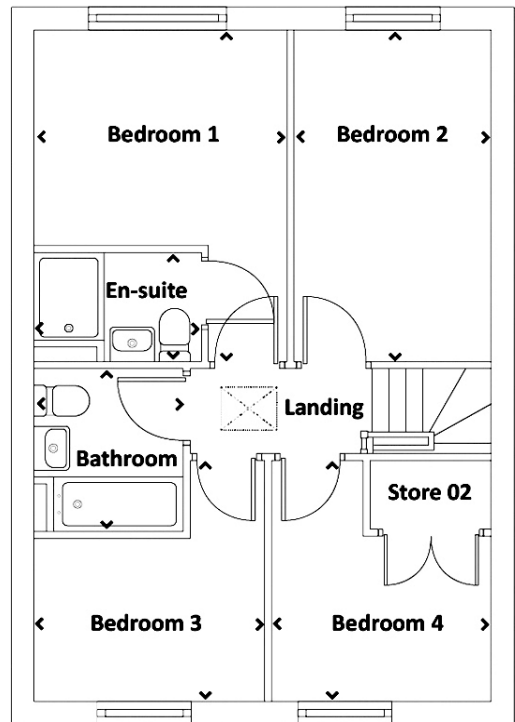
Stirling Road, Northstowe, Cambridge, CB24 1DJ



Ground floor

Kitchen/living room	6.10m x 3.65m
---------------------	---------------

Living room	5.09m x 3.25m
-------------	---------------



First floor

Bedroom 1	4.38m x 3.31m
-----------	---------------

En-suite	2.20m x 1.46m
----------	---------------

Bedroom 2	4.38m x 2.73m
-----------	---------------

Bedroom 3	3.17m x 3.05m
-----------	---------------

Bedroom 4	3.17m x 2.99m
-----------	---------------

Bathroom	2.15m x 1.96m
----------	---------------

Total area	106.1m²
-------------------	---------------------------



Any floor plans are a general outline of the layout of the property for guidance only. All measurements are approximate and may vary and any intending purchasers should not rely on them as statements of fact or representations of fact but must satisfy themselves by inspection or otherwise as to their accuracy. Dimensions shown are not intended to be relied upon for installation of appliances or items of furniture or otherwise. CGI's and images are for illustrative purposes only. Specifications are subject to change. Images are indicative only and may be of previous developments.*Journey times and distances taken from [google.com/maps](https://www.google.com/maps) and are correct before going to print. All times and distances listed are approximate and may vary depending on time of travel.



Persona Homes

by Home Group

STIRLING FIELDS

NORTHSTOWE, CAMBRIDGE

LANCASTER

3-bedroom home

With a smart design and plenty of space this home is ready to move right into.



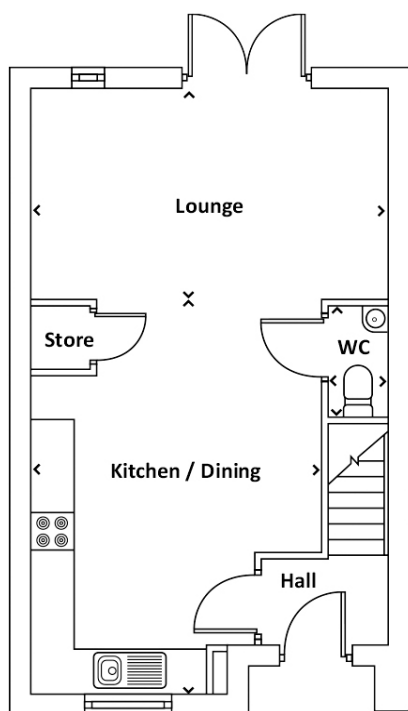
Contact us:

T: 0800 030 8888

E: contactus@yourpersonahome.com

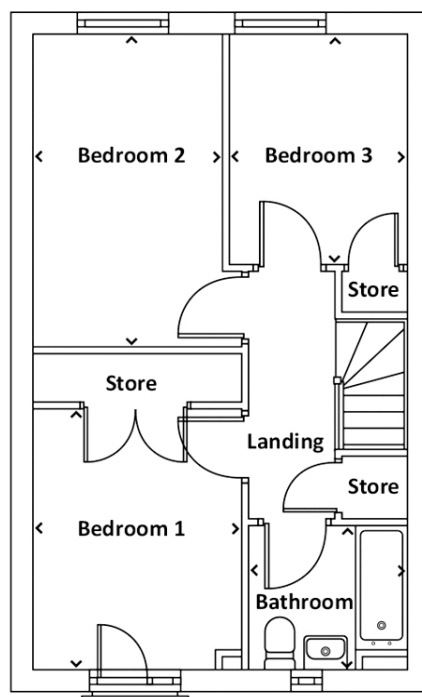
W: yourpersonahome.com

Stirling Road, Northstowe, Cambridge, CB24 1DJ



Ground floor

Kitchen/dining room	5.65m x 4.04m
Living room	5.09m x 2.99m



First floor

Bedroom 1	3.56m x 2.76m
Bedroom 2	4.25m x 2.51m
Bedroom 3	3.11m x 2.40m
Bathroom	2.14m x 1.95m
Total area	85.13m²



Any floor plans are a general outline of the layout of the property for guidance only. All measurements are approximate and may vary and any intending purchasers should not rely on them as statements of fact or representations of fact but must satisfy themselves by inspection or otherwise as to their accuracy. Dimensions shown are not intended to be relied upon for installation of appliances or items of furniture or otherwise. CGI's and images are for illustrative purposes only. Specifications are subject to change. Images are indicative only and may be of previous developments.*Journey times and distances taken from [google.com/ maps](https://www.google.com/maps) and are correct before going to print. All times and distances listed are approximate and may vary depending on time of travel.



Persona Homes

by Home Group

STIRLING FIELDS

NORTHSTOWE, CAMBRIDGE

STIRLING

3-bedroom home

Stylish living over three floors, this home has the wow factor.



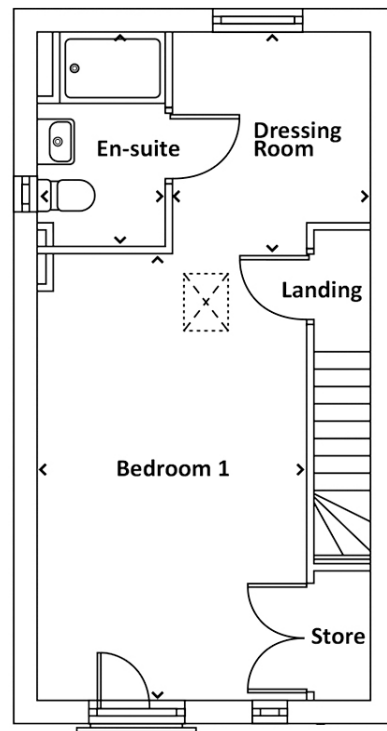
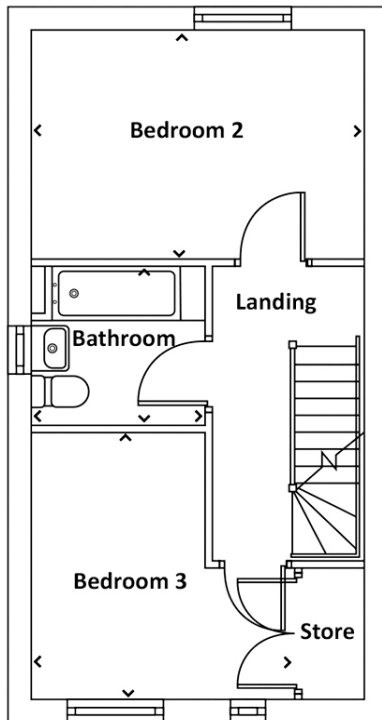
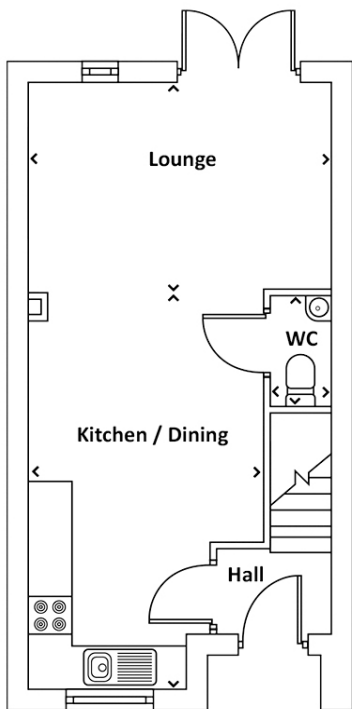
Contact us:

T: 0800 030 8888

E: contactus@yourpersonahome.com

W: yourpersonahome.com

Stirling Road, Northstowe, Cambridge, CB24 1DJ



Ground floor

Kitchen/dining room 5.86m x 3.50m

Living room 4.51m x 3.0m

First floor

Bedroom 2 4.55m x 3.06m

Bedroom 3 3.56m x 3.47m

Bathroom 2.44m x 2.15m

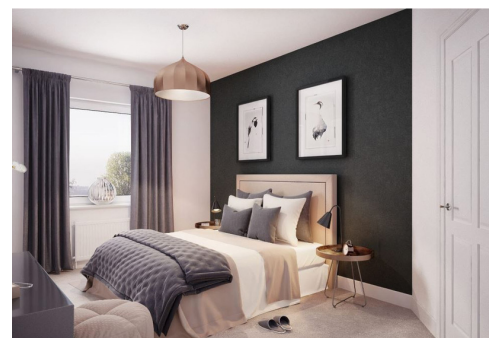
Second floor

Bedroom 1 4.02m x 3.53m

En-suite 2.36m x 1.84m

Study/Dressing room 4.56m x 2.83m

Total area 119.63m²



Any floor plans are a general outline of the layout of the property for guidance only. All measurements are approximate and may vary and any intending purchasers should not rely on them as statements of fact or representations of fact but must satisfy themselves by inspection or otherwise as to their accuracy. Dimensions shown are not intended to be relied upon for installation of appliances or items of furniture or otherwise. CGI's and images are for illustrative purposes only. Specifications are subject to change. Images are indicative only and may be of previous developments.*Journey times and distances taken from google.com/ maps and are correct before going to print. All times and distances listed are approximate and may vary depending on time of travel.