



Persona Homes

by Home Group

KINGS BARTON

WINCHESTER

Balder, Rei and Minos 1 and 2 bedroom apartments

A beautiful place to start afresh and call home

Located on the aspirational northern gateway, connecting you to the city and neighbouring communities, these stunning one and two-bedroom apartments offer you everything you would need and more right on your doorstep.



Contact us:

T: 0800 030 8888

E: contactus@yourpersonahome.com

W: yourpersonahome.com

Sutlers House, Canitz Way, Winchester, SO22 6HD



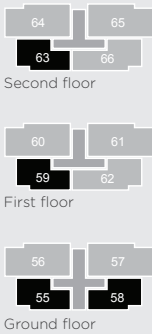
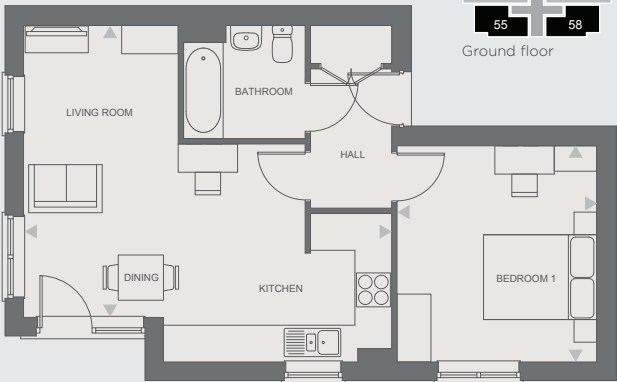
Type - Balder

Plots 55, 58, 59 and 63

1 bedroom apartments

Ground floor, first floor or second floor

Kitchen	2.66m x 3.71m
Living / dining room	5.21mx 2.77m
Hall	2.49m x 3.56m
Store at front door	0.71m x 1.47m
Bedroom 1	3.87m x 3.57m
Bathroom	2.04m x 2.18m
Total Area	51.47m ²



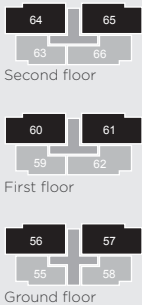
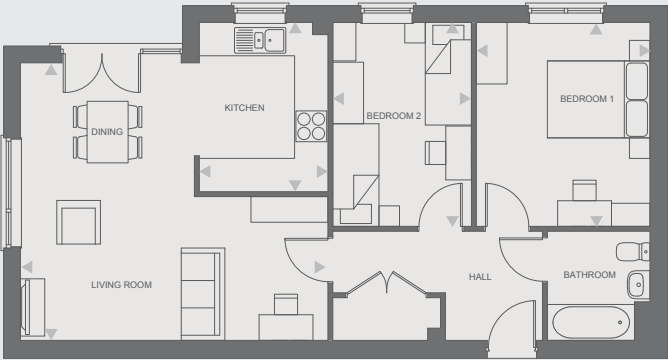
Type - Rei

Plots 56, 57, 60, 61, 64 and 65

2 bedroom apartments

Ground floor, first floor or second floor

Kitchen	3.34m x 2.53m
Living / dining room	5.46mx 6.03m
Hall	2.06m x 4.13m
Store at front door	1.00m x 2.13m
Bedroom 1	4.01m x 3.32m
Bedroom 2	4.01m x 2.63m
Bathroom	2.06m x 2.04m
Total Area	74.23m ²



Any floor plans are a general outline of the layout of the property for guidance only. All measurements are approximate and may vary and any intending purchasers should not rely on them as statements of fact or representations of fact but must satisfy themselves by inspection or otherwise as to their accuracy. Dimensions shown are not intended to be relied upon for installation of appliances or items of furniture or otherwise. CGI's and images are for illustrative purposes only. Specifications are subject to change. Images are indicative only and may be of previous developments.

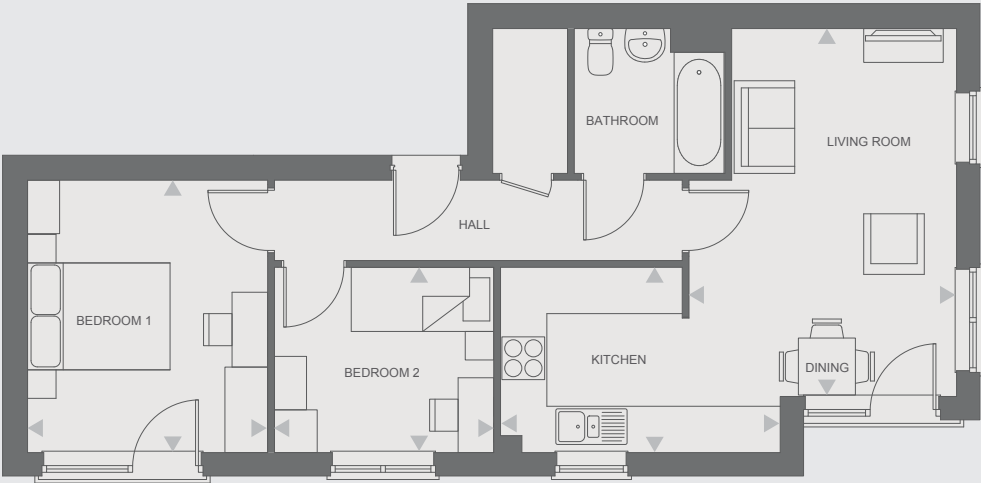
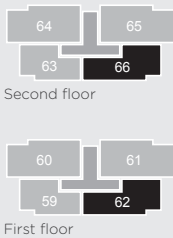
Type - Minos

Plots 62 and 66

2 bedroom apartments

First or second floor

Kitchen	2.82m x 2.78m
Living / dining room	5.86m x 3.16m
Hall	1.05m x 6.28m
Store at front door	0.97m x 2.08m
Bedroom 1	3.87m x 3.41m
Bedroom 2	2.64m x 3.53m
Bathroom	2.07m x 2.08m
Total Area	62.71m ²



Any floor plans are a general outline of the layout of the property for guidance only. All measurements are approximate and may vary and any intending purchasers should not rely on them as statements of fact or representations of fact but must satisfy themselves by inspection or otherwise as to their accuracy. Dimensions shown are not intended to be relied upon for installation of appliances or items of furniture or otherwise. CGI's and images are for illustrative purposes only. Specifications are subject to change. Images are indicative only and may be of previous developments.