



Persona Homes

by Home Group

HAZEL

KELVEDON HATCH

4-bedroom home

*A great family home with open plan living spaces.
The kitchen with breakfast bar is sure to be the heart of this home.*



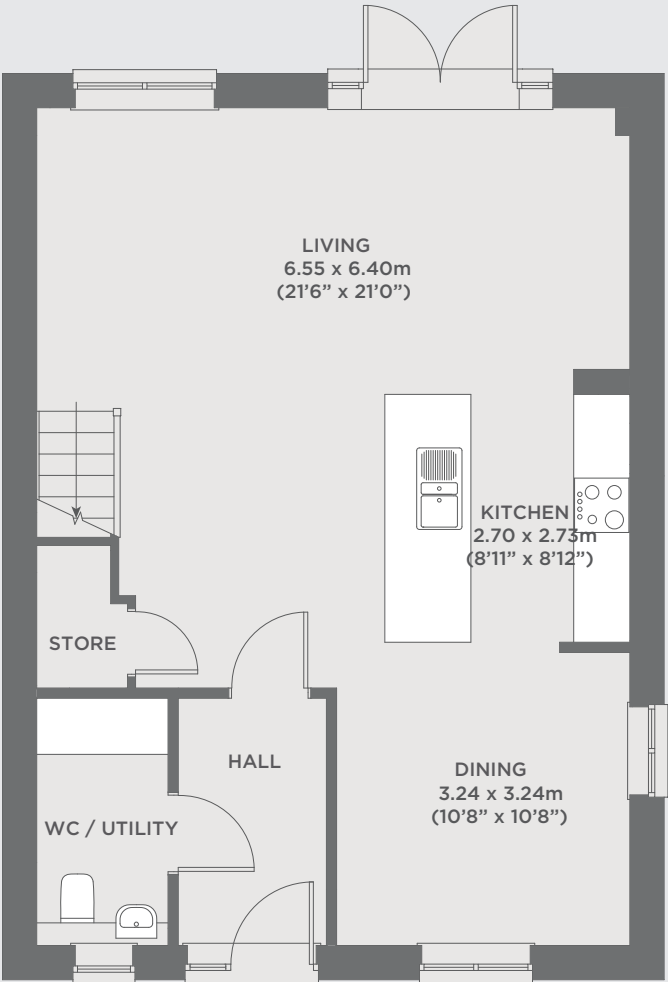
Contact us:

T: 0800 030 8888

E: contactus@yourpersonahome.com

W: yourpersonahome.com

Blackmore Road, Kelvedon Hatch, CM15 0FP



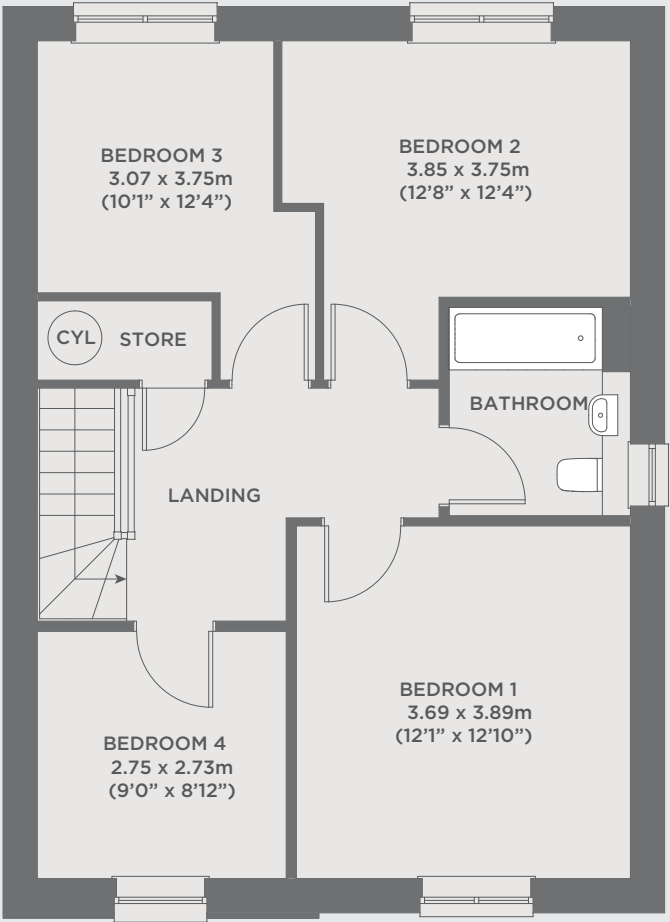
Ground floor

Kitchen	2.70m x 2.73m
Living	6.55m x 6.40m
Dining	3.24m x 3.24m

Ground floor

First floor

Bedroom 1	3.69m x 3.89m
Bedroom 2	3.85m x 3.75m
Bedroom 3	3.07m x 3.75m
Bedroom 4	2.75m x 2.73m
Total area	121.1 m ²



First floor

Any floor plans are a general outline of the layout of the property for guidance only. All measurements are approximate and may vary and any intending purchasers should not rely on them as statements of fact or representations of fact but must satisfy themselves by inspection or otherwise as to their accuracy. Dimensions shown are not intended to be relied upon for installation of appliances or items of furniture or otherwise. CGI's and images are for illustrative purposes only. Specifications are subject to change. Images are indicative only and may be of previous developments.*Journey times and distances taken from google.com/ maps and are correct before going to print. All times and distances listed are approximate and may vary depending on time of travel.