



Persona Homes

by Home Group

BOWLAND FOLD

LANCASHIRE

Milnthorpe

A fabulous three-bedroom semi detached family home that has more than you would expect.

Finished to an exceptionally high standard, this home comes with a separate lounge and great family kitchen with dining area. This space also includes a utility. Upstairs there are two doubles and one single bedroom along with the family bathroom.



Contact us:

T: 0800 030 8888

E: contactus@yourpersonahome.com

W: yourpersonahome.com

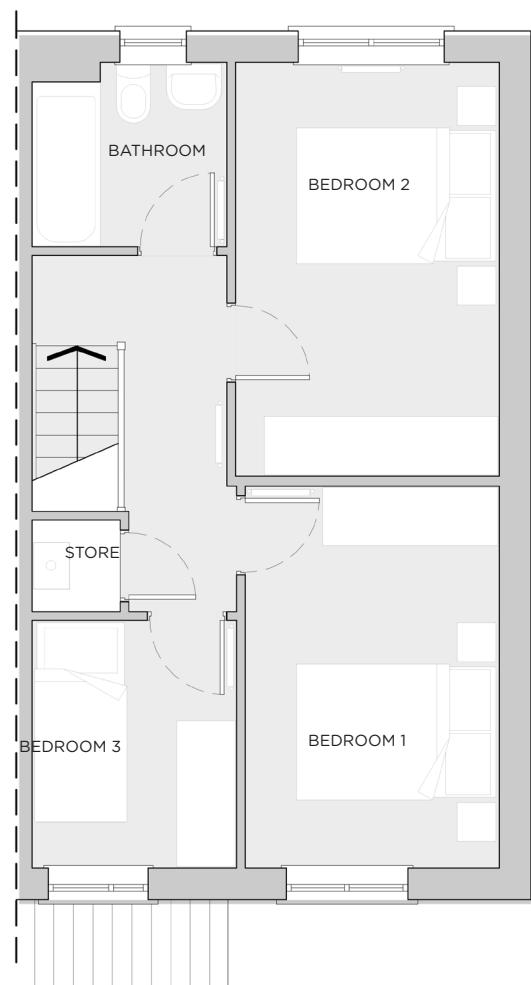
Lonsdale Rd, Halton, Lancaster LA2 6QA

3-bedroom house

Kitchen/dining	3.43m x 3.39m
Living room	4.80m x 3.75m
Cloakroom	1.55m x 1.20m
Utility	1.72m x 1.20m
Main bedroom	4.24m x 2.70m
Bedroom 2	3.94m x 2.60m
Bedroom 3	2.54m x 2.07m
Bathroom	1.97m x 1.89m
Total Area	79m²



Ground floor



First floor



Any floor plans are a general outline of the layout of the property for guidance only. All measurements are approximate and may vary and any intending purchasers should not rely on them as statements of fact or representations of fact but must satisfy themselves by inspection or otherwise as to their accuracy. Dimensions shown are not intended to be relied upon for installation of appliances or items of furniture or otherwise. Cgi's and images are for illustrative purposes only.