



# Persona Homes

by Home Group

## ST GEORGE'S PARK

HORNCHURCH

### 2 bedroom apartments

*A collection of two bedroom apartments available through Shared Ownership, within convenient travelling distance of the M25, A12 and A13 for commuting to London and Docklands.*

Situated in the heart of Hornchurch, with only a 2 minute walk to Hornchurch Underground Station and all your local amenities, and views of the Hornchurch Country Park from selected plots, these contemporary apartments cater for a wide range of lifestyles. Whether you are a commuting professional, a growing family and looking to take your first step on the property ladder, you'll be spoilt for choice.



#### Contact us:

T: 0800 030 8888

E: [contactus@yourpersonahome.com](mailto:contactus@yourpersonahome.com)

W: [yourpersonahome.com](http://yourpersonahome.com)

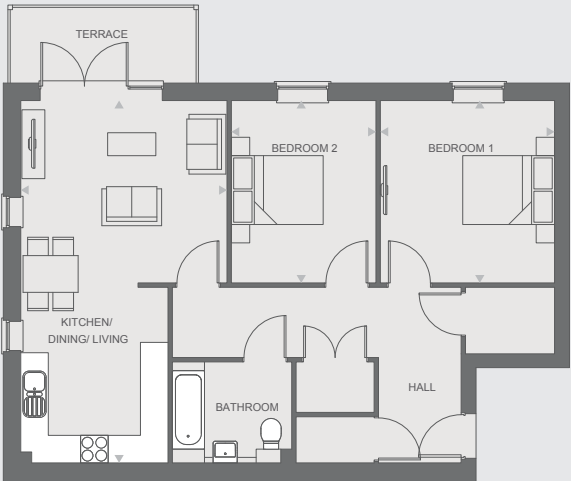
Suttons Lane, Havering RM12 6RS



# Plot 11

2 bedroom apartment    BLOCK A

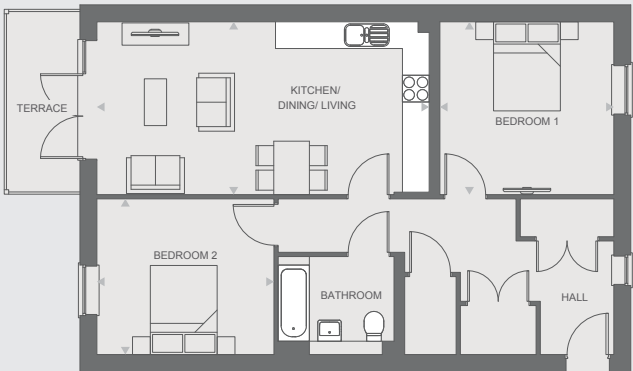
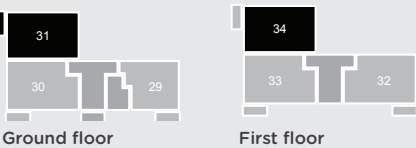
Bedroom 1	3.83m x 4.01m
Bedroom 2	3.17m x 4.01m
Living room	4.53m x 4.01m
Kitchen/Dining room	3.24m x 3.86m
Bathroom	2.62m x 2.23m
Total Area	87.70m <sup>2</sup>



# Plots 31 & 34

2 bedroom apartment    BLOCK B

Bedroom 1	3.95m x 3.91m
Bedroom 2	4.01m x 3.53m
Living/Kitchen/Dining room	7.51m x 3.91m
Bathroom	2.63m x 2.23m
Total Area	88.40m <sup>2</sup>

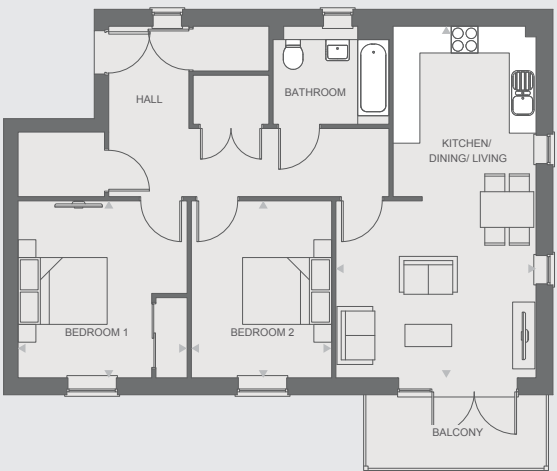
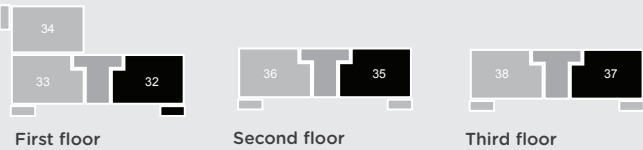


Any floor plans are a general outline of the layout of the property for guidance only. All measurements are approximate and may vary and any intending purchasers should not rely on them as statements of fact or representations of fact but must satisfy themselves by inspection or otherwise as to their accuracy. Dimensions shown are not intended to be relied upon for installation of appliances or items of furniture or otherwise. Cgi's and images are for illustrative purposes only.

# Plots 32, 35 & 37

2 bedroom apartment BLOCK B

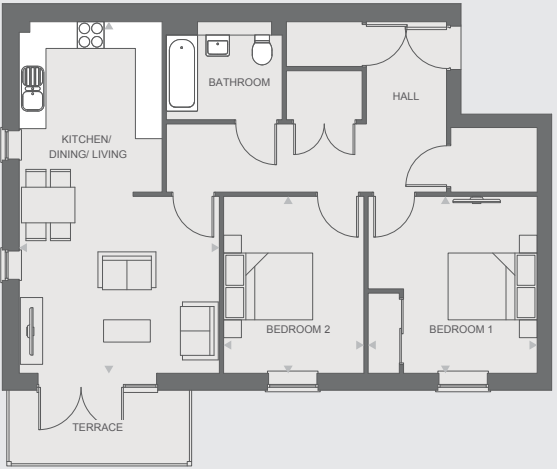
Bedroom 1	3.83m x 4.01m
Bedroom 2	3.17m x 4.01m
Living room	4.53m x 4.01m
Kitchen/Dining room	3.24m x 3.86m
Bathroom	2.62m x 2.23m
Total Area	87.70m <sup>2</sup>



# Plots 36 & 38

2 bedroom apartment BLOCK B

Bedroom 1	3.83m x 4.01m
Bedroom 2	3.17m x 4.01m
Living room	4.53m x 4.01m
Kitchen/Dining room	3.24m x 3.86m
Bathroom	2.62m x 2.23m
Total Area	87.70m <sup>2</sup>



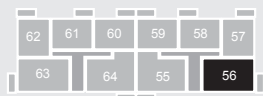
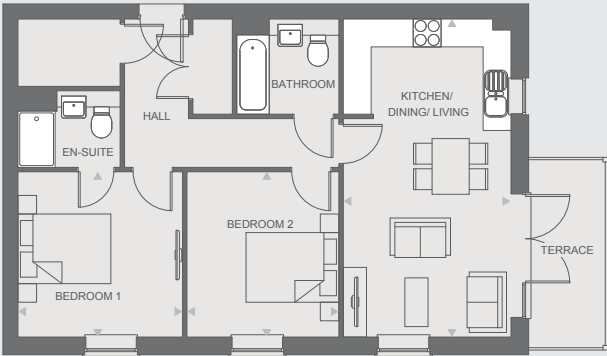
Any floor plans are a general outline of the layout of the property for guidance only. All measurements are approximate and may vary and any intending purchasers should not rely on them as statements of fact or representations of fact but must satisfy themselves by inspection or otherwise as to their accuracy. Dimensions shown are not intended to be relied upon for installation of appliances or items of furniture or otherwise. Cgi's and images are for illustrative purposes only.



# Plot 56

2 bedroom apartment    BLOCK C

Bedroom 1	3.58m x 3.59m
Bedroom 2	3.29m x 3.59m
Living/Kitchen/Dining room	3.65m x 6.73m
En-suite	2.23m x 1.67m
Bathroom	2.22m x 2.08m
Total Area	72.88m <sup>2</sup>



First floor

## Specification includes

- Contemporary Manhattan kitchen with dust grey coloured wall units and white laminate worktops
- Stainless steel Zanussi integrated single oven with four ring electric hob and chimney extractor hood
- Zanussi integrated fridge-freezer and washing machine
- Free-standing Candy washer/dryer
- Luxury Roca “Laura” range white bathroom suite with contemporary chrome plated brassware
- Ceramic white wall and floor tiles in bathrooms
- Creo virgina oak brown laminate flooring in living room and hallway
- Homerton grey carpet to bedrooms
- Wall mounted video/telephone door entry handset in hallway
- One allocated parking space per apartment



Any floor plans are a general outline of the layout of the property for guidance only. All measurements are approximate and may vary and any intending purchasers should not rely on them as statements of fact or representations of fact but must satisfy themselves by inspection or otherwise as to their accuracy. Dimensions shown are not intended to be relied upon for installation of appliances or items of furniture or otherwise. Cgi's and images are for illustrative purposes only.