



Persona Homes

by Home Group

BURGHAM PARK

MORPETH

The Buttercup

*Looking to step onto the property ladder?
The Buttercup could be the home for you!*

The open-plan kitchen and dining room opens out onto the garden, making it a really bright and airy space. The separate living room is the perfect place to relax and unwind after a busy day.

Add to this three bedrooms and a family bathroom, there's enough space for everyone!



Contact us:

T: 0800 030 8888

E: contactus@yourpersonahome.com

W: yourpersonahome.com

Burgham Park, Morpeth, NE65 9QP



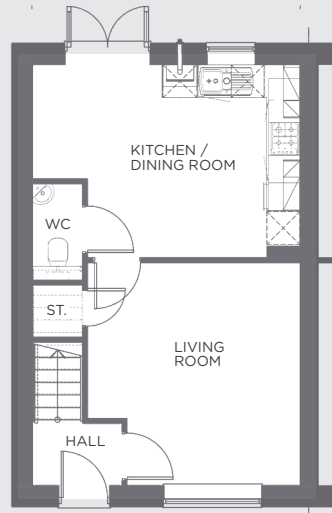
Plots 11, 12, 39, 40, 41, 42, 43, 44, 45, 46, 47 & 48

3 bedroom houses

Ground floor

Kitchen/dining room 4.85m x 3.52m

Living room 3.86m x 4.06m



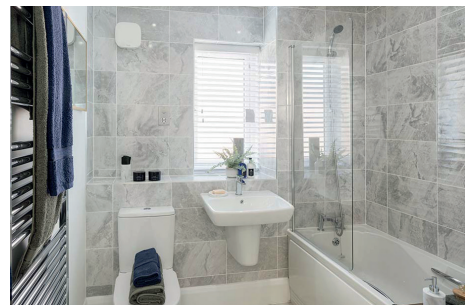
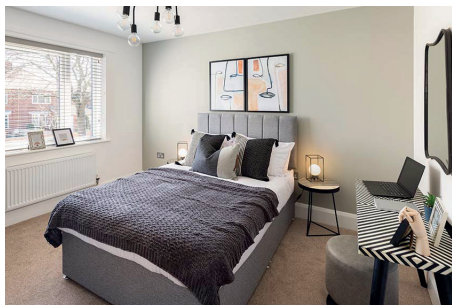
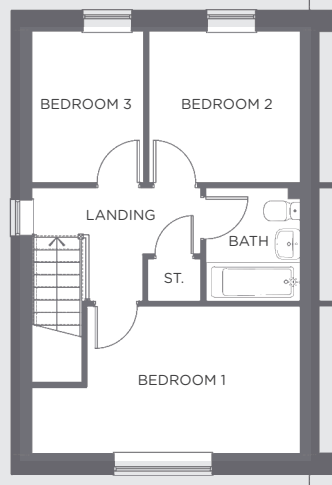
First floor

Bedroom 1 4.85m x 2.68m

Bedroom 2 2.73m x 2.75m

Bedroom 3 2.03m x 2.75m

Bathroom 1.71m x 2.06m



Any floor plans are a general outline of the layout of the property for guidance only. All measurements are approximate and may vary and any intending purchasers should not rely on them as statements of fact or representations of fact but must satisfy themselves by inspection or otherwise as to their accuracy. Dimensions shown are not intended to be relied upon for installation of appliances or items of furniture or otherwise. Cgi's and images are for illustrative purposes only.