



Persona Homes

by Home Group

LANGUARD VIEW

DOVERCOURT

Bromley

(Ground floor - Plots 6, 49 and 51)

(First floor - Plots 7, 50 and 52)

1-bedroom maisonette

A smart choice for stepping onto the property ladder.

This cosy maisonette has been thoughtfully designed and is ready to move right into. You just need to bring your belongings! The open plan living area with dual aspect windows includes a modern kitchen with integrated appliances and is a great space for relaxing or entertaining. The bedroom is large enough to incorporate a working from home space and there is also a handy storage cupboard.



Contact us:

T: 0800 030 8888

E: contactus@yourpersonahome.com

W: yourpersonahome.com

Low Road, Dovercourt, Essex, CO12 3TQ.

Plots 6, 49, and 51

Ground floor

Kitchen/living/dining 4.69m x 3.70m

Main bedroom 3.67m x 3.89m

Bathroom 2.18m x 2.18m

Total floor area 50.14m²

Plots 7, 50 and 52

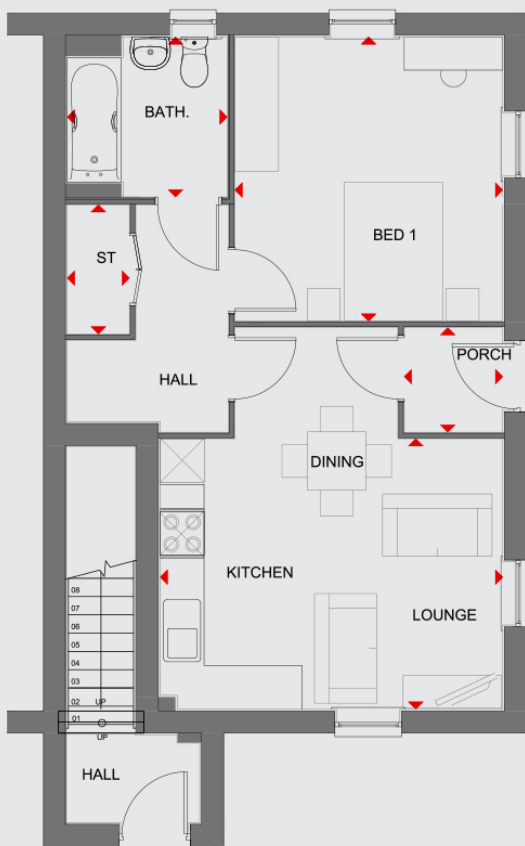
First floor

Kitchen/living/dining 4.92m x 4.95m

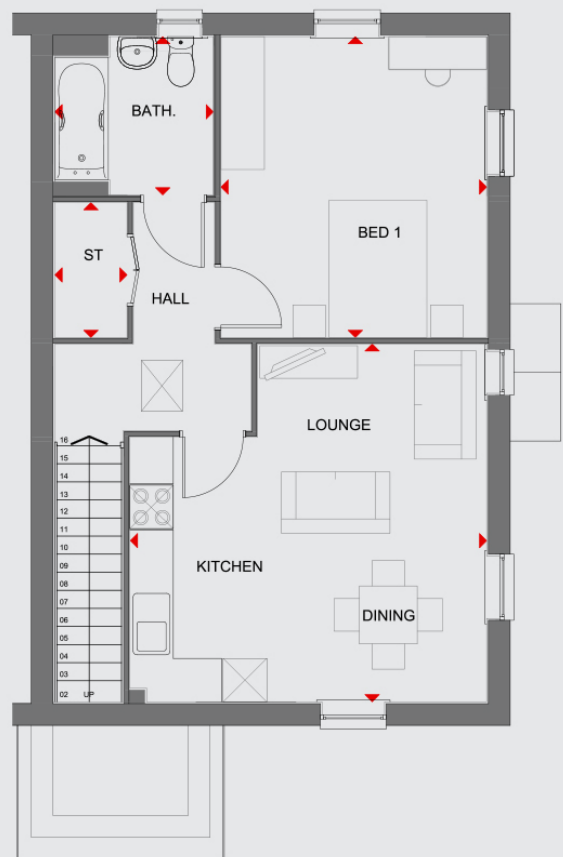
Main bedroom 3.67m x 4.16m

Bathroom 2.19m x 2.19m

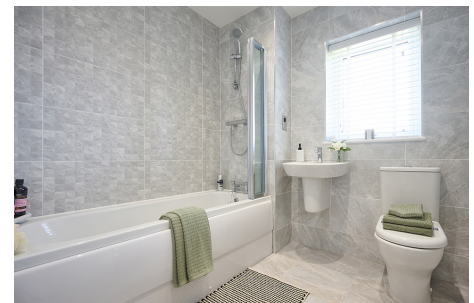
Total floor area 55.64m²



Ground floor



First floor



Any floor plans are a general outline of the layout of the property for guidance only. All measurements are approximate and may vary and any intending purchasers should not rely on them as statements of fact or representations of fact but must satisfy themselves by inspection or otherwise as to their accuracy. Dimensions shown are not intended to be relied upon for installation of appliances or items of furniture or otherwise. CGI's and images are for illustrative purposes only. Specifications are subject to change. Images are indicative only and may be of previous developments.*Journey times and distances taken from [google.com/maps](https://www.google.com/maps) and are correct before going to print. All times and distances listed are approximate and may vary depending on time of travel.